

CERTIFIED LAND CORNER RESTORATION

Index No. **R23**

State of Wisconsin }  
County of Forest } ss.

History of original corner establishment:  
Original survey by James L. Nowlin 2 June - 12 June, 1865

Fir 8 S63E 15 lks.  
Cedar 12 N37W 10 lks.

I Thomas R. Arnott, do hereby certify that on the 19<sup>th</sup> day of October, 1977, I found evidence of the 1/4 corner of sections 24 & 25 Township 36, North, Range 13 E, Fourth Principal Meridian, as described hereon; and that from this evidence I established a new monument and accessories as described hereon to perpetuate the original location of this corner.

Description of corner evidence found:

2" iron pipe 5' long with brass cap set by C.E. Walker in 1938.

Resident witnesses:

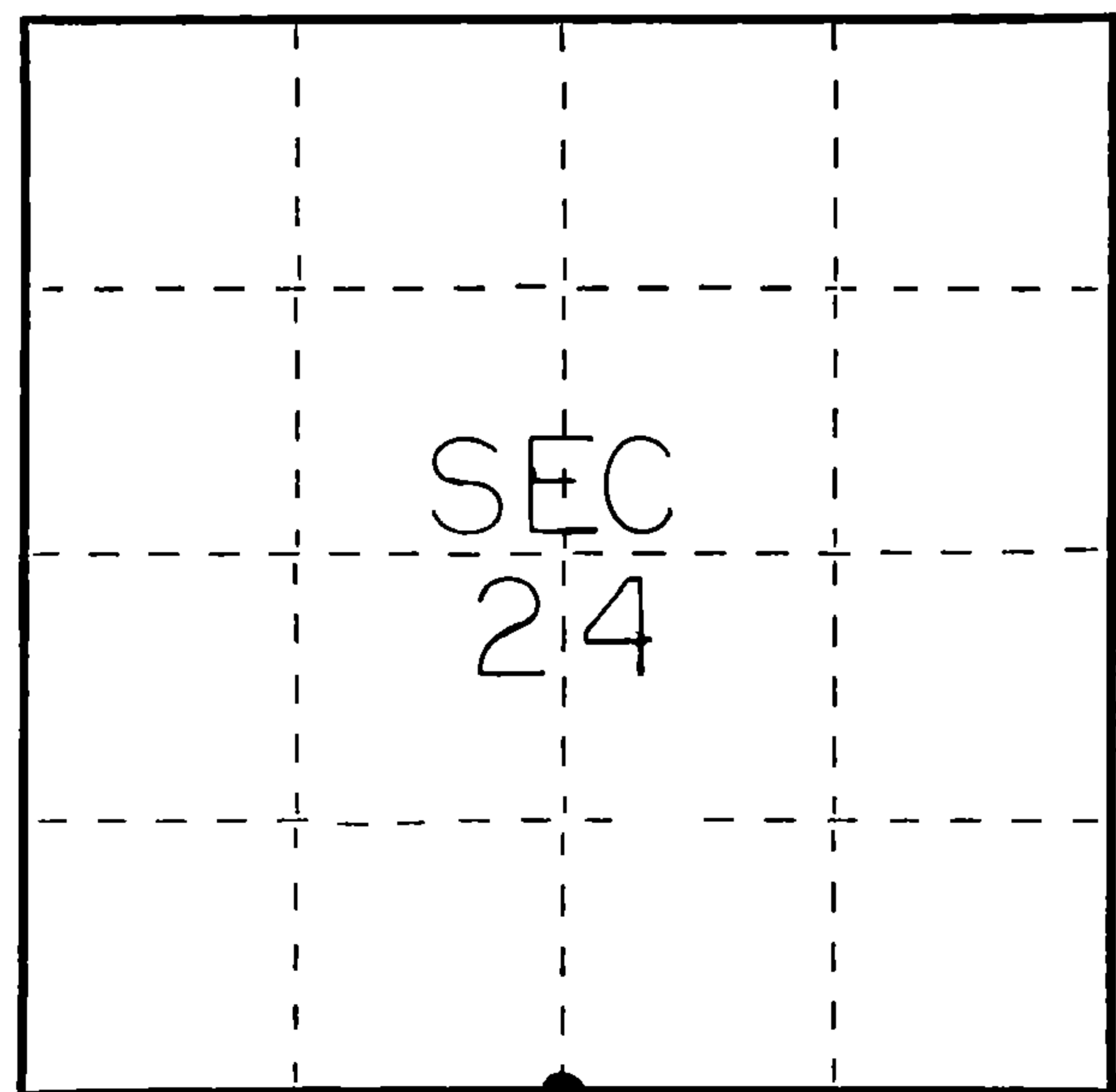
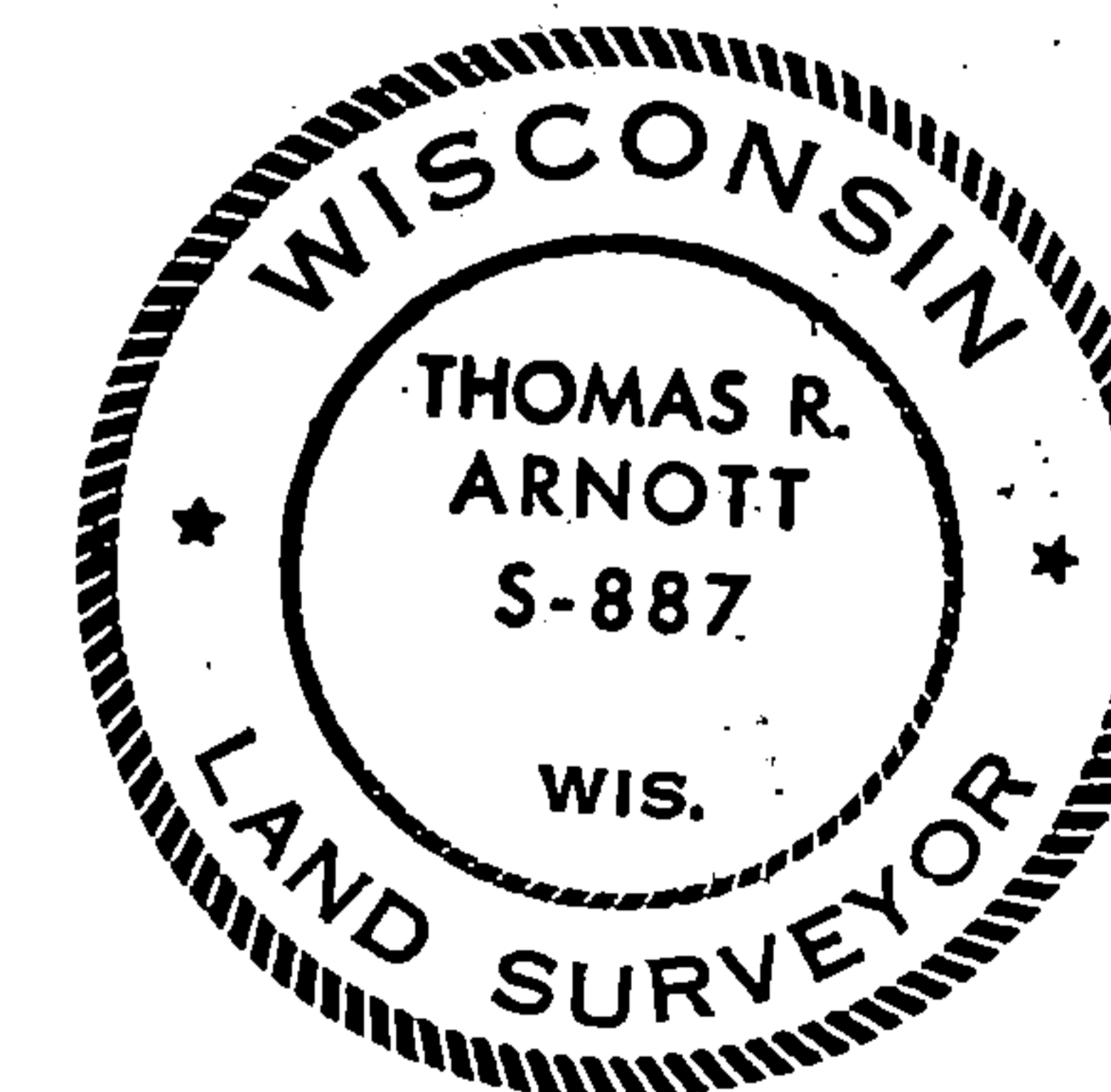
.....  
.....  
.....

Description of monument and accessories I established to perpetuate the original location of this corner.

Left monument set by Walker.

Ties:

Cedar 10 N46E 16.79 feet  
Cedar 8 S47E 9.13 feet



○ = Corner monument restored.

Dated at Grandon, Wis., this 3<sup>rd</sup> day of November, 1977.

Signature Thomas R. Arnott Title Surveyor Registration No. S-887  
(County Surveyor, Registered Land Surveyor, or other duly authorized official)

Office of Register of Deeds, County of Forest, I hereby certify that the within instrument was filed in this office for record on the 3<sup>rd</sup> day of November, 1977 at 11 o'clock P. M.

Eugene J. Stetson Doc. No. 112707  
(Register of Deeds)

By..... Deputy

FORM 985 N. C. MILLER CO., MILWAUKEE

430613240020

Document Number  
189307

REGISTER'S OFFICE  
Forest County, Wis.  
Received for record this 18<sup>th</sup> day  
of November A.D., 2005 at  
3:55 o'clock P.M. and recorded  
in Vol. Corner Restoration  
page B-23  
Kay Swanson, Deputy  
Register of Deeds

### U.S. PUBLIC LAND SURVEY MONUMENT RECORD

(AS REQUIRED BY S. A-E 5.02, WI ADM. CODE)

HISTORY OF ORIGINAL CORNER ESTABLISHMENT AND SUBSEQUENT RESTORATIONS AND DESCRIPTION OF ANY RECORD, MONUMENT, OCCUPATIONAL, TESTIMONIAL, OR OTHER EVIDENCE CONSIDERED:

1865 - JAMES L. NOWLIN, SURVEYOR, SET POST

SET THE FOLLOWING WITNESSES:  
FIR 8" S63°E 15 LINKS  
CEDAR 12" N37°W 10 LINKS

1938 - C.E. WALKER, SET 2" IRON PIPE 5'ONG WITH BRASS CAP.

1977 - THOMAS R. ARNOTT, SURVEYOR, S-887, FOUND MONUMENT SET BY C.E. WALKER.

SET THE FOLLOWING WITNESSES:  
CEDAR 10" N46°E 16.79 FEET  
CEDAR 8" S47°E 9.13 FEET

CORNER WAS: (CHECK ALL THAT APPLY)

- RESTORED THROUGH ACCEPTANCE OF AN OBLITERATED LOCATION
- RESTORED THROUGH ACCEPTANCE OF A FOUND PERPETUATED LOCATION
- CONSIDERED A LOST CORNER AND REESTABLISHED THROUGH LOST CORNER PROPORTIONATE METHODS (INCLUDING A PLAN VIEW DRAWING SHOWING DISTANCES AND DIRECTIONS TO OTHER PUBLIC LAND SURVEY CORNERS USED FOR PROPORTIONING AND DETERMINING THE CORNER LOCATION)
- RESTORED OR REESTABLISHED IN A LOCATION THAT DIFFERS FROM A PREVIOUS RESTORATION OF REESTABLISHMENT (INCLUDE A PLAN VIEW DRAWING AND INDICATE WHAT WAS SET AND/OR FOUND)

DESCRIBE THE MONUMENT AND ACCESSORIES USED TO PERPETUATE THE LOCATION OF THIS CORNER. (INCLUDE A PLAN VIEW DRAWING AND INDICATE WHAT WAS SET AND/OR FOUND)

FOUND 2" x 30" IRON PIPE w/BRASS CAP.

FOUND THE FOLLOWING WITNESSES:

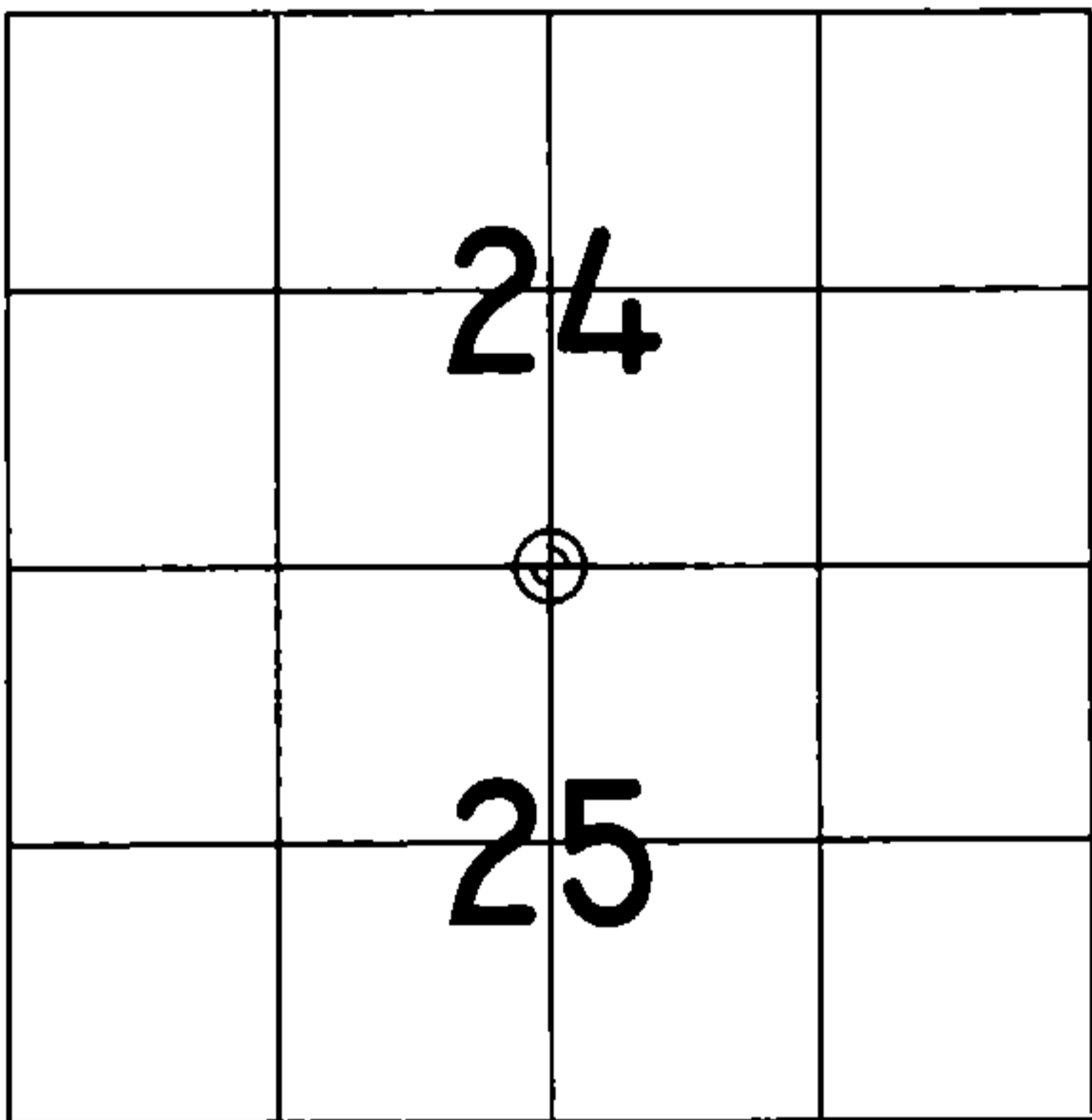
CEDAR 12" N43°E 17.15 FEET - SET D.H. NAIL IN TREE.

SET THE FOLLOWING WITNESSES:

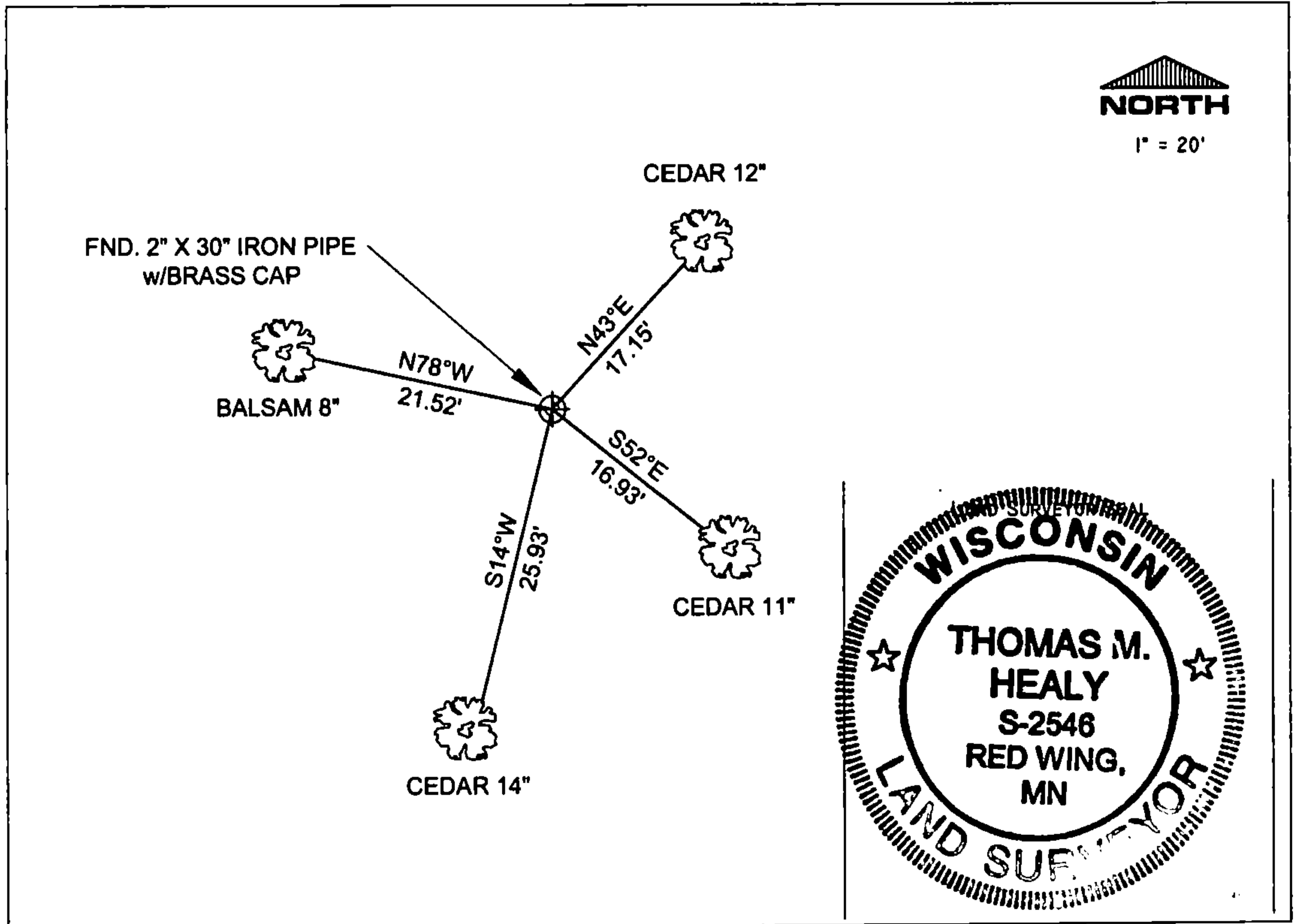
BALSAM 8" N78°W 21.52 FEET - SET D.H. NAIL IN TREE.  
CEDAR 11" S52°E 16.93 FEET - SET D.H. NAIL IN TREE.  
CEDAR 14" S14°W 25.93 FEET - SET D.H. NAIL IN TREE.

ALL TREES HAVE CHEST & STUMP BLAZES.

THE NORTH 1/4  
CORNER OF SECTION 25,  
T. 36 N., R. 13 E.,  
FOREST COUNTY, WISCONSIN



⊕ = LOCATION OF CORNER



I, THOMAS M. HEALY R.L.S. 2546

(TYPE OR PRINT NAME) CERTIFY THAT THE CORNER LOCATION SHOWN ON THIS ABOVE RECORD WAS DETERMINED BY ME OR UNDER MY DIRECTION AND CONTROL AND THAT THIS U.S. PUBLIC LAND SURVEY MONUMENT RECORD IS CORRECT AND COMPLETE TO THE BEST OF MY KNOWLEDGE AND BELIEF.

INDEX No. R-23

Thomas M. Healy 11-17-05  
SIGNATURE DATE

4361324 0020

R-23