

CERTIFIED LAND CORNER RESTORATION

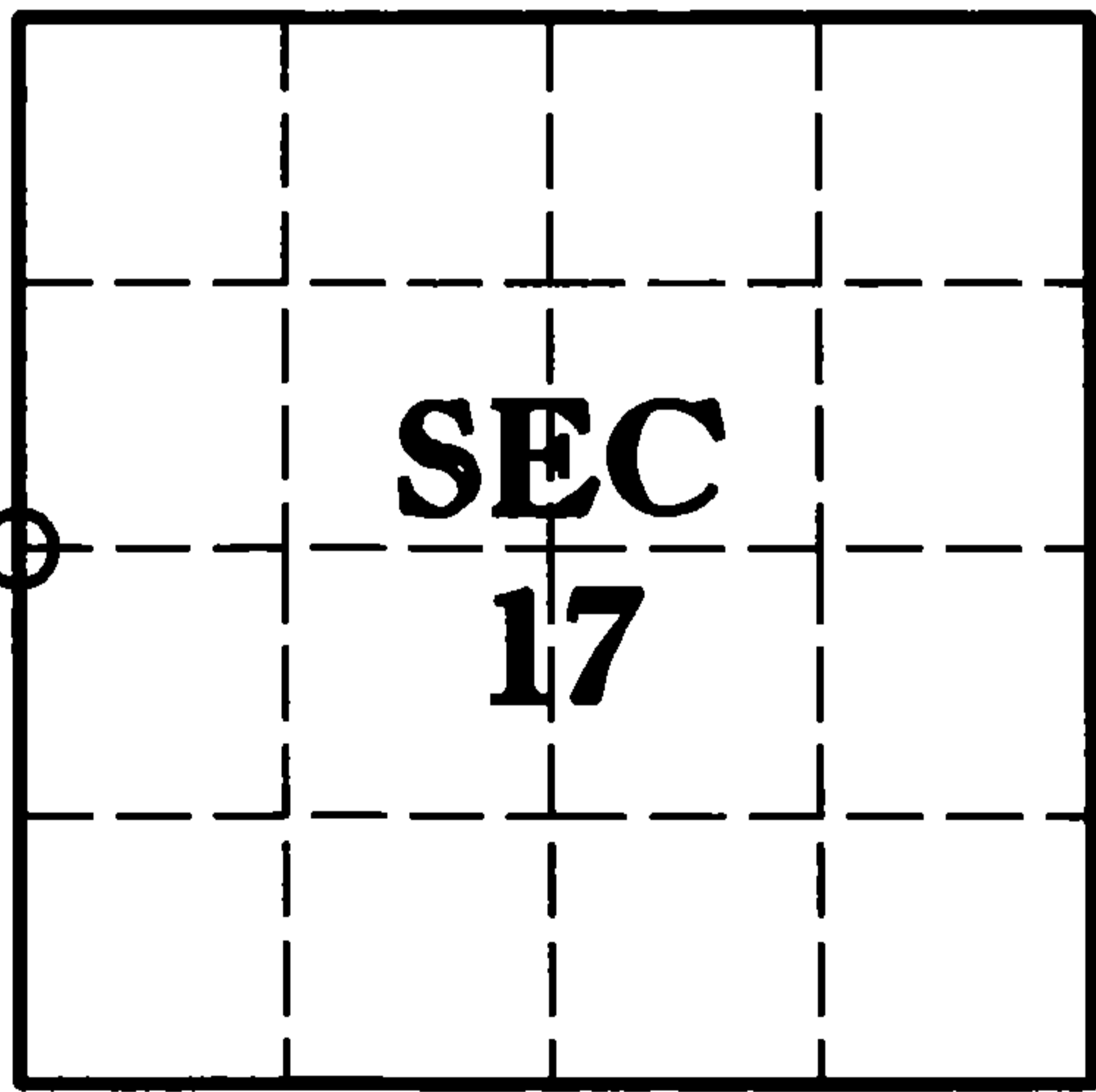
Index No. L-5

State of Wisconsin }
 County of Forest } ss.

I Thomas Fogarty, do hereby certify that on the 7th day of July, 2005, I found evidence of the 1/4 corner of sections 17 & 18 Township 36, North, Range 13 E, Fourth Principle Meridian, as described hereon; and that from this evidence I established a new monument and accessories as described hereon to perpetuate the original location of this corner.

Resident witnesses:
Kory Rentmeester, Brad Nelson

Forest County Coordinates:
N: 581835.266 (feet)
E: 835863.372 (feet)



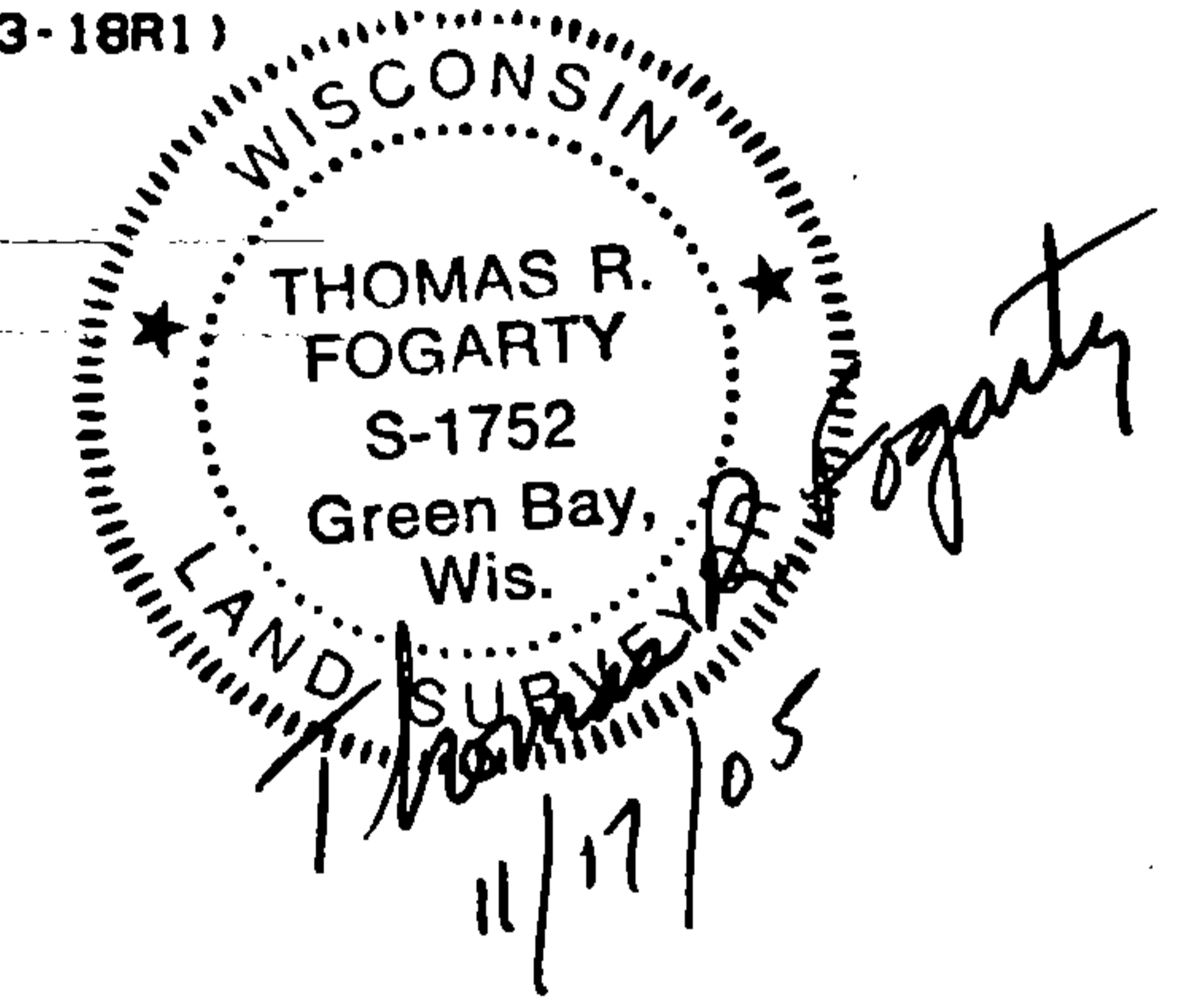
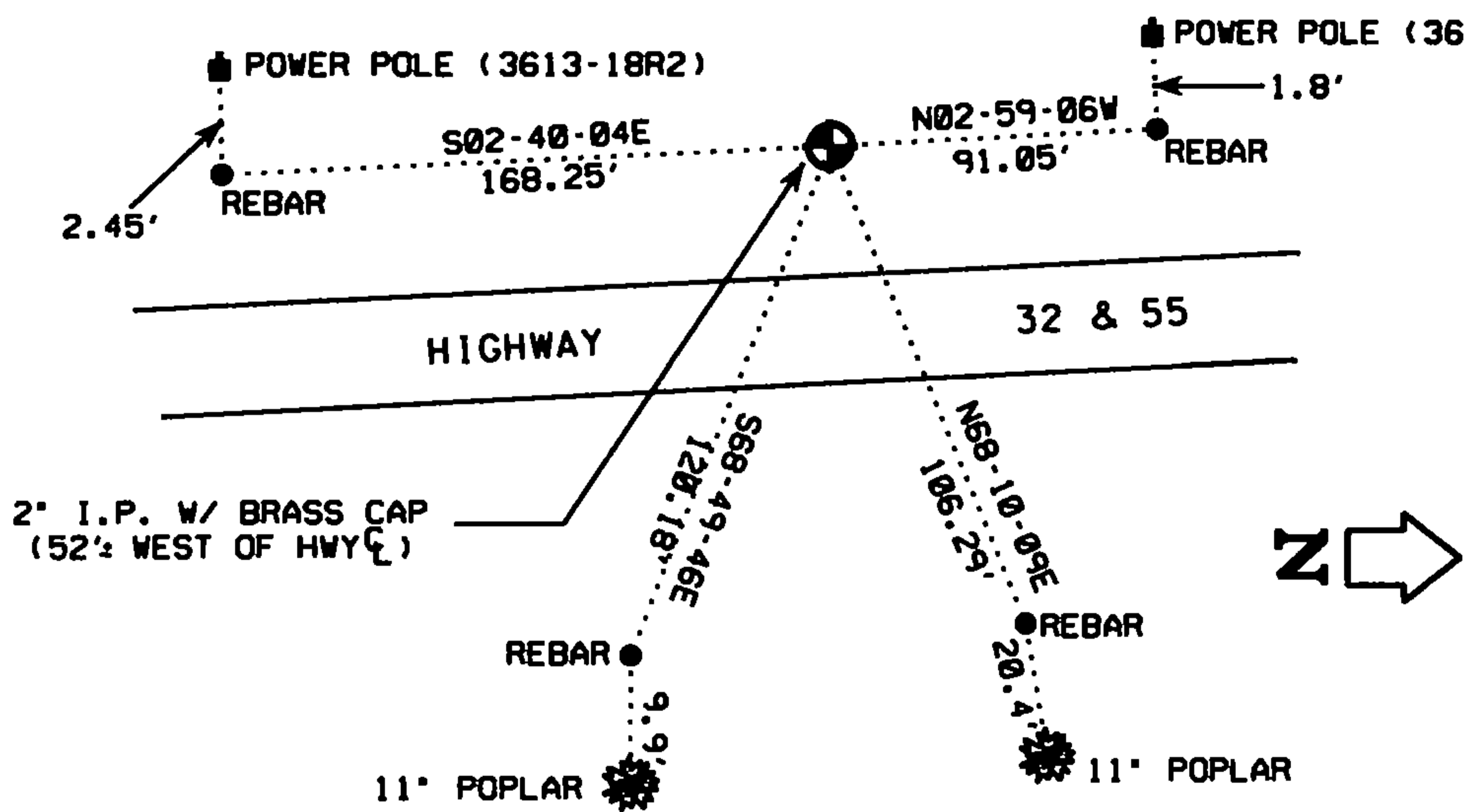
○ = Corner monument restored.

History of original corner establishment:

1865 - James L. Nowlin set original corner post and made the following B.T.'s:
 Tamarac 10 S33W 25 Lks.
 Tamarac 20 N83E 30 Lks.

1976 - Thomas R. Amott found original BT stump and set 2" iron pipe 4 feet long with brass cap N33E 16.5 feet from original stump and set the following ties:
 Power pole (3613 - 18R1) N4W 91.56 feet
 Cedar 8 S50W 51.16 feet
 Spruce 5 N72W 44.40 feet

2005 - I found a 2" iron pipe with brass cap and power pole (3613 - 18R1) 91 feet to the North.
 Set the following ties:
 Rebar 5/8" N68°10'09"E 106.29 feet
 Rebar 5/8" S68°49'46"E 120.18 feet
 Rebar 5/8" S2°40'04"E 168.25 feet
 Rebar 5/8" N2°59'06"W 91.05 feet



Dated at Crandon, Wis., this 17th day of November, 2005
 Signature Thomas R. Fogarty Title Registered Land Surveyor Registration No. S-1752
 (County Surveyor, Registered Land Surveyor, or other duly authorized official)

Office of Register of Deeds, County of Forest, I hereby certify that the within instrument was filed in this office for record on the 18th day of November, 2005 at 2:40 o'clock P M.

Kay Swanson, Deputy
 (Register of Deeds)

REGISTRER'S OFFICE
 Forest County, Wis.
 Received for record this 18th day of November A.D., 2005, at 2:40 o'clock P M. and recorded in Vol. Corner Restoration page L-5
Kay Swanson, Deputy
 Register of Deeds

Document Number
 189789

43013182000

CERTIFIED LAND CORNER RESTORATION

Index No. 2-55

State of Wisconsin }
County of Forest } ss.

I Thomas R. Arnett, do hereby certify that on the 5th day of January, 19 76, I found evidence of the 1/4 corner of sections 17 & 18 Township 36, North, Range 13 E, Fourth Principal Meridian, as described hereon; and that from this evidence I established a new monument and accessories as described hereon to perpetuate the original location of this corner.

Resident witnesses:

Herbert Wagoner

History of original corner establishment:

Original subdivision by James Nowlin June 2 - June 12, 1865

Tamarac 10 S33W 25 Lks.
Tamarac 20 N83E 30 Lks.

Description of corner evidence found:

Found original BT stump S33W 25 Lks.



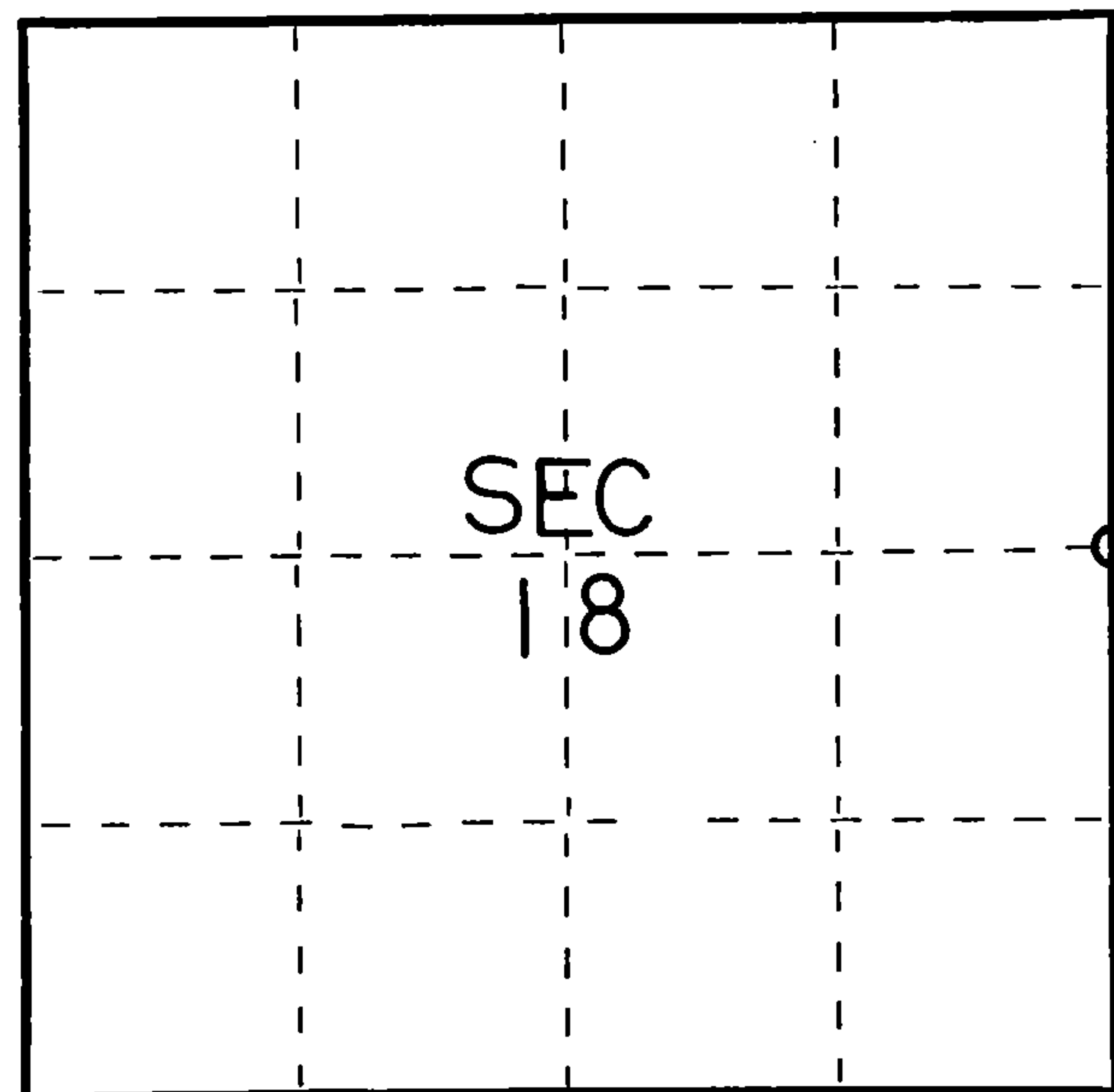
Description of monument and accessories I established to perpetuate the original location of this corner.

Set 2" iron pipe 4' long with brass cap N33E 16.5 feet from Original stump

Ties:

Power Pole (3613-18R21) N4W 91.56 feet
Cedar 8 S50W 51.16 feet
Spruce 5 N72W 44.40 feet

FORM 985 N. C. MILLER CO., MILWAUKEE



○ = Corner monument restored.

Dated at Crandon, Wis., this 9th day of January, 19 76

Signature Thomas Arnett Title Surveyor Registration No. S-887
(County Surveyor, Registered Land Surveyor, or other duly authorized official)

Office of Register of Deeds, County of Forest, I hereby certify that the within instrument was filed in this office for record on the 9th day of January, 19 76 at 11 o'clock A. M.

Eugene Staszny Document Number 108534
(Register of Deeds)

By _____ Deputy

43013182000