

CERTIFIED LAND CORNER RESTORATION

State of Wisconsin }
 County of Forest } ss.

I Kim H Pritzlaff, do hereby certify that on the 17th day of February, 1988, I found evidence of the Quarter corner of Sections 18 & 19 Township 36, North, Range 13, Fourth Principal Meridian, as described hereon; and that from this evidence I established a new monument and accessories as described hereon to perpetuate the original location of this corner.

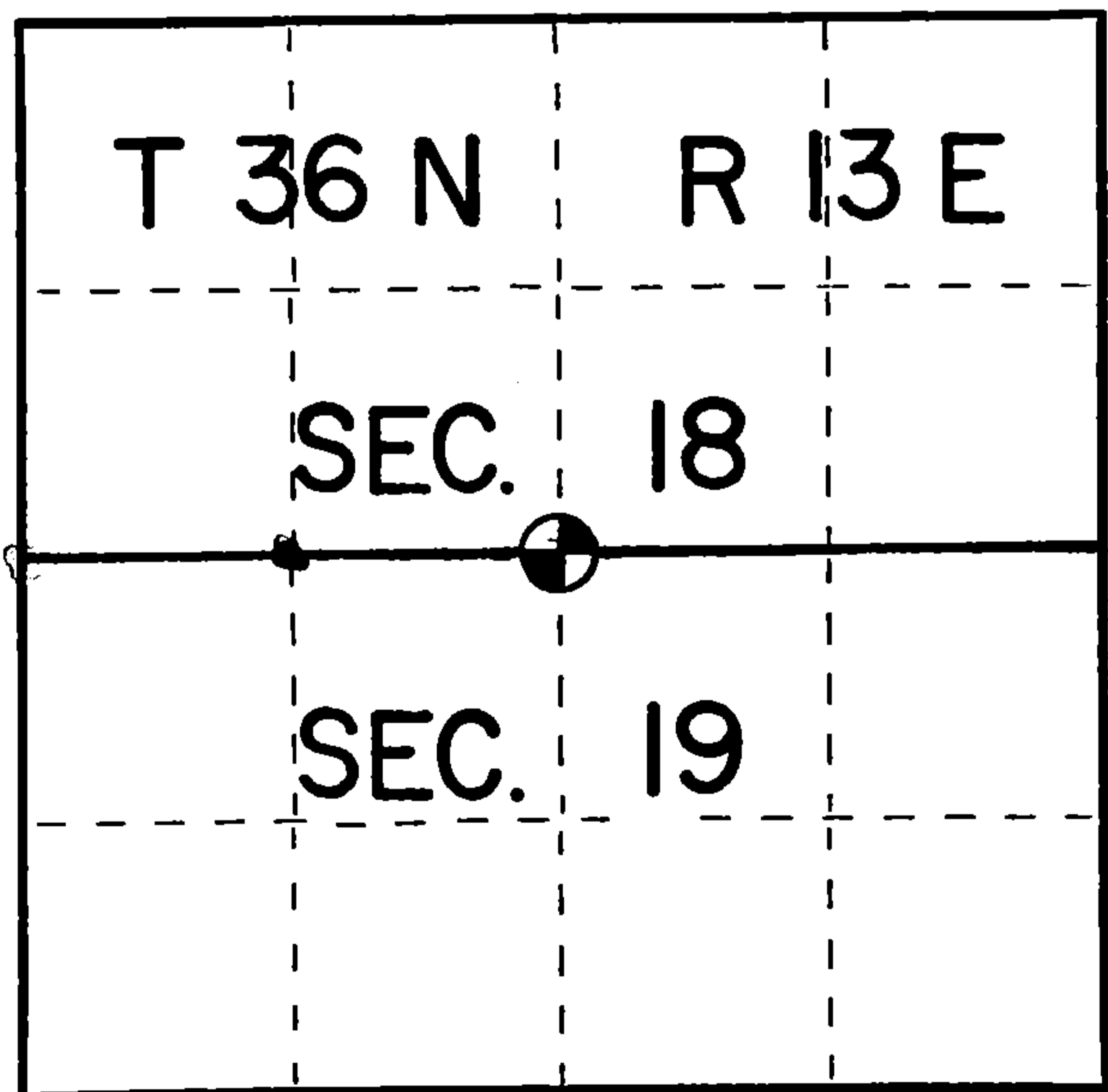
Resident witnesses:

Marke E Teuteberg, RLS

Harry Smith

DOCUMENT NUMBER
134722

FORM 985 H. C. MILLER CO., MILWAUKEE



○ = Corner monument restored.

History of original corner establishment:

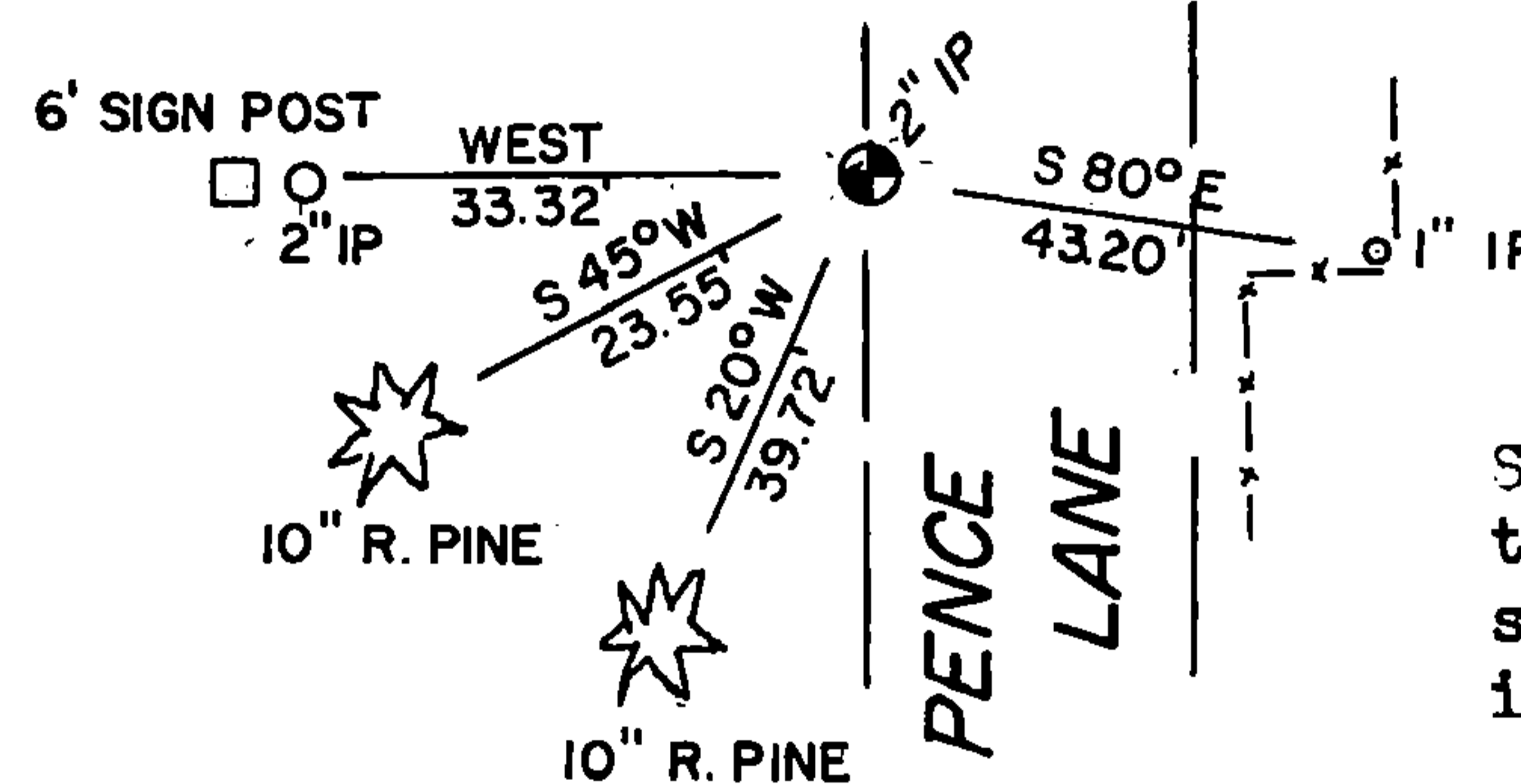
In 1865 James Nowlin, contract surveyor with the government, set this corner using a wood post and the following bearing trees:
 Spruce 10" S40W 16 links
 Hemlock 8" North 13 links

In 1918 I.R. Ritter resurveyed Section 19 and restores this corner using a 3" iron pipe and two 2 1/2" iron pipe set east and west as accessories.

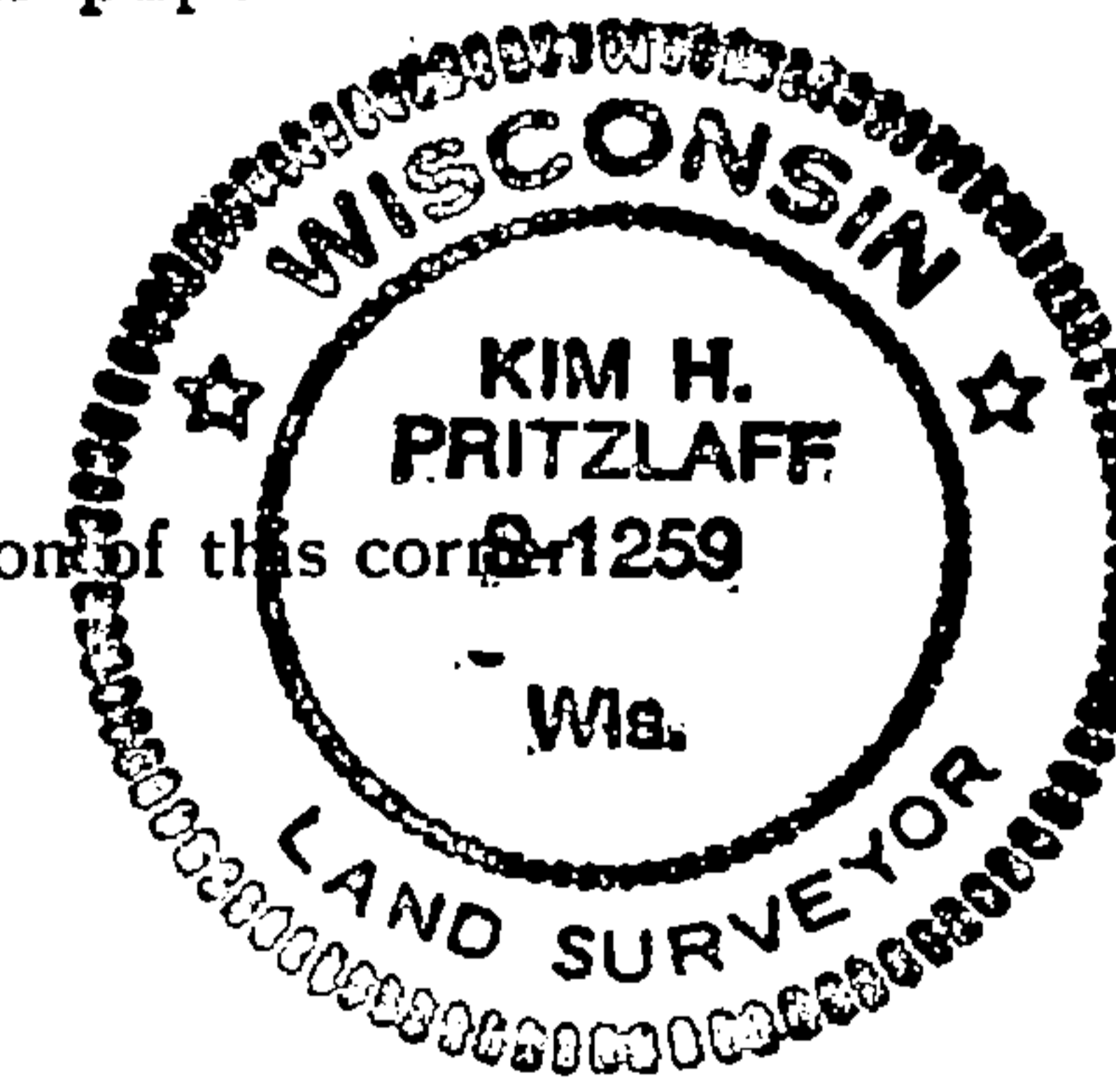
Description of corner evidence found:

I located a large diameter iron pipe just west of the gravel roadway in a fence intersection to the west. 33 feet to the west I also found a 2 1/2" iron pipe as Ritter's accessory. I accepted the iron pipe on the west edge of the road bed as Ritter's perpetuation which fit his record distance to the east within 8 feet. I kept the iron pipe as the actual corner and tied it in with the accessories shown below.

Description of monument and accessories I established to perpetuate the original location of this corner:



Set an 8 penny aluminum spike in the two trees shown along with a 6 foot steel sign post and a 1"x 2 1/4" iron pipe in the fence line as shown for accessories.



4361318020

Dated at Oconto Falls, Wis., this 19th day of February, 1988

Signature Kim H Pritzlaff Title Registered Land Surveyor Registration No. 1259
 (County Surveyor, Registered Land Surveyor, or other duly authorized official)

Office of Register of Deeds, County of Forest, I hereby certify that the within instrument was filed in this office for record on the 26th day of February, 1988 at 6:50 o'clock A. M.

Paul Aschenbrenner
 (Register of Deeds)

By _____ Deputy

Describe any material discrepancy between the location of the corner as restored or reestablished and the location of that corner as previously restored or reestablished by distance and direction. Show the discrepancy on the plan view drawing under (d), above. Show the distances between the corner as previously restored or reestablished and (1) the corner as restored or reestablished, and (2) to at least 2 of the witness monuments shown on the drawing in (d), above.

NONE

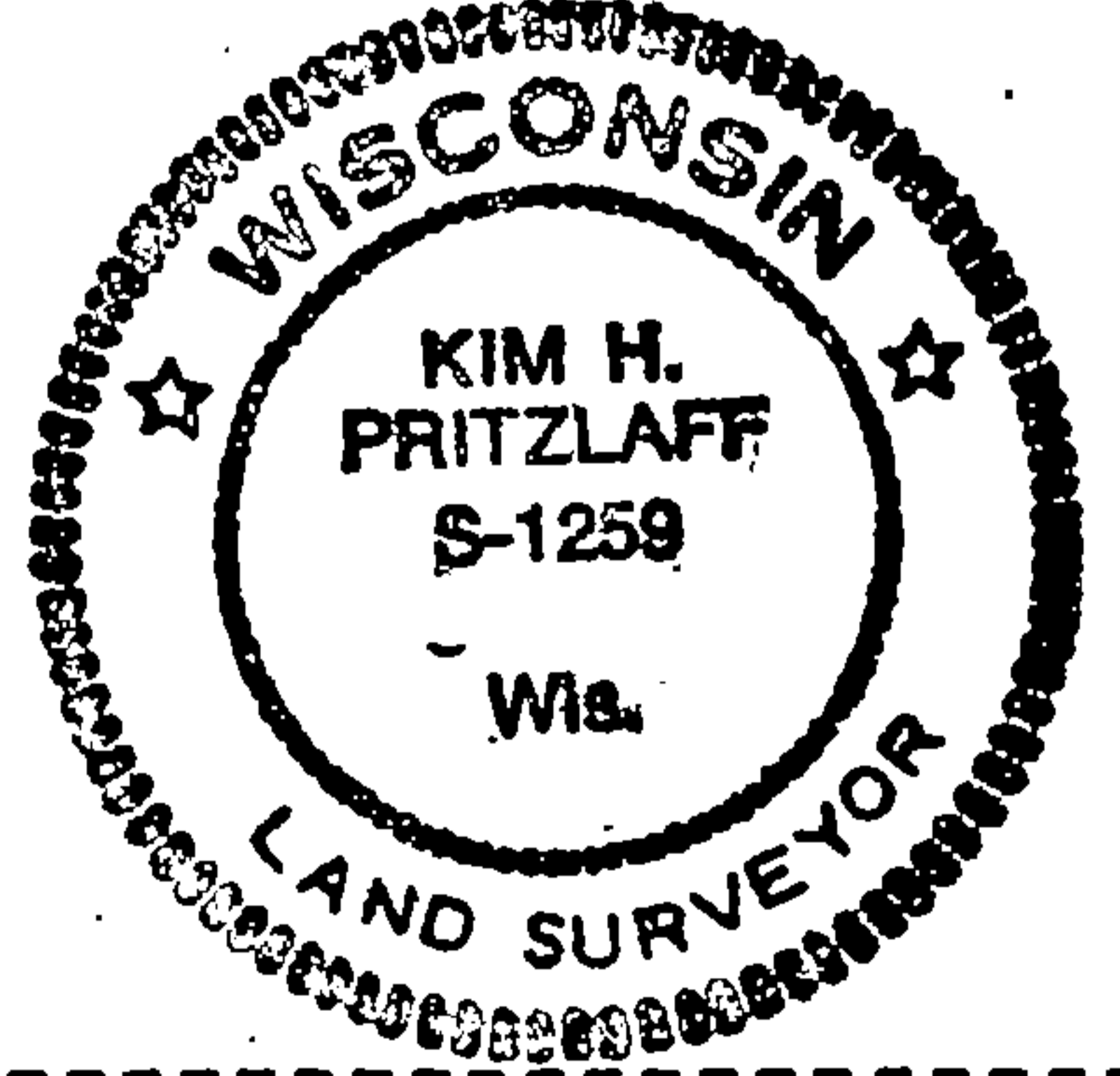
(f) Was the corner restored through acceptance of (1) an obliterated evidence location, or, (2) a found perpetuated location?

FOUND PERPETUATED LOCATION

(g&h) Was the corner reestablished through lost corner proportionate methods? If so, show the method, including the directions and distances to other public land survey corners used as evidence or used for proportioning in determining the corner location?

No

Affix Land Surveyor Seal



(i) I, KIM H. PRITZLAFF
(type or print name) certify that the corner location shown on this record was determined by me or under my direction and control and that this U.S. Public Land Survey Monument Record is correct and complete to the best of my knowledge and belief.

Kim H. Pritzlaff

Signature

2/19/88

Date