

CERTIFIED LAND CORNER RESTORATION

Index No. N-77

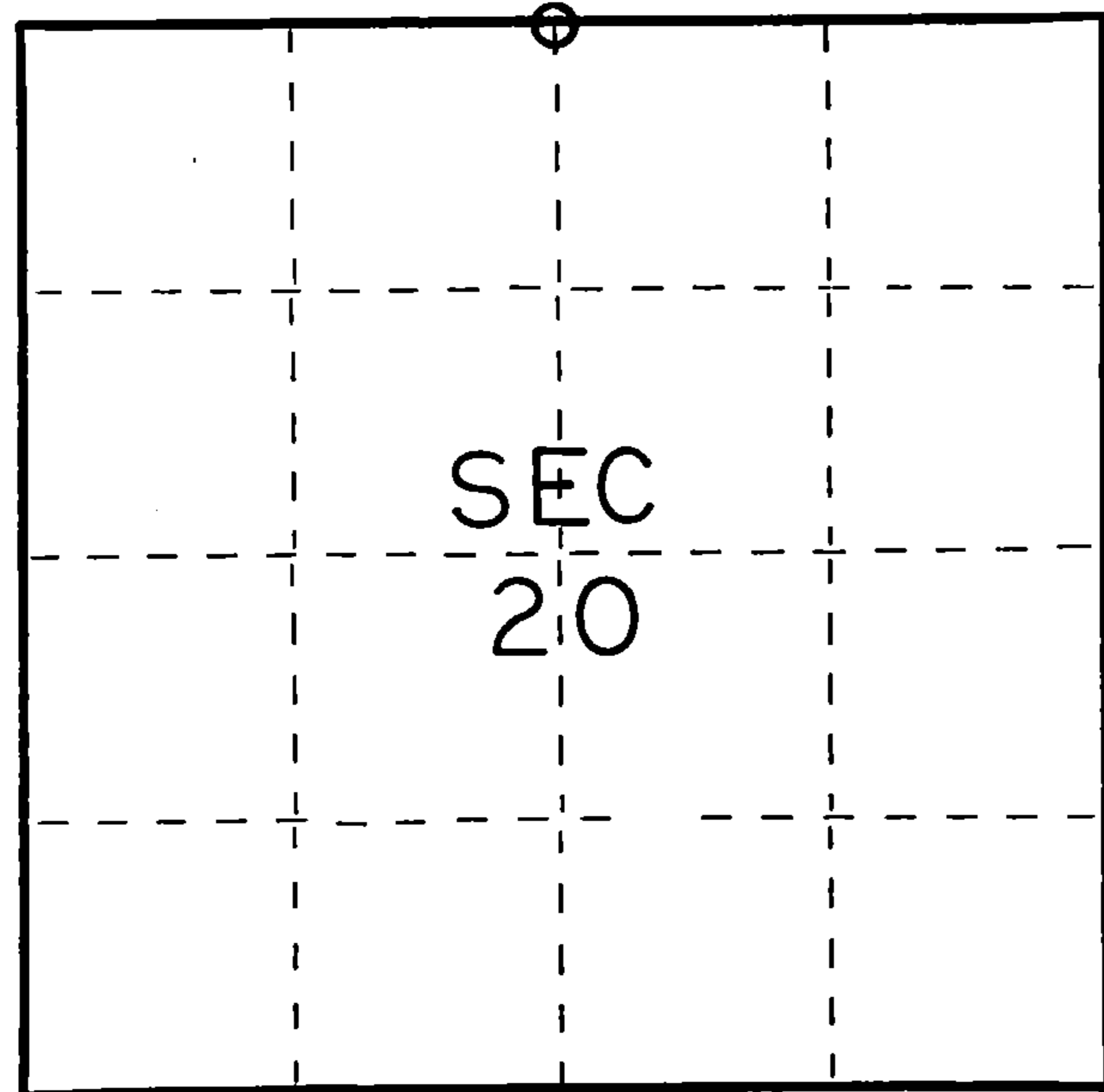
State of Wisconsin }
County of Forest } ss.

I Thomas R. Arnott, do hereby certify that on the 6th day of January, 19 76, I found evidence of the 1/4 corner of sections 17 & 20 Township 36, North, Range 13 E, Fourth Principal Meridian, as described hereon; and that from this evidence I established a new monument and accessories as described hereon to perpetuate the original location of this corner.

Resident witnesses:

Hertbert Wagoner

FORM 985 W. C. MILLER CO., MILWAUKEE



○ = Corner monument restored.

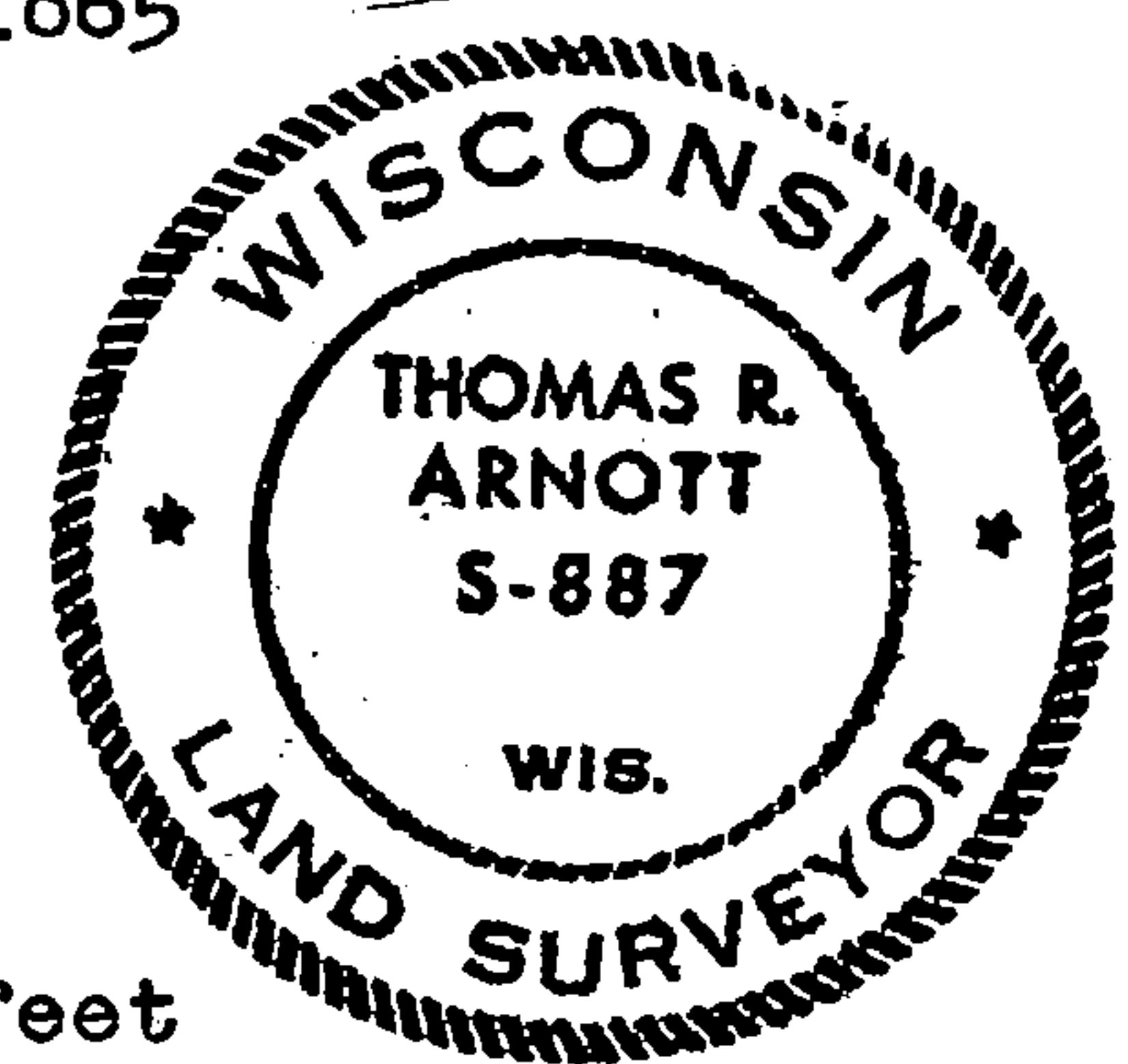
History of original corner establishment:

Original subdivision by James Nowlin June 2 - June 12, 1865

Tamarac 10 N75E 30 Lks.
Tamarac 12 S5W 35 Lks.

Description of corner evidence found:

1" iron pipe found
Original BT stumps found
Old BT blaze found on Tamarac 8 S41E 24.54 feet



Description of monument and accessories I established to perpetuate the original location of this corner.

Replaced iron pipe with a new Forest County aluminum monument

Ties:

Tamarac 8 S41E 24.54 feet (BT found)
Tamarac 8 S57W 17.42 feet
Tamarac 8 N79W 11.44 feet

Dated at Crandon, Wis., this 9th day of January, 19 76.

Signature Thomas Arnott Title Surveyor Registration No. S-887
(County Surveyor, Registered Land Surveyor, or other duly authorized official)

Office of Register of Deeds, County of Forest, I hereby certify that the within instrument was filed in this office for record on the 9th day of January, 19 76 at 11 o'clock A. M.

Eugene Staszny Document Number 108536
(Register of Deeds)

By _____ Deputy

43013170020

CERTIFIED LAND CORNER RESTORATION

Index No. N-7

State of Wisconsin }
 County of Forest } ss.

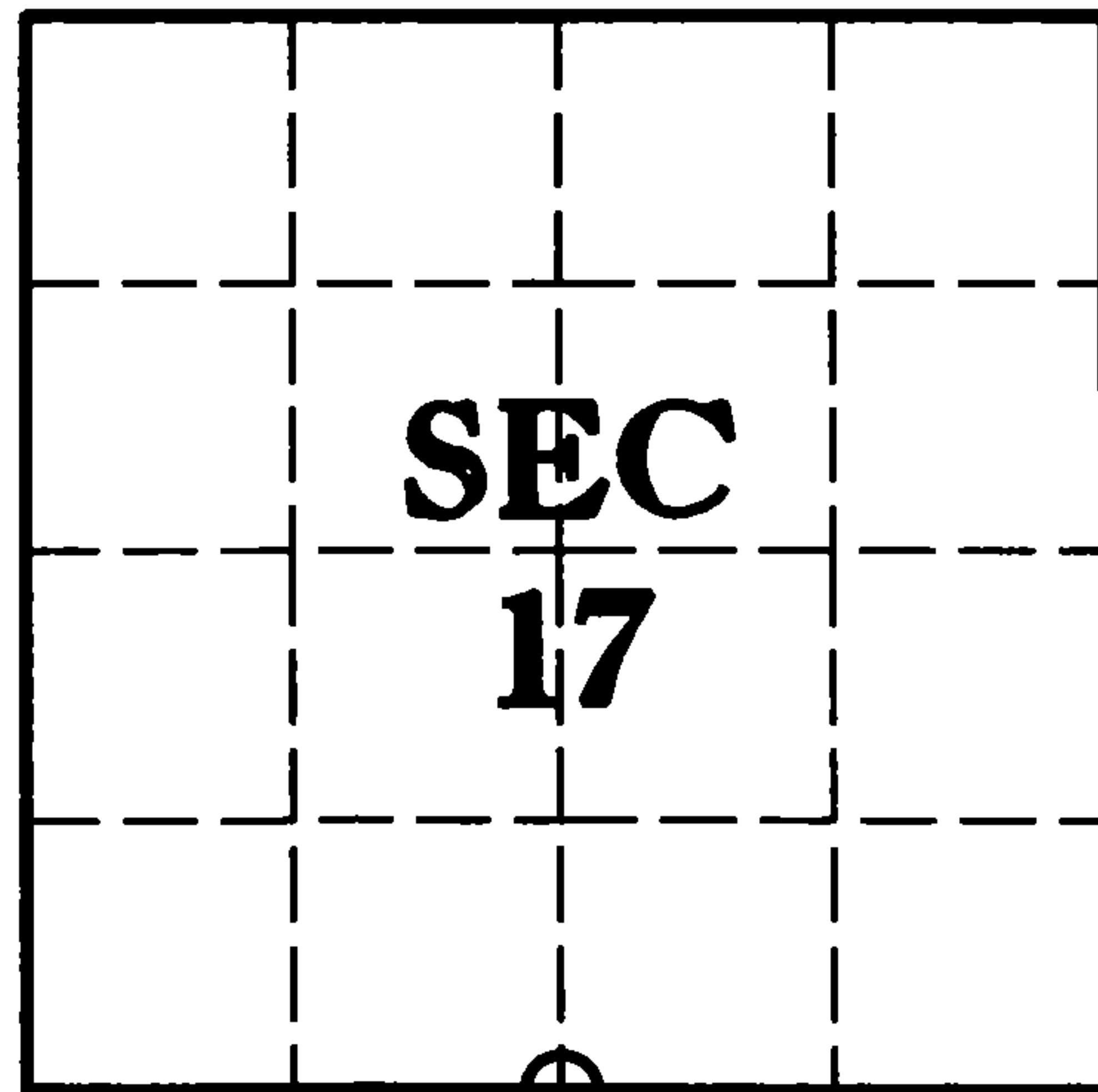
I Thomas Fogarty, do hereby certify that on the 1st day of June, 2005, I found evidence of the 1/4 corner of sections 17 & 20 Township 36, North, Range 13 E, Fourth Principle Meridian, as described hereon; and that from this evidence I established a new monument and accessories as described hereon to perpetuate the original location of this corner.

Resident witnesses:

Kory Rentmeester, Brad Nelson

Forest County Coordinates:

N: 579166.625 (feet)
E: 838632.786 (feet)



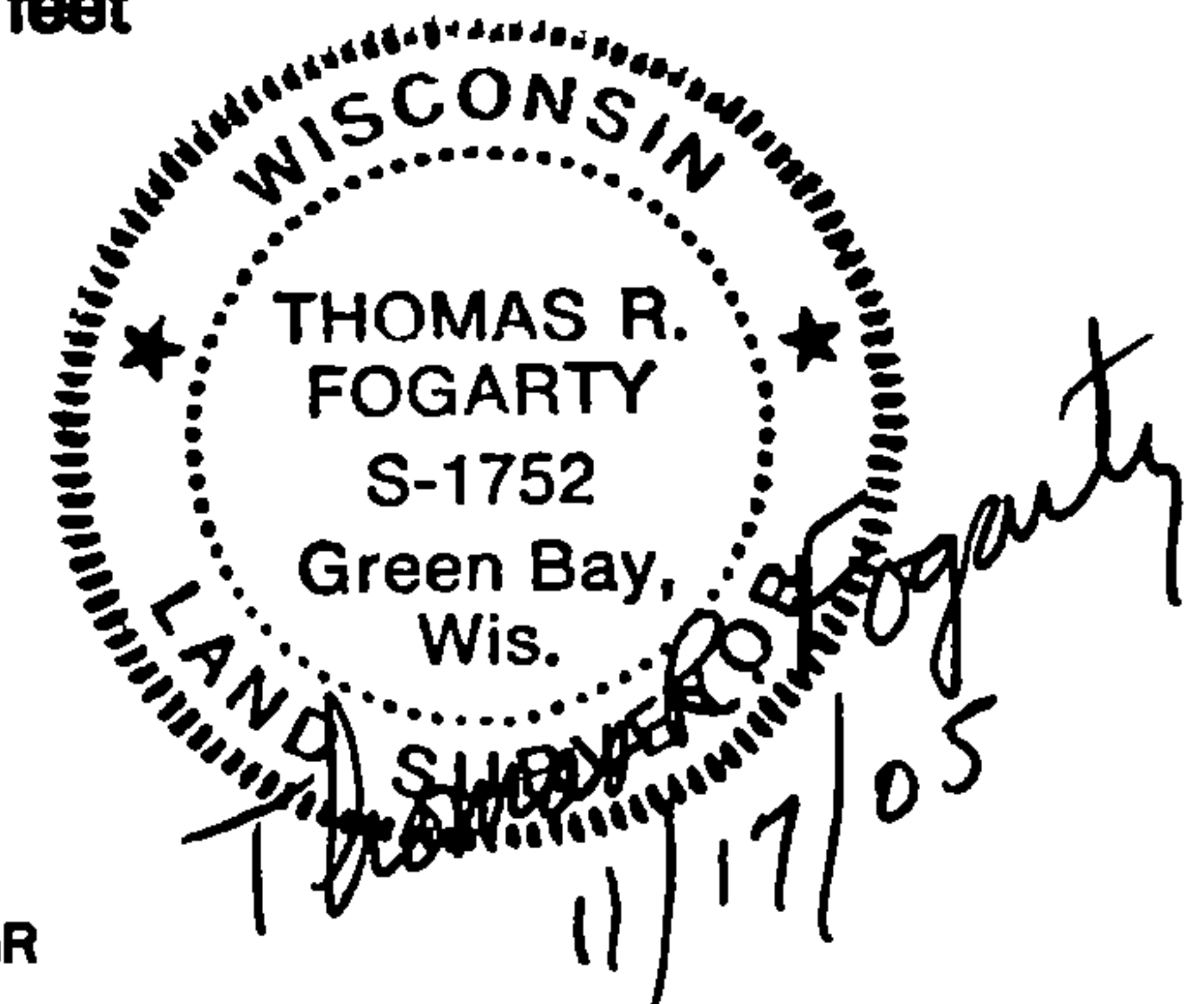
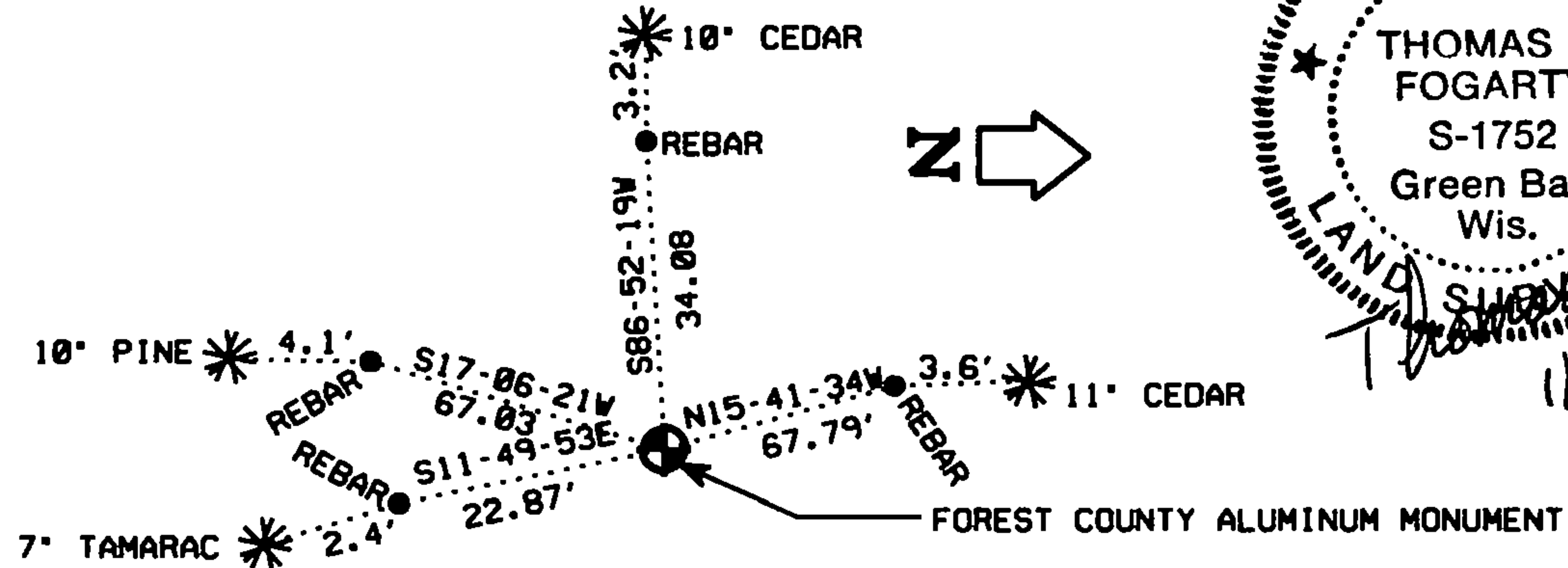
○ = Corner monument restored.

History of original corner establishment:

1865 - James L. Nowlin set original corner post and made the following B.T.'s:
 Tamarac 12 S5W 35 Lks.
 Tamarac 10 N75E 30 Lks.

1976 - Thomas R. Arnott found 1" iron pipe and original BT stumps. He replaced the iron pipe with a new Forest County aluminum monument and set the following ties:
 Tamarac 8 S41E 24.54 feet (BT found)
 Tamarac 8 S57W 17.42 feet
 Tamarac 8 N79W 11.44 feet

2005 - I found a Forest County aluminum monument and BT stumps. Set the following ties:
 Rebar 5/8" N15°41'34"W 67.79 feet
 Rebar 5/8" S86°52'19"W 34.08 feet
 Rebar 5/8" S11°49'53"E 22.87 feet
 Rebar 5/8" S17°06'21"W 67.03 feet



43613170020

REGISTER'S OFFICE
 Forest County, Wis.
 Received for record this 18th day of November A.D., 2005 at 2:40 o'clock P. M. and recorded in Vol. Corner Restoration page N-7

Kay Swanson, Deputy
 Register of Deeds

Document Number

189292

Dated at Crandon Wis., this 17th day of November, 2005
 Signature Thomas R. Fogarty Title Registered Land Surveyor Registration No. S-1752
 (County Surveyor, Registered Land Surveyor, or other duly authorized official)

Office of Register of Deeds, County of Forest, I hereby certify that the within instrument was filed in this office for record on the 18th day of November, 2005 at 2:40 o'clock P. M.

Kay Swanson, Deputy
 (Register of Deeds)