

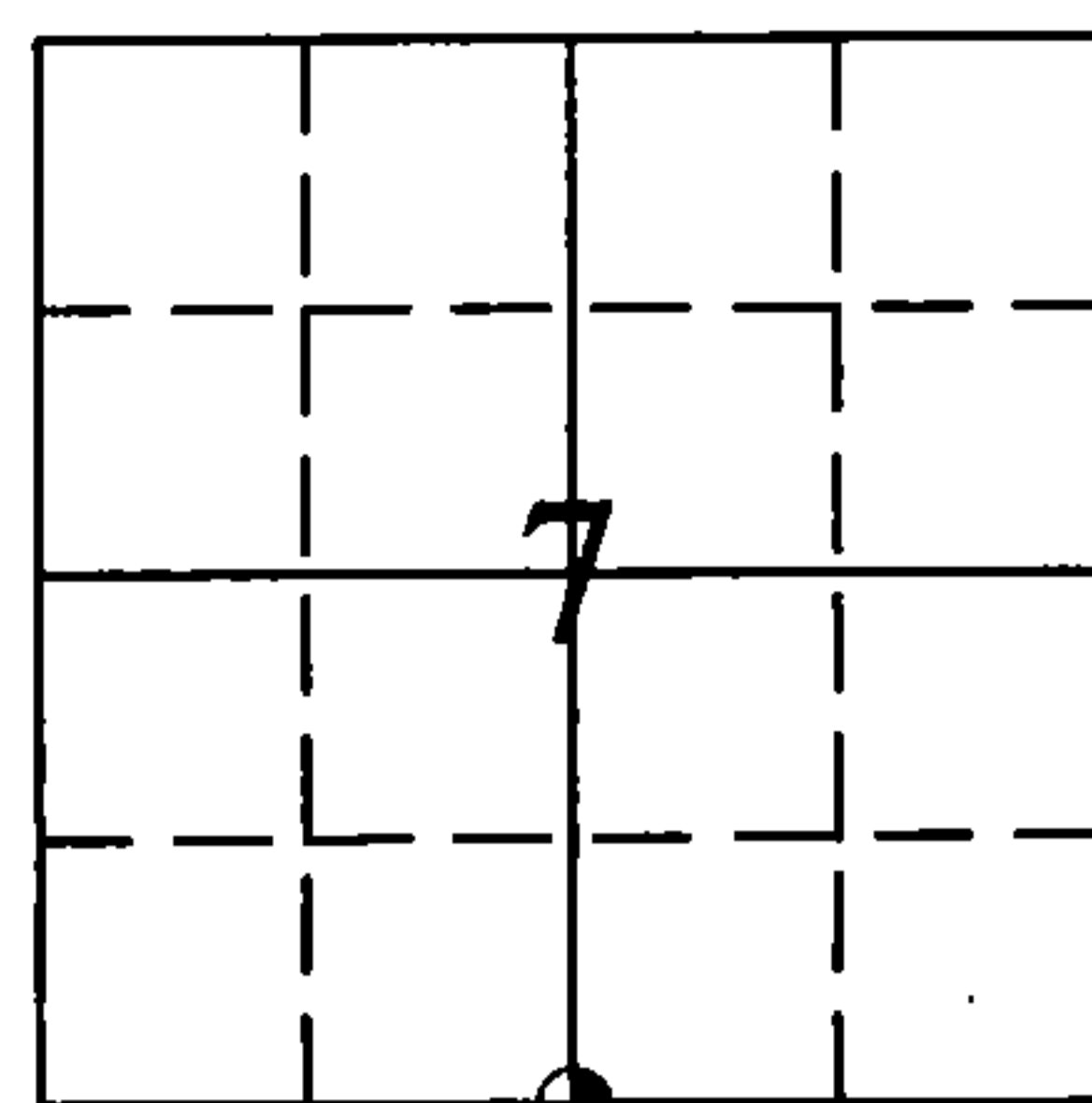
Document Number  
217629

REGISTER'S OFFICE  
Forest County, Wis.  
Received for record this 24th day  
of July A.D., 2015 at  
4:15 o'clock P.M. and recorded  
in Vol. Corner Restoration  
Erika Z. Deaton, Deputy  
Register of Deeds

# U.S. PUBLIC LAND SURVEY MONUMENTATION RECORD

(AS REQUIRED BY S. A-E 7.08, WI ADM. CODE)

CORNER: SOUTH 1/4 INDEX NUMBER: J-3  
SECTION: 7 TOWNSHIP: T36N RANGE: R13E  
TOWN/CITY/VILLAGE: TOWN OF LINCOLN  
COUNTY: FOREST STATE: WISCONSIN



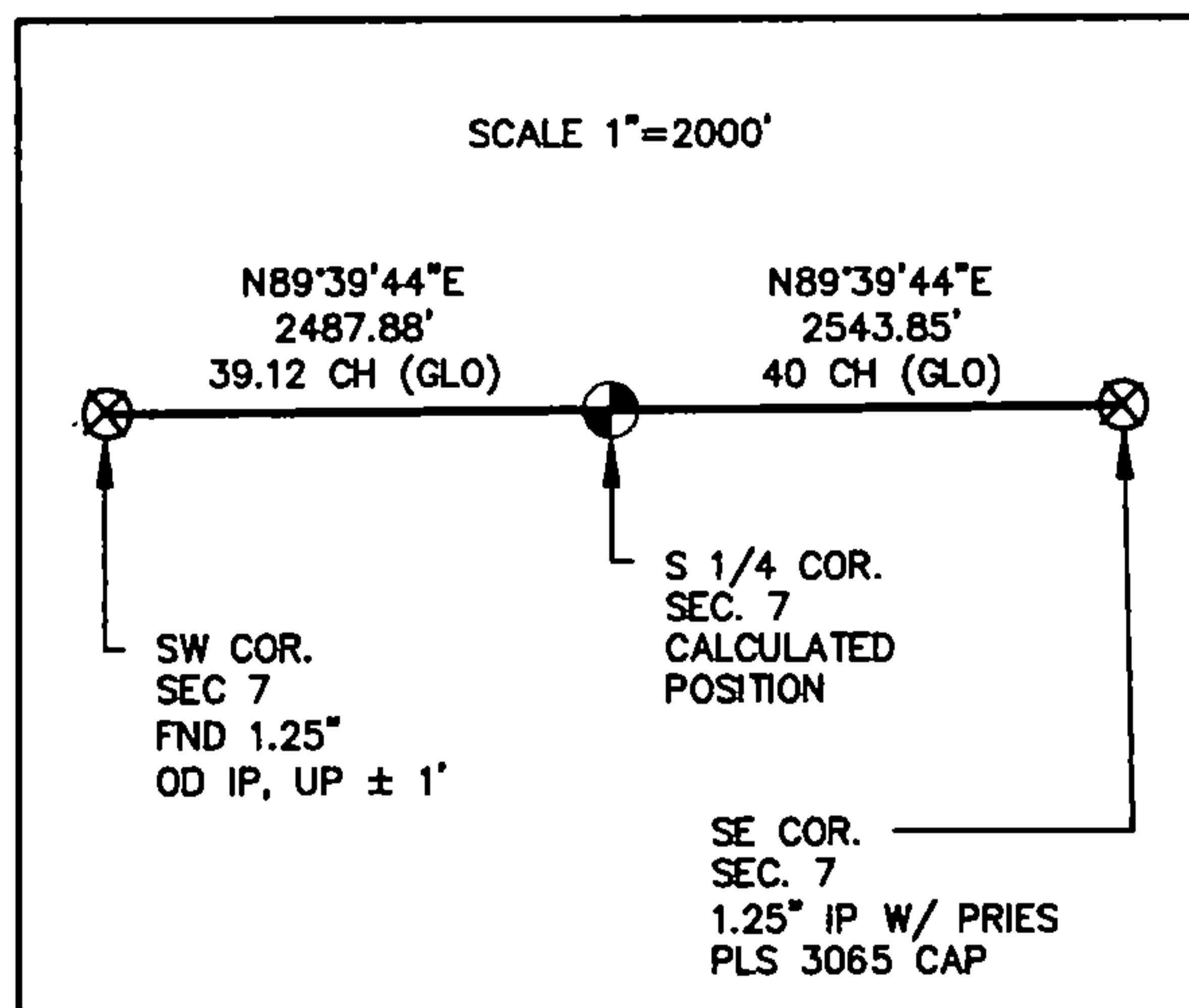
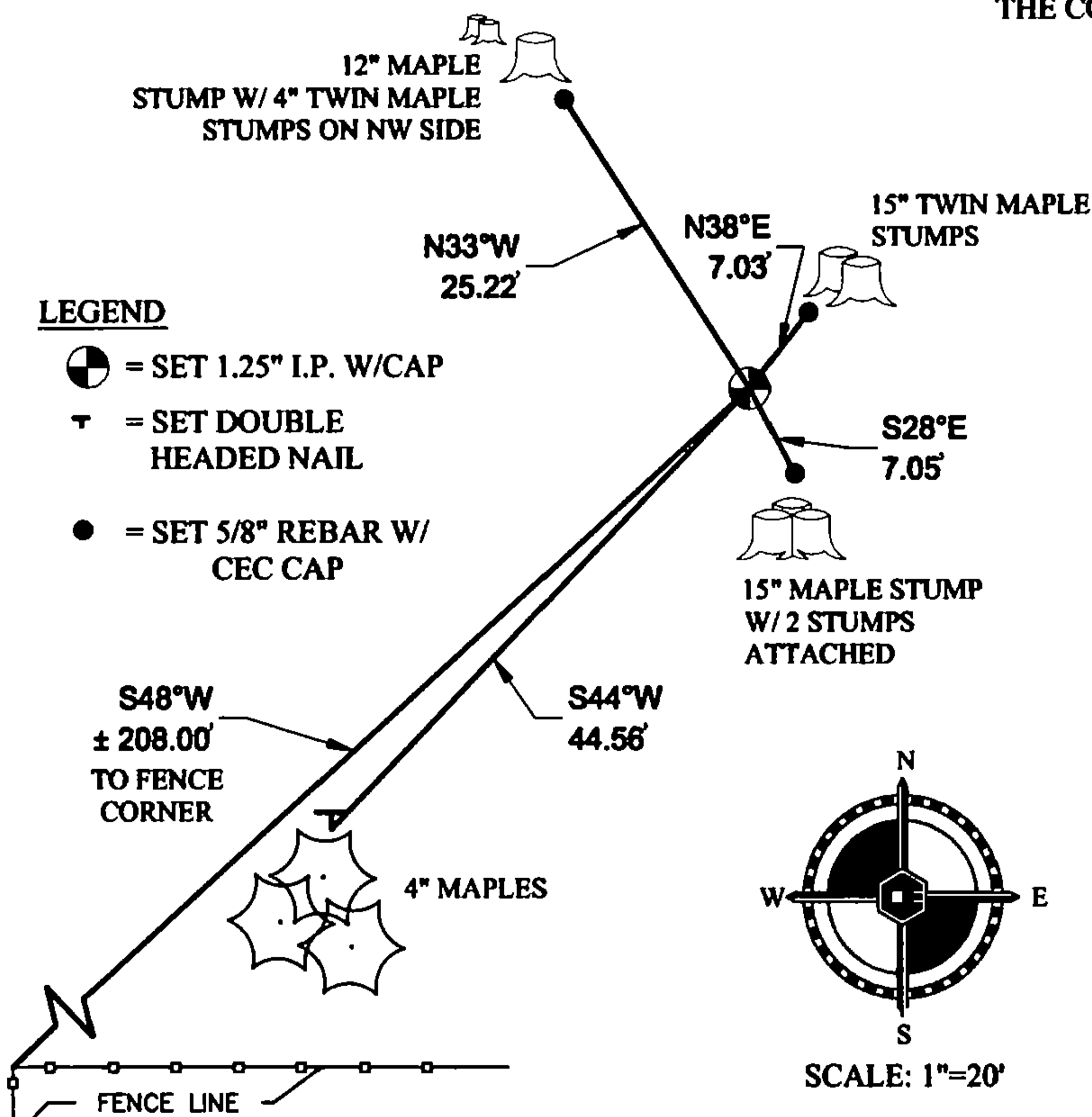
⊙ = CORNER LOCATION

HISTORY OF ORIGINAL CORNER ESTABLISHMENT AND SUBSEQUENT RESTORATIONS AND DESCRIPTION OF ANY RECORD, MONUMENT, OCCUPATIONAL, TESTIMONIAL, OR OTHER EVIDENCE CONSIDERED:

1865: JAMES L. NOWLIN, SET 1/4 CORNER POST  
30" HEMLOCK N35°W 10 LINKS  
12" CEDAR S25°W 15 LINKS

**CORNER WAS: (CHECK ALL THAT APPLY)**

- RESTORED THROUGH ACCEPTANCE OF AN OBLITERATED LOCATION
- RESTORED THROUGH ACCEPTANCE OF A FOUND PERPETUATED LOCATION
- RESTORED OR REESTABLISHED IN A LOCATION THAT DIFFERS FROM A PREVIOUS RESTORATION OR REESTABLISHMENT (INCLUDE A PLAN VIEW DRAWING AND INDICATE WHAT WAS SET AND/OR FOUND)
- CONSIDERED A LOST CORNER AND REESTABLISHED THROUGH LOST CORNER PROPORTIONATE METHODS (INCLUDE A PLAN VIEW DRAWING SHOWING DISTANCES AND DIRECTIONS TO OTHER PUBLIC LAND SURVEY CORNERS USED FOR PROPORTIONING AND DETERMINING THE CORNER LOCATION)



DESCRIBE THE MONUMENT AND ACCESSORIES USED TO PERPETUATE THE LOCATION OF THIS CORNER. (INCLUDE A PLAN VIEW DRAWING AND INDICATE WHAT WAS SET AND/OR FOUND)

CASEY J. PRIES PLS# S-3065, SET 1.25" x 24" I.P. WITH PLASTIC PRIES PLS-3065 CAP USING SINGLE PROPORTIONATE METHODS. CORNER IS LOCATED N48°E ±208' FROM FENCE CORNER OF EAST AND SOUTH FENCE LINES.

SET THE FOLLOWING WITNESSES:

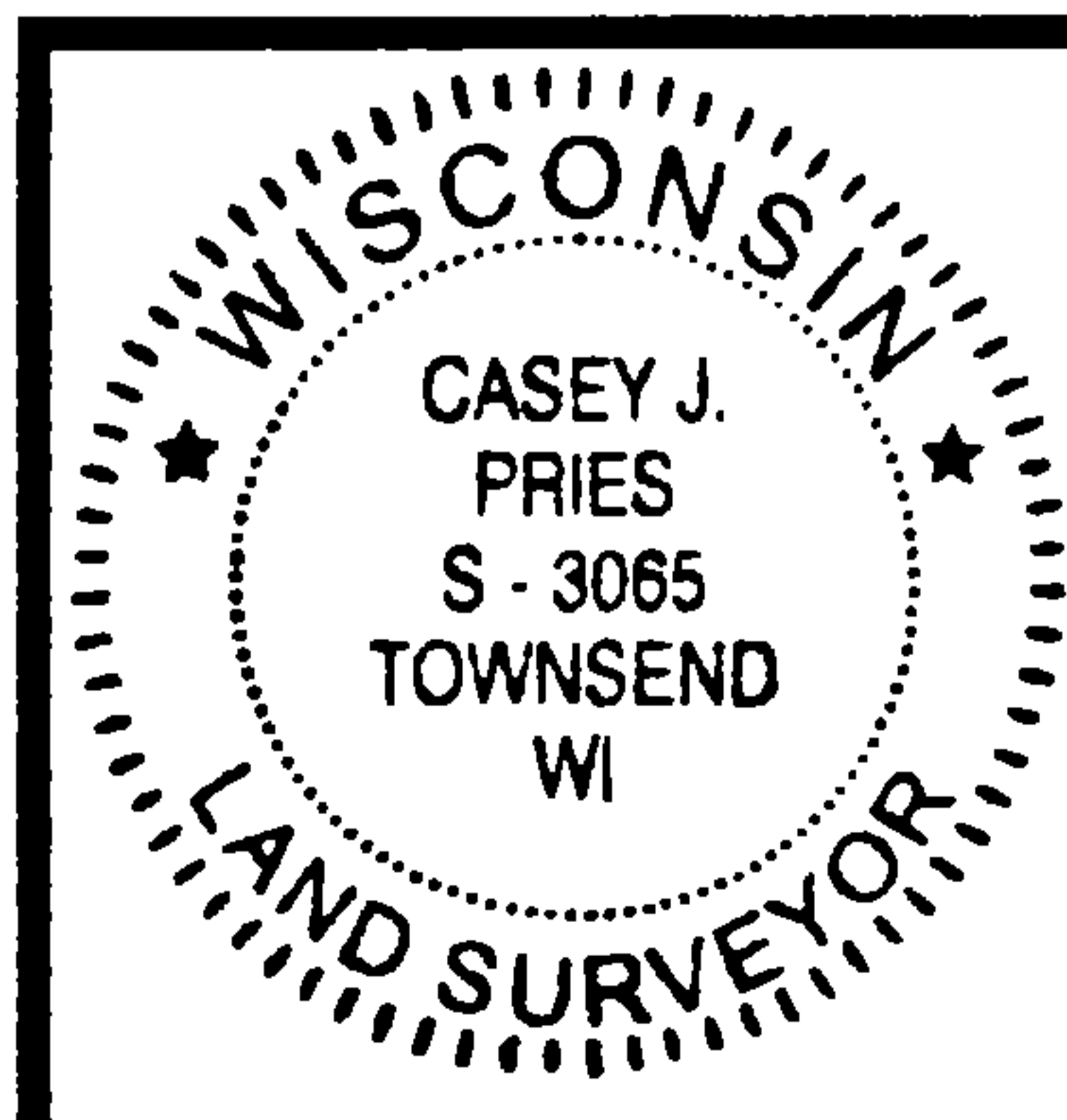
- 5/8" REBAR W/ CEC CAP 0.8' WEST OF TWIN 15" MAPLE STUMPS N38°E 7.03'
- 5/8" REBAR W/ CEC CAP 0.7' NORTH OF 15" MAPLE STUMP W/ TWO OTHER STUMPS ATTACHED S28°E 7.05'
- 4" MAPLE (GROUP OF 3) S44°W 44.56'
- 5/8" REBAR W/ CEC CAP 0.7' SE OF 12" MAPLE STUMP WITH TWIN 4" MAPLE STUMPS ON NW SIDE N33°W 25.22'

NOTE: ALL WITNESS TREES HAVE CHEST AND STUMP BLAZES WITH DOUBLE HEADED NAIL AT BASE. DISTANCES ARE MEASURED TO DOUBLE HEADED NAIL OR TO 5/8" REBAR WITH CEC CONTROL CAP. ALL EXISTING STUMPS HAVE STUMP BLAZES.

SIGNATURE: *Casey Pries*

DATE: 7-24-15

Index No. J-3



I, CASEY J. PRIES PLS S-3065  
CERTIFY THAT THE CORNER LOCATION SHOWN ON THIS ABOVE RECORD WAS DETERMINED BY ME OR UNDER MY DIRECTION AND CONTROL AND THAT THIS U.S. PUBLIC LAND SURVEY MONUMENT RECORD IS CORRECT AND COMPLETE TO THE BEST OF MY KNOWLEDGE AND BELIEF.



COLEMAN ENGINEERING COMPANY  
635 CIRCLE DRIVE, IRON MOUNTAIN, MI 49801  
PHONE: (906) 774-3440 FAX: (906) 774-7776

DRAWN: MJT FB 430, PG:72 DATE: 7/24/15 JOB NO. 15127-B

43613070020