

**Document Number**  
**175890**

REGISTER'S OFFICE }  
Forest County, Wis. }  
Received for record this 16<sup>th</sup> day  
of June A.D., 2002 at  
4:00 o'clock P.M. and recorded  
in Vol. Corner Restoration  
page C-5  
Kay Swanson, Deputy  
Register of Deeds

**U.S. PUBLIC LAND SURVEY MONUMENT RECORD**

(As Required by WI Adm. Code)

History of original corner establishment and subsequent restorations and descriptions of any record, monument, occupational, testimonial or other evidence considered:

1865 - James L. Nowlin, set original corner post and made the following B.T.'s:

- Tamarack, 4", S 87° E, 15 lks., 9.90 feet.
- Spruce, 5", N 10° W, 50 lks., 33.00 feet.

1988 - William Kelly set a 1" X 30" Iron Pipe for the W 1/4 of Sec. 5.  
He describes the corner est. by occupation on his Certified Survey Map recorded in Volume 4, Page 50.

2002 - I found no evidence of the original corner post or accessories.  
I found William Kelly's 1" diameter by 30" long Iron Pipe at old swamp road intersection (PI of old Hwy. 32). I accepted the iron pipe as the best available evidence of the corner position. Replaced existing iron pipe with a 2 1/2" diameter Forest County Aluminum Monument stamped for the 1/4 corner.

Corner was: (Check All That Apply)

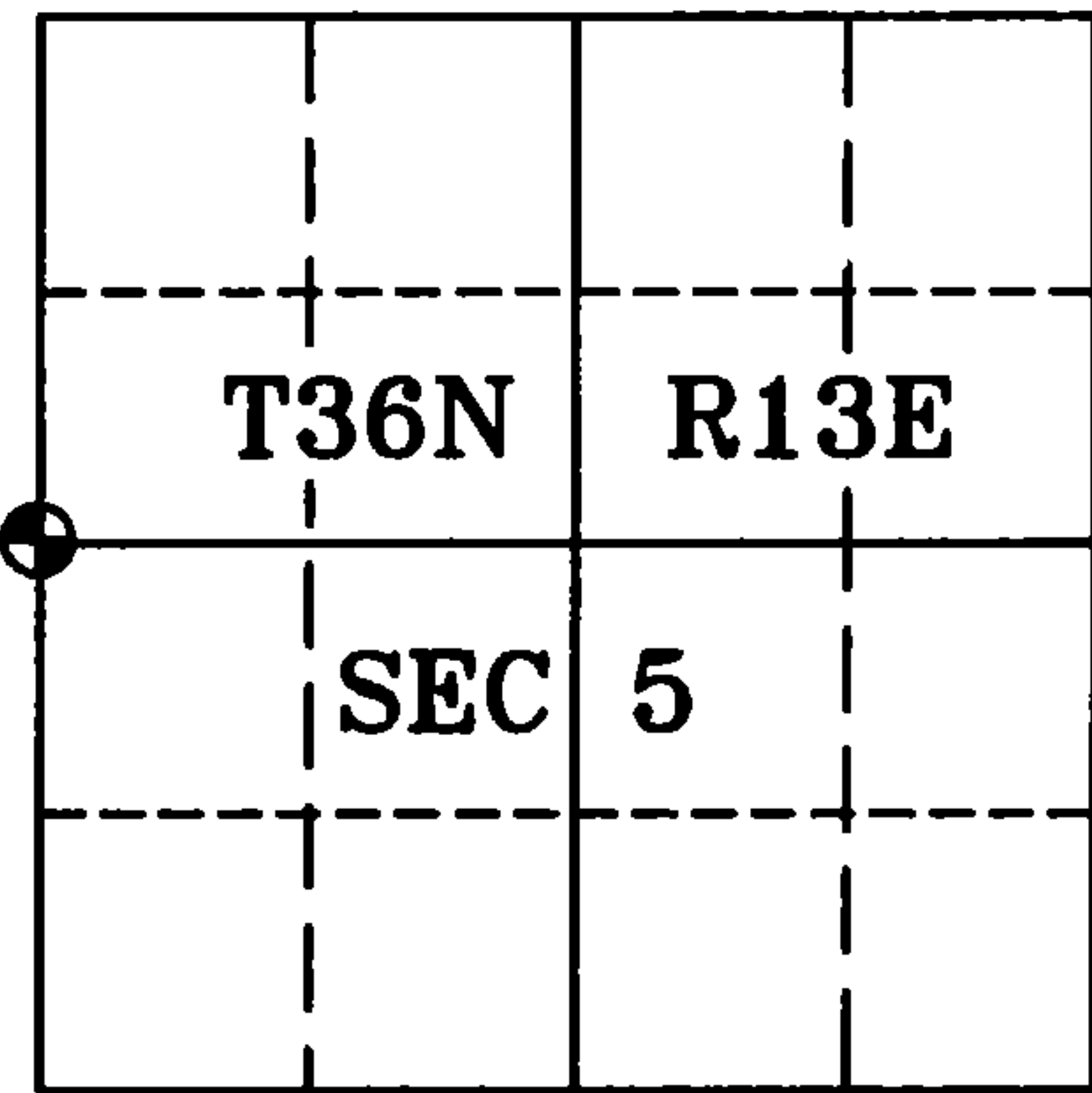
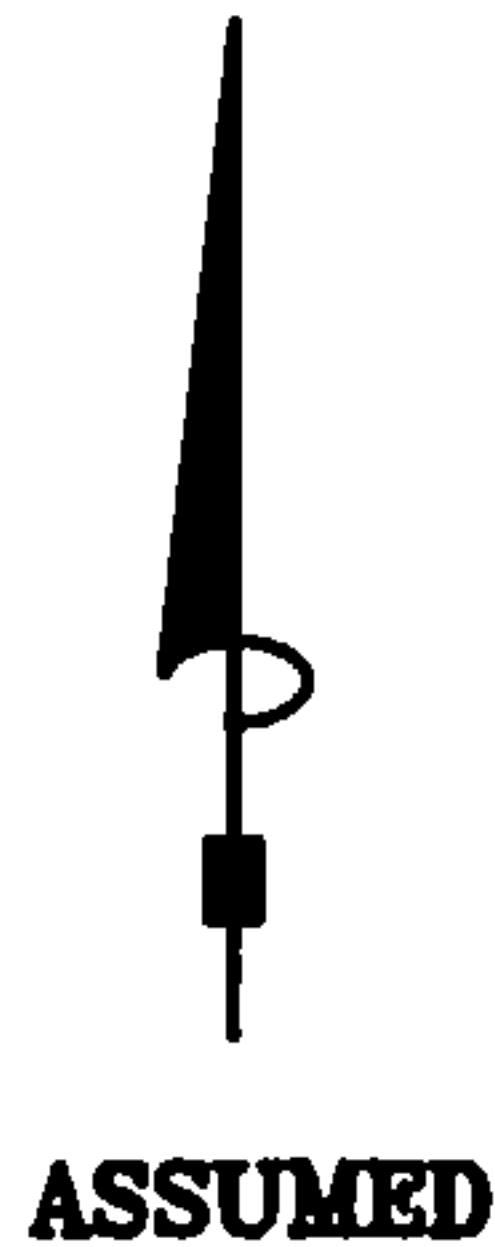
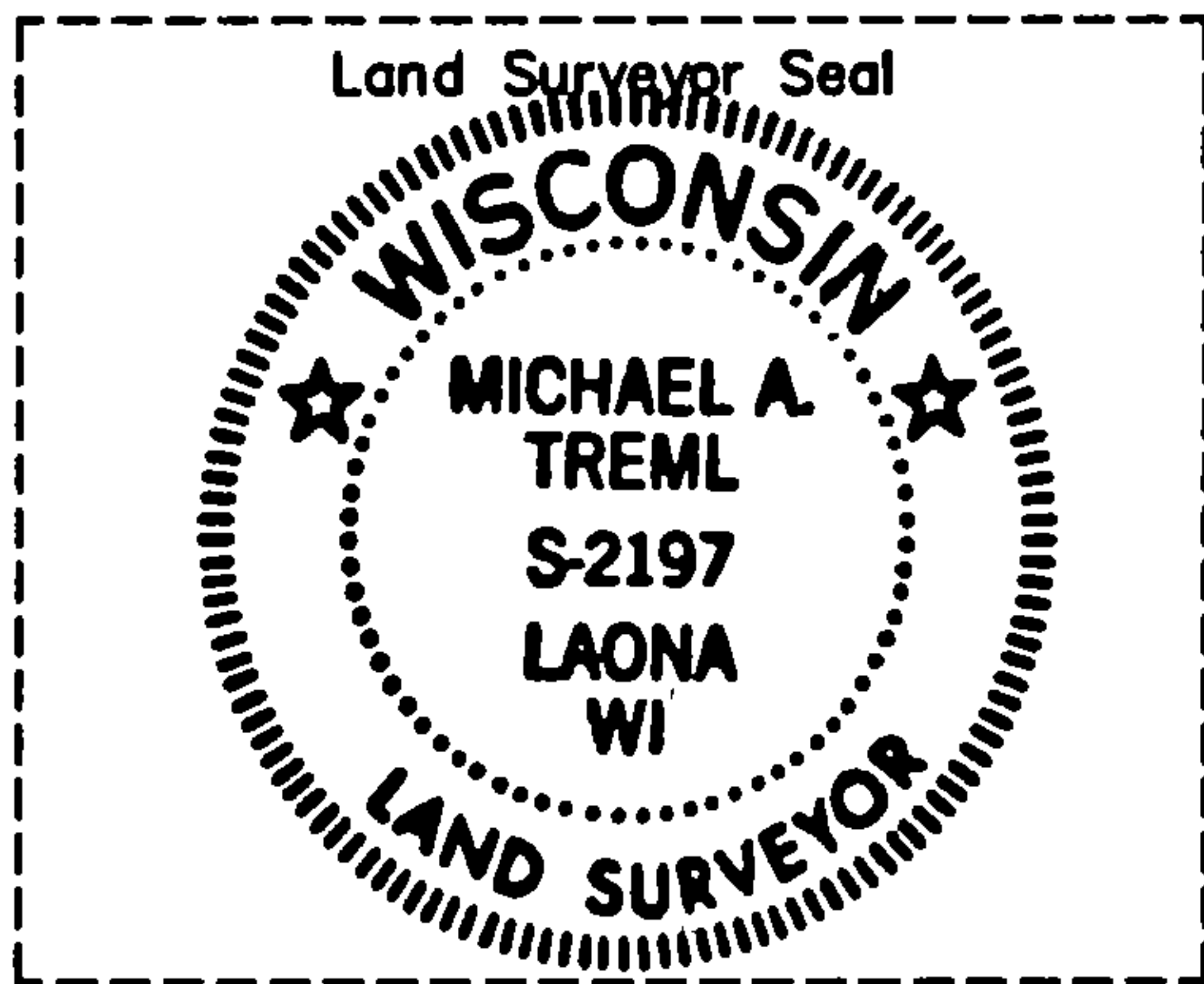
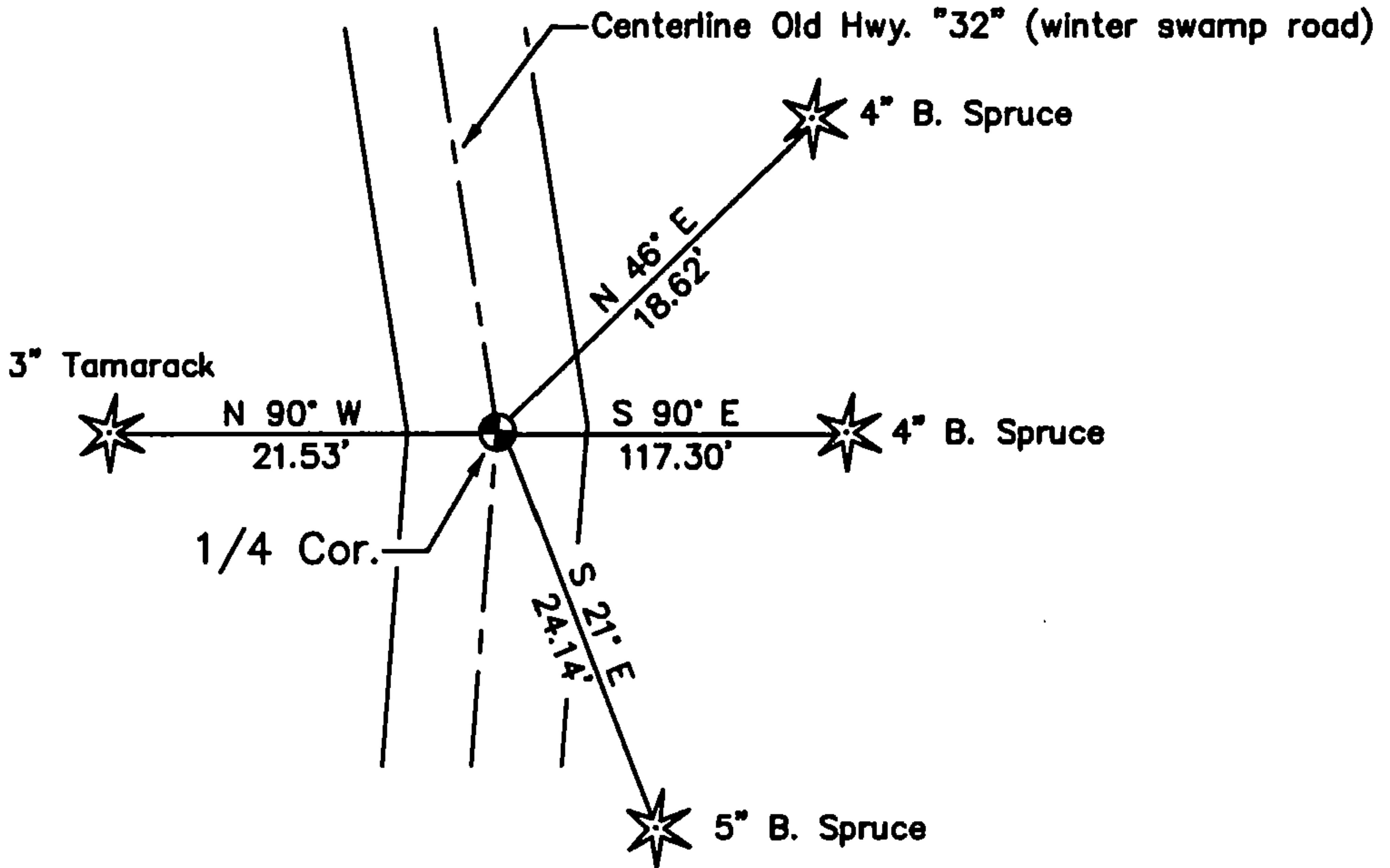
- Restored through acceptance of an obliterated evidence location.
- Restored through acceptance of a found perpetuated location.
- Considered a lost corner and reestablished through lost corner proportionate methods (include a plan view drawing showing distances and directions to other Public Land Survey Corners used for proportioning and determining the corner location).
- Restored or reestablished in a location that differs from a previous restoration or reestablishment (include a plan view drawing and indicate what was set and/or found).

Describe the monument and accessories used to perpetuate the location of this corner (include a plan view drawing and indicate what was set and/or found).

**LEGEND:**

 Forest County Aluminum Monument

Note: All distances are taken to nail in side of tree.



I, Michael A. Tremel, RLS  
(type or print name) certify that the corner location shown on this record was determined by me or under my direction and control and that this U.S. Public Land Survey Monument Record is correct and complete to the best of my knowledge and belief.

Michael A. Tremel 6/11/02  
Signature Date

The West Quarter corner of  
Section 5 T. 36 N., R. 13 E.  
Forest County, WI

Index No. C-5