

CERTIFIED LAND CORNER RESTORATION

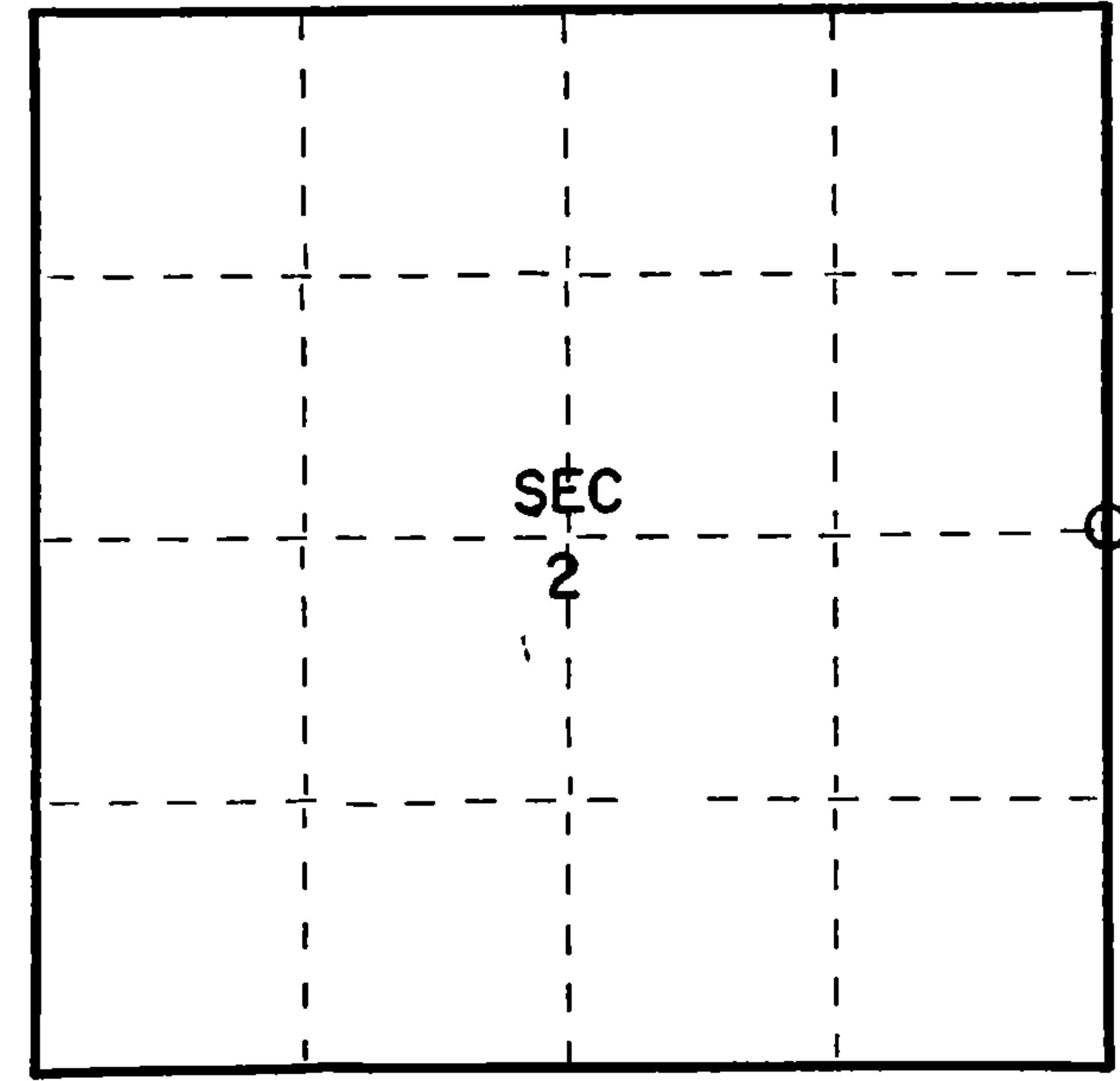
Index No. **C-21**

State of Wisconsin }
County of Forest } ss.

I Thomas R. Arnott, do hereby certify that on the 17th day of October, 1975, I found evidence of the 1/4 corner of sections 1 & 2 Township 36, North, Range 13 E, Fourth Principal Meridian, as described hereon; and that from this evidence I established a new monument and accessories as described hereon to perpetuate the original location of this corner.

Resident witnesses:

Herbert Wagoner
.....
.....



○ = Corner monument restored.

History of original corner establishment:

Original subdivision by James L. Nowlin June 2 - June 12th 1865

Hemlock 12 N10W 15 Lks.
Hemlock 20 N17E 22 Lks.

Description of corner evidence found:

2" iron pipe 5' long with brass cap set by C.E. Walker in 1938

Description of monument and accessories I established to perpetuate the original location of this corner.

Left monument set by Walker

Ties:

Balsam 8" S20W 96.30 feet
Nothing else in area to tie to



Dated at Crandon, Wis., this 23rd day of October, 1975.

Signature Thomas R. Arnott Title Land Surveyor Registration No. S-887
(County Surveyor, Registered Land Surveyor, or other duly authorized official)

Office of Register of Deeds, County of Forest, I hereby certify that the within instrument was filed in this office for record on the 27th day of October, 1975 at 8:30 o'clock A. M.

Eugene Staszny
(Register of Deeds)

Document Number **108048**

By..... Deputy

FORM 985 H. C. MILLER CO., MILWAUKEE

H3613022000

227123

JAN 22 2018

Time: 11:45 A.M.
Vol.: Corner Restoration
Page Number: C-21

U.S. PUBLIC LAND SURVEY MONUMENT RECORD

(Prepared and as required by S. A-E 7.08 WI Administrative Code)

The EAST 1/4 corner of Section 2, T. 36 N., R. 13 E., Forest County, WI
Corner was (check all that apply)

- Restored through acceptance of an obliterated evidence location.
- Restored through acceptance of a found perpetuated location.
- Determined to be lost and re-established through proportionate methods.
(show bearings and distances to PLSS corners used for proportioning.)
- Restored/recovered/re-established in a location that differs from a previously established position. (Show difference in plan view below.)
- Check here if additional information is shown on the reverse side of this form.

Describe record evidence, recovered physical evidence, occupational evidence, testimonial evidence, and all other evidence considered in the recovery/restoration of the corner.

1865 - J.L. Nowlin set original 1/4 section post; Hemlock 12", N10°W, 15 links
Hemlock 20", N17°E, 22 links.

1938 - C.E. Walker set 2" x 5' long iron pipe with brass cap.

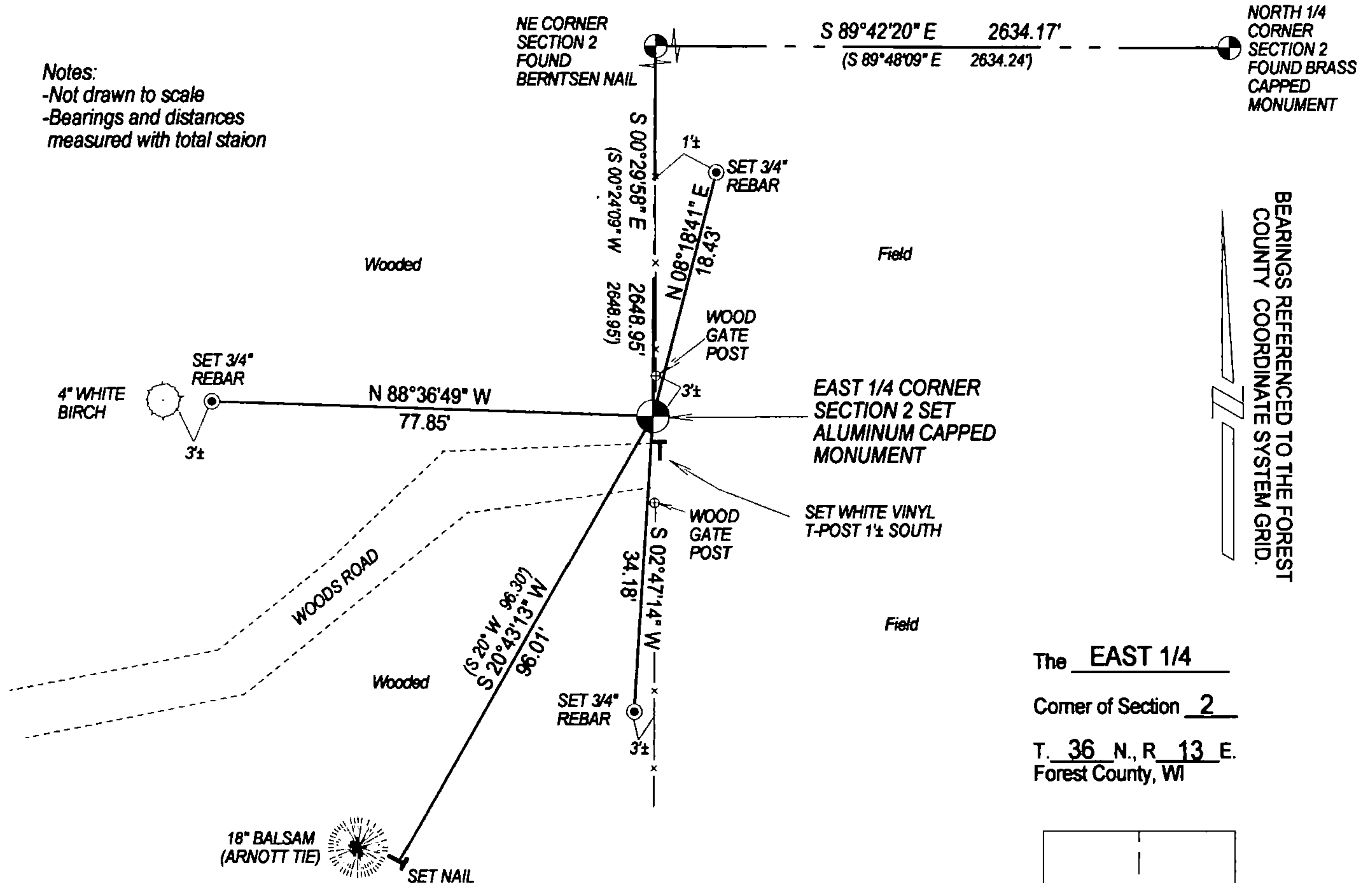
1975 - T. Arnott found monument set by Walker, references a new tie; Balsam 8", S20°W, 96.30 feet, and filed a tie sheet.

2019 - I found the bottom portion of the 2" monument set by Walker lying prone. I found the existing tie referenced by Arnott in 1975 in good condition. Using Arnott's tie, and bearings and distances referenced in Certified Survey Map Volume 4 Page 35 located in Section 1, I set an Aluminum Capped Forest County Monument at the Corner location.

Physical description of the monument set:

I set a 2.375" x 30" aluminum capped monument 2" above surface as the corner, and tied it out as follows.

Describe the accessories used to perpetuate the location of the corner. Include a plan view drawing and indicate accessories found/set. Describe measuring point on bearing trees. Show any topographic features that would aid in future recovery of the corner.

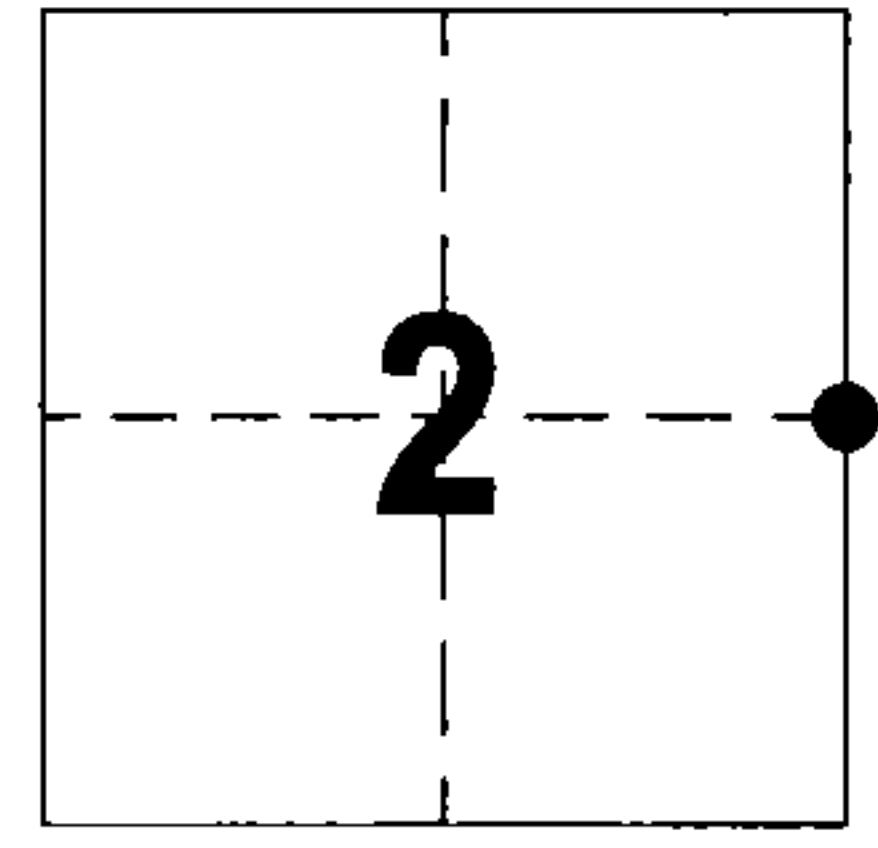


Notes:
-Not drawn to scale
-Bearings and distances measured with total station

BEARINGS REFERENCED TO THE FOREST COUNTY COORDINATE SYSTEM GRID.

The EAST 1/4
Corner of Section 2
T. 36 N., R. 13 E.
Forest County, WI

SURVEYORS SEAL



● = Location of corner

I, Timothy J. Rusch, certify that the corner location shown on this record was determined by me or under my direction and control and that this U.S. Public Land Survey Monument Record is correct and complete to the best of my knowledge and belief.

Timothy J. Rusch Signature
01-14-2019 Date

INDEX No.

C-21

43613022000