

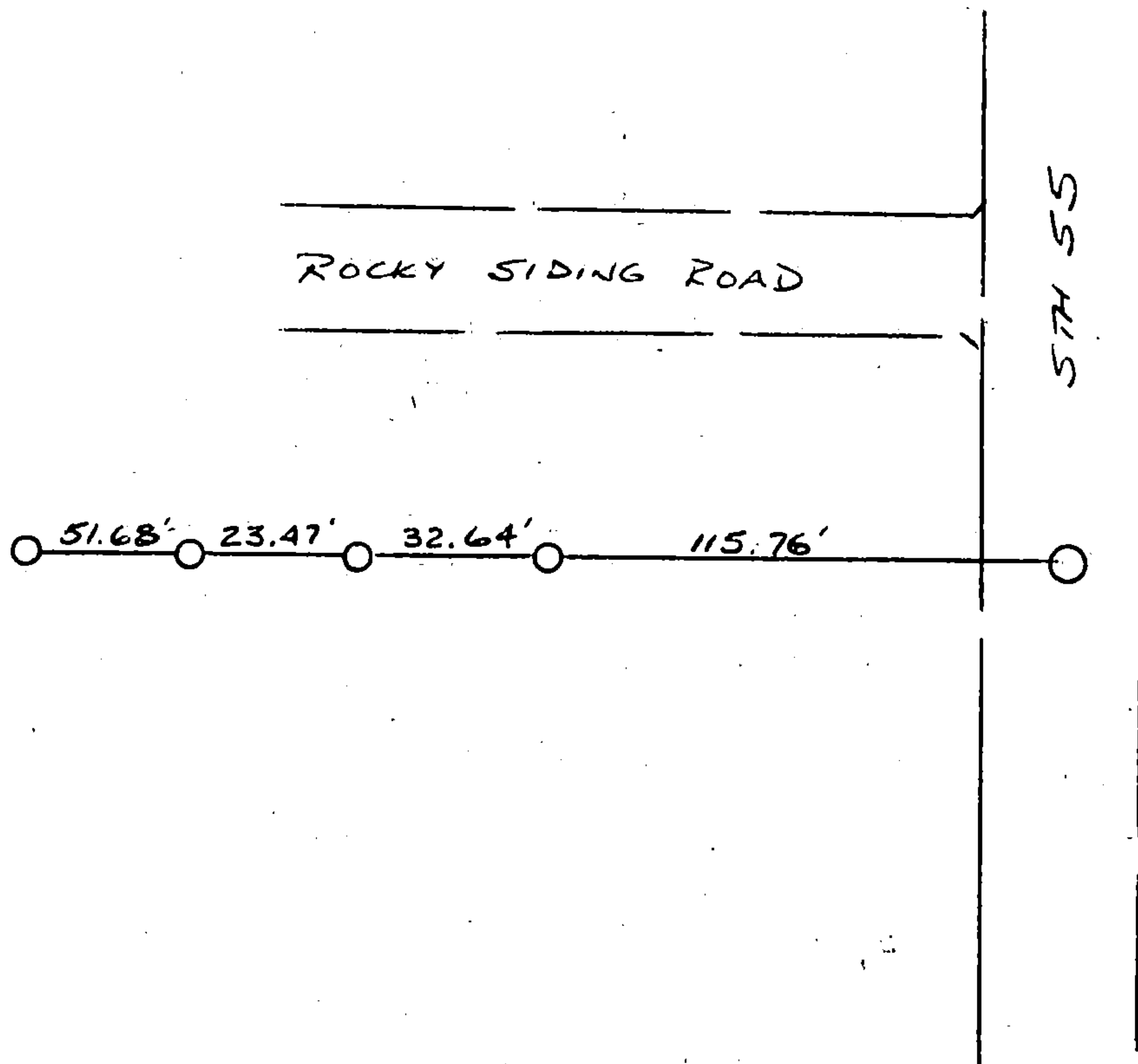
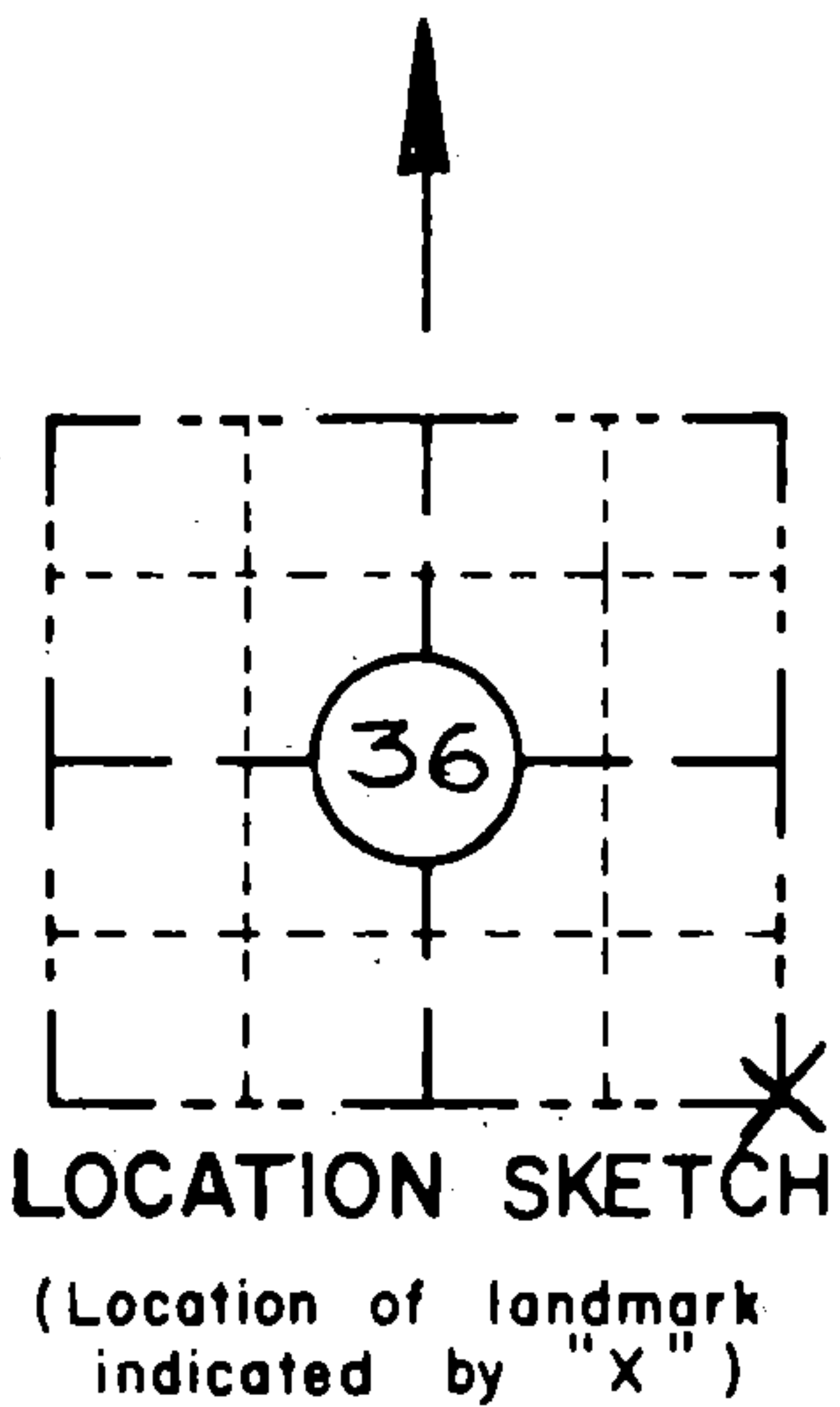
**ORIGINAL ON FILE IN CO CLERK'S OFFICE
COPY HERE FOR REFERENCE**

**RECORD AND CERTIFICATION OF U.S.
PUBLIC LAND SURVEY CONTROL STATION**
E-D-716-72

State of Wisconsin / Department of Transportation

District 7	Project I. D. 9155-02-10	Located by R. JOHNSON SURVEY CREW CHIEF			
Corner S.E.	36 SECTION	Township 36 N	Range (E,W) 12 E	County FOREST	
Wisconsin Coordinates CORNER	East (X) 2,275,980.67	North (Y) 627,915.66	Elevation (Z)	Zone CENT.	
Control Station Name	East (X)	North (Y)	Elevation (Z)	Zone	
Horizontal — NORTH AMERICAN, 1927		CONTROL DATUM Vertical — MEAN SEA LEVEL, 1929 ADJUSTMENT			
Horizontal — _____ Order		SURVEY CONTROL		Vertical — _____ Order	

SKETCH



I hereby certify that on the 27th day of FEBRUARY 1992, that I did locate the above corner which was evidenced by R.R. SPIKE (COCHRANE)

; I further certify that to perpetuate the location of such corner I did, at the exact location thereof, place a permanent marker consisting of _____

_____ ; I further certify that I did establish 4 references or witness monuments consisting of 5/8" x 24" REINFORCING BAR WITH RED PLASTIC W/DOT CAP

located as shown above:

SEAL

Signature Registered Land Surveyor	Registration No. S--	Title
------------------------------------	-------------------------	-------

CORNER
S.E.
SECTION
36
TOWN
T36N
RANGE
R12E

4361236 0000

2-25

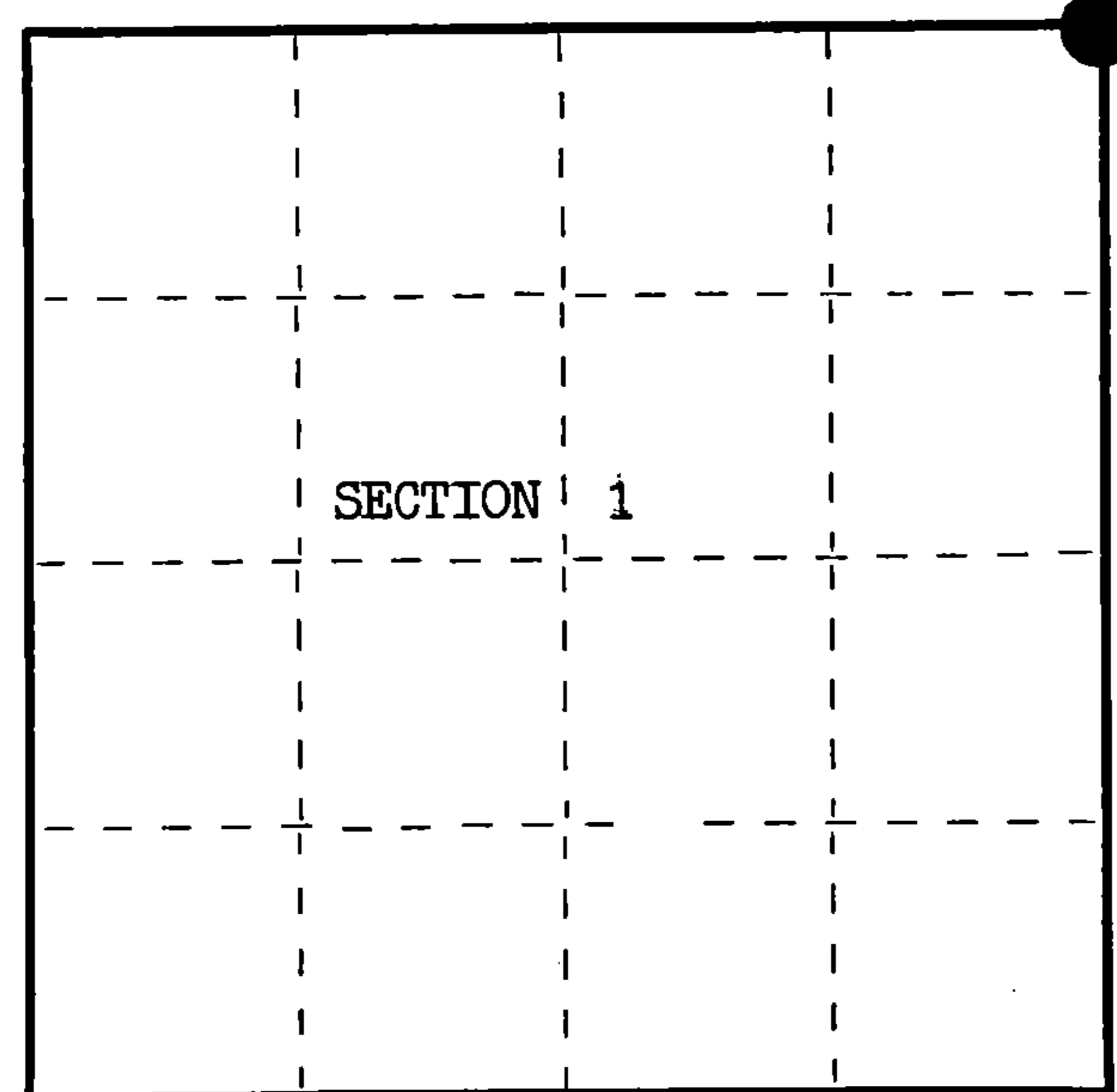
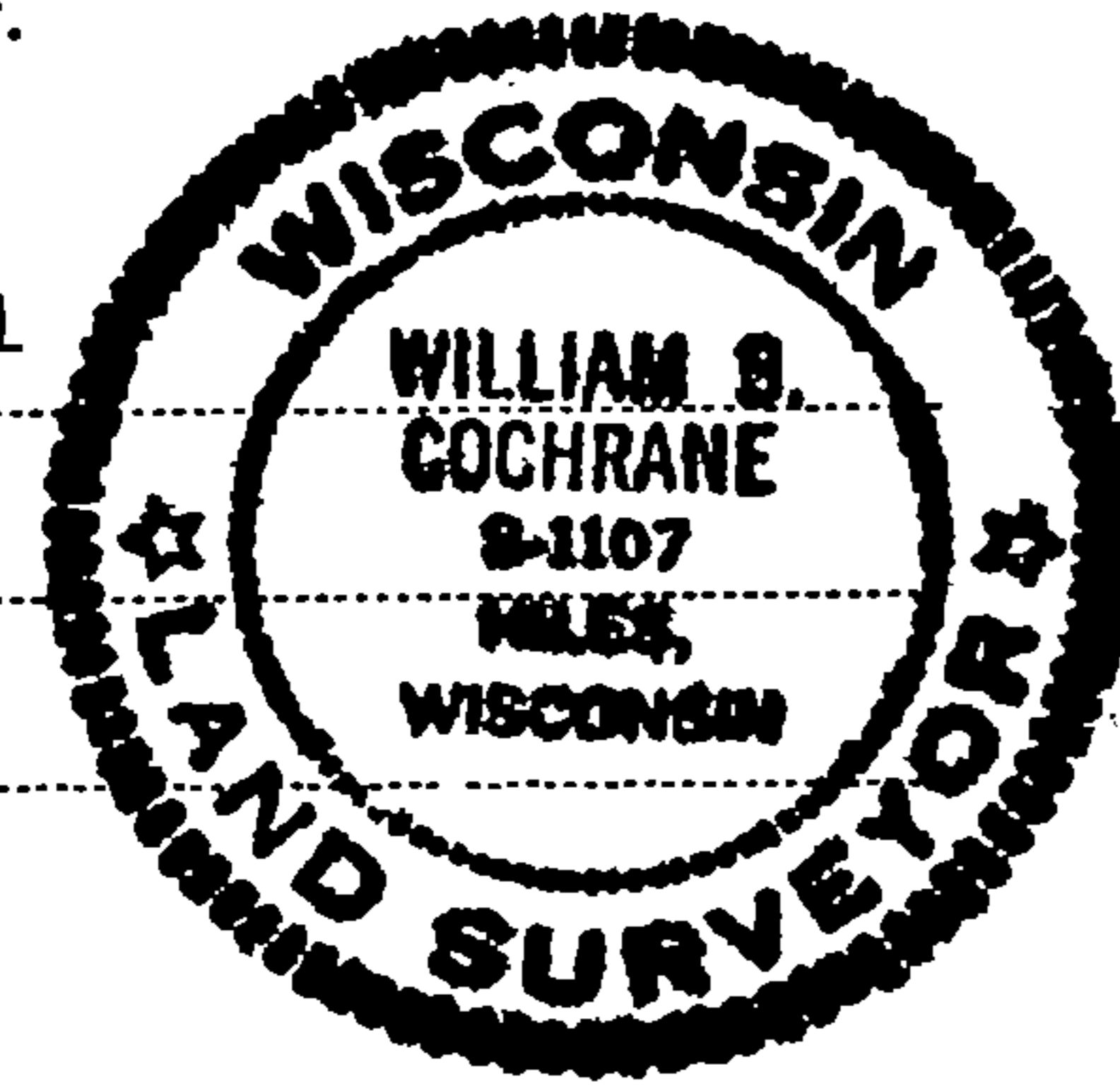
CERTIFIED LAND CORNER RESTORATION

Index No. **A 25**
A-25

State of Wisconsin }
County of Forest } ss.

I William B. Cochrane, do hereby certify that on the 23 rd day of October, 1981, I found evidence of the Northeast Section corner of Section 1 Township 35, North, Range 12, Fourth Principal Meridian, as described hereon; and that from this evidence I established a new monument and accessories as described hereon to perpetuate the original location of this corner.

Resident witnesses:
David Brownell



○ = Corner monument restored.

History of original corner establishment:
Original survey in 1858 by Artemas Curtiss

North between sections 1 and 6, Ranges 12 and 13 East.
75.10 chains, set post for corner to sections 1, 6, 31 and 36, Townships 35 and 36 North, Ranges 12 and 13 East.
Tamarac 6 S54°E 27 links 0.10 chains North stream 10 links wide runs East
White Pine 12 N38°W 30 links 0.05 chains West stream 15 links wide runs East North East

Description of corner evidence found:
Noevidence of the original corner or subsequent corner evidence was found.
Corner position falls in State highway 55.

I set the corner position at proportionate distance using the restored quarter corner to the North and the restored quarter corner to the South for control in distance. The center line of State highway 55 was used for controlling the departure of the corner position.

Description of monument and accessories I established to perpetuate the original location of this corner.
Corner position is marked by a railroad spike in the center of State highway 55 and over a culvert crossing the highway East and West.
Set a 2½" diameter Berntsen aluminum pipe monument 3 feet long for reference corner. From set reference monument corner bears S37°E, 53.14 feet.
Quarter corner between sections 31 and 36 Township 36 North Ranges 12 and 13 East bears North 00°21'19" West, 2636.24 feet.
Quarter corner between sections 1 and 6 Township 35 North Ranges 12 and 13 East bears South 00°14'23" East, 2306.71 feet.
Bearings are referenced to solar observations.

Dated at Hiles, Wis., this 11 th day of January, 19 82.

Signature William B. Cochrane Title Land Surveyor Registration No. S-1107
(County Surveyor, Registered Land Surveyor, or other duly authorized official)

Office of Register of Deeds, County of Forest, I hereby certify that the within instrument was filed in this office for record on the 5 th day of March, 19 82 at 9:30 o'clock A. M.

Eugene Staszny
(Register of Deeds)

By _____ Deputy

DOCUMENT NO. **121242**

FORM 985 H. C. MILLER CO., MILWAUKEE

43612360000