

CERTIFIED LAND CORNER RESTORATION

Index No. Z-15

State of Wisconsin }  
County of Forest } ss.

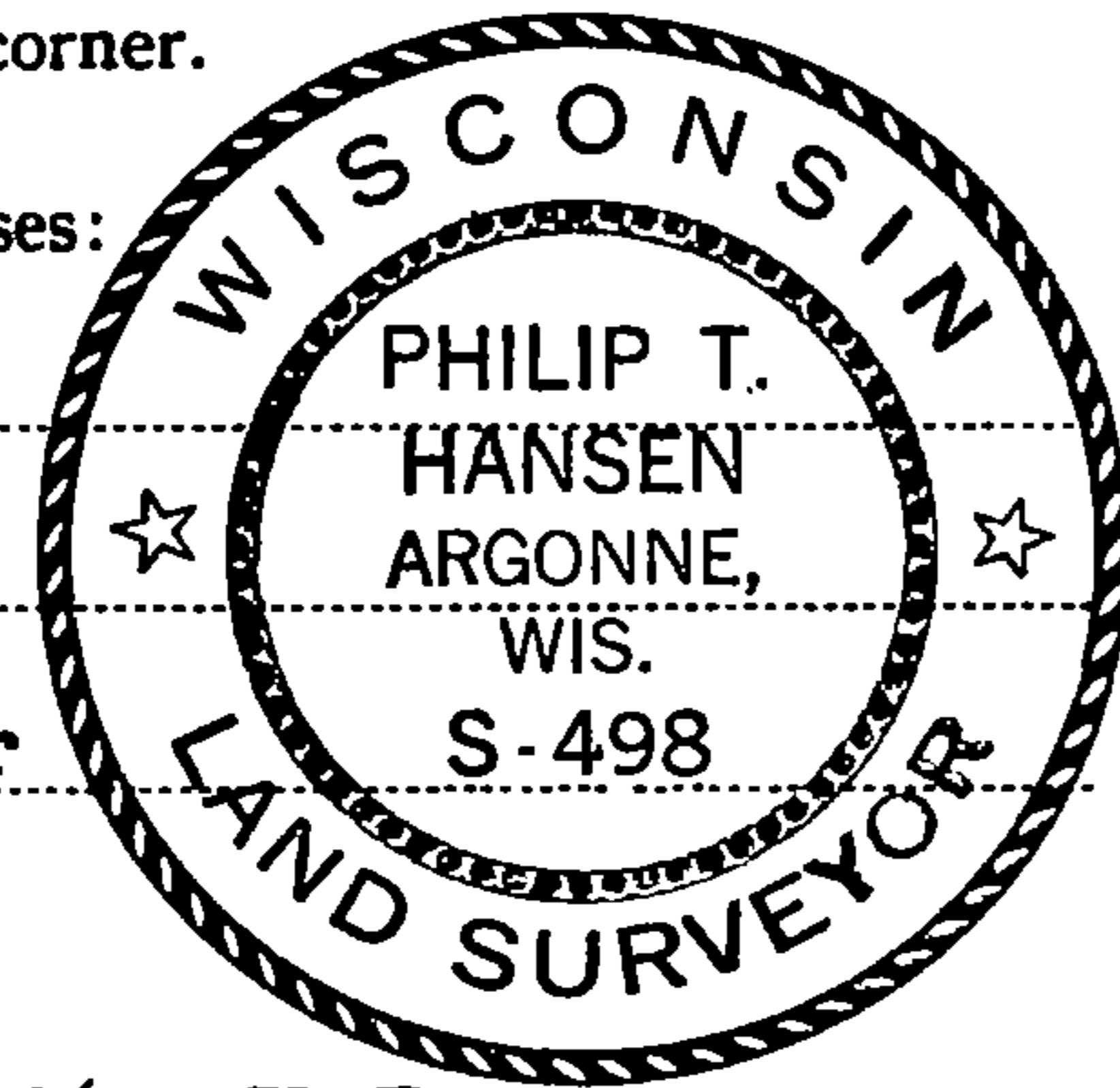
I Philip T. Hansen, do hereby certify that on the 14th day of May, 1976, I found evidence of the Quarter corner of Sec. 3 & 34 Township 35 and 36, North, Range 12 East, Fourth Principal Meridian, as described hereon; and that from this evidence I established a new monument and accessories as described hereon to perpetuate the original location of this corner.

Resident witnesses:

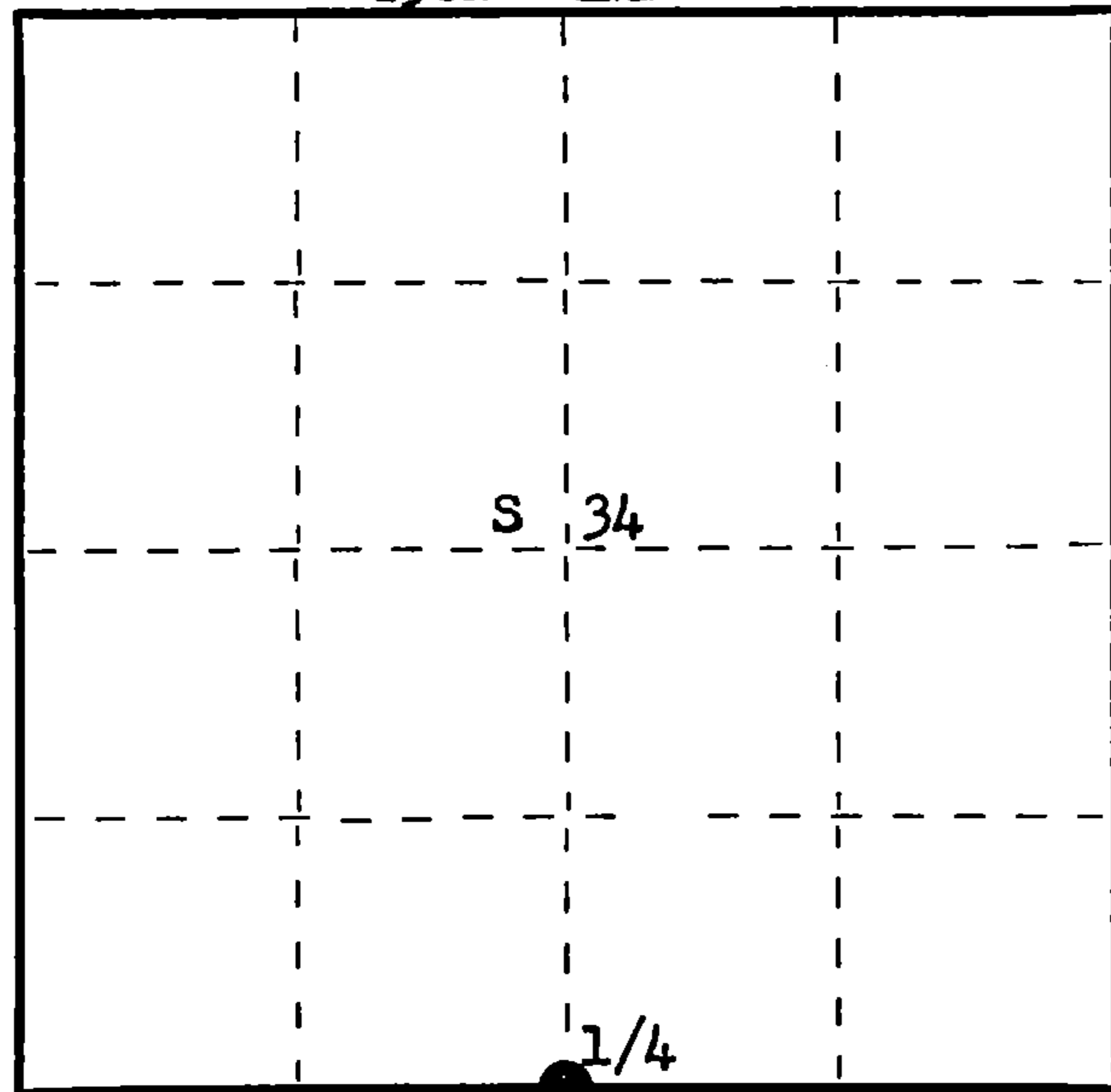
Glen Barker

Jim Claflin

Herb Wagoner



T36N R12E



○ = Corner monument restored.

History of original corner establishment:

Original corner established by J.L. Jolwin, Deputy Surveyor, in 1860, from which Sugar 10" bears N20°E 10 lks, and Y.Birch 20" bears S50°W 45 lks. No record of any subsequent surveys or recoveries.

Description of corner evidence found:

Corner alignment - East-West (Sipple Road) intersects with Westimeyer Road South. Found an old stone fence, parallel with Sipple Road, then turns North. The corner of rock fence is in North South alignment with centerline of Westimeyer Road.

Description of monument and accessories I established to perpetuate the original location of this corner.

Set a 1 1/2" x 18" iron pipe 4" below surface at intersection of Sipple Road and the Westimeyer Road.

Set a 2 1/2" Berntsen A-1 Federal Monument for witness monument 50 lks South.

Projects 1 ft. above ground - Cap stamped.

NBTs - Sugar 6" N63°W 101 lks., scribed 1/4 BT.

Sugar 6" N25°W 85.2 lks., scribed 1/4 BT.

Measurements and bearings to true corner.

Pipe and BTs painted blue.

S498  
T36N R12E  
1/4 S 34 W.C.  
T35N R12E  
N 50 lks. to corner.

Dated at Rhineland, Wis., this 21st day of June, 1976

Signature Philip T. Hansen Title Registered Land Surveyor Registration No. S-498  
(County Surveyor, Registered Land Surveyor, or other duly authorized official)

Office of Register of Deeds, County of Forest, I hereby certify that the within instrument was filed in this office for record on the 22nd day of June, 1976 at 3:45 o'clock P. M.

Eugene Staszny (Register of Deeds) DOCUMENT NUMBER 109499

By \_\_\_\_\_ Deputy

FORM 985

43612340020

Document Number

198705

REGISTER'S OFFICE  
Forest County, Wis.  
Received for record this 30<sup>th</sup> day  
of September A.D., 2008 at  
9:06 clock A.M. and recorded  
in Vol. Corner Restoration  
page Z-15

*Kay Swanson, Deputy*  
Register of Deeds

# U.S. PUBLIC LAND SURVEY MONUMENT RECORD

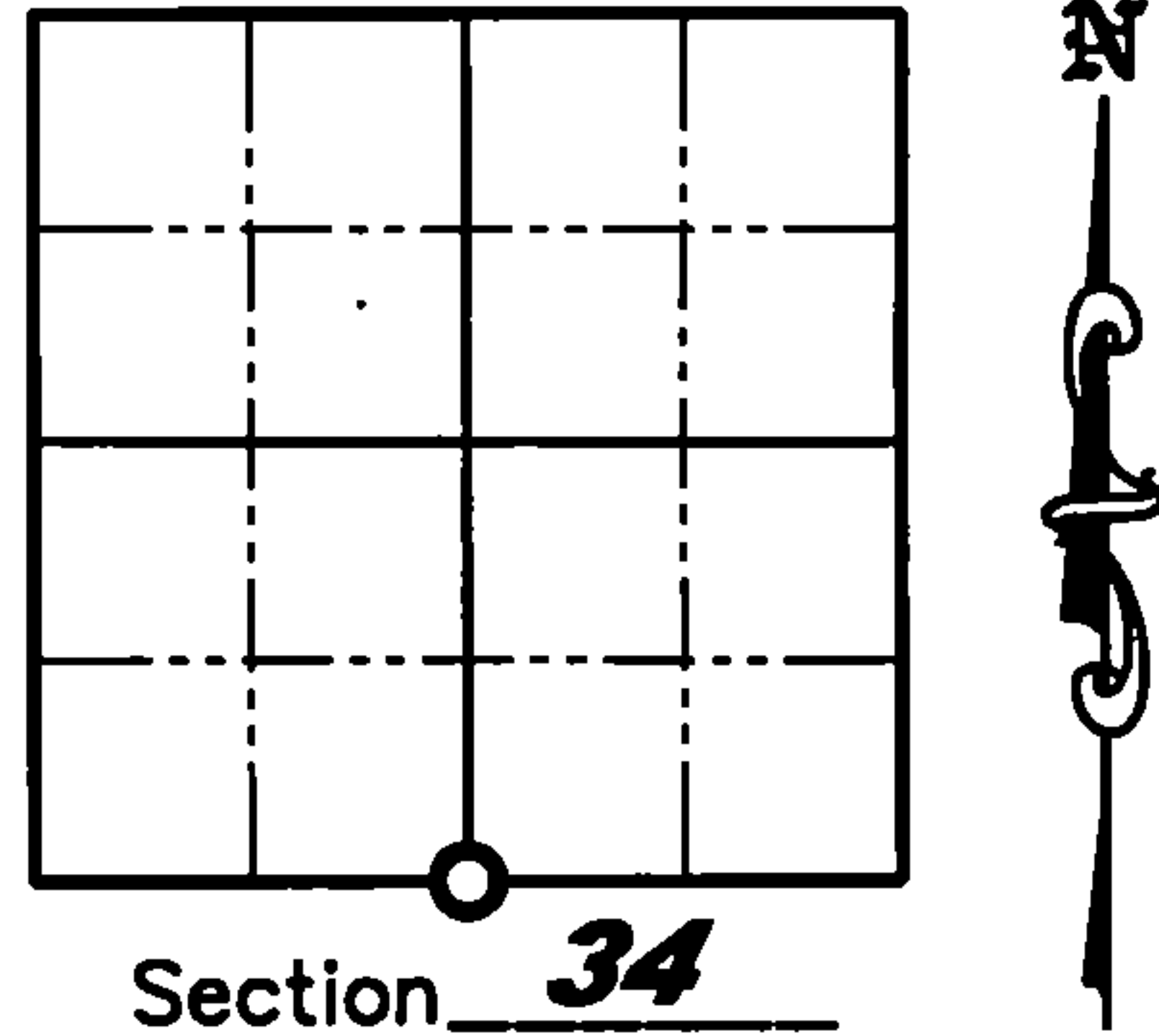
NOTE: This form is intended and designed to fulfill all requirements of Wisconsin Administrative Code, Chapter A-E 7.08 U.S. Public Land Survey Monument Record (3)(a)(b)(c)(d)(e)(f)(g)(h)(i). An additional sheet may be added if necessary to conform with said requirements.

(a) Corner location: Township 36 North

Range 12 East

Town of Crandon

County of Forest



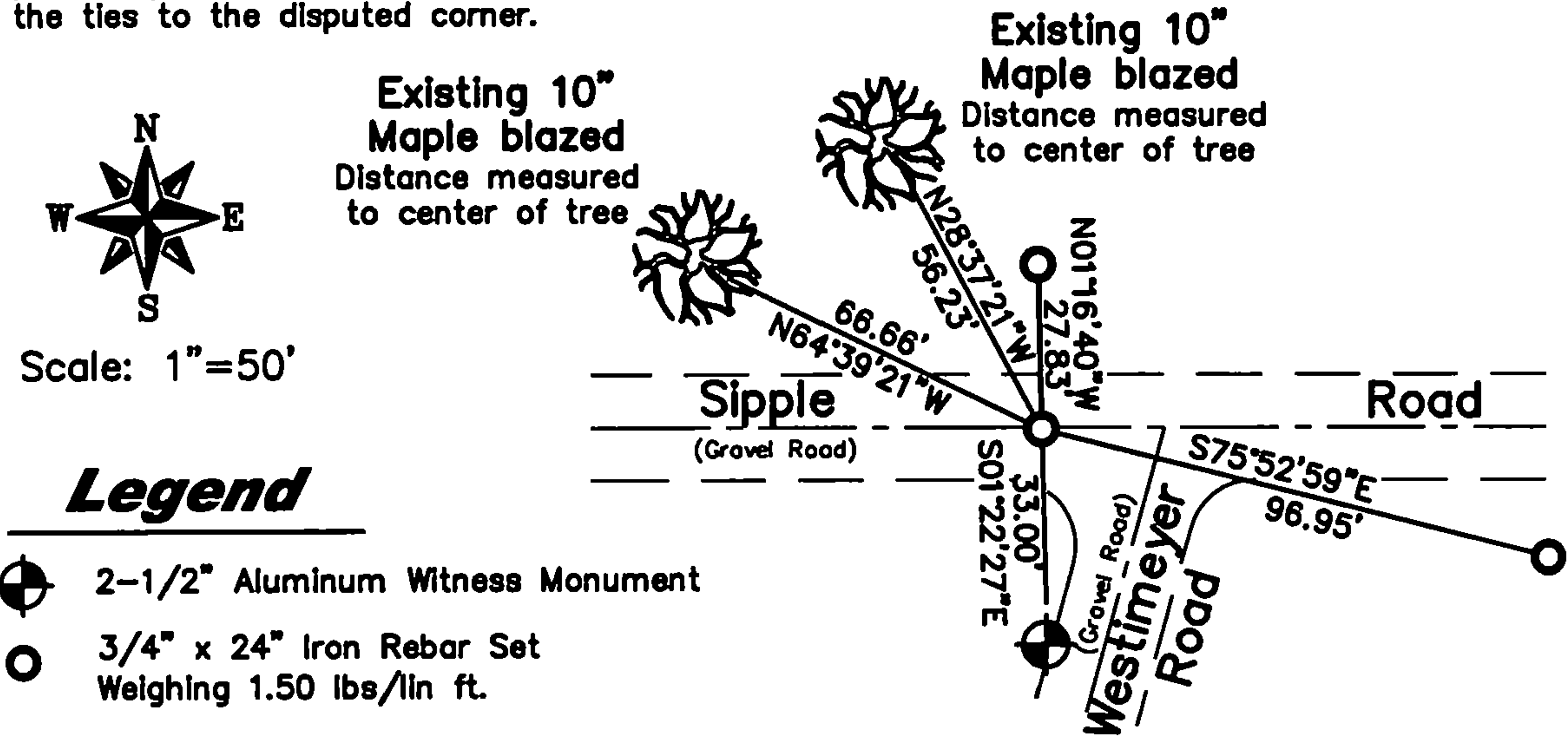
(b)(f)(g)(h) Description of monument found at this corner and if it was accepted, state all evidence (material, testimonial, occupation, plats, records, other monuments) used as a basis for accepting. If not accepted or if nothing was found, state evidence used as a basis for establishing location. If reestablished through lost corner proportionate methods, indicate all monuments, distances and directions used to establish. Indicate type of monument found or set and sign post.

1860 - J.L. Nowlin established original 1/4 corner post; BTs: 10" Sugar, N20°E, 10 links.; 20" Yellow Birch, S50°W, 45 links.

May 14, 1976 - Philip T. Hansen found no record of any subsequent surveys or recoveries. The corner alignment - East-West (Sipple Road) intersects with Westimeyer Road South. He found an old stone fence, parallel with Sipple Road, then turns North. The corner of rock fence is in North-South alignment with centerline of Westimeyer Road. He set a 1-1/2" by 18" iron pipe 4" below surface at intersection of Sipple Road and the Westimeyer Road. He also set a 2-1/2" Berntsen Aluminum Witness Monument 50 lks. (33.00 ft) South and two Bearing trees as notes: 6" Sugar, N63°W, 101 lks. (66.66 ft); 6" Sugar, N25°W, 85.2 lks. (56.23).

June 14, 2006 - Jonathan W. Dulin visited corner and found a 2-1/2" aluminum witness monument and two Maple bearing trees established by Phillip Hansen in 1976. We looked for the monument in the road, but it was missing. We set a 3/4" by 24" iron rebar, 4" below the road surface, using the existing bearing trees and witness corner. We set new witness corners as shown below.

(c)(d)(e) Plan view of corner with ties to at least 4 witness monuments. If in disagreement with previously established corner, show the distances between the two corners and also indicate the ties to the disputed corner.



(i) I, Jonathan W. Dulin, certify that the corner location on this record was determined by me under my direction and control and that this U.S. Public Land Survey Monument is correct and complete to the best of my knowledge and belief.

*Jonathan W. Dulin*  
Signature  
Date 9/29/2008  
WISCONSIN  
JONATHAN W. DULIN  
S-2754  
RHINELANDER  
WISCONSIN  
LAND SURVEYOR

Index No. Z-15

436 1234 0020