

Document Number

198704

## U.S. PUBLIC LAND SURVEY MONUMENT RECORD

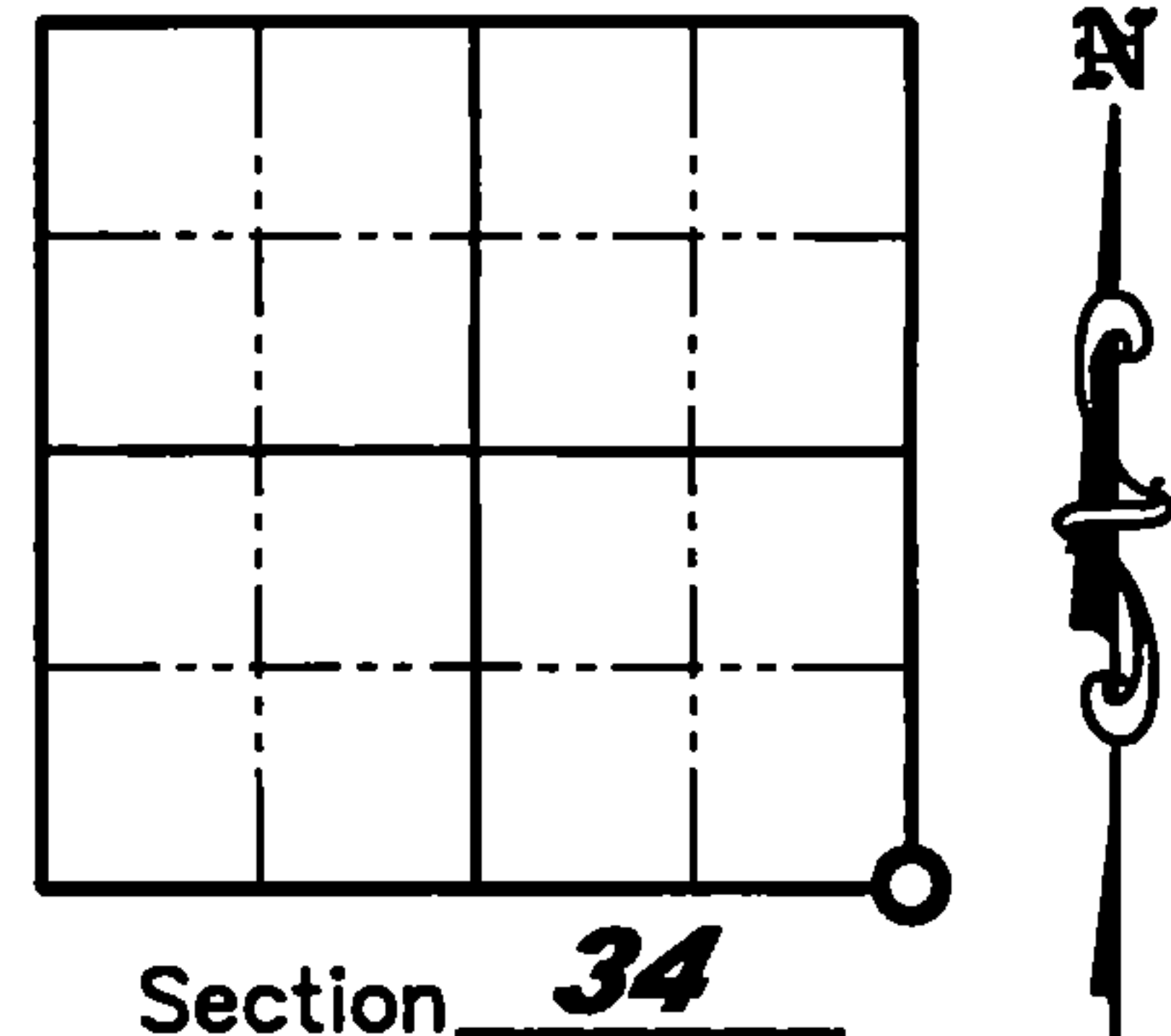
NOTE: This form is intended and designed to fulfill all requirements of Wisconsin Administrative Code, Chapter A-E 7.08 U.S. Public Land Survey Monument Record (3)(a)(b)(c)(d)(e)(f)(g)(h)(i). An additional sheet may be added if necessary to conform with said requirements.

(a) Corner location: Township 36 North

Range 12 East

Town of Crandon

County of Forest



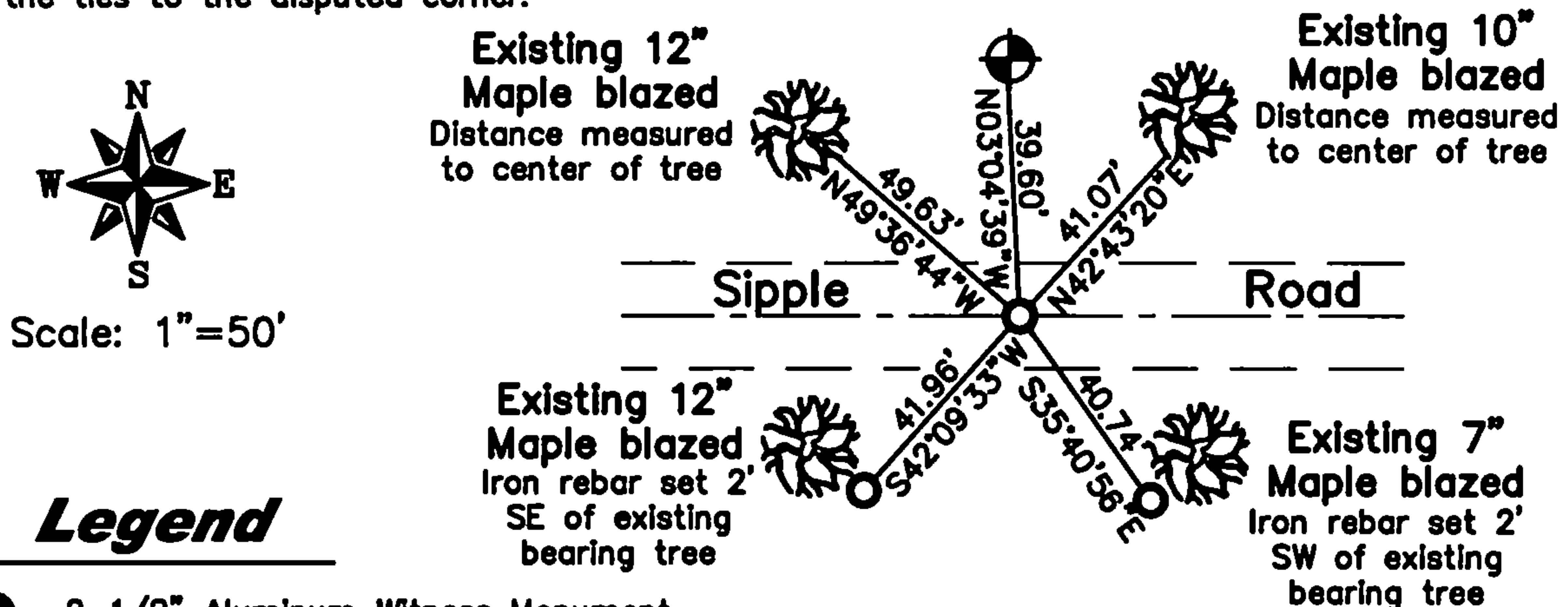
(b)(f)(g)(h) Description of monument found at this corner and if it was accepted, state all evidence (material, testimonial, occupation, plats, records, other monuments) used as a basis for accepting. If not accepted or if nothing was found, state evidence used as a basis for establishing location. If reestablished through lost corner proportionate methods, indicate all monuments, distances and directions used to establish. Indicate type of monument found or set and sign post.

1858 - A. Millard established original corner post; BTs: 20" Lynn, N55°E, 23 lks.; 12" Sugar, N40°W, 21 lks.; 10" Yellow Birch, N55°W, 39 lks.; 12" Sugar, S45°E, 4 lks.

July 28, 1977 - Philip T. Hansen established corner from re-established Section Corner 33, 34, and 4 and 1/4 Corner between Section 34 and 3. He ran traverse between above corners to compute distance 2636.137 ft. at bearing N88°59'E. He continued traverse and set Section Corner 2, 3, 34 and 35 at same bearing at 2636.137 ft. No evidence of any old corner recovered after intensive search. He set 1-1/2" by 18" iron pipe 5" below surface of Sipple Road. He also set a 2-1/2" Berntsen Aluminum Witness Monument 60 links (39.60 ft) North and bearing trees as notes: 6" Sugar, S36°E, 64.5 lks. (42.57 ft); 8" Sugar, S44°W, 64.5 lks. (42.57 ft); 7" Sugar, N50°W, 75.2 lks. (49.63 ft); 8" Sugar, N44°E, 62.7 lks. (41.38 ft).

June 14, 2006 - Jonathan W. Dulin visited corner and found a 2-1/2" aluminum witness monument and four Maple bearing trees established by Phillip Hansen in 1977. We looked for the monument in the road, but it was missing. We set a 3/4" by 24" iron rebar, 4" below the road surface, using the existing bearing trees and witness corner. We set new witness corners as shown below.

(c)(d)(e) Plan view of corner with ties to at least 4 witness monuments. If in disagreement with previously established corner, show the distances between the two corners and also indicate the ties to the disputed corner.



### Legend

- 2-1/2" Aluminum Witness Monument
- 3/4" x 24" Iron Rebar Set Weighing 1.50 lbs/lin ft.

(i) I, Jonathan W. Dulin, certify that the corner location on this record was determined by me under my direction and control and that this U.S. Public Land Survey Monument is correct and complete to the best of my knowledge and belief.

Signature [Signature] Date 9/29/2008  
WISCONSIN  
JONATHAN W. DULIN  
S-2754  
RHINELANDER  
WISCONSIN  
LAND SURVEYOR

Index No. Z-17

4361234 0000

CERTIFIED LAND CORNER RESTORATION

Index No. A-17

State of Wisconsin }  
County of Forest } ss.

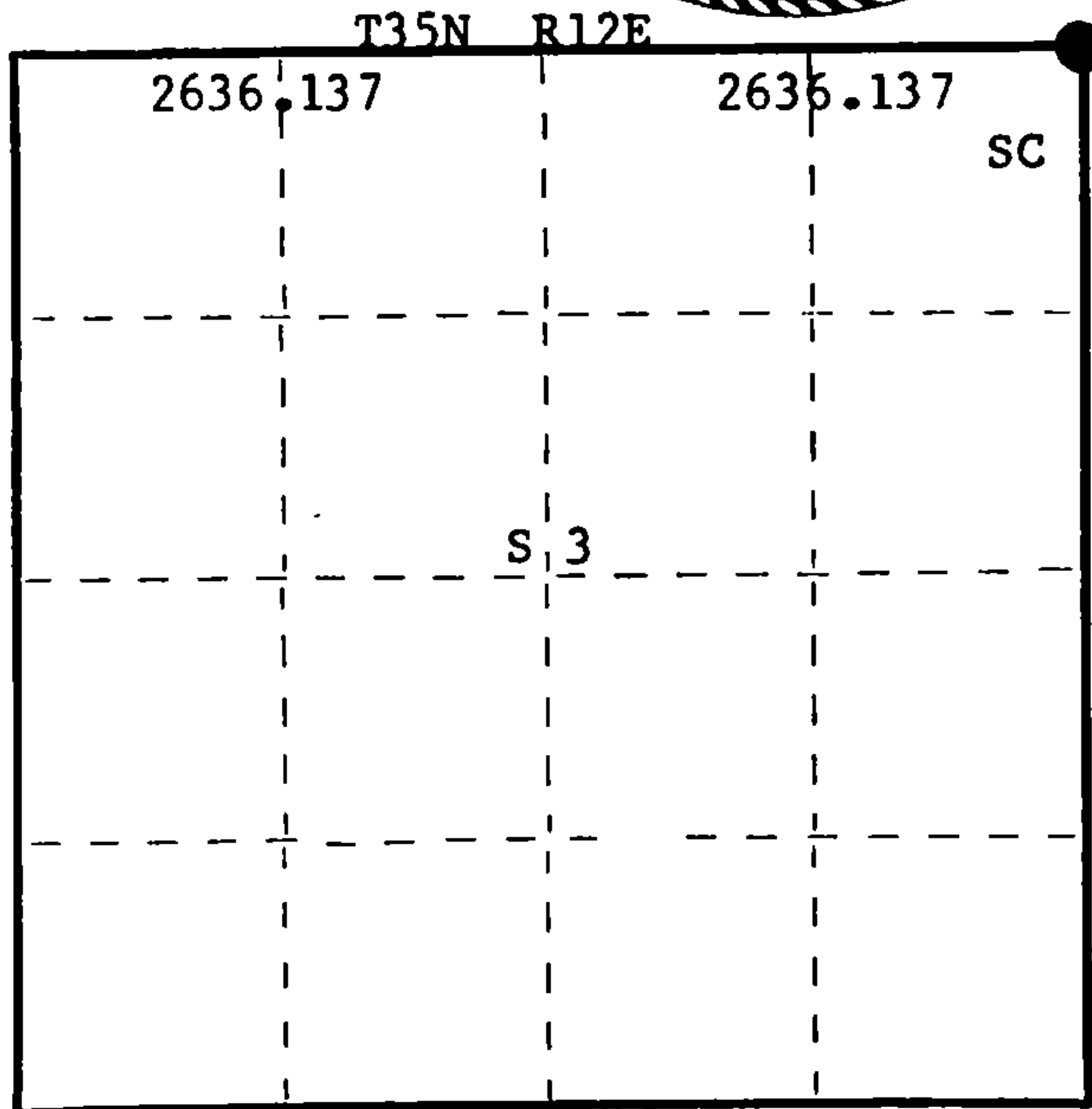
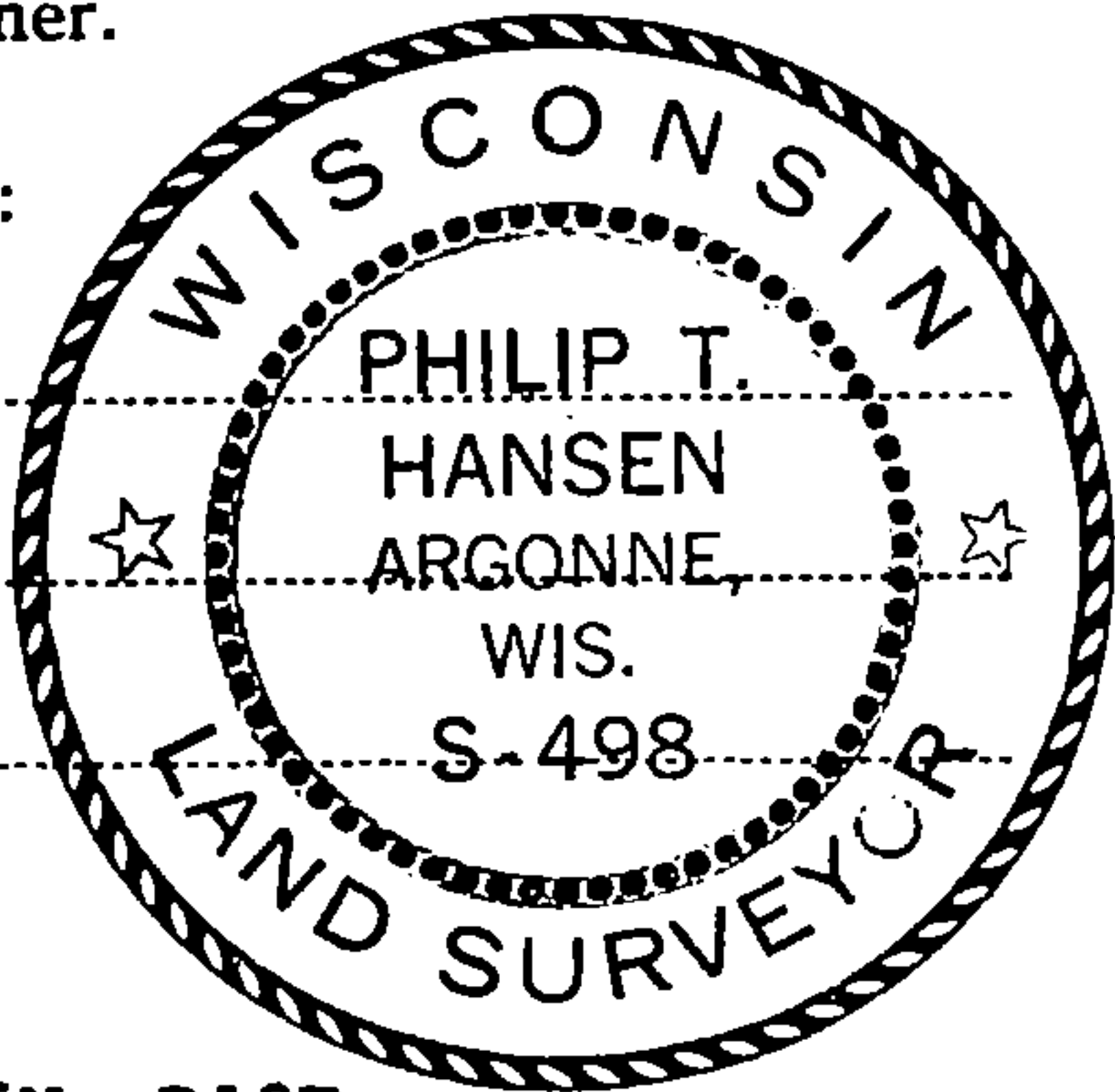
I Philip T. Hansen, do hereby  
certify that on the 28th day  
of July, 1977, I ~~found~~  
~~re-established~~ re-established the Section  
corner of Sec. 34, 35, 3 & 2  
Township 35 - 36, North, Range  
12 East, Fourth Principal Meridian,  
as described hereon; and that from this evidence  
I established a new monument and accessories  
as described hereon to perpetuate the original  
location of this corner.

Resident witnesses:

Glen Barker

Jim Claflin

Herb Wagoner



○ = Corner monument restored.

History of original corner establishment:

Original corner established by A. Millard in 1858 from which Lynn 20" bears N55°E, 23 links; Sugar 12" bears N40°W, 21 links; Yellow Birch 10" bears N55°W, 39 links; Sugar 12" bears S45°E, 4 links.

No records of any subsequent survey.

Description of corner evidence found:

Corner established from re-established section corner 33, 34, & 4 and 1/4 corner between Section 34 and 3. Ran traverse between above corners to compute distance 2636.137 ft. at bearing N 88° 59' E. Continued traverse and set Section Corner 2, 3, 34 and 35 at same bearing at 2636.137 feet. No evidence of any old corner recovered after intensive search.

Description of monument and accessories I established to perpetuate the original location of this corner.

Set 1½" x 18" iron pipe for true corner in centerline of road, 5" below surface of Sipple Road.

Set 2½" Berntsen A-1 Federal Monument, aluminum with magnet installed in cap and base for witness corner, 60 links north. Cap stamped:

Monument projects 2' above ground.

Marked NBTs - Sugar 6" S36°E, 64.5 links, scribed SC BT.

Sugar 8" S44°W, 64.5 links, scribed SC BT.

Sugar 7" N50°W, 75.2 links, scribed SC BT.

Sugar 8" N44°E, 62.7 links.

Measurements taken from true corner.

T36N R12E  
S498 34+35 W.C. 1977  
T35N R12E  
S 60 lks. to Cor.

Dated at Rhineland, Wis., this 2nd day of August, 1977

Signature Philip T. Hansen Title Registered Land Surveyor Registration No. S-498  
(County Surveyor, Registered Land Surveyor, or other duly authorized official)

Office of Register of Deeds, County of Forest, I hereby certify that the within  
instrument was filed in this office for record on the 22nd day of AUGUST, 1977  
at 3:30 o'clock P. M.

Eugene Stutzman  
(Register of Deeds)  
By \_\_\_\_\_ Deputy

DOCUMENT NUMBER --- **112150**

43612340000