

CERTIFIED LAND CORNER RESTORATION

Index No. W-9

State of Wisconsin }  
County of Forest } ss.

History of original corner establishment: No record of any previous survey.

I Philip T. Hansen, do hereby certify that on the 29th day of June, 1976, I ~~found~~ established evidence of the N 1/16 corner of Section 32 - 33 Township 36, North, Range 12 East, Fourth Principal Meridian, as described hereon; and that from this evidence I established a new monument and accessories as described hereon to perpetuate the original location of this corner.

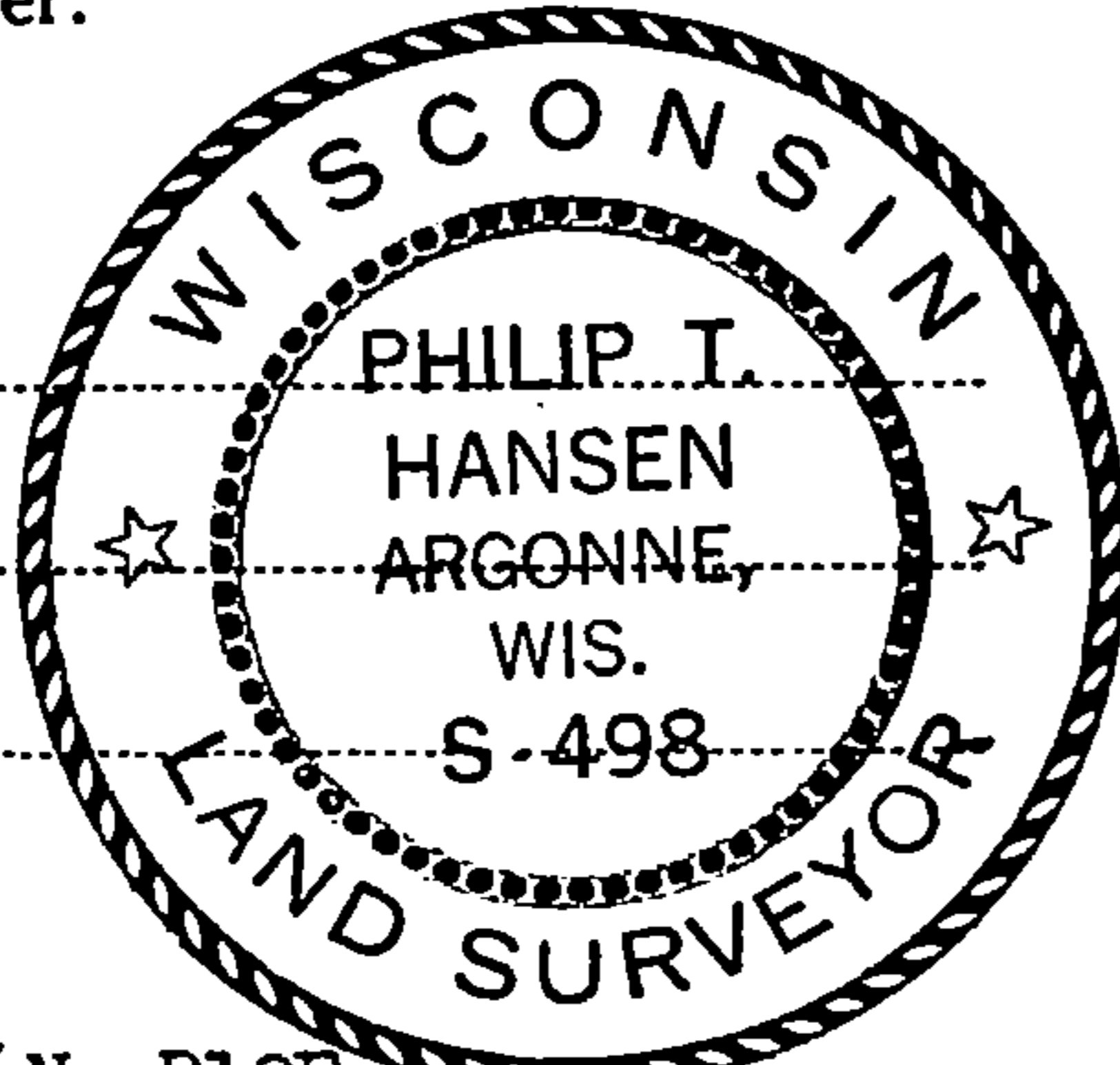
Description of corner evidence found: Corner established by proportional measurement from Section Corner 28 - 29, 32, 33 and Section Corner 32, 33, 4, 5, previously established. Total measurement 79.272 chains, bearing S2° 22' 55" W. Set corner on line 19.818 chains, equidistant to 1/4 corner.

Resident witnesses:

Glen Barker

Jim Claflin

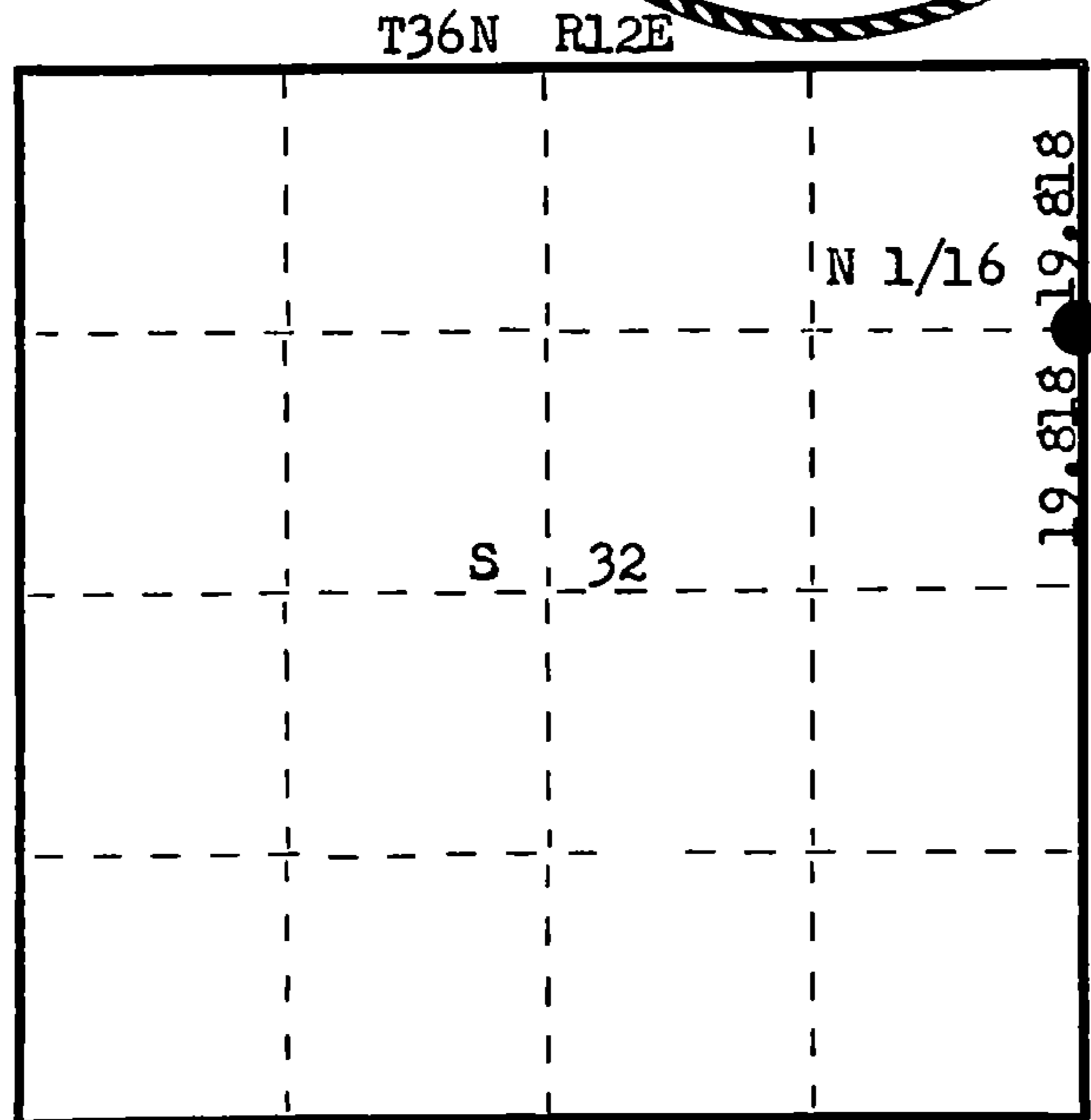
Herb Wagoner



Description of monument and accessories I established to perpetuate the original location of this corner. Set a 1 1/2" x 18" iron pipe in centerline of Tower Road, 5" below surface. Set a 1 1/2" x 4" iron pipe with 2" brass cap for Witness Corner 50 lks. West. Monument projects 18" above ground. Cap stamped. NBTs - Tamarack 8" N 55° E 87.0 lks, scribed 1/16 BT. Tamarack 8" S 35° E 100.6 lks, scribed 1/16 BT. Measurements and bearings are to true corner. Monument and BTs painted blue.

S498  
T36N R12E  
W 1/16 32 | 33 W.C.  
E 50 lks.  
CPI-1976

FORM 985 H. G. MILLER CO., MILWAUKEE



○ = Corner monument restored.

Dated at Rhineland, Wis., this 1st day of July, 1976

Signature Philip T. Hansen Title Registered Land Surveyor Registration No. S-498  
(County Surveyor, Registered Land Surveyor, or other duly authorized official)

Office of Register of Deeds, County of Forest, I hereby certify that the within instrument was filed in this office for record on the 23rd day of July, 1976 at 3:00 o'clock P. M.

EUGENE STATEZNY

(Register of Deeds)

DOCUMENT NUMBER

109754

By Eileen Schmidt Deputy

43612323000