

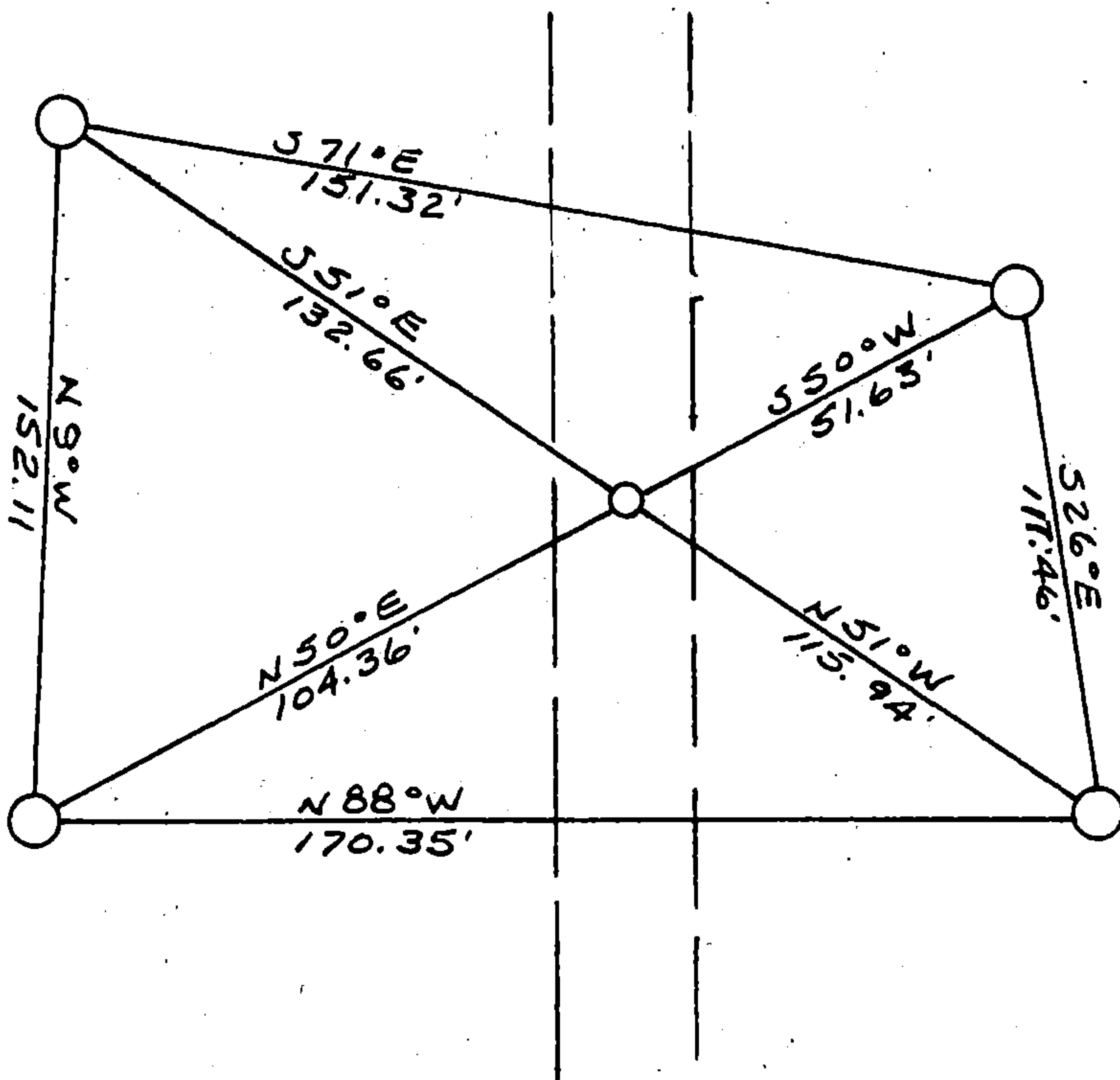
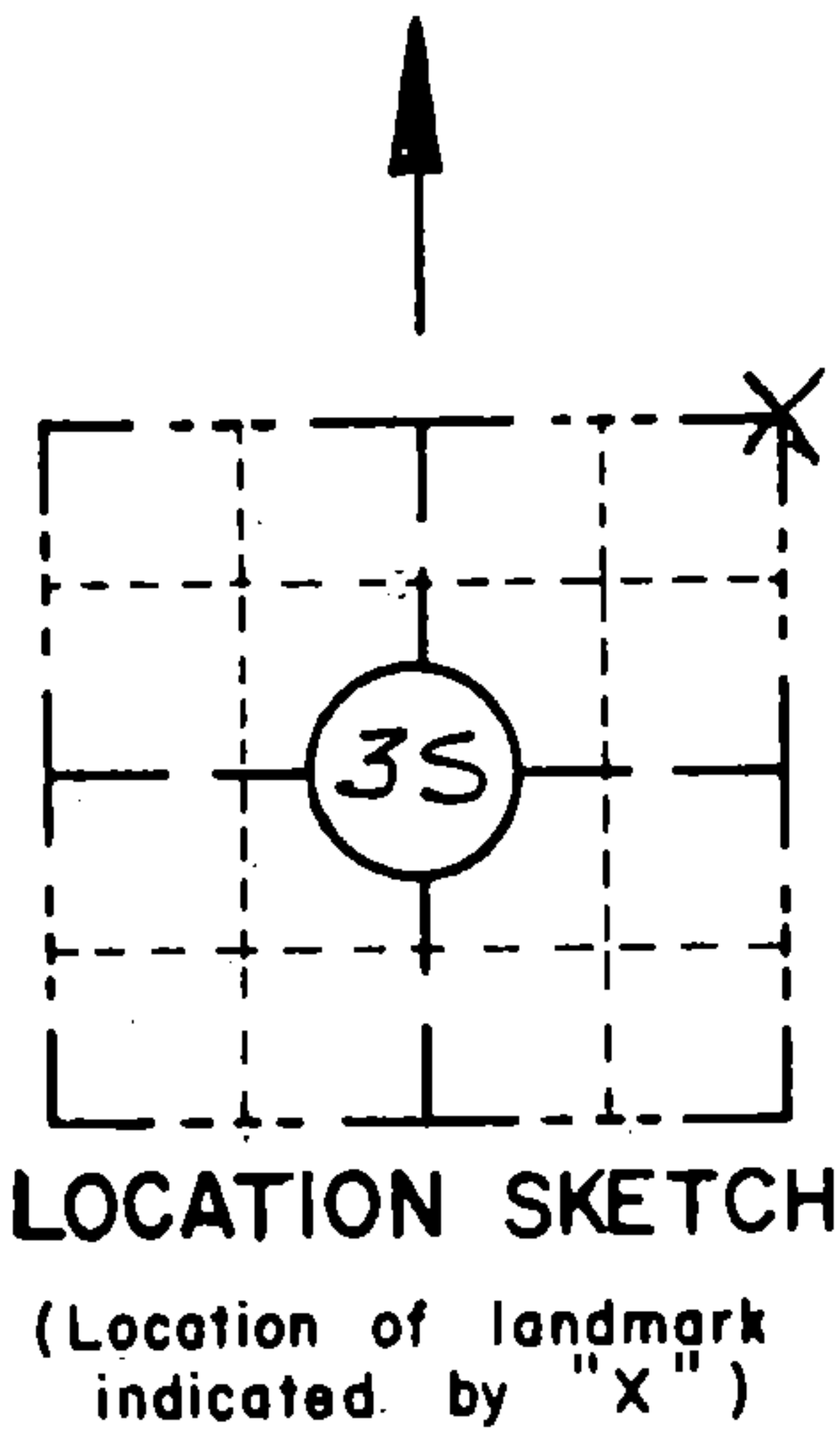
**ORIGINAL ON FILE IN CO CLERK'S OFFICE  
COPY HERE FOR REFERENCE**

**RECORD AND CERTIFICATION OF U.S.  
PUBLIC LAND SURVEY CONTROL STATION**  
E-D-716-72

State of Wisconsin / Department of Transportation

District 7	Project I. D. 9339-06-70	Located by <i>R.B. JOHNSON - SURVEY CREW CHIEF</i>			
Corner <i>N.E. COR.</i>	35 SECTION	Township 36 N	Range (E,W) 12 E	County FOREST	
Wisconsin Coordinates CORNER <i>N/A</i>	East (X)	North (Y)	Elevation (Z)	Zone	
Control Station Name	East (X)	North (Y)	Elevation (Z)	Zone	
Horizontal — NORTH AMERICAN, 1927		CONTROL DATUM Vertical — MEAN SEA LEVEL, 1929 ADJUSTMENT			
Horizontal — _____ Order		SURVEY CONTROL Vertical — _____ Order			

**SKETCH**



I hereby certify that on the 4<sup>TH</sup> day of MAY 1993, that I did locate the above corner which was evidenced by R. R. SPIKE

\_\_\_\_\_ ; I further certify that to perpetuate the location of such corner I did, at the exact location thereof, place a permanent marker consisting of NONE

\_\_\_\_\_ ; I further certify that I did establish 4 references or witness monuments consisting of 5/8" X 24" RE-BARS WITH RED PLASTIC WDOT CAPS

\_\_\_\_\_ located as shown above:

**SEAL**

Signature Registered Land Surveyor	Registration No. S--	Title
------------------------------------	-------------------------	-------

CORNER N.E. COR.  
SECTION 35  
TOWN 36 N  
RANGE 12 E

43612260000

CERTIFIED LAND CORNER RESTORATION

Index No. V-21

State of Wisconsin }  
County of Forest } ss.

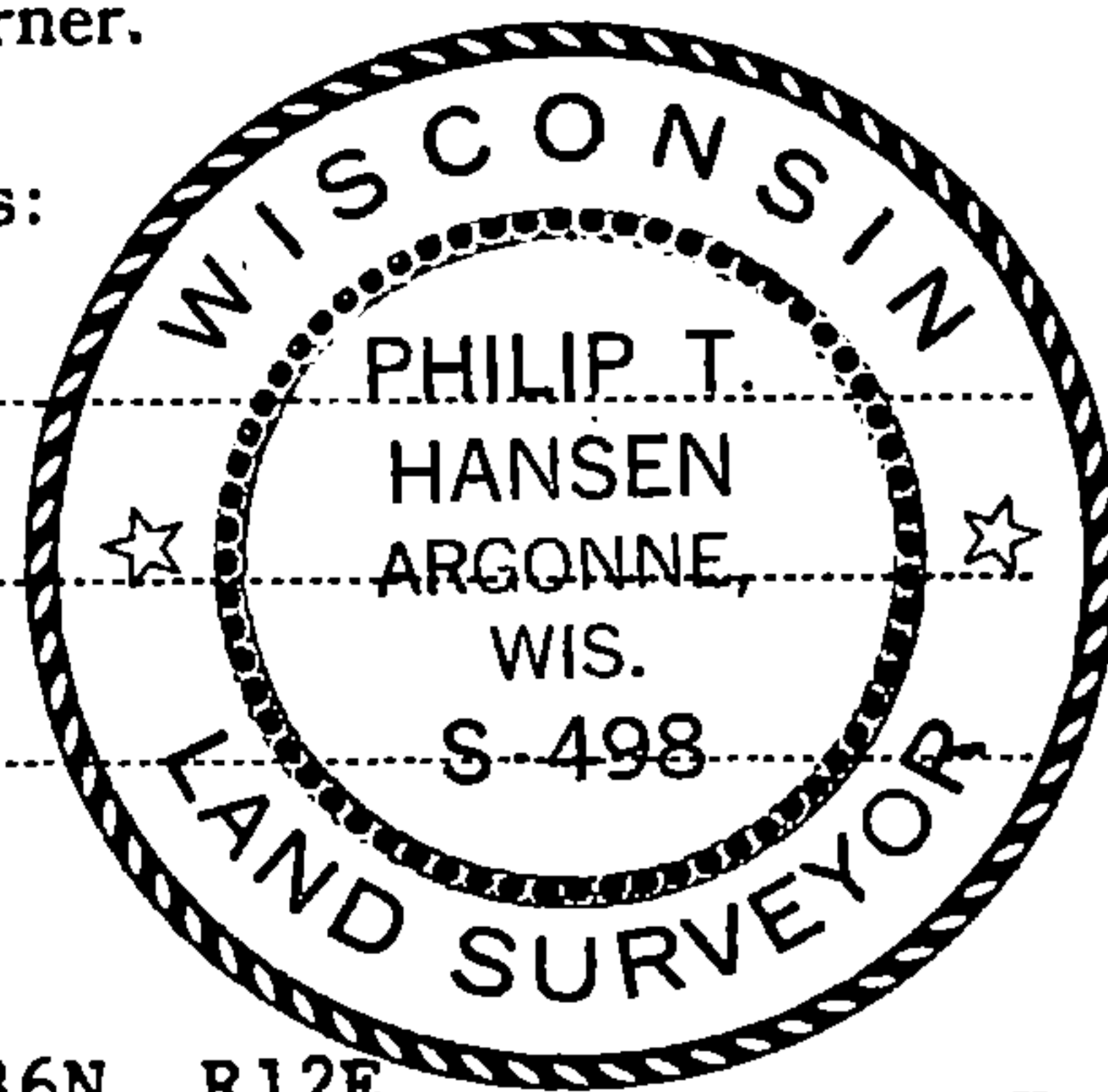
I Philip T. Hansen, do hereby certify that on the 8th day of August, 1977, I found evidence of the Section corner of Sec. 26, 25, 36, 35 Township 36, North, Range 12 East, Fourth Principal Meridian, as described hereon; and that from this evidence I established a new monument and accessories as described hereon to perpetuate the original location of this corner.

Resident witnesses:

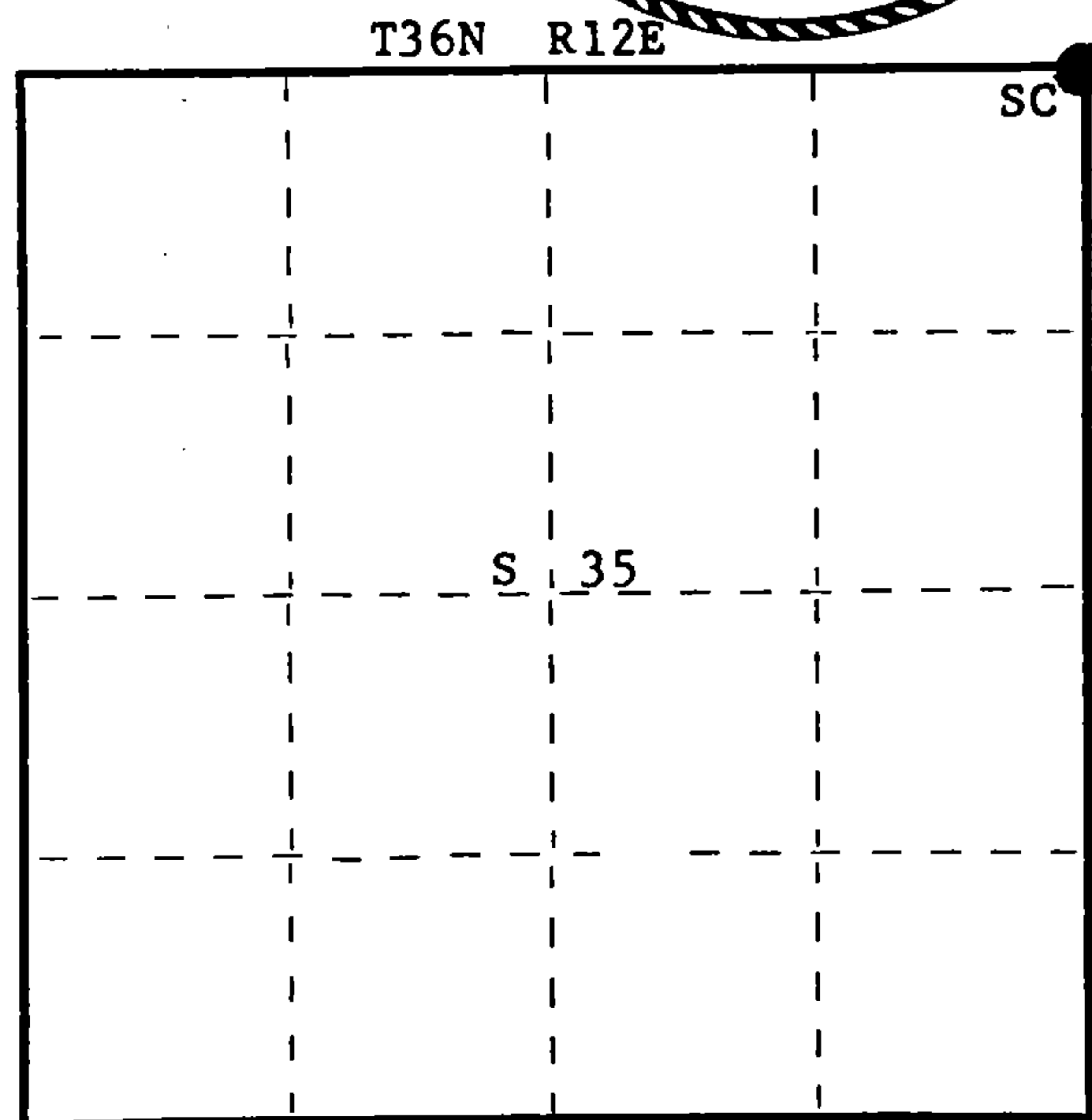
Glen Barker

Jim Claflin

Herb Wagoner



FORM 985 H. C. MILLER CO., MILWAUKEE



○ = Corner monument restored.

History of original corner establishment:

Original Corner established by J.L. Nowlin, Deputy Surveyor, in 1859, from which Fir 8" bears N75°E, 12 links and Hemlock 8" bears S50°W, 15 links.

Corner re-established by Tom Arnott, Registered Land Surveyor. Set PK in highway at intersection of N-S Highway S - south, town road east and Kendall Road west. Used this for subdivision of Section 25.

Description of corner evidence found:

Recovered PK on the east edge of highway S.

Description of monument and accessories I established to perpetuate the original location of this corner.

Drove RR spike in place of PK in road.

Set 2 1/2" Berntsen A-1 Federal Monument 100 links west for witness corner.

Monument projects 18" above ground. Cap stamped:

Marked BO from true corner.

Hi line pole #3612-35E9 S66°W, 58.4 links.

Hi line pole #3612 36W1 S41°E, 62.4 links.

T36N R12E  
Sec. 26 | 25 W.C.  
35 | 36  
S498-1977  
E-100 lks to Cor.

Dated at Rhineland, Wis., this 10th day of August, 1977

Signature Philip T. Hansen Title Registered Land Surveyor Registration No. S-498  
(County Surveyor, Registered Land Surveyor, or other duly authorized official)

Office of Register of Deeds, County of Forest, I hereby certify that the within instrument was filed in this office for record on the 22nd day of AUGUST, 1977 at 3:30 o'clock P. M.

Eugene Stutzman  
(Register of Deeds)  
By..... Deputy

DOCUMENT NUMBER **112162**

43612260000