

CERTIFIED LAND CORNER RESTORATION

Index No. P-1

State of Wisconsin }  
County of Forest } ss.

I Kim H Pritzlaff, do hereby certify that on the 17th day of February, 1988, I found evidence of the Quarter corner of Sections 19 & 24 Township 36 North, Range 13, Fourth Principal Meridian, as described hereon; and that from this evidence I established a new monument and accessories as described hereon to perpetuate the original location of this corner.

Resident witnesses:

Markete Teuteberg, RLS

Harry Smith

History of original corner establishment:

In 1858 Alfred Willard, contract surveyor with the government set a wood post at this corner location using the following bearing trees:

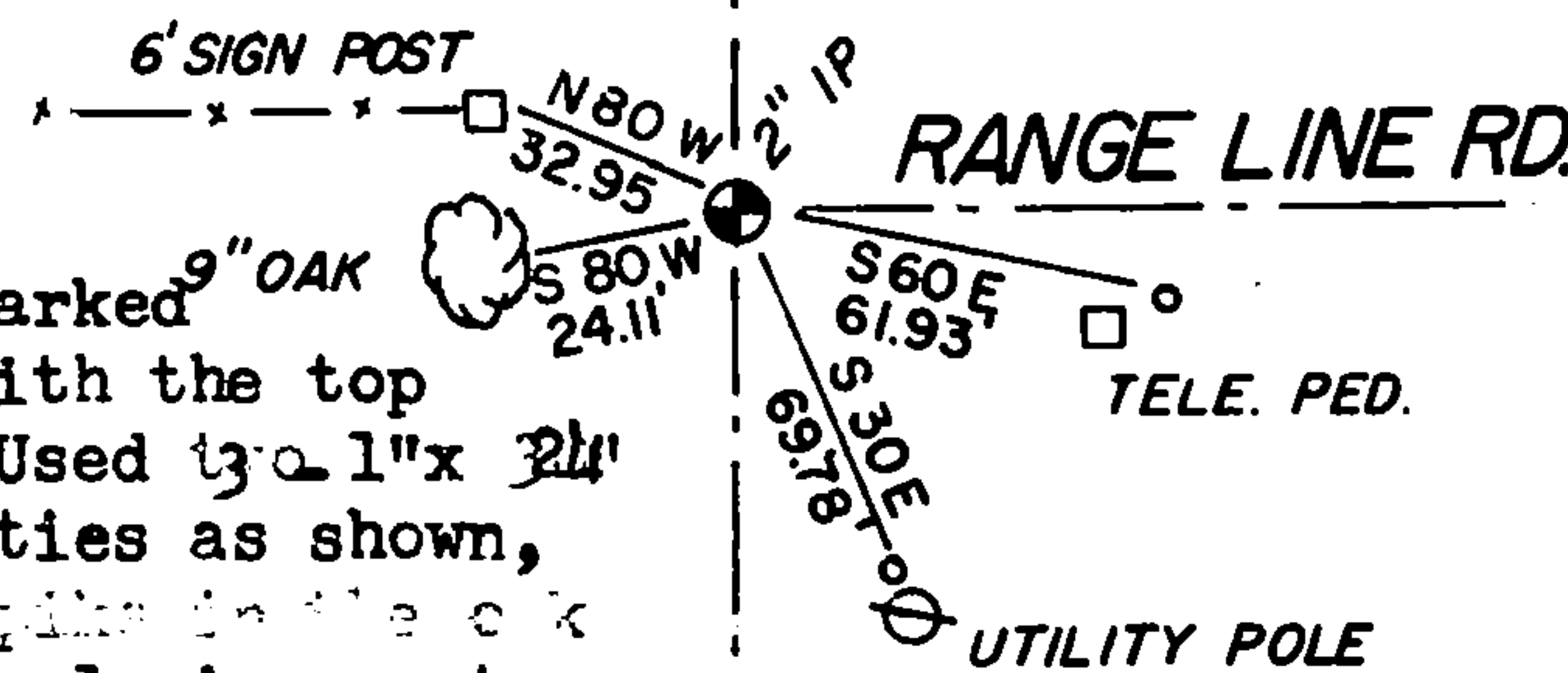
Sugar 10" N80W 16 links  
Sugar 10" S70E 22 links

In 1918 I.R. Ritter restored this corner using a 3" iron pipe and two more 3" iron pipes set east and west for accessories.

Description of corner evidence found:

During a private survey in the northeast quarter of Section 19, I located a 2" iron pipe in the centerline of the intersection of two town roads. The iron pipe fit Ritter's distances and the other two witness corners were destroyed by road building and cultivation to the west. I accepted the iron pipe as the corner perpetuation and monumented same.

Description of monument and accessories I established to perpetuate the original location of this corner:



Corner is presently marked with a 2" iron pipe with the top flared from plowing. Used 3/4" x 2 1/2" iron pipe for corner ties as shown, an 8 penny aluminum spike in the oak tree and a 6 foot steel sign post as accessories

Dated at Oconto Falls, Wis., this 19th day of February, 1988

Signature Kim H Pritzlaff Title Registered Land Surveyor Registration No. 1259  
(County Surveyor, Registered Land Surveyor, or other duly authorized official)

Office of Register of Deeds, County of Forest, I hereby certify that the within instrument was filed in this office for record on the 26th day of February, 1988 at 5:00 o'clock A.M.

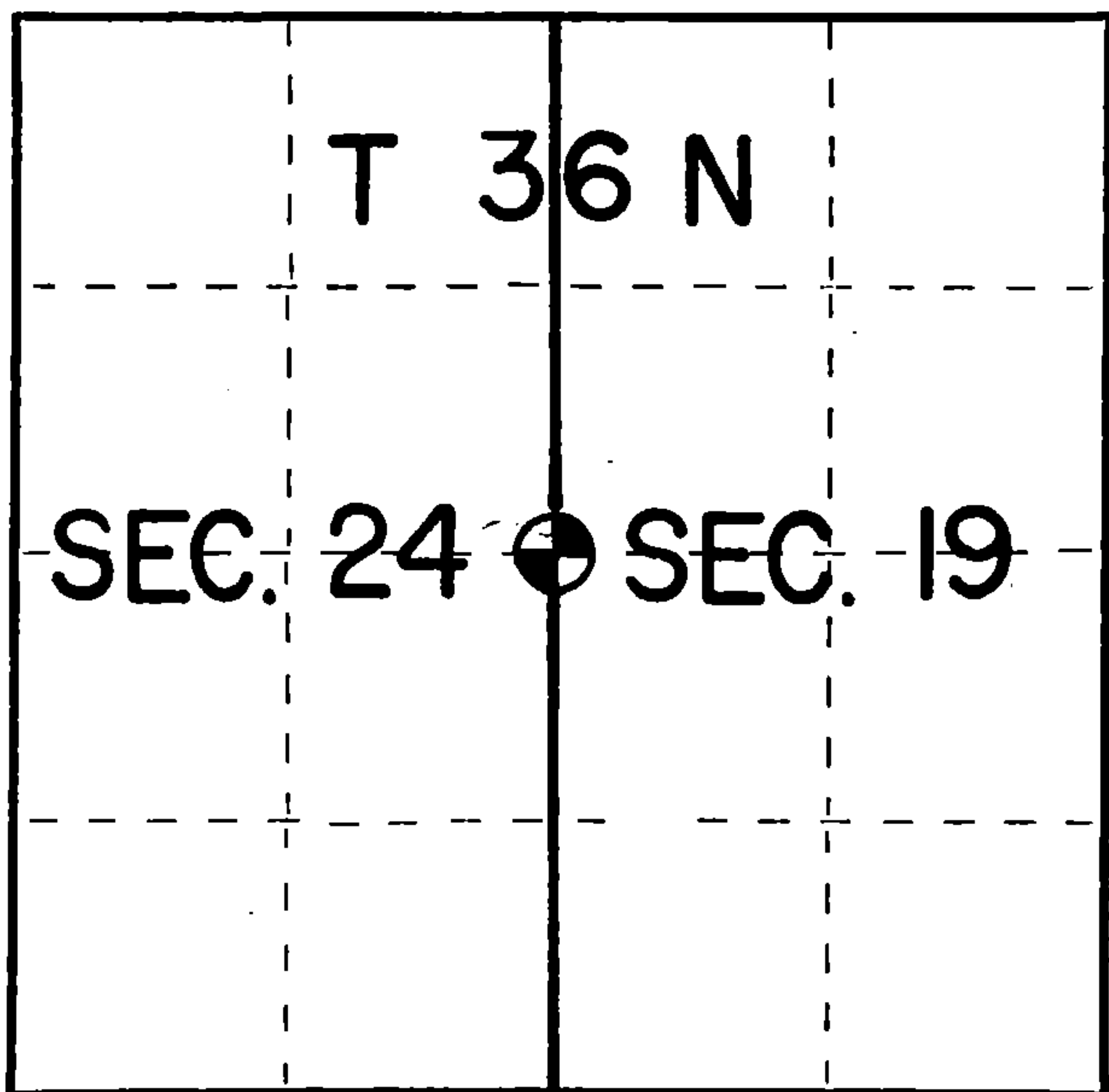
Paul Ackendrenner  
(Register of Deeds)

By Deputy

DOCUMENT NUMBER 134723

FORM 985 M. C. MILLER CO., MILWAUKEE

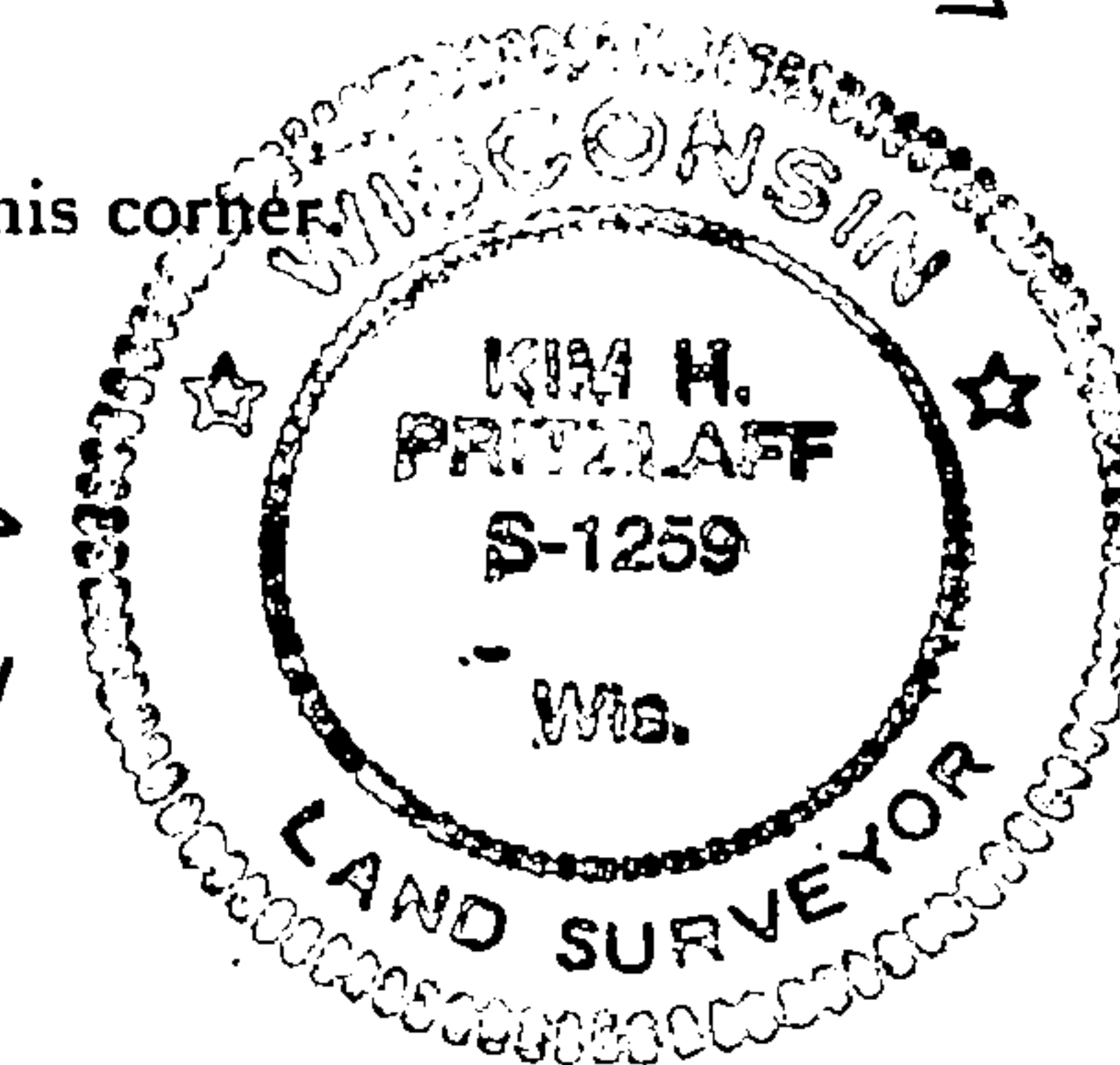
R 12 E



○ = Corner monument restored.

R 13 E

43612242000



REGISTER'S OFFICE }  
Forest County, Wis.

Received for record this 20<sup>th</sup> day  
of November A.D., 2009 at  
9:00 o'clock A.M. and recorded  
in Vol. Corner Restoration  
page P-25

Kay Severson, Deputy  
Register of Deeds

Document Number  
202096

# U.S. PUBLIC LAND SURVEY MONUMENT RECORD

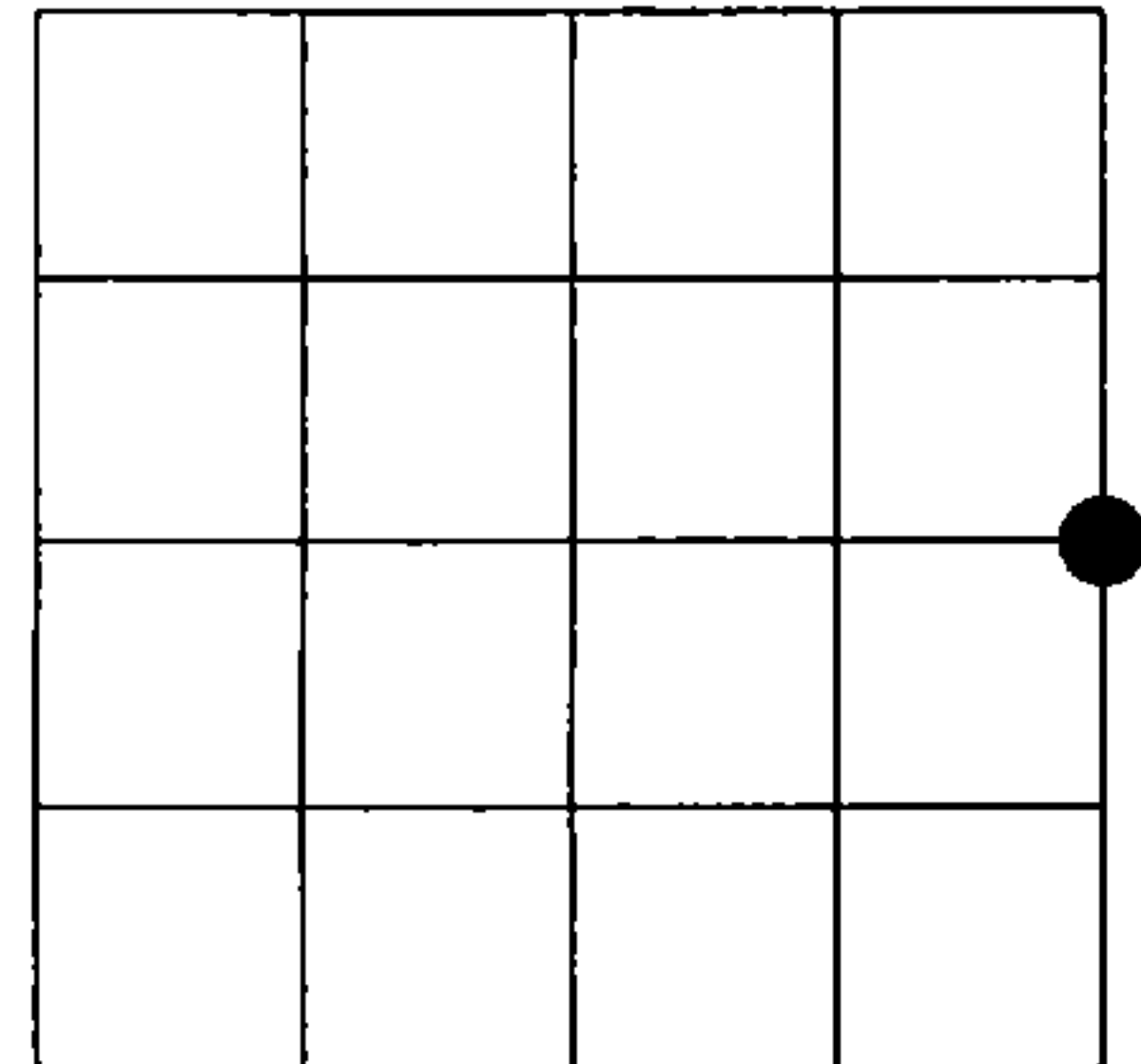
NOTE: This form is intended and designed to fulfill all requirements of Wisconsin Administrative Code, Chapter A-E 7.08 U.S. Public Land Survey Monument Record (3)(a)(b)(c)(d)(e)(f)(g)(h)(i). An additional sheet may be added if necessary to conform with said requirements.

(a) Corner location: Township 36 North

Range 12 East

Town of Crandon

Forest County, Wisconsin



Section 24

(b)(f)(g)(h) Description of monument found at this corner and if it was accepted, state all evidence (material, testimonial, occupational, plats, records, other monuments) used as a basis for accepting. If not accepted or if nothing was found, state evidence used as basis for establishing location. If reestablished through lost corner proportionate methods, indicate all monuments, distances and directions used to establish. Indicate type of monument found or set and sign post.

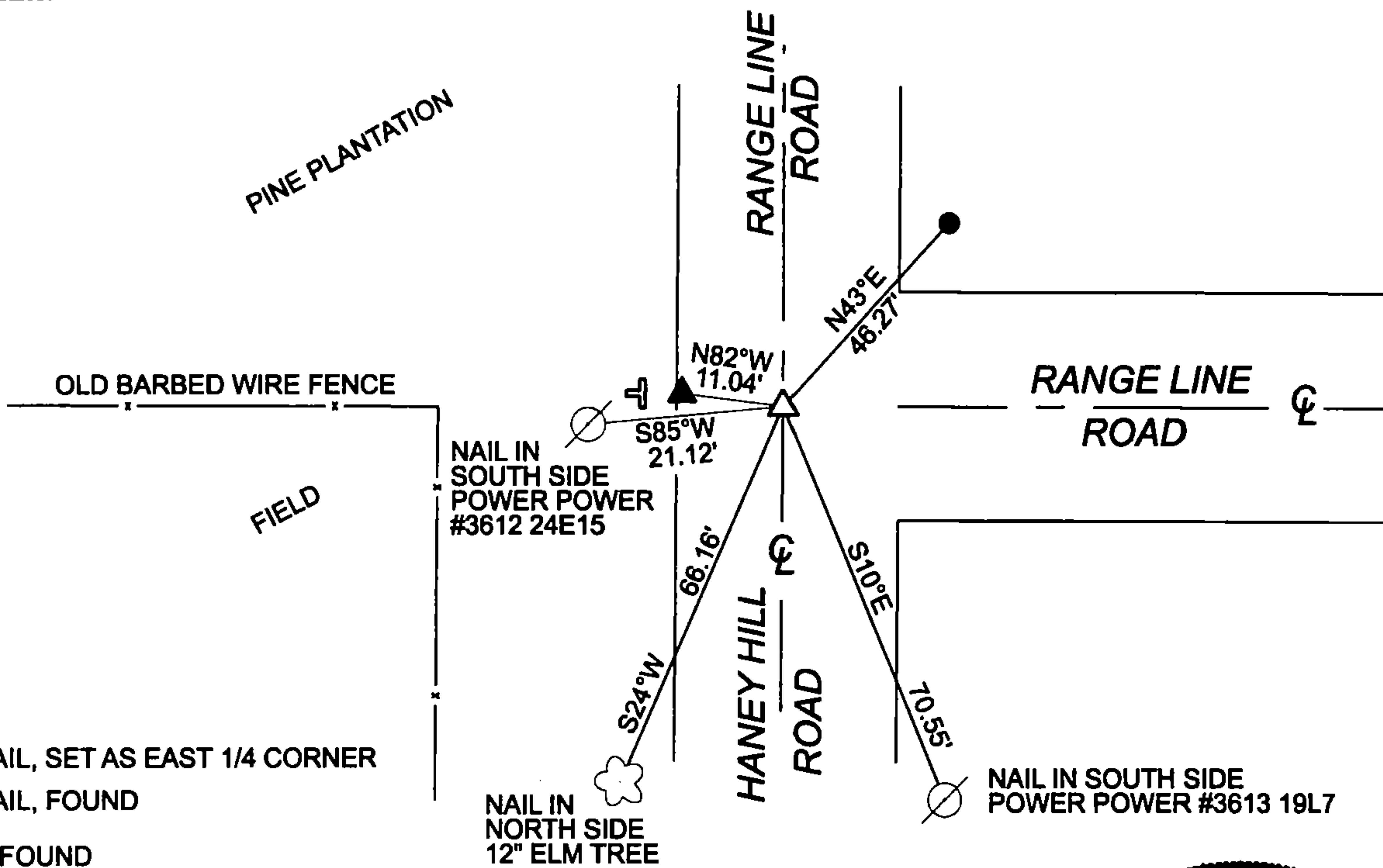
JUNE 1859 - ALFRED MILLARD SET POST COMMON TO SECTIONS  
24, T36N, R12E AND 19, T36N, R13E AND MADE FOLLOWING BEARING TREES:  
SUGAR 10°, S70°E, 22 LINKS  
SUGAR 10°, N80°W, 16 LINKS

DECEMBER 2006 - EAGLE LANDMARK FOUND AND ACCEPTED RAILROAD SPIKE IN  
INTERSECTION OF RANGE LINE AND HANEY HILL ROADS AS EAST 1/4 CORNER.

FEBRUARY 2009 - MIKE TREML FOUND AND ACCEPTED A P.K. NAIL IN  
INTERSECTION OF RANGE LINE AND HANEY HILL ROADS AS EAST 1/4 CORNER.

NOVEMBER 2009 - I FOUND A MAG 11 FEET EAST OF CENTERLINE THAT DOES NOT  
MATCH ANY RECORDED DISTANCES. SET NEW MAG NAIL NEAR INTERSECTION  
OF RANGE LINE AND HANEY HILL ROADS MATCHING DISTANCES FROM TREML'S CSM.

(c)(d)(e) Plan view of corner with ties to at least 4 witness monuments. If in disagreement with previously established corner, show the distances between the two corners and also indicate the ties to the disputed corner.



- △ MAG NAIL, SET AS EAST 1/4 CORNER
- ▲ MAG NAIL, FOUND
- 3/4" IR, FOUND
- ⊕ METAL SURVEY MARKER SIGN FOUND ±33' WEST

(i) I, Jeffrey L DeMuth, Registered Land Surveyor #S-2656, hereby certify that the corner location on this record was determined by me or under my direction and control and that this U.S. Public Land Survey Monument Record is correct and complete to the best of my knowledge and belief.



*Jeffrey L. DeMuth*  
Signature

11/19/2009  
Date

43612 24 2000

Index No.

P-25