

Document Number  
172368

REGISTER'S OFFICE }  
Forest County, Wis. }  
Received for record this 24<sup>th</sup> day  
of July A.D., 2001 at  
9:00 o'clock A.M. and recorded  
in Vol. Corner Restoration  
page R-17

*Kay Swanson, Deputy*  
Register of Deeds

U.S. PUBLIC LAND SURVEY MONUMENT RECORD

(As Required by WI Adm. Code)

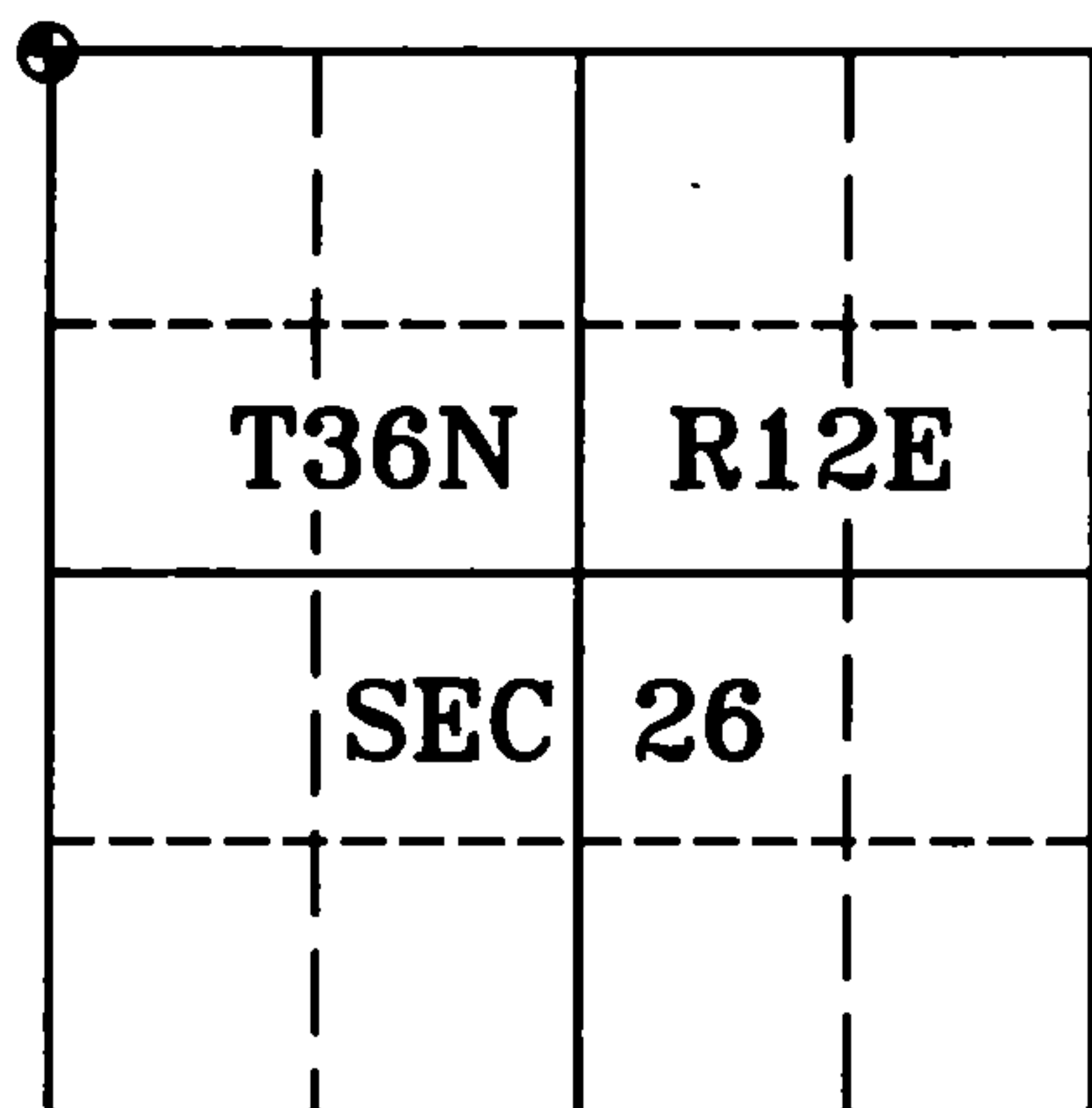
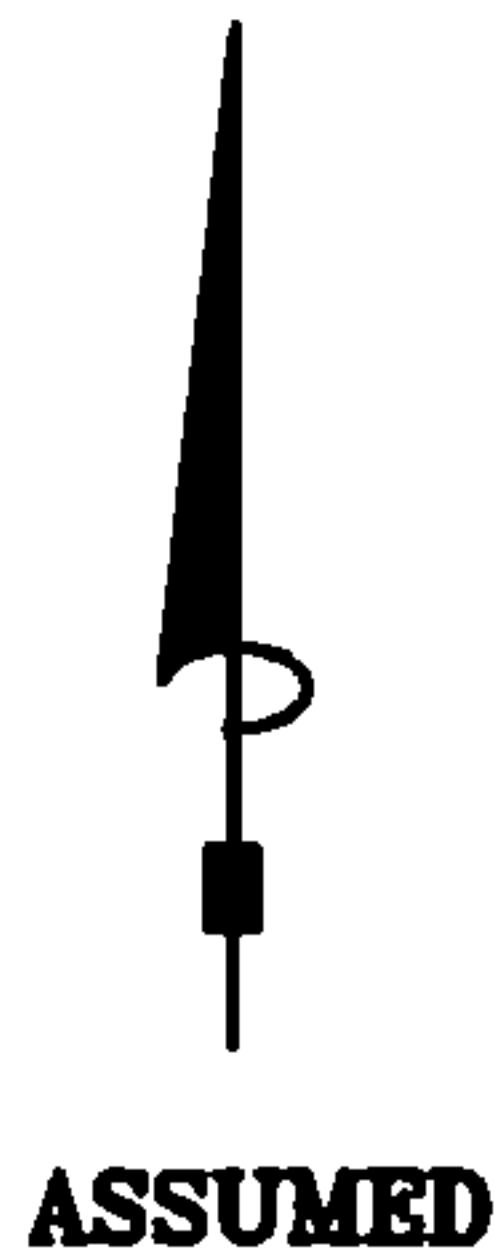
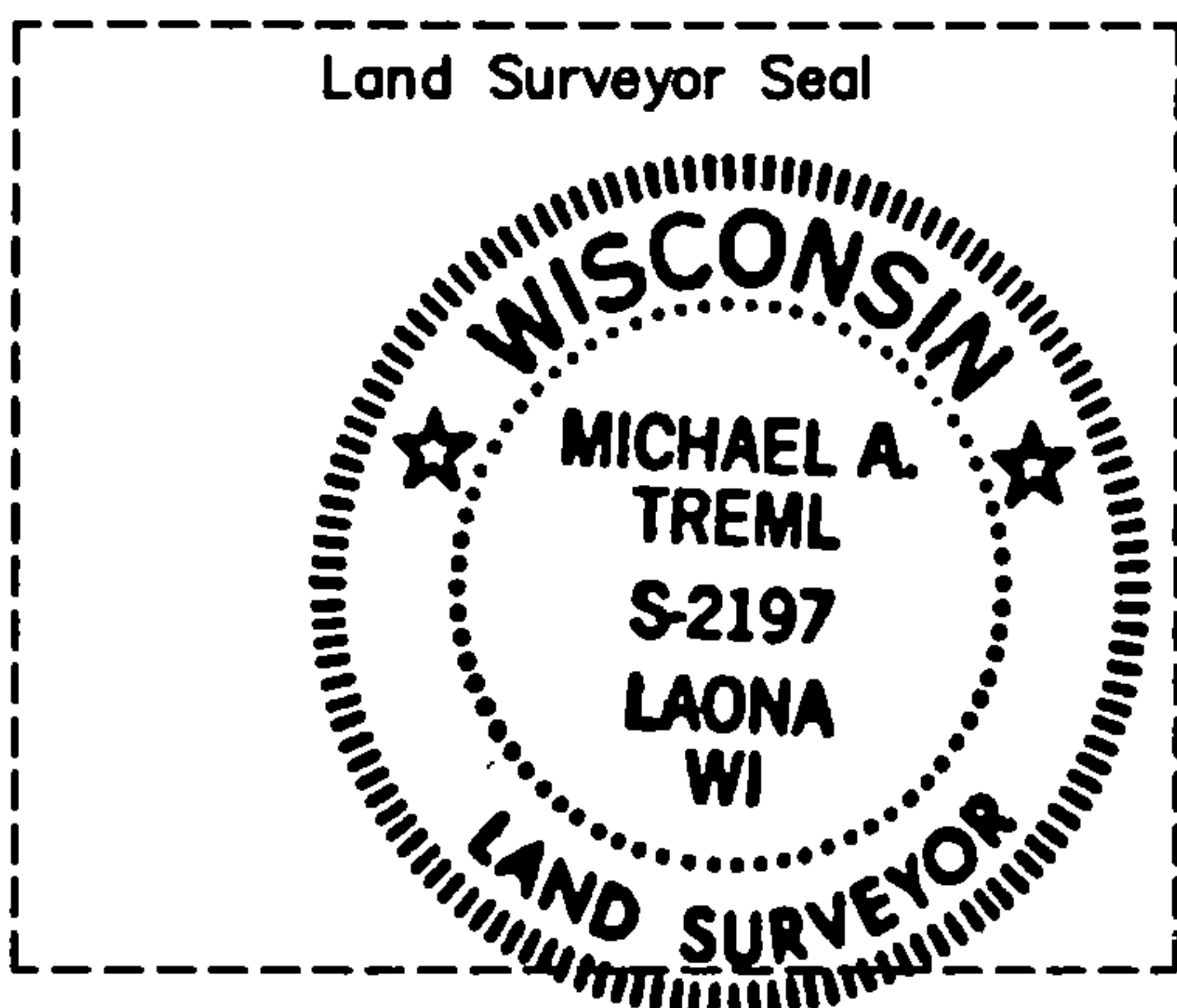
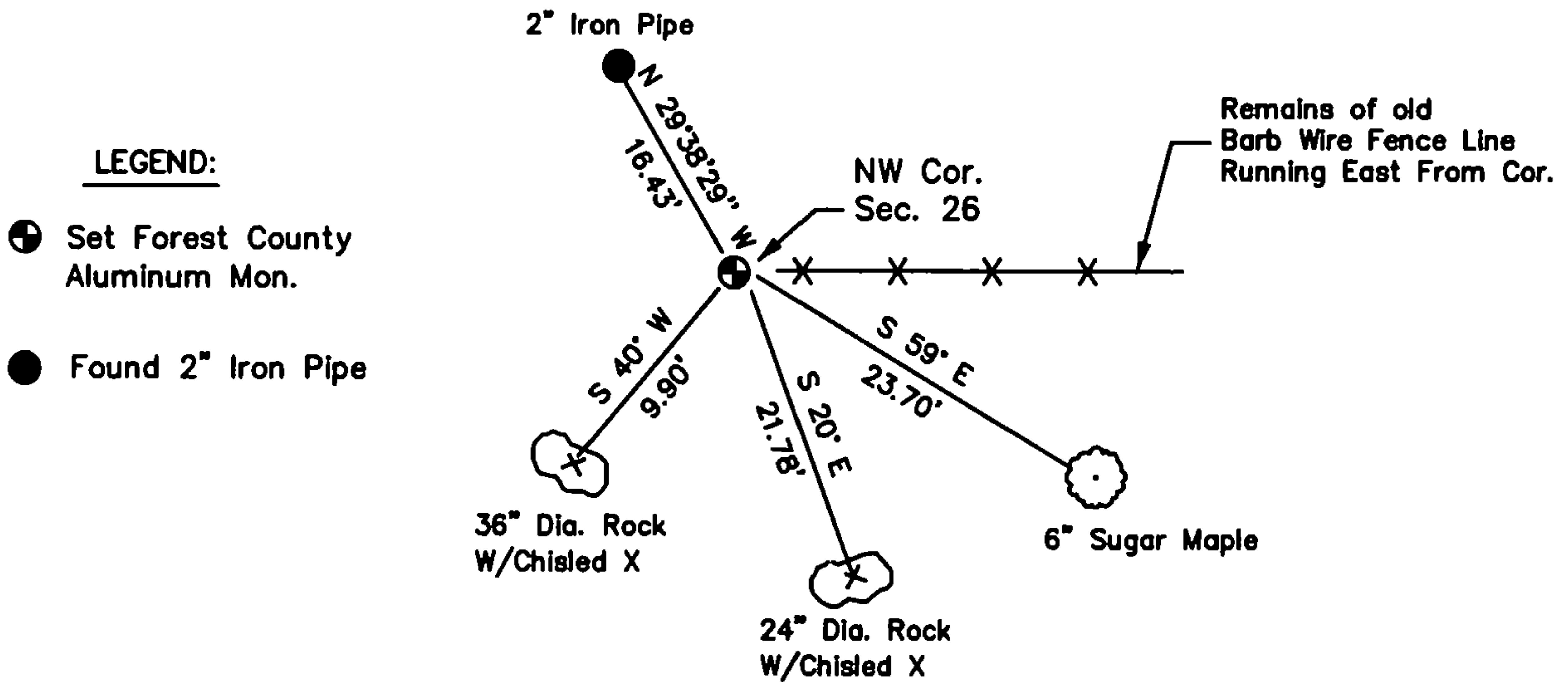
History of original corner establishment and subsequent restorations and descriptions of any record, monument, occupational, testimonial or other evidence considered:

- 1859 - William Daugherty, set original corner post and made the following B.T.'s:  
Hemlock, 10", N 51° E, 40 lks.  
Birch, 14", S 22° W, 14 lks.
- 1921 - I. R. Ritter, Forest County Surveyor, set a wooden stake at the Section Corner position. He also references this corner by bearing and distance from two Rocks as follows:  
Rock 36" Dia., S 40° W, 15 links, 9.90' & Rock 24" Dia., S 20° E, 33 links, 21.78'
- 2001 - I found the two rocks mentioned above, they were the only exposed rocks in the vicinity. Measuring the record distance and bearing from the rocks I dug down 14" and recovered remains of the wooden stake set by Ritter. I then set a stamped Forest County Aluminum Monument at this found corner position.

Corner was: (Check All That Apply)

- Restored through acceptance of an obliterated evidence location.  
 Restored through acceptance of a found perpetuated location.  
 Considered a lost corner and reestablished through lost corner proportionate methods (include a plan view drawing showing distances and directions to other Public Land Survey Corners used for proportioning and determining the corner location).  
 Restored or reestablished in a location that differs from a previous restoration or reestablishment (include a plan view drawing and indicate what was set and/or found).

Describe the monument and accessories used to perpetuate the location of this corner (include a plan view drawing and indicate what was set and/or found).



I, Michael A. Trembl, RLS  
(type or print name) certify that the corner location shown on this record was determined by me or under my direction and control and that this U.S. Public Land Survey Monument Record is correct and complete to the best of my knowledge and belief.

The Northwest corner of  
Section 26 T. 36 N., R. 12 E.  
Forest County, WI

*Michael A. Trembl* 7-23-01  
Signature Date

Index No. R-17

43612220000

R-17