

REGISTER'S OFFICE  
 Forest County, Wis.  
 Received for record this 26<sup>th</sup> day  
 of October A.D., 2005 at  
8:35 o'clock A.M. and recorded  
 in Vol. Corner Restorations  
 page P-13  
*Kay Swanson*  
 Register of Deeds

**Document Number**  
**189019**

**U.S. PUBLIC LAND SURVEY MONUMENT RECORD**

(As Required by WI Adm. Code)

History of original corner establishment and subsequent restorations and descriptions of any record, monument, occupational, testimonial or other evidence considered:

- 1859 - William E. Daugherty, set original corner post and made the following B.T.'s:  
 Sugar, 6", N 63° W, 21 lks., 13.86 feet.  
 Birch, 12", S 27° E, 13 lks., 8.58 feet.
- 1984 - Glen Barker, RLS found a 1/2" iron pin marking the 1/4 corner between Sections 21 & 22 and used corner for CSM's Vol. 3, Pg. 140 & Vol. 5, Pg. 58.
- 2005 - I found a 1/2" iron pin below asphalt surface of road. Iron pin falls in center of Town Road and along old barb wire fences running North & South from corner. I accepted this corner as best available evidence of the 1/4 corner position. I set a Railroad Spike over iron pin and set a witness corner North on Section Line.

Corner was: (Check All That Apply)

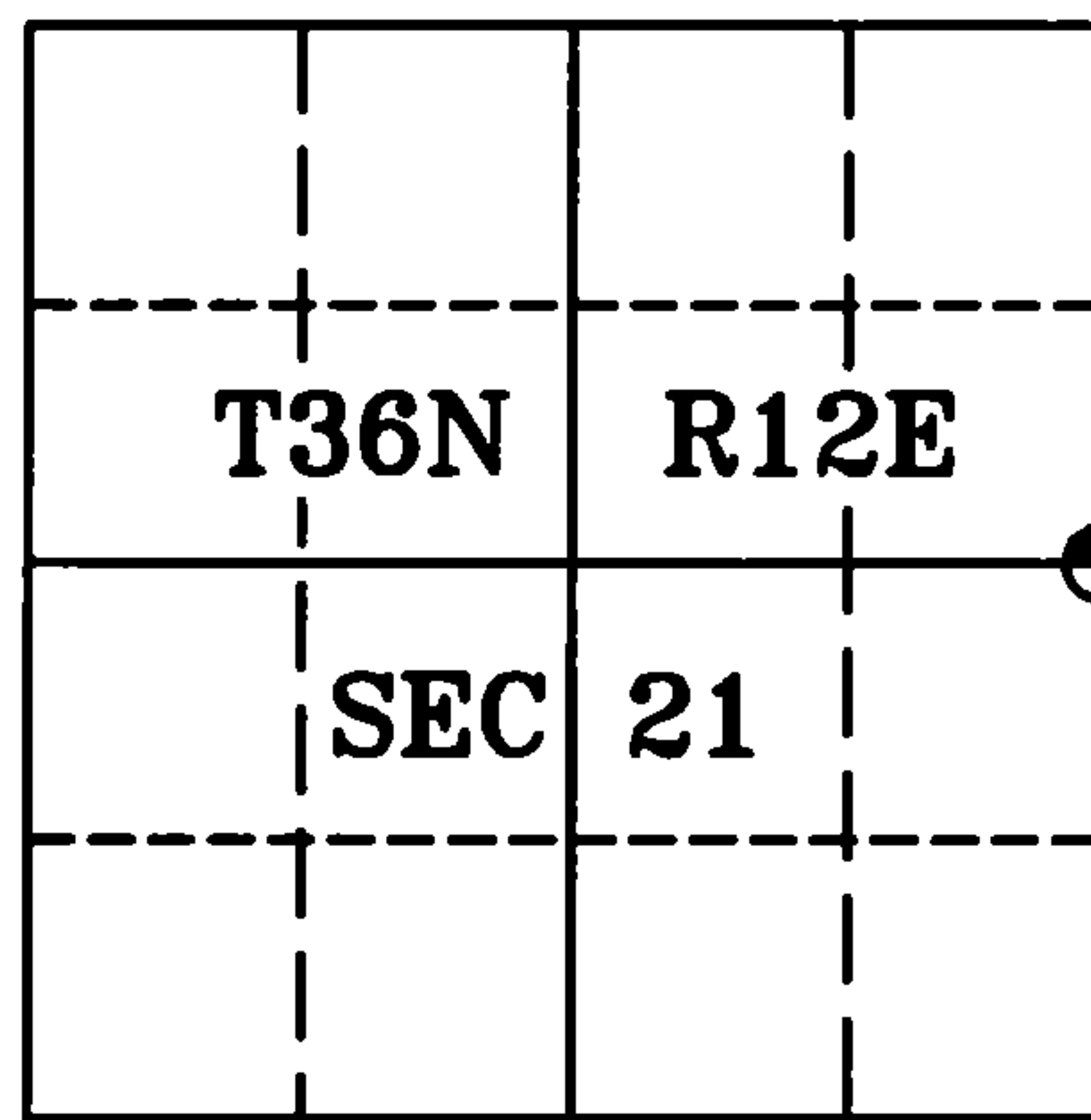
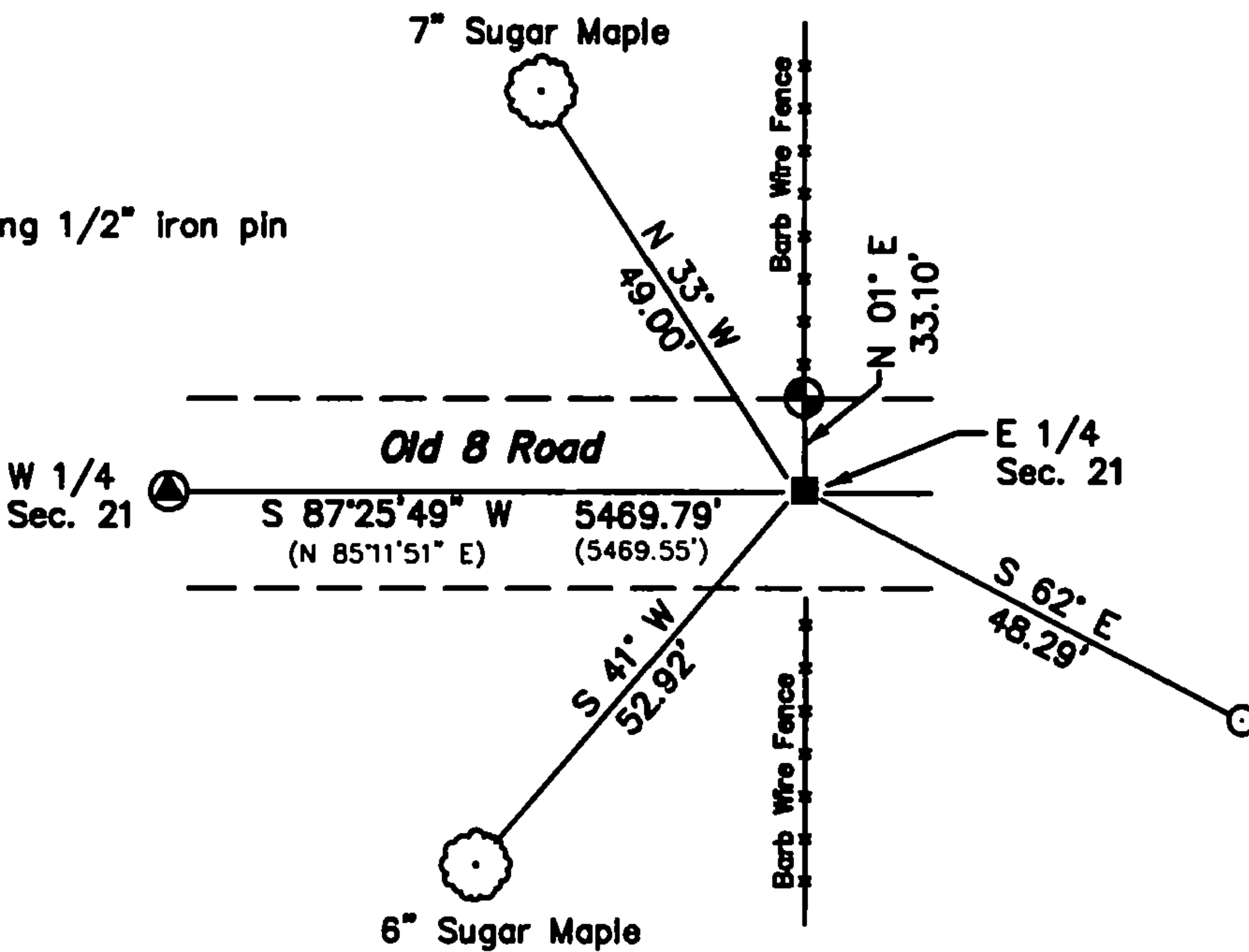
- Restored through acceptance of an obliterated evidence location.
- Restored through acceptance of a found perpetuated location.
- Considered a lost corner and reestablished through lost corner proportionate methods (include a plan view drawing showing distances and directions to other Public Land Survey Corners used for proportioning and determining the corner location).
- Restored or reestablished in a location that differs from a previous restoration or reestablishment (include a plan view drawing and indicate what was set and/or found).

Describe the monument and accessories used to perpetuate the location of this corner (include a plan view drawing and indicate what was set and/or found).

**LEGEND:**

- Set 2" x 30" Alu. Wit. Mon.
- Set Railroad Spike over existing 1/2" iron pin
- Set 3/4" x 20" iron pipe
- Existing P.K. Nail
- ( ) Recorded As

Note: All distances are taken to nail in side of tree.



I, Michael A. Tremel, RLS  
 (type or print name) certify that the corner location shown on this record was determined by me or under my direction and control and that this U.S. Public Land Survey Monument Record is correct and complete to the best of my knowledge and belief.

The East Quarter corner of  
 Section 21 T. 36 N., R. 12 E.  
 Forest County, WI

*Michael A. Tremel* 10/20/05  
 Signature Date

Index No. P-13  
 2005