

Document Number
192902

REGISTER'S OFFICE
Forest County, Wis.
Received for record this 28th day
of NOVEMBER A.D., 2006 at
8:50 o'clock A.M. and recorded
in Vol. CR CORNER
page D-3 RESTORATIONS
Paul H. Hahn
Register of Deeds

U.S. PUBLIC LAND SURVEY MONUMENT RECORD
(As Required by WI Adm. Code)

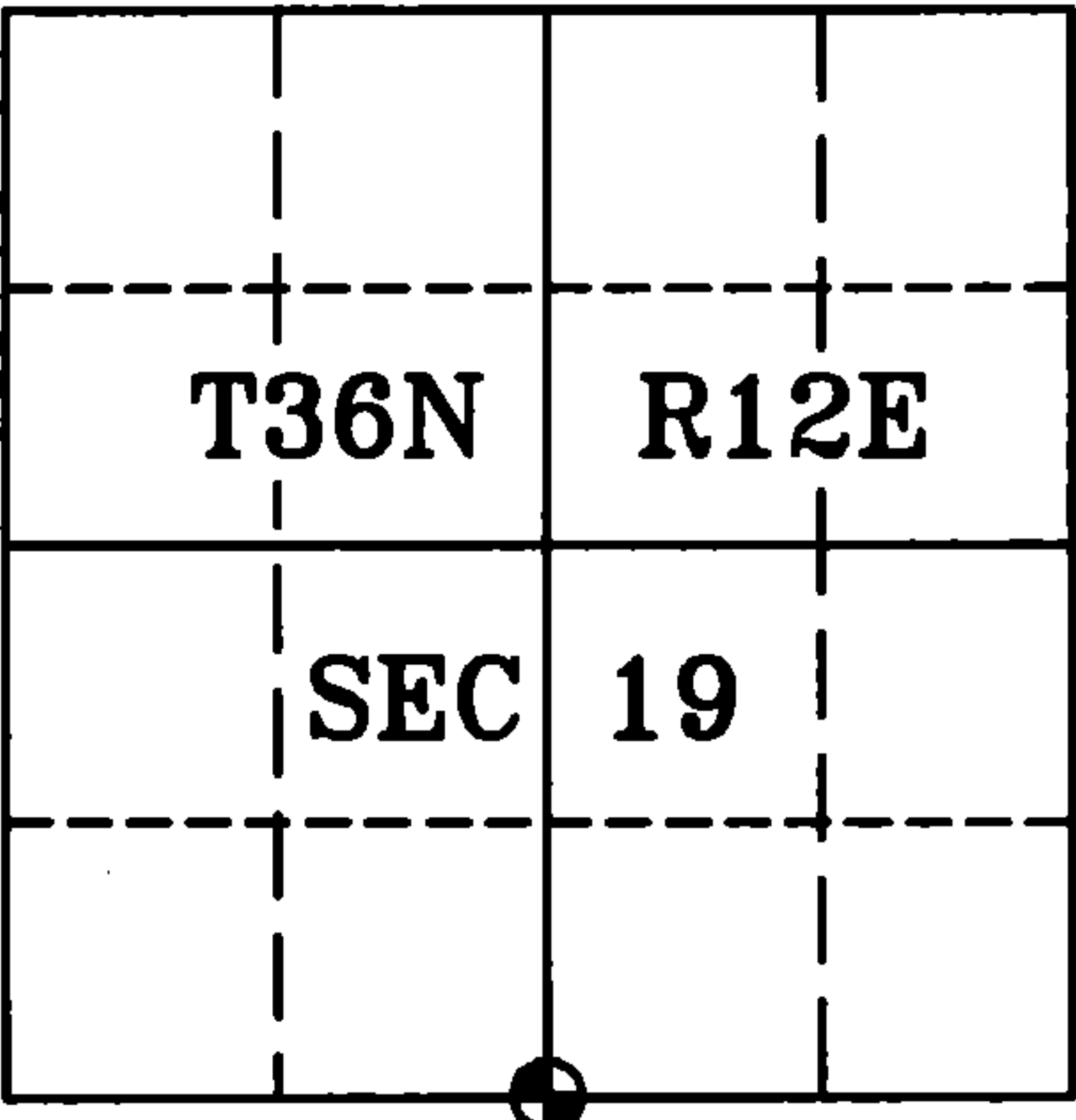
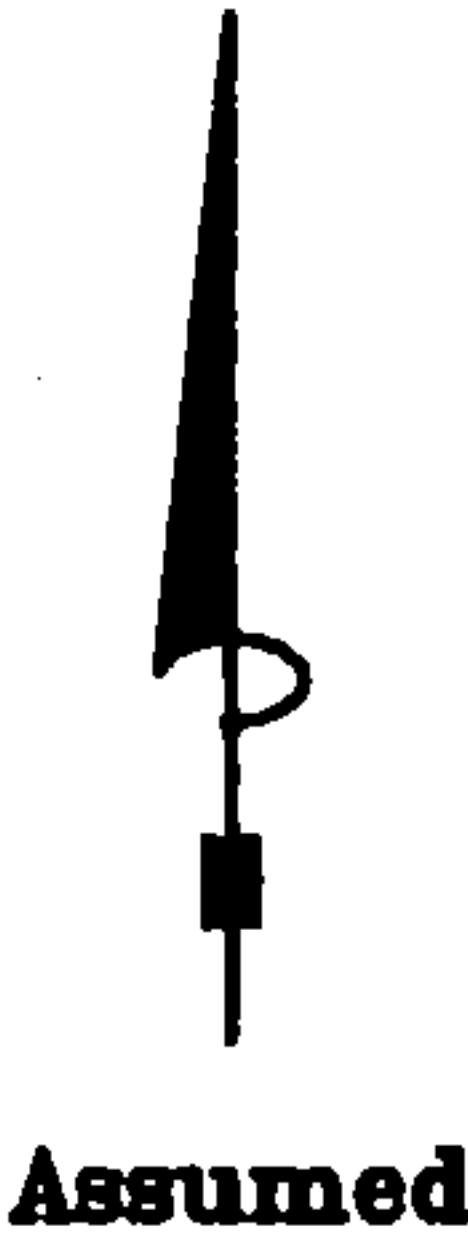
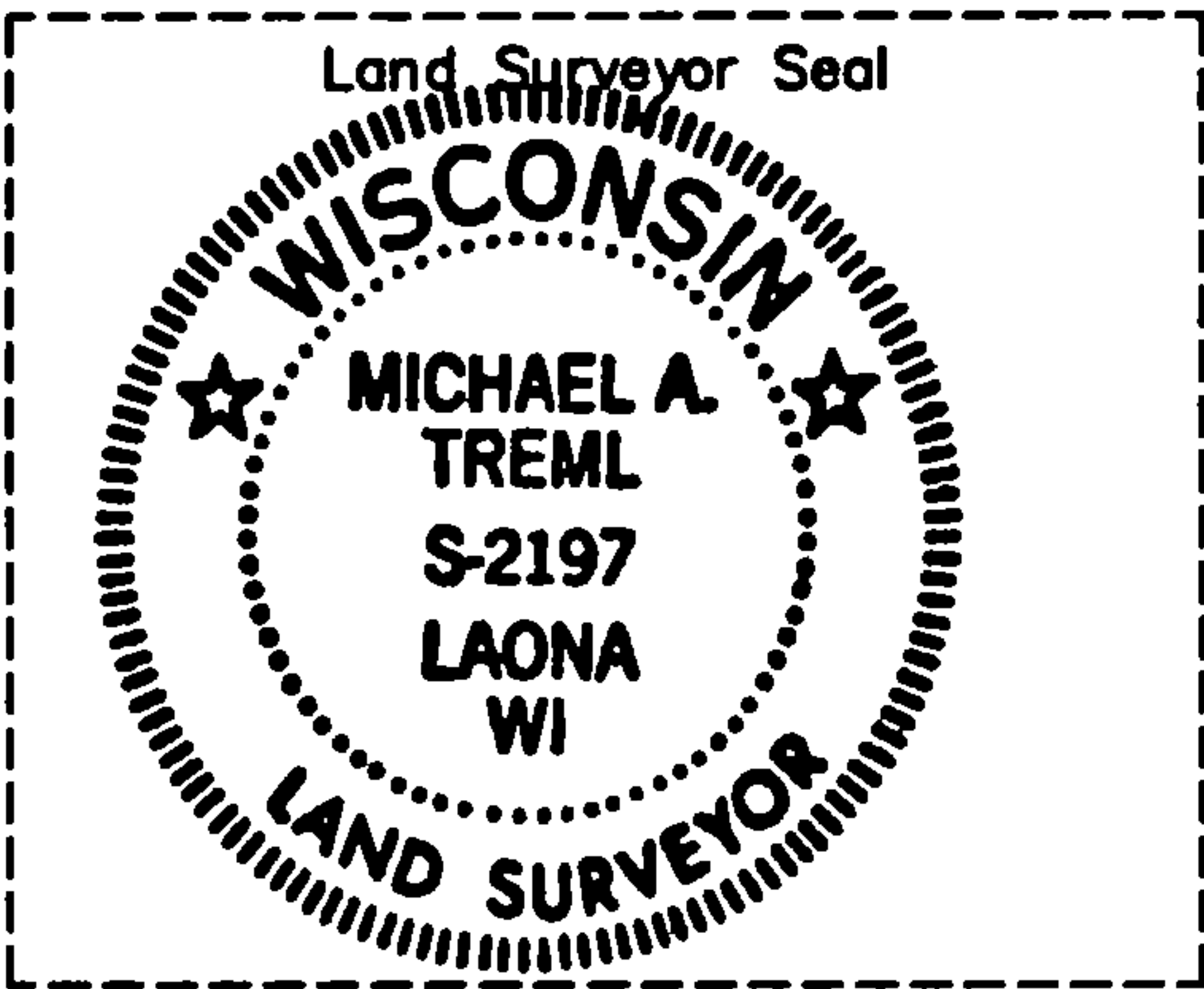
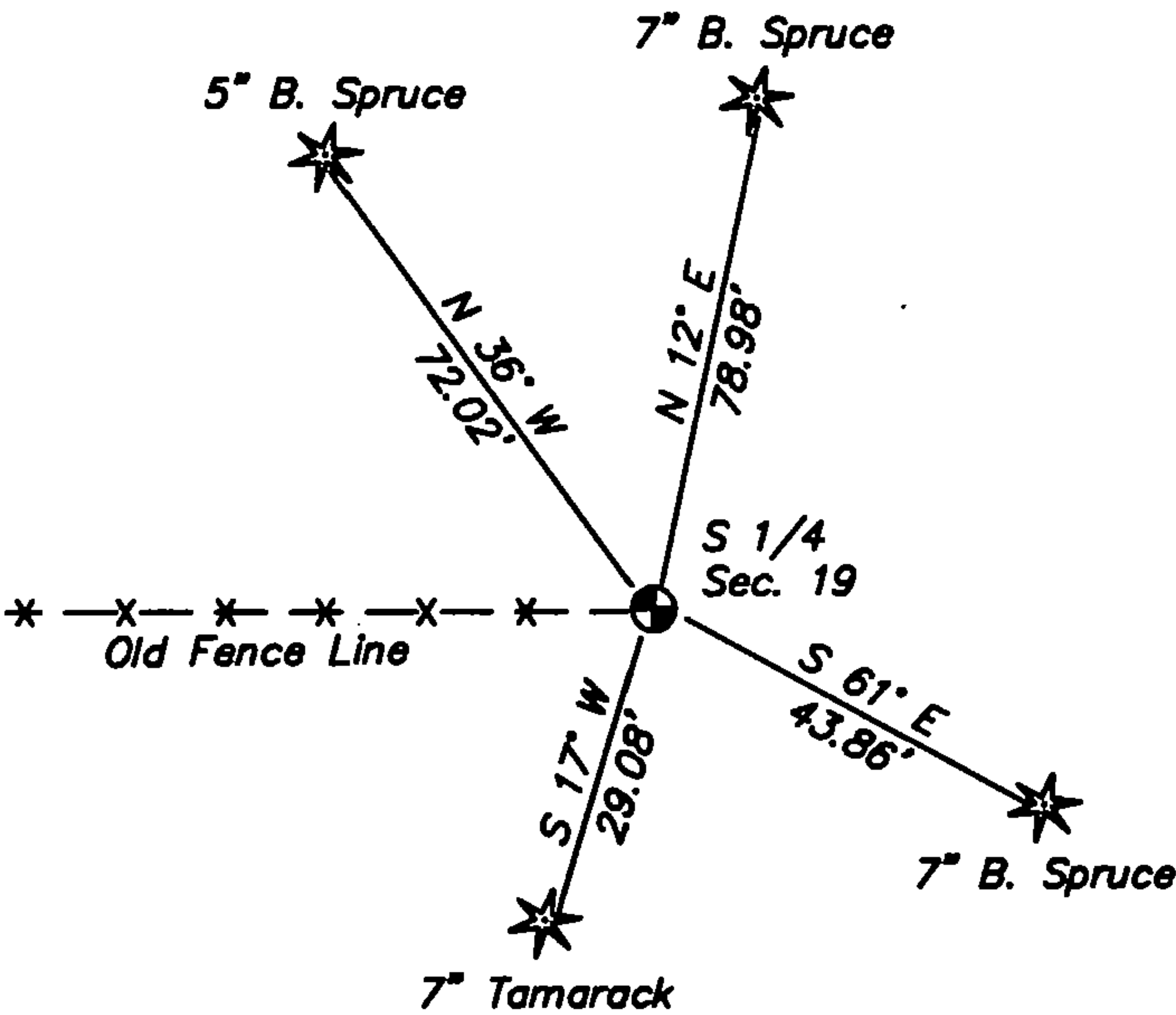
History of original corner establishment and subsequent restorations and descriptions of any record, monument, occupational, testimonial or other evidence considered:

- 1859 – William E. Daugherty, set original corner post and made the following B.T.'s:
Spruce, 6", N 09° W, 14 lks., 9.24 feet.
Spruce, 7", S 25° E, 13 lks., 8.58 feet.
- 2006 – I found no evidence of original corner. I found a 1" iron pipe on old fence line running West. I accepted iron pipe as the best available evidence of the true corner position. I replaced iron pipe with a 2" X 30" Forest County Aluminum Monument at this position.

- Corner was: (Check All That Apply)
- ☐ Restored through acceptance of an obliterated evidence location.
 - ☒ Restored through acceptance of a found perpetuated location.
 - ☐ Considered a lost corner and reestablished through lost corner proportionate methods (include a plan view drawing showing distances and directions to other Public Land Survey Corners used for proportioning and determining the corner location).
 - ☐ Restored or reestablished in a location that differs from a previous restoration or reestablishment (include a plan view drawing and indicate what was set and/or found).

Describe the monument and accessories used to perpetuate the location of this corner (include a plan view drawing and indicate what was set and/or found).

- LEGEND:
- ⊙ Set 2" X 30" Alu. Mon.
- Note: All distances are taken to nail in side of tree.



I, Michael A. Tremel, RLS
(type or print name) certify that the corner location shown on this record was determined by me or under my direction and control and that this U.S. Public Land Survey Monument Record is correct and complete to the best of my knowledge and belief.

Michael A. Tremel 11-25-06
Signature Date

The South Quarter corner of
Section 19 T. 36 N., R. 12 E.
Forest County, WI

Index No. R-3
2006