

Received for record this 9th day
of October A.D., 2002 at
9:00 o'clock A.M. and recorded
in Vol. Corner Restoration
page 49

Kay Swanson Deputy
Register of Deeds

Document Number

176969

U.S. PUBLIC LAND SURVEY MONUMENT RECORD

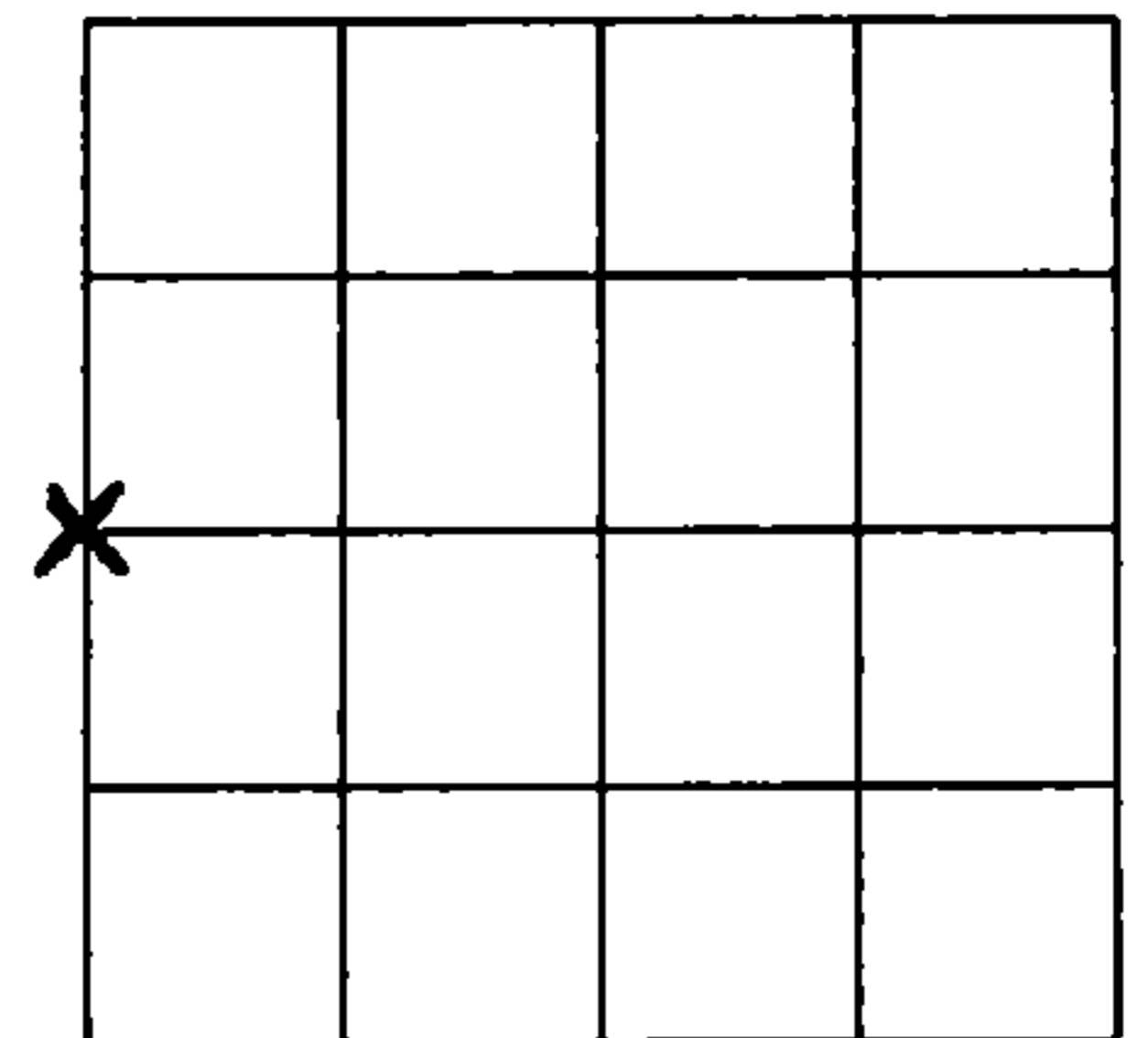
NOTE: This form is intended and designed to fulfill all requirements of Wisconsin Administrative Code, Chapter A-E 7.08 U.S. Public Land Survey Monument Record (3)(a)(b)(c)(d)(e)(f)(g)(h)(i). An additional sheet may be added if necessary to conform with said requirements.

(a) Corner location: Township 36 North

Range 12 East

Town of CRANDON

County, Wisconsin

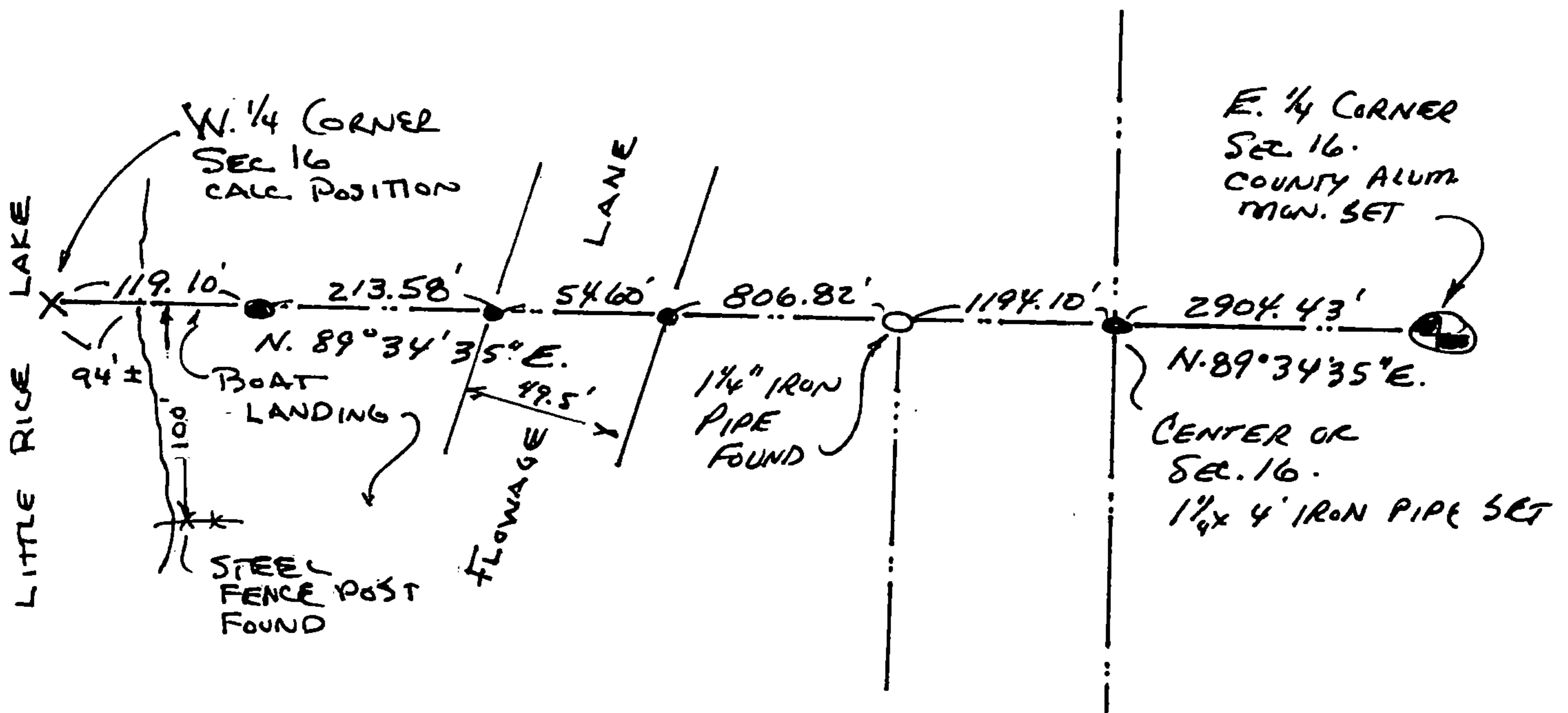


Section 16

(b)(f)(g)(h) Description of monument found at this corner and if it was accepted, state all evidence (material, testimonial, occupational, plats, records, other monuments) used as a basis for accepting. If not accepted or if nothing was found, state evidence used as basis for establishing location. If reestablished through lost corner proportionate methods, indicate all monuments, distances and directions used to establish. Indicate type of monument found or set and sign post.

- SEE BACK FOR DESCRIPTION -

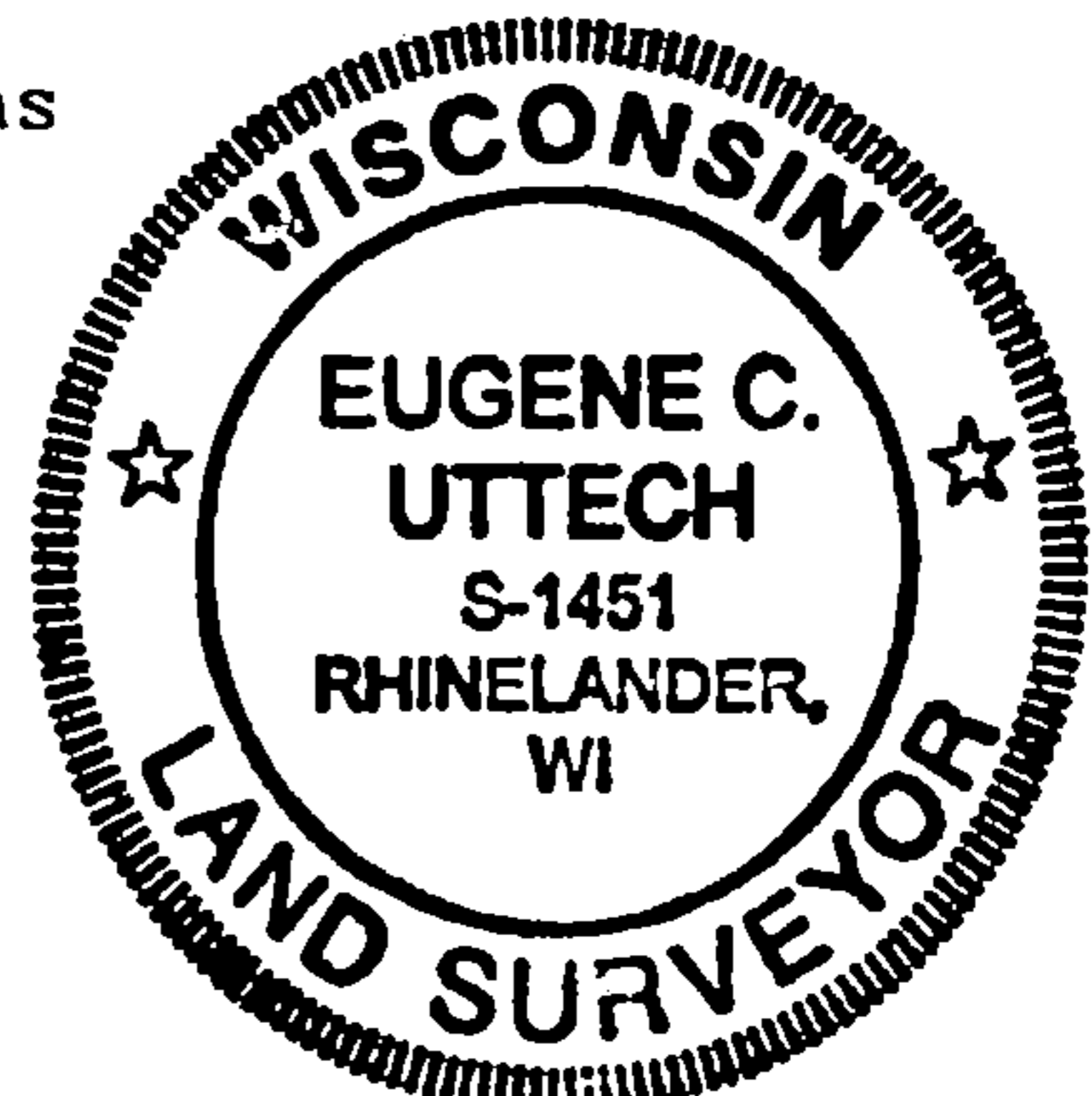
(c)(d)(e) Plan view of corner with ties to at least 4 witness monuments. If in disagreement with previously established corner, show the distances between the two corners and also indicate the ties to the disputed corner.



(i) I, Eugene C. Uttech, Registered Land Surveyor *S-1451, hereby certify that the corner location on this record was determined by me or under my direction and control and that this U.S. Public Land Survey Monument Record is correct and complete to the best of my knowledge and belief.

Eugene C. Uttech
Signature

SEPT. 27, 2002
Date



Index No. 19

176969

West 1/4 Corner Section 16-36-12

Researched records, Original corner established by Wm. E. Daugherty in August, 1859. Found field notes by A.J. Lytle, dated 7-19-1937 in the Oneida County Land Information Office for survey of Section 16. On 11-17-1937 Lytle referenced that he found one of the original bearing trees and the roots of the other bearing tree. Lytle also found old 3 spot line trees at least 50 years old indicating it to be the original North & South, West section line. Lytle then referenced that he set the Center of Section. Also found letter and old notes that the Department of Natural Resources surveyed the boat landing on Little Rice Lake around 1961. The landing is described as being the North 100 feet of the NW.1/4 of the SW.1/4 of Section 16. These notes referenced to iron stake at the Northeast corner of said NW.1/4 of the SW.1/4. At site we found 1 1/4" dia. pipe with 10' extension at the Northeast corner of said NW.1/4 of the SW.1/4. Extension was broke off but 1 1/4" iron pipe was in good shape. I measured to East 1/4 corner of Section 16 and was 0.58' short of distance called for by Lytle and the DNR. To set the West 1/4 corner, I extended a straight line from the East 1/4 corner, West, through the iron pipe found and held called distance of 1194.1 feet from said pipe to the West 1/4 corner. This position came in Little Rice Lake, about 94 feet from the shore line which also agreed with field notes by DNR for boat landing. I also found old fence post on shore of Little Rice Lake, which was 100 feet South of established East-West 1/4 line. I believe this also supported the East-West 1/4 line as established.