

Document Number

195689

REGISTER'S OFFICE
Forest County, Wis.

Received for record this 17th day
of October A.D., 2007 at
9:00 o'clock A.M. and recorded
in Vol. Corner Restoration
page N-9+10

Kay Swanson, Deputy
Register of Deeds

Project # 772

U.S. PUBLIC LAND SURVEY MONUMENT RECORD

NOTE: This form is intended and designed to fulfill all requirements of Wisconsin Administrative Code, Chapter A-E 7 .08 U.S. Public Land Survey Monument Record (3)(a)(b)(c)(d)(e)(f)(g)(h)(i). An additional sheet may be added if necessary to conform with said requirements.

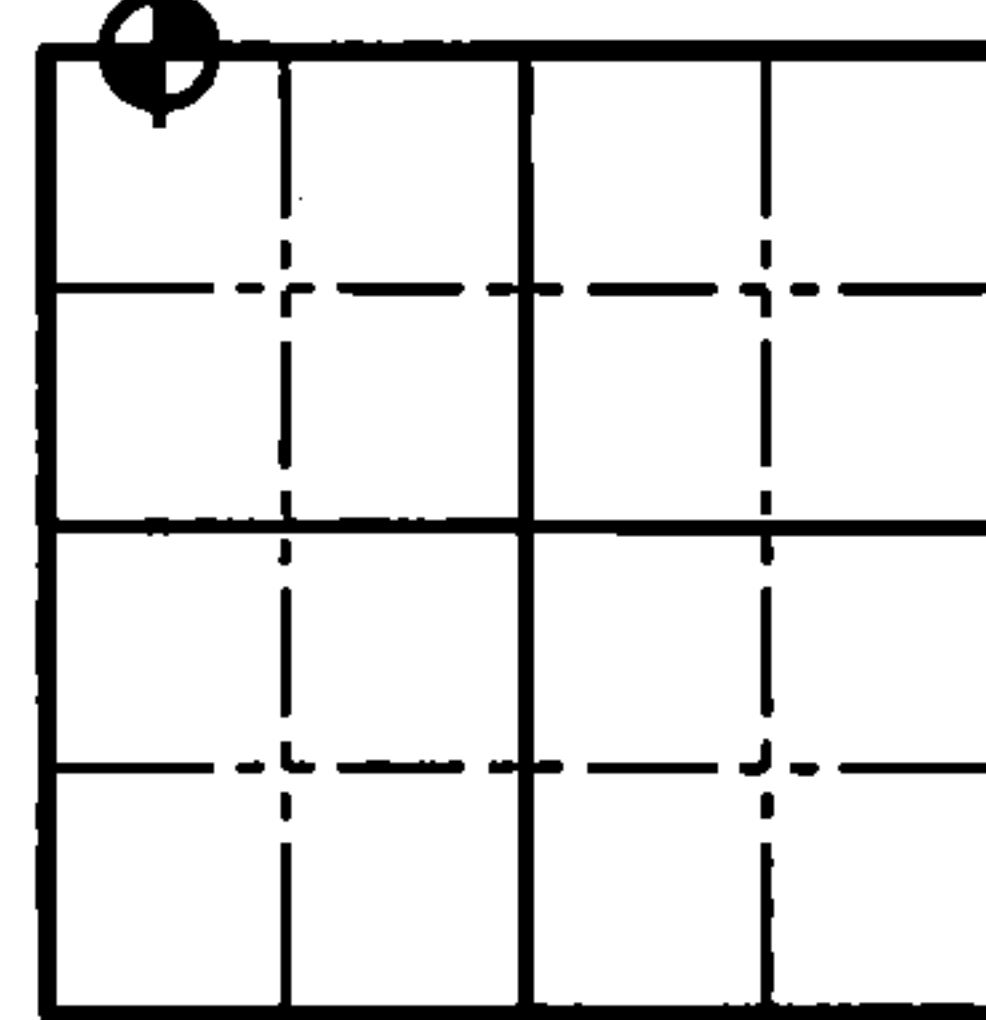
(a) Corner location: Township 36 North

Range 12 East

Town of Crandon

County of Forest

M.C. & Witness
to NW



Section 21

(b)(f)(g)(h) Description of monument found at this corner and if it was accepted, state all evidence (material, testimonial, occupation, plats, records, other monuments) used as a basis for accepting. If not accepted or if nothing was found, state evidence used as a basis for establishing location. If reestablished through lost corner proportionate methods, indicate all monuments, distances and directions used to establish. Indicate type of monument found or set and sign post.

May 10, 2002 - Eugene C. Uttech found an iron pipe at this location per his Plat of Survey, but did not show any dimensions to it. He shows the iron pipe on the Section line between Section 16 and 21.

February 28, 2007 - Matthew E. Hoglund found and accepted a 1-1/2" iron pipe near the Easterly right-of-way line of Flowage Lane per Plat of Survey by MSA Professional Services. We talking with Eugene C. Uttech and he said a land owner had shown him this corner and he had used this monument in reestablishing the Northwest Corner of Section 21. He extended a line from the North one-quarter corner of Section 21 through this monument using a record distance from A.J. Lytle in 1937 to reestablish the NW Corner of Section 21. (See Old Field Book Number 15, Page 37 Oneida County Land Information Office.) We set reference monuments as shown below.

(c)(d)(e) Plan view of corner with ties to at least 4 witness monuments. If in disagreement with previously established corner, show the distances between the two corners and also indicate the ties to the disputed corner.

Legend

△ Survey Nail Set - Stamped "SURVEY MARK"

○ 3/4" x 24" Iron Rebar Set
Weighing 1.50 lbs/lin ft.

⊕ 7/8" by 30" Iron Rebar Set W/Aluminum Cap
Weighing 2.044 lbs/lin ft.

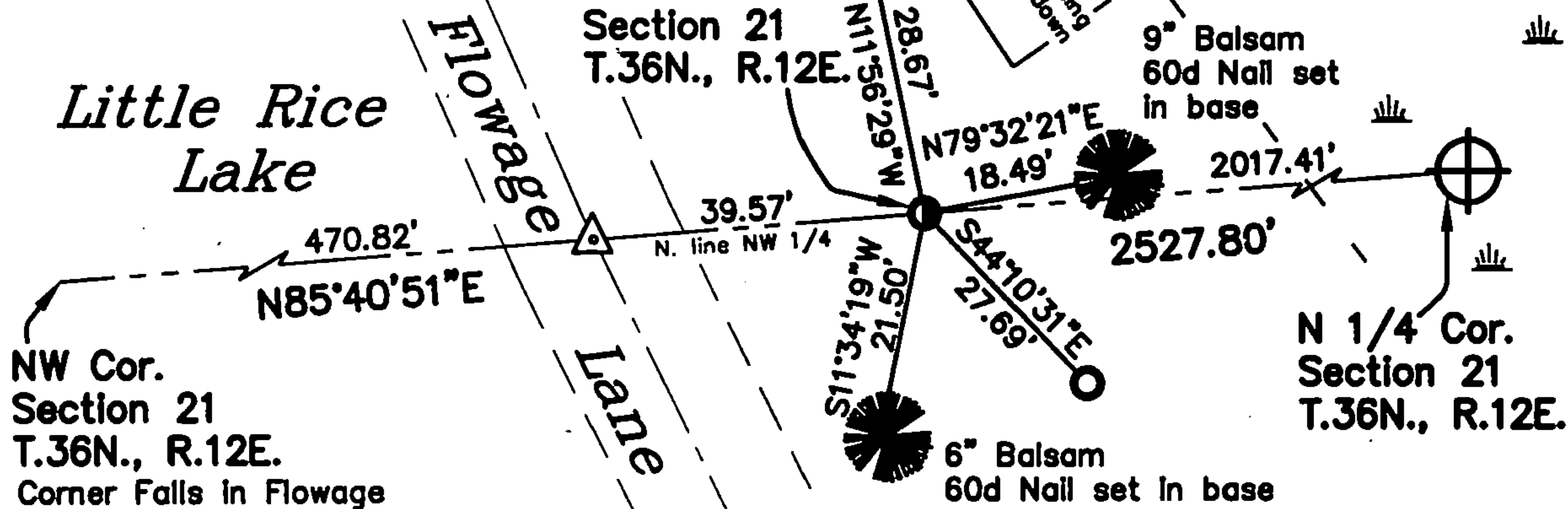
● 1-1/2" Iron Pipe Found

Note:

White T post set
1' East of corner



Scale: 1"=30'



(i) I, Matthew E. Hoglund, certify that the corner location on this record was determined by me under my direction and control and that this U.S. Public Land Survey Monument is correct and complete to the best of my knowledge and belief.

Signature Matthew E. Hoglund
Date 10/16/2007
MATTHEW E. HOGGLUND
S-1910
TOMAHAWK
WI
LAND SURVEYOR

4361216 0038

N-9,10