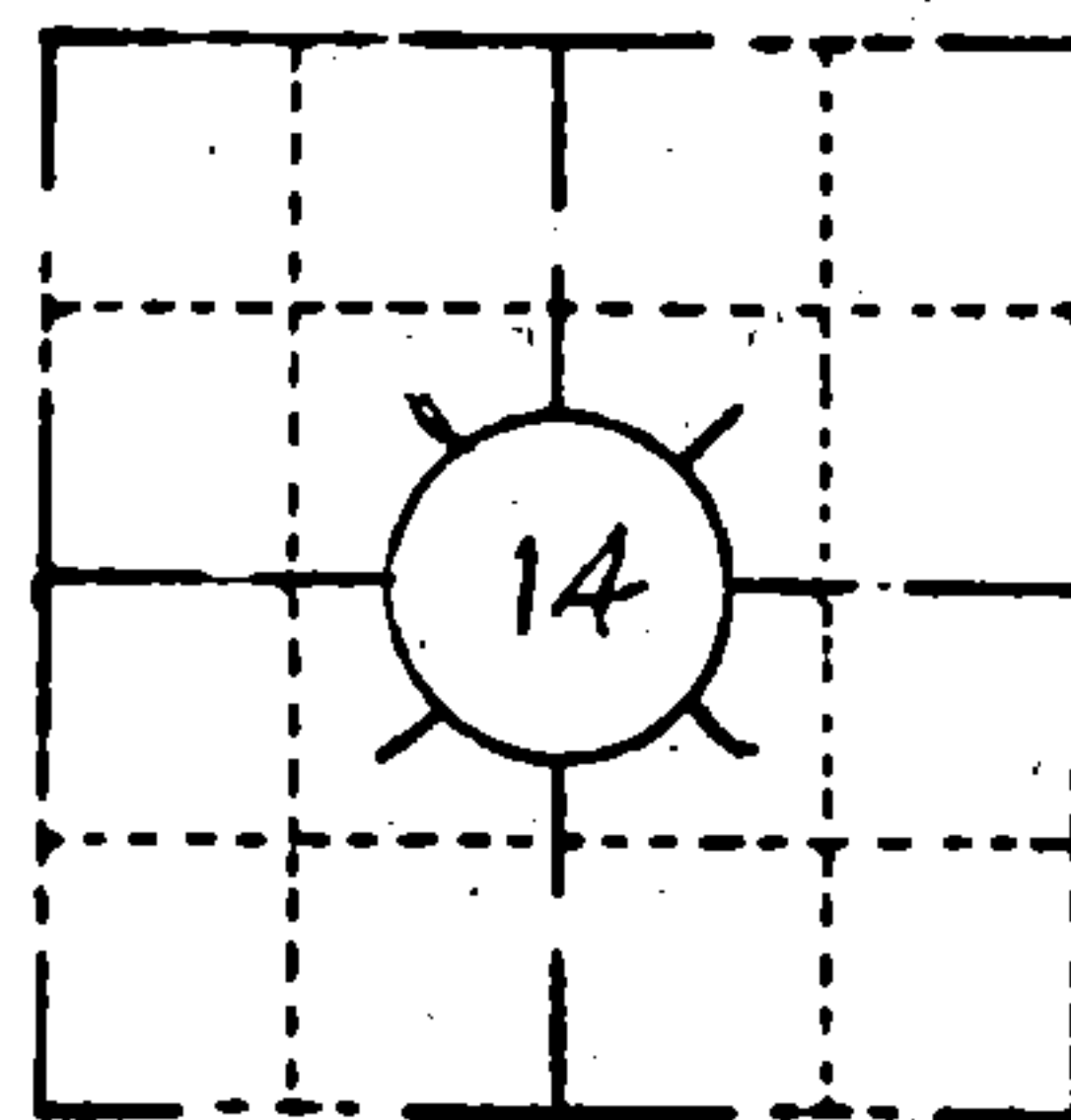


**ORIGINAL ON FILE IN CO CLERK'S OFFICE  
COPY HERE FOR REFERENCE**

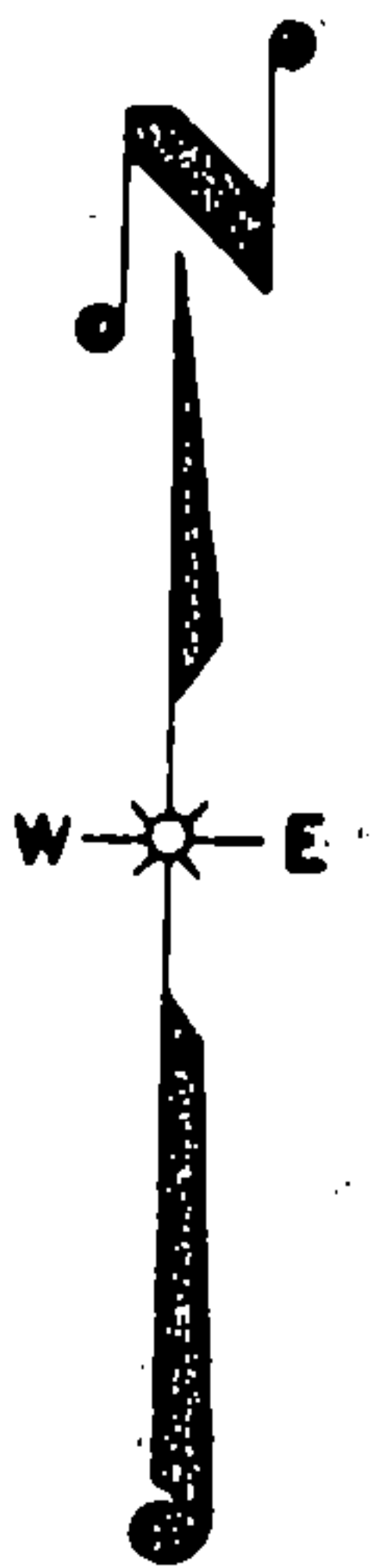
FIELD SURVEY NOTES  
**PRESERVATION OF LANDMARKS**  
(Pursuant to Section 59.635(7) Wisconsin Statutes)

Wisconsin Department of Transportation  
E-D-707.87

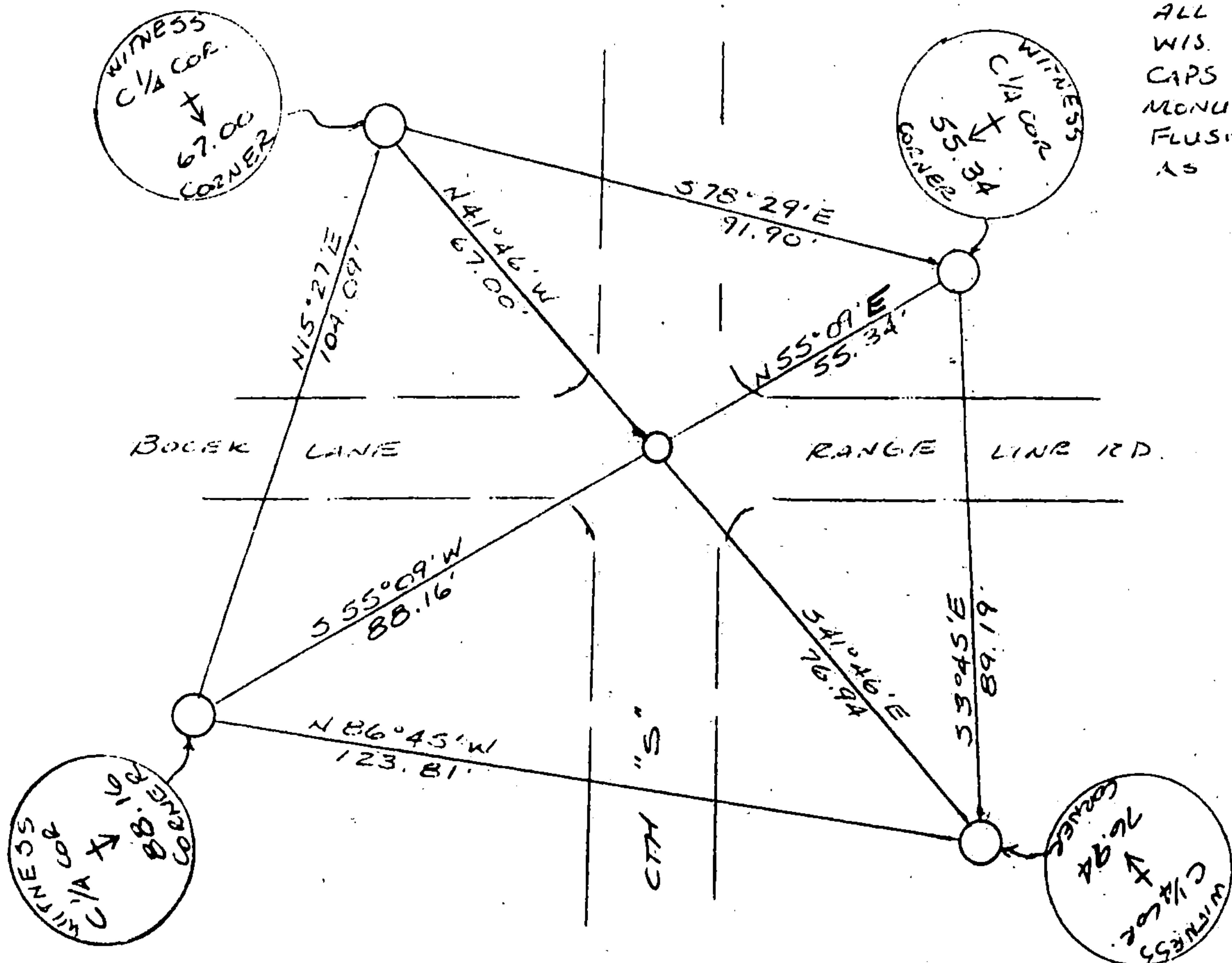
COUNTY <b>FOREST</b>		
TOWN <b>CRANDON</b>		
HIGHWAY <b>C.T.H. "S"</b>		
SECTION <b>14</b>	TOWNSHIP <b>36 N</b>	RANGE <b>12 E</b>
TYPE OF LANDMARK <b>PK NAIL</b>		



**LOCATION SKETCH**  
(Location of landmark indicated by "x")



This space for copy of field notes or ties to the above described landmarks



ALL WITNESSES ARE  
WIS. D.O.T. BRONZE  
CAPS IN CONCRETE  
MONUMENTS SET  
FLUSH & STAMPED  
AS SHOWN.

FILED UNDER PROJECT NUMBER <b>9339-04-70</b>			COUNTY CLERK'S OFFICE COUNTY OF <b>FOREST</b> WISCONSIN } SS	
SHC DISTRICT OFFICE NUMBER <b>7</b>	CITY <b>RHINELANDER</b>	COUNTY <b>ONEIDA</b>	DATE RECEIVED FOR RECORD <b>5-21-85</b>	DATE COPY SENT TO COUNTY SURVEYOR <b>N/A</b>
LOCATED OR ESTABLISHED BY NAME <b>JACK WALLIN</b> under the supervision of <b>R. Bonnville RLS 1328</b> TITLE <b>SURVEY CREW CHIEF</b> DATE <b>10-17-84</b>			SIGNATURE OF COUNTY CLERK <i>Dora C. James</i>	