

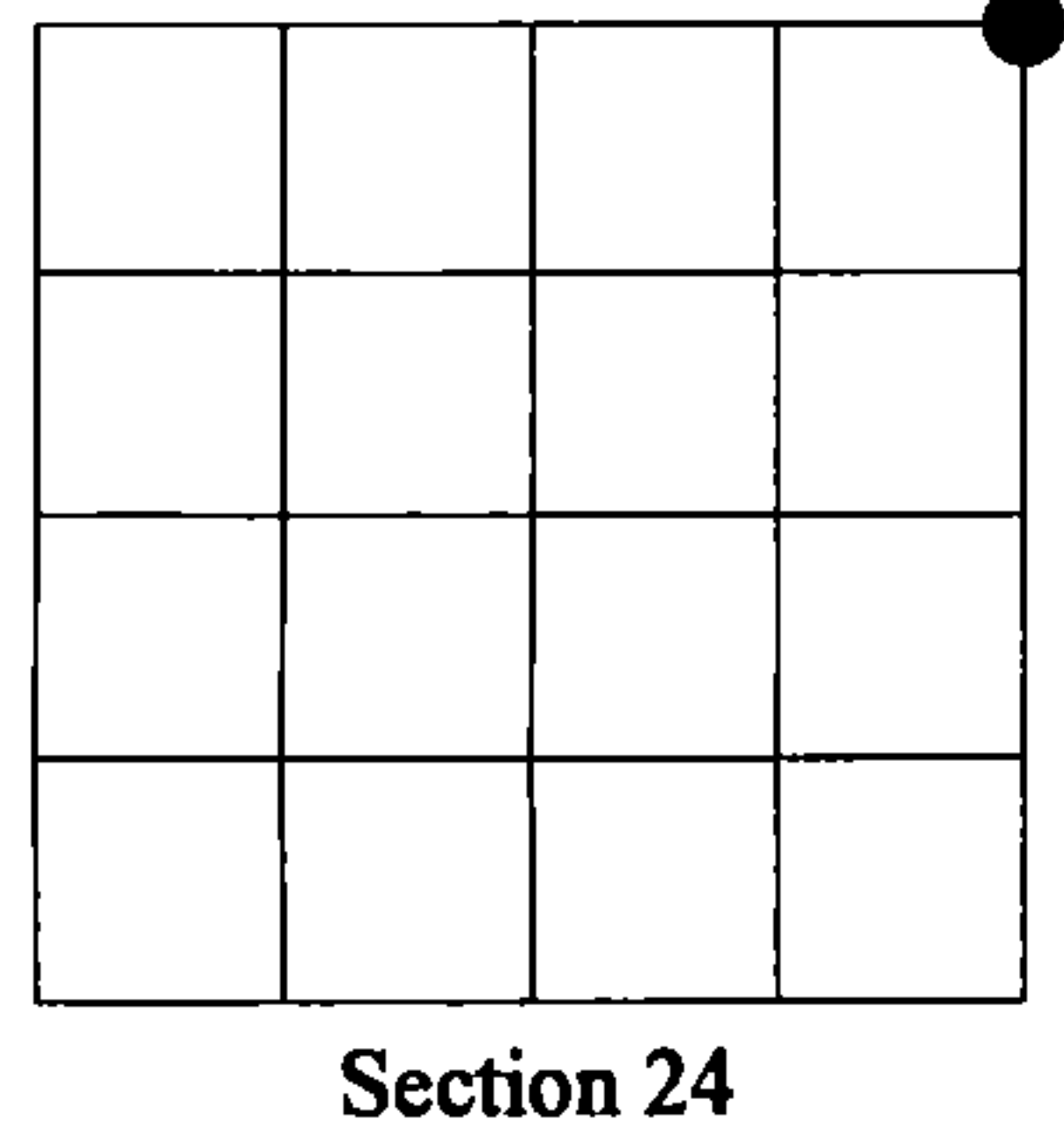
Document Number
202095

REGISTER'S OFFICE
Forest County, Wis.
Received for record this 20th day
of November A.D., 2009 at
9:00 o'clock A.M. and recorded
in Vol. Corner Restoration
page N-25
Kay Swanson, Deputy
Register of Deeds

U.S. PUBLIC LAND SURVEY MONUMENT RECORD

NOTE: This form is intended and designed to fulfill all requirements of Wisconsin Administrative Code, Chapter A-E 7.08 U.S. Public Land Survey Monument Record (3)(a)(b)(c)(d)(e)(f)(g)(h)(i). An additional sheet may be added if necessary to conform with said requirements.

(a) Corner location: Township 36 North
Range 12 East
Town of Crandon
Forest County, Wisconsin



(b)(f)(g)(h) Description of monument found at this corner and if it was accepted, state all evidence (material, testimonial, occupational, plats, records, other monuments) used as a basis for accepting. If not accepted or if nothing was found, state evidence used as basis for establishing location. If reestablished through lost corner proportionate methods, indicate all monuments, distances and directions used to establish. Indicate type of monument found or set and sign post.

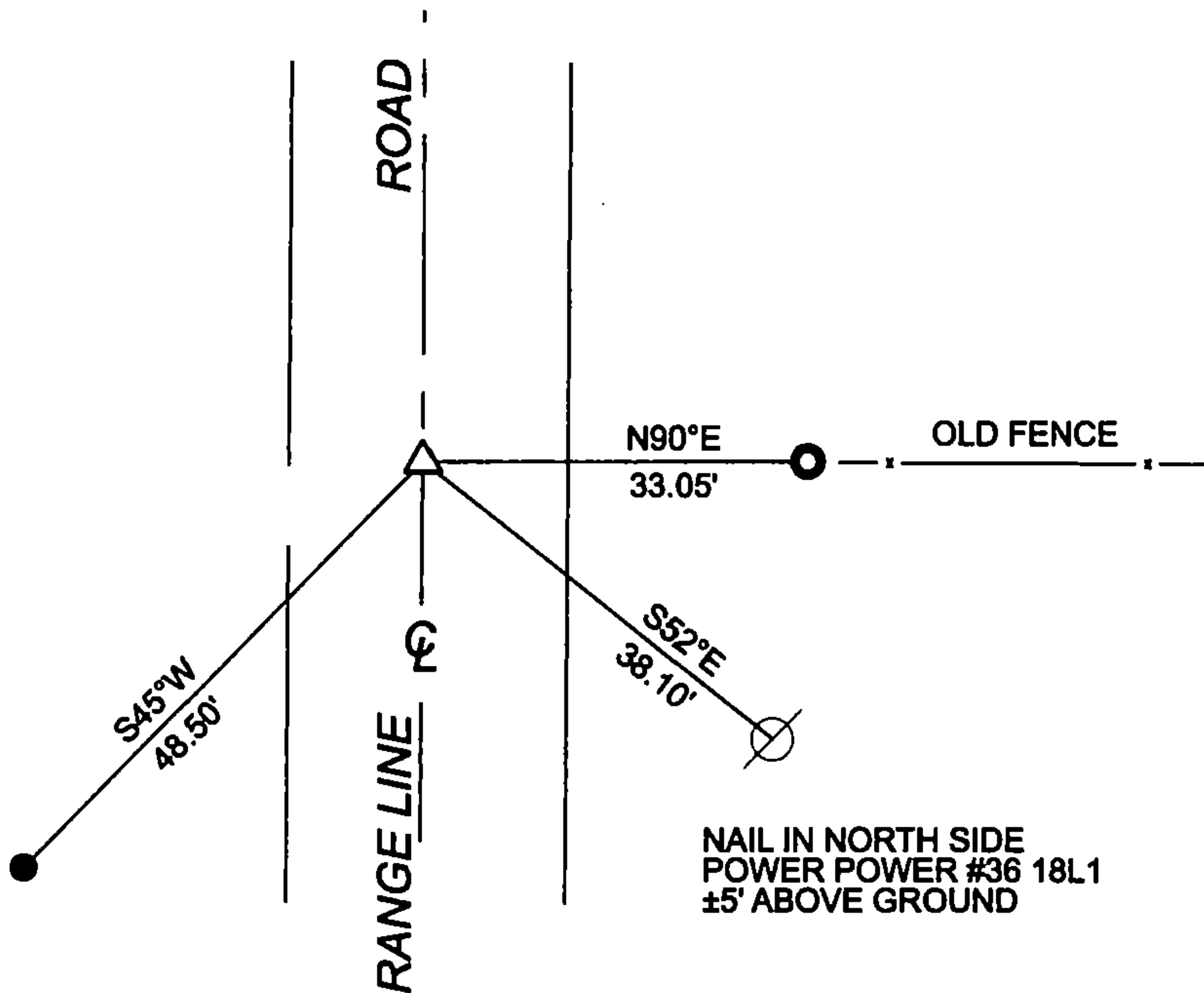
JUNE 1859 - ALFRED MILLARD SET POST COMMON TO SECTIONS
13 & 24, T36N, R12E AND 18 & 19, T36N, R13E AND MADE FOLLOWING BEARING TREES:
HEMLOCK 8", N20°E, 32 LINKS
Y. BIRCH 10", N60°W, 30 LINKS
ASPEN 15", S18°W, 27 LINKS
Y. BIRCH 10", S40°E, 34 LINKS

DECEMBER 2006 - EAGLE LANDMARK FOUND AND ACCEPTED RAILROAD SPIKE IN
CENTERLINE OF RANGE LINE ROAD.

FEBRUARY 2009 - MIKE TREML FOUND AND ACCEPTED RAILROAD SPIKE IN
CENTERLINE OF RANGE LINE ROAD.

NOVEMBER 2009 - I FOUND AND ACCEPTED RAILROAD SPIKE IN CENTERLINE OF
RANGE LINE ROAD THAT FIT THE DISTANCES SHOWN BY TREML AND EAGLE LANDMARK.
I SET WITNESSES AS REFERENCED BELOW.

(c)(d)(e) Plan view of corner with ties to at least 4 witness monuments. If in disagreement with previously established corner, show the distances between the two corners and also indicate the ties to the disputed corner.



- △ RAILROAD SPIKE, FOUND
- 3" IP, FOUND
- 5/8" DIA. BY 24" LONG IR, SET
±1' EAST OLD FENCE POST

(i) I, Jeffrey L DeMuth, Registered Land Surveyor #S-2656, hereby certify that the corner location on this record was determined by me or under my direction and control and that this U.S. Public Land Survey Monument Record is correct and complete to the best of my knowledge and belief.

Signature: [Signature] Date: 11/19/2009



Index No.

N-25

43612130000