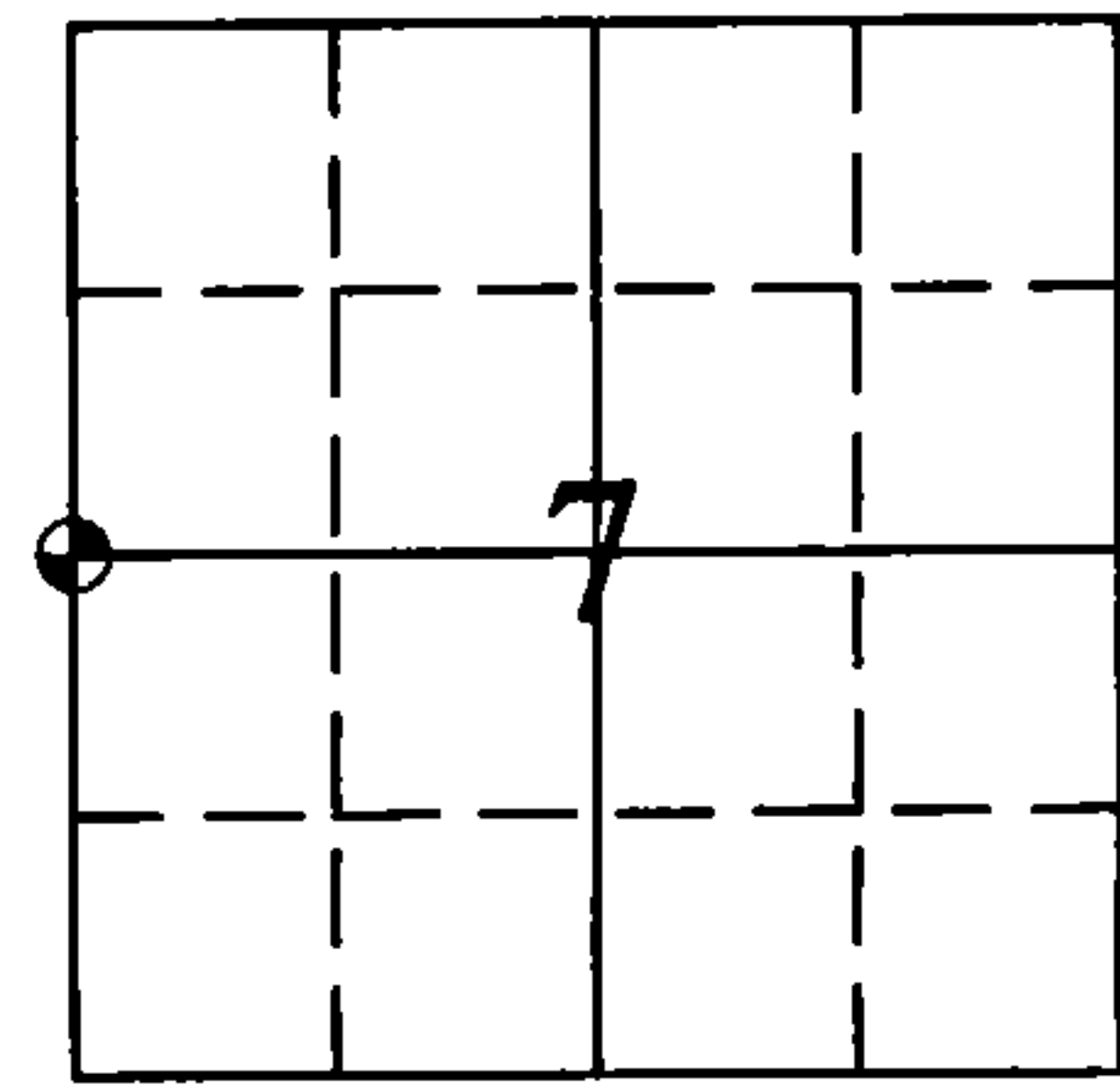


REGISTER'S OFFICE
Forest County, Wis.
Received for record this 24th day
of July A.D., 2015 at
4:15 o'clock P.M. and recorded
in Vol. Corner Restoration
page 91
Erica K. Deaton, Deputy
Register of Deeds

U.S. PUBLIC LAND SURVEY MONUMENTATION RECORD

(AS REQUIRED BY S. A-E 7.08, WI ADM. CODE)

CORNER: WEST 1/4 INDEX NUMBER: G-1
SECTION: 7 TOWNSHIP: T36N RANGE: R13E
TOWN/CITY/VILLAGE: TOWN OF LINCOLN
COUNTY: FOREST STATE: WISCONSIN



⊕ = CORNER LOCATION

HISTORY OF ORIGINAL CORNER ESTABLISHMENT AND SUBSEQUENT RESTORATIONS AND DESCRIPTION OF ANY RECORD, MONUMENT, OCCUPATIONAL, TESTIMONIAL, OR OTHER EVIDENCE CONSIDERED:

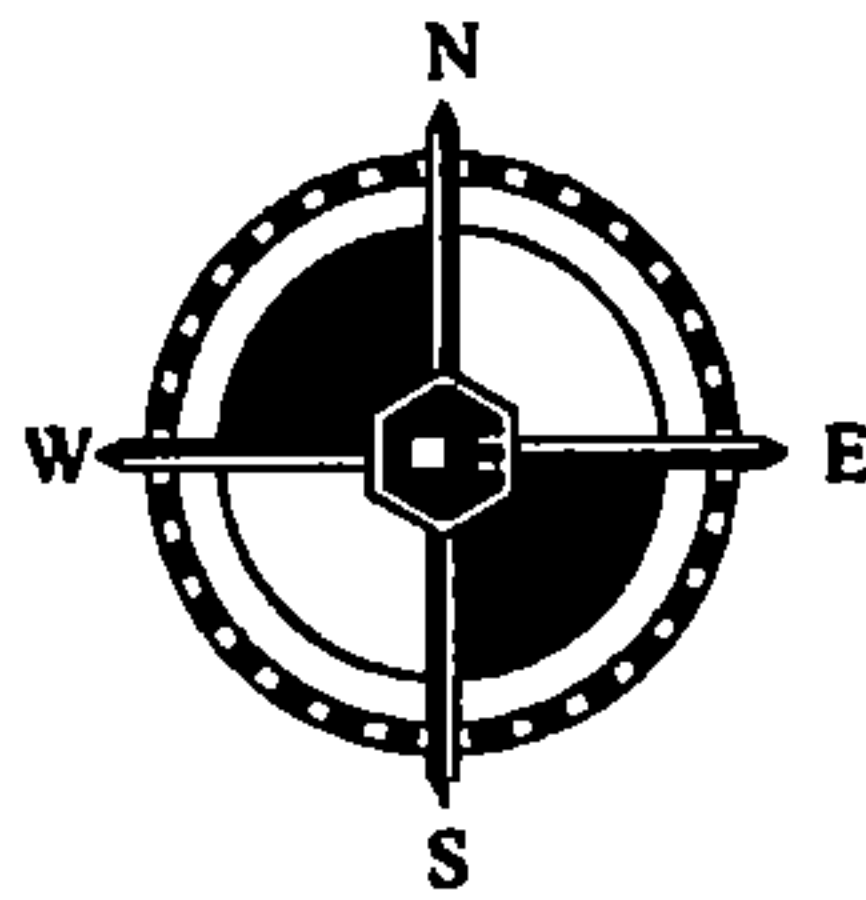
1858: ALFRED MILLARD, SET 1/4 SECTION POST
9" TAMARACK N 72°E 22 LINKS
5" TAMARACK S 33°W 35 LINKS

CORNER WAS: (CHECK ALL THAT APPLY)

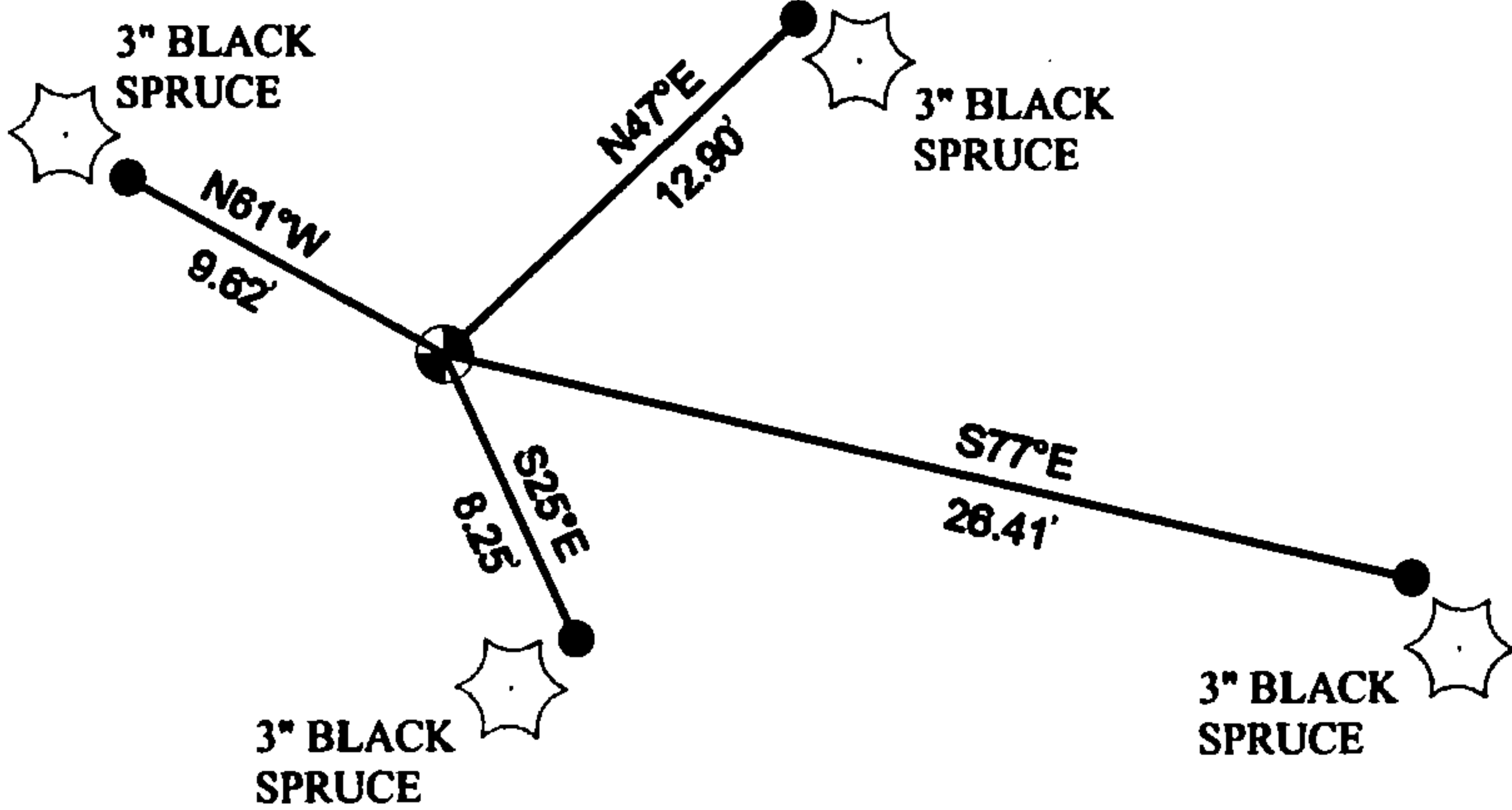
- RESTORED THROUGH ACCEPTANCE OF AN OBLITERATED LOCATION
- RESTORED THROUGH ACCEPTANCE OF A FOUND PERPETUATED LOCATION
- RESTORED OR REESTABLISHED IN A LOCATION THAT DIFFERS FROM A PREVIOUS RESTORATION OR REESTABLISHMENT (INCLUDE A PLAN VIEW DRAWING AND INDICATE WHAT WAS SET AND/OR FOUND)
- CONSIDERED A LOST CORNER AND REESTABLISHED THROUGH LOST CORNER PROPORTIONATE METHODS (INCLUDE A PLAN VIEW DRAWING SHOWING DISTANCES AND DIRECTIONS TO OTHER PUBLIC LAND SURVEY CORNERS USED FOR PROPORTIONING AND DETERMINING THE CORNER LOCATION)

LEGEND

- ⊕ = SET 3" x 5" STAMPED ALUM. MONUMENT
- = SET 5/8" REBAR W/ CEC CAP



SCALE 1" = 10'



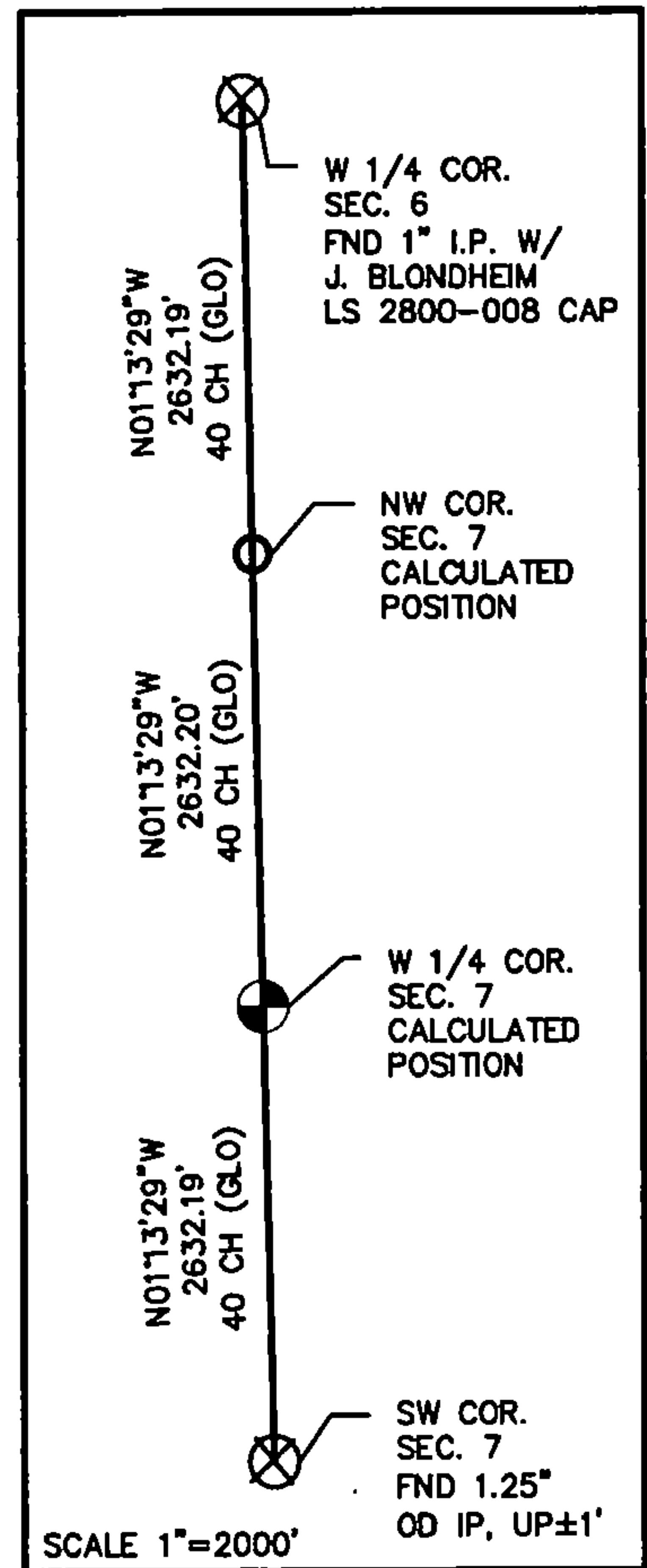
DESCRIBE THE MONUMENT AND ACCESSORIES USED TO PERPETUATE THE LOCATION OF THIS CORNER. (INCLUDE A PLAN VIEW DRAWING AND INDICATE WHAT WAS SET AND/OR FOUND)

CASEY J. PRIES PLS# S-3065, SET 3" x 5" STAMPED ALUMINUM MONUMENT USING SINGLE PROPORTIONATE METHODS.

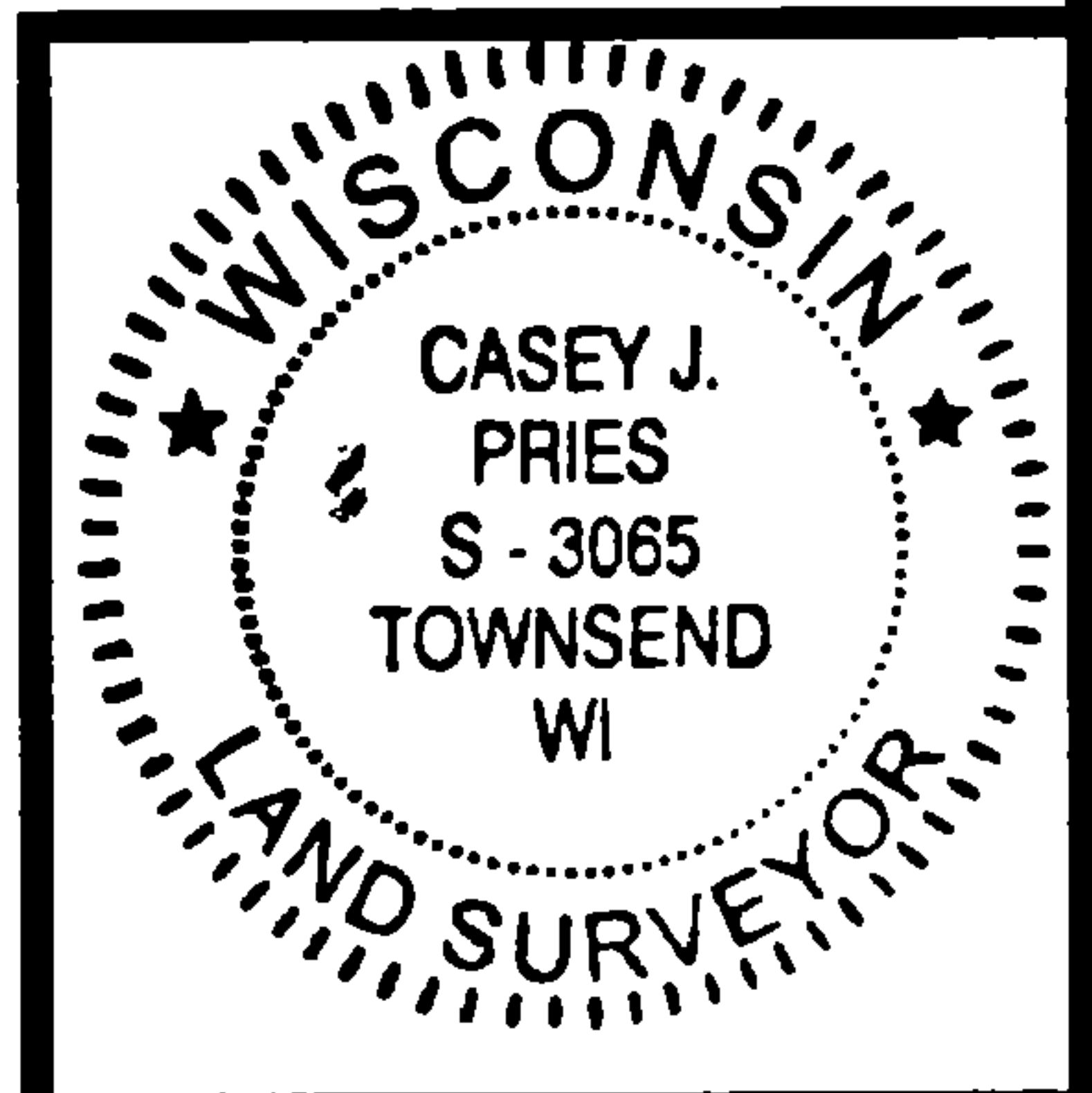
SET THE FOLLOWING WITNESSES:

5/8" REBAR W/ CEC CAP 0.3' NW OF 3" BLACK SPRUCE	N47°E	12.90'
5/8" REBAR W/ CEC CAP 0.5' NW OF 3" BLACK SPRUCE	S77°E	26.41'
5/8" REBAR W/ CEC CAP 0.3' NE OF 3" BLACK SPRUCE	S25°E	8.25'
5/8" REBAR W/ CEC CAP 0.3' SE OF 3" BLACK SPRUCE	N61°W	9.62'

NOTE: ALL WITNESS TREES HAVE CHEST AND STUMP BLAZES. DISTANCES ARE MEASURED TO 5/8" REBAR WITH CEC CONTROL CAP.



SCALE 1" = 2000'



SIGNATURE: *Casey Pries* DATE: 7-24-15

Index No. G-1

I, CASEY J. PRIES PLS S-3065
CERTIFY THAT THE CORNER LOCATION SHOWN ON THIS ABOVE RECORD WAS DETERMINED BY ME OR UNDER MY DIRECTION AND CONTROL AND THAT THIS U.S. PUBLIC LAND SURVEY MONUMENT RECORD IS CORRECT AND COMPLETE TO THE BEST OF MY KNOWLEDGE AND BELIEF.



COLEMAN ENGINEERING COMPANY
635 CIRCLE DRIVE, IRON MOUNTAIN, MI 49801
PHONE: (906) 774-3440 FAX: (906) 774-7776

DRAWN: MJT FB 430, PG:79 DATE: 7/24/15 JOB NO. 15127-B