

REGISTER'S OFFICE
 Forest County, Wis.
 Received for record this 9th day
 of October A.D., 2002 at
9:00 o'clock A.M. and recorded
 in Vol. Corner Restoration
 page J15
Ray Swanson, Deputy
 Register of Deeds

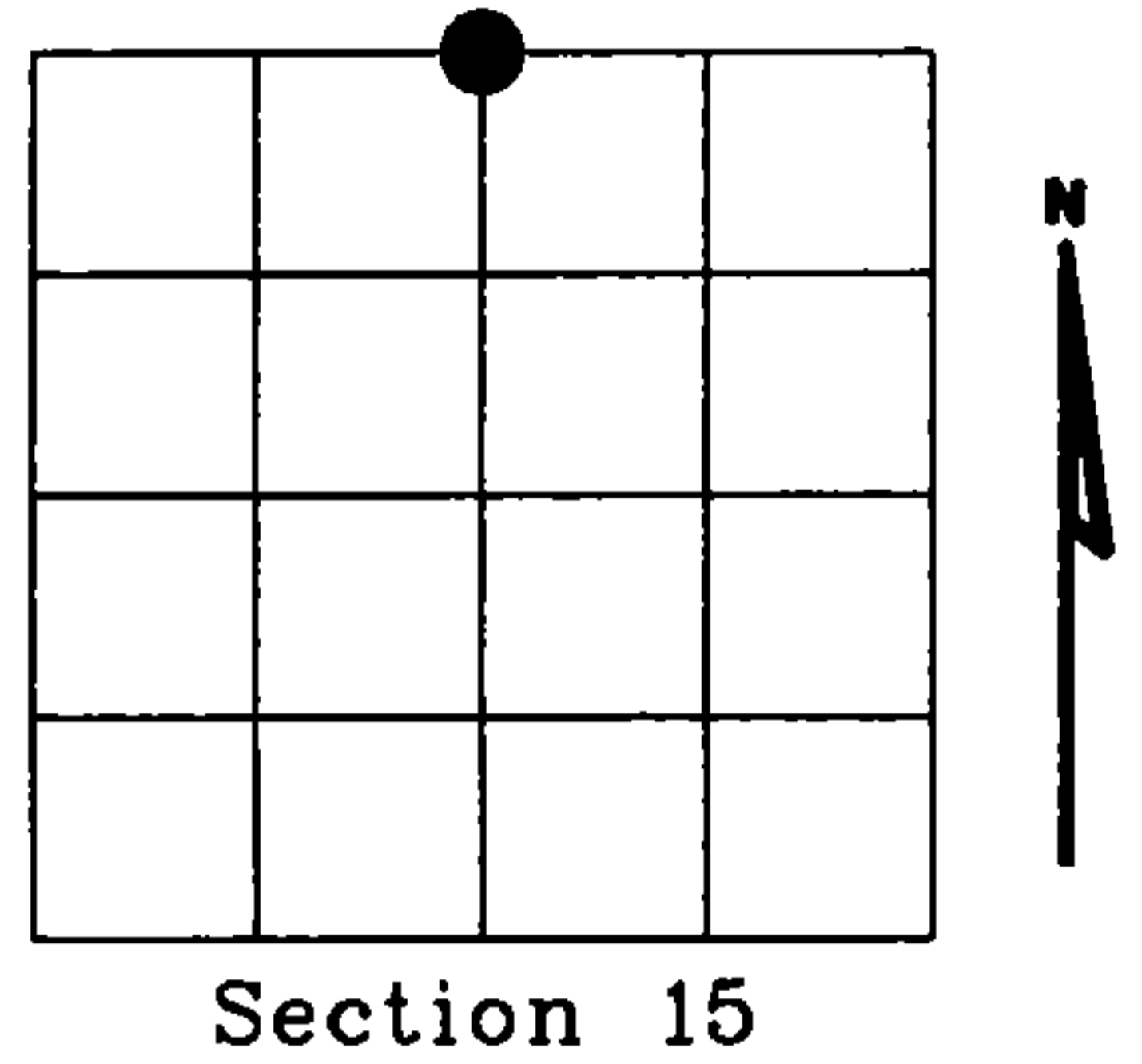
Document Number

176967

U.S. PUBLIC LAND SURVEY MONUMENT RECORD

NOTE: This form is intended and designed to fulfill all requirements of Wisconsin Administrative Code, Chapter A-E 7.08 U.S. Public Land Survey Monument Record (3)(a)(b)(c)(d)(e)(f)(g)(h)(i). An additional sheet may be added if necessary to conform with said requirements.

(a) Corner location: Township 36 North
 Range 12 East
 Town of CRANDON
 FOREST County, Wisconsin

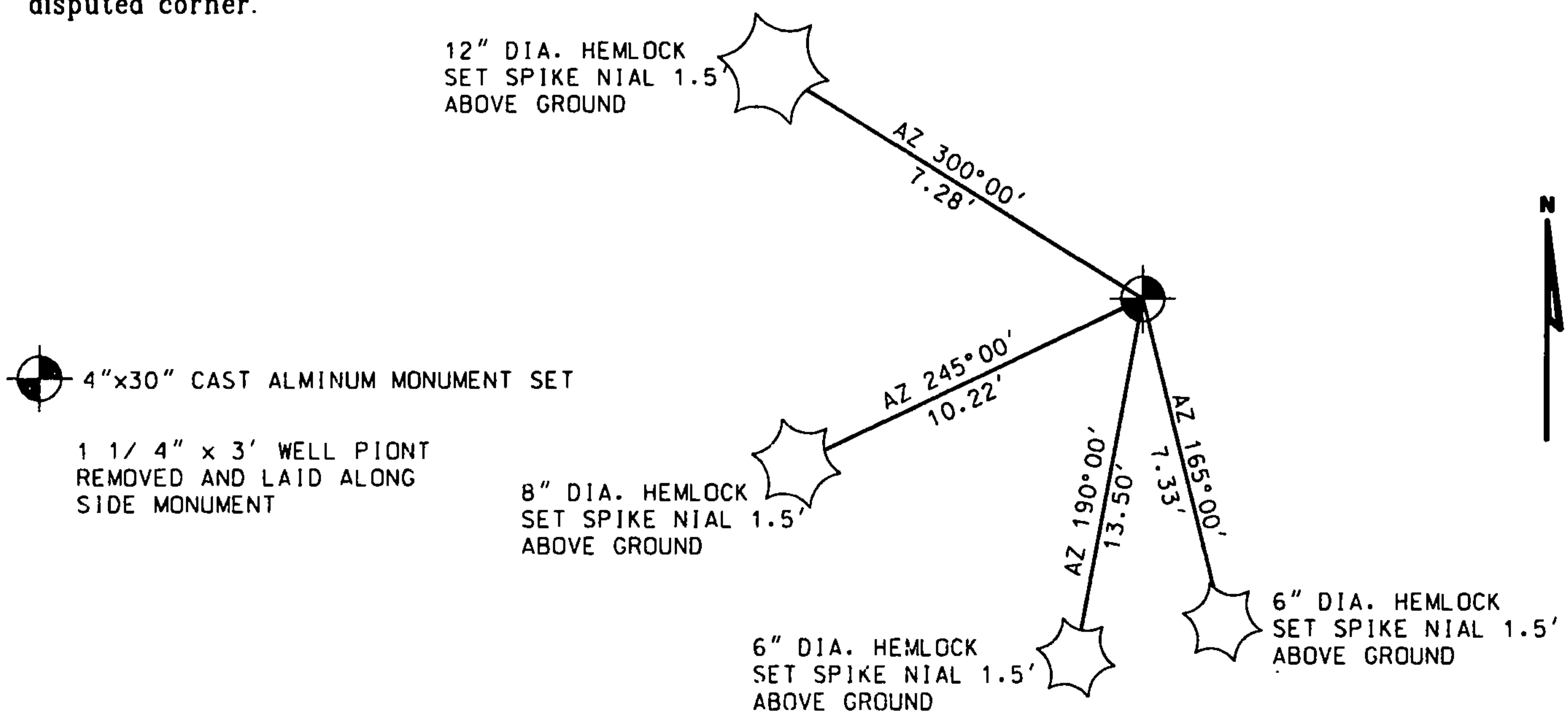


Section 15

(b)(f)(g)(h) Description of monument found at this corner and if it was accepted, state all evidence (material, testimonial, occupational, plats, records, other monuments) used as a basis for accepting. If not accepted or if nothing was found, state evidence used as basis for establishing location. If reestablished through lost corner proportionate methods, indicate all monuments, distances and directions used to establish. Indicate type of monument found or set and sign post.

Researched records, Original corner established by Wm. E. Daugherty in August, 1859. Area had been logged and original bearing trees are gone. Neighboring owners, the Cottrell's showed us a 1 1/4" dia. iron pipe at this 1/4 corner. Could find no other information on this corner. I took measurements to existing evidence and accepted the iron pipe as the 1/4 corner and replace with a 4" x 30" standard county monument.

(c)(d)(e) Plan view of corner with ties to at least 4 witness monuments. If in disagreement with previously established corner, show the distances between the two corners and also indicate the ties to the disputed corner.



(i) I, Eugene C. Uttech, Registered Land Surveyor *S-1451, hereby certify that the corner location on this record was determined by me or under my direction and control and that this U.S. Public Land Survey Monument Record is correct and complete to the best of my knowledge and belief.

Eugene C. Uttech SEPT. 27, 2002
 Signature Date



Index No. J15

43612100020