

REGISTER'S OFFICE
 Forest County, Wis.
 Received for record this 9th day
 of October A.D., 2002 at
9:00 o'clock A.M. and recorded
 in Vol. Corner Restoration
 page J11

Document Number

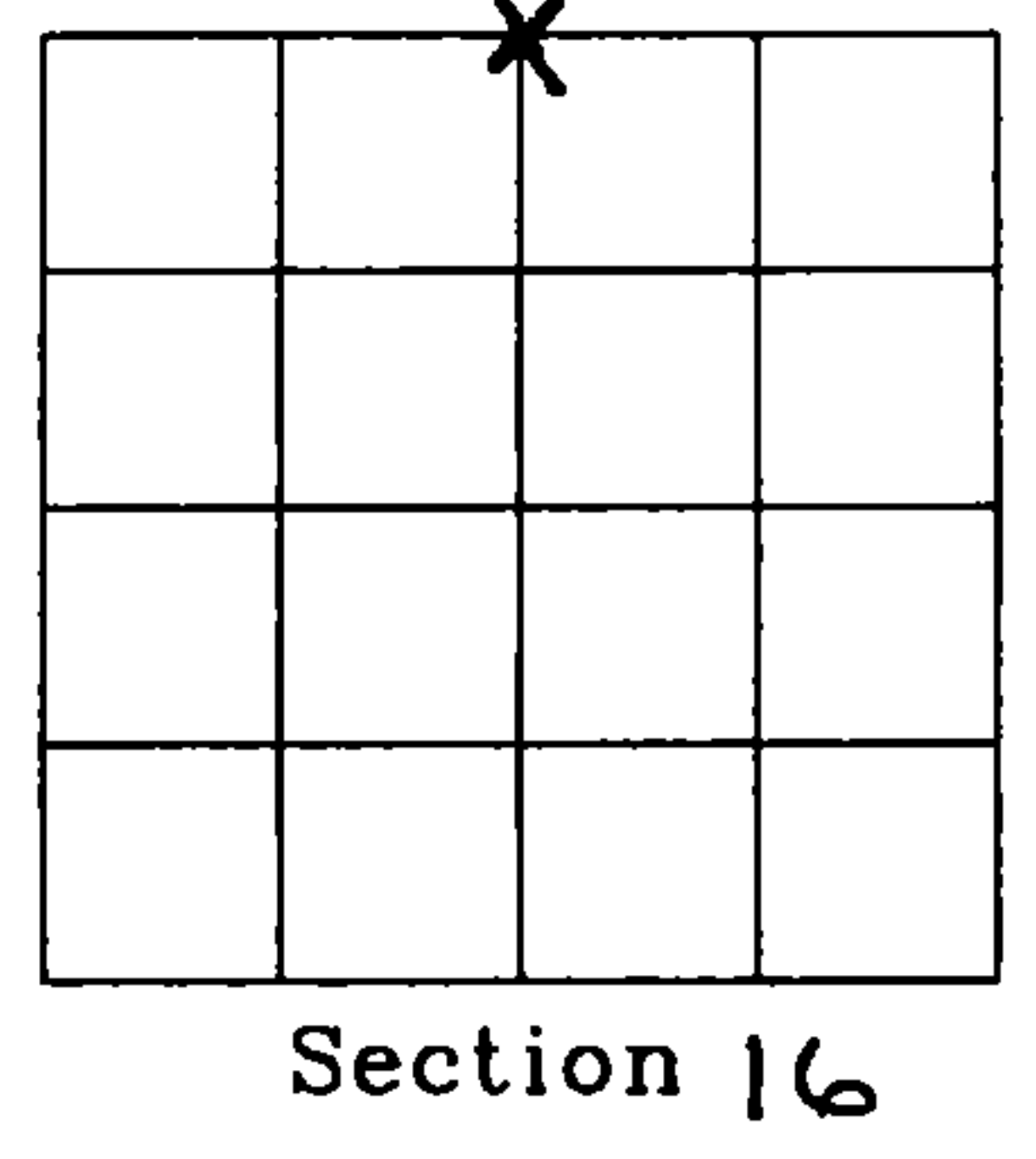
176965

Kay Swanson, Deputy
 Register of Deeds

U.S. PUBLIC LAND SURVEY MONUMENT RECORD

NOTE: This form is intended and designed to fulfill all requirements of Wisconsin Administrative Code, Chapter A-E 7.08 U.S. Public Land Survey Monument Record (3)(a)(b)(c)(d)(e)(f)(g)(h)(i). An additional sheet may be added if necessary to conform with said requirements.

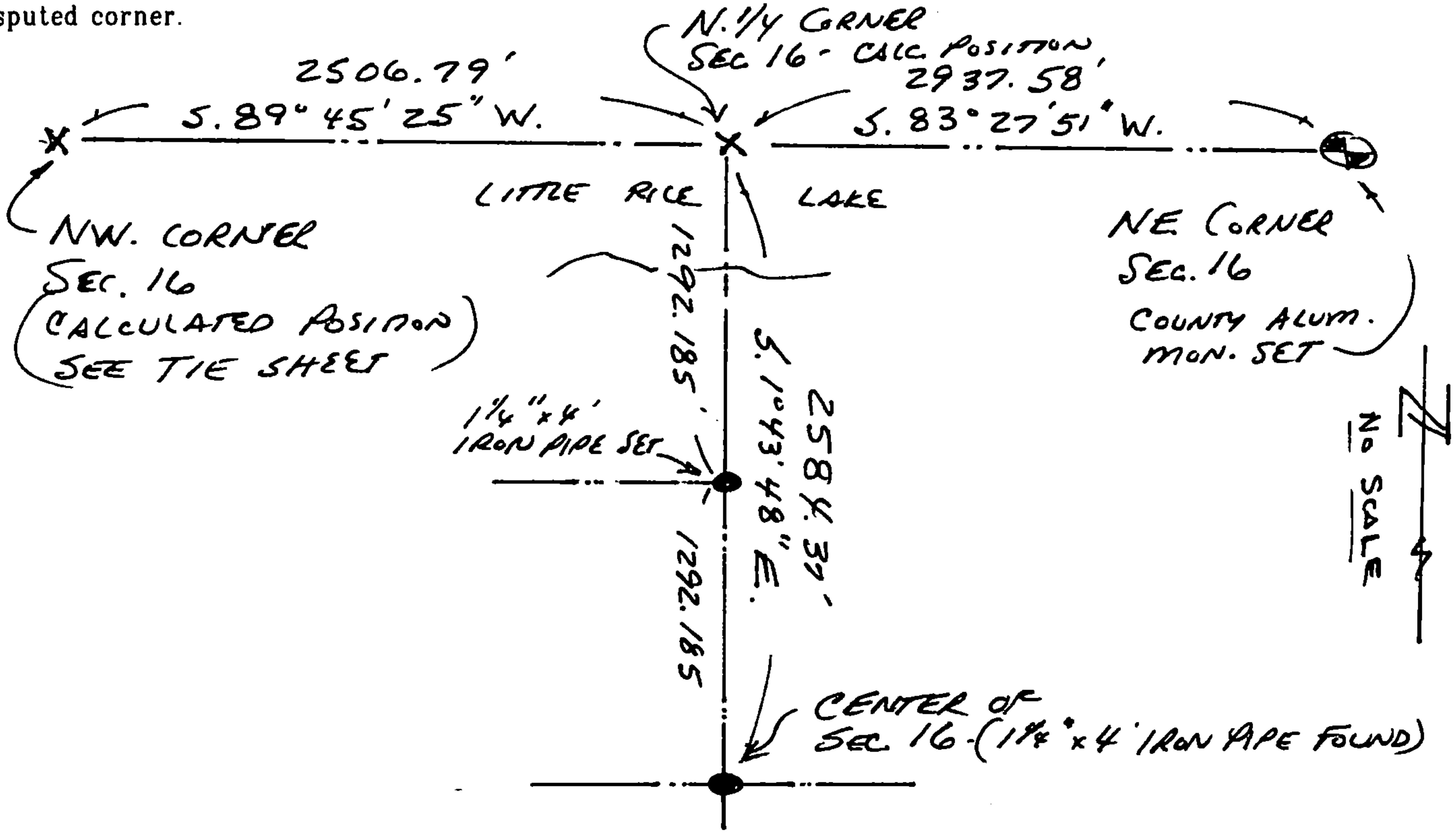
(a) Corner location: Township 36 North
 Range 12 East
 Town of CRANDON
 County, Wisconsin



(b)(f)(g)(h) Description of monument found at this corner and if it was accepted, state all evidence (material, testimonial, occupational, plats, records, other monuments) used as a basis for accepting. If not accepted or if nothing was found, state evidence used as basis for establishing location. If reestablished through lost corner proportionate methods, indicate all monuments, distances and directions used to establish. Indicate type of monument found or set and sign post.

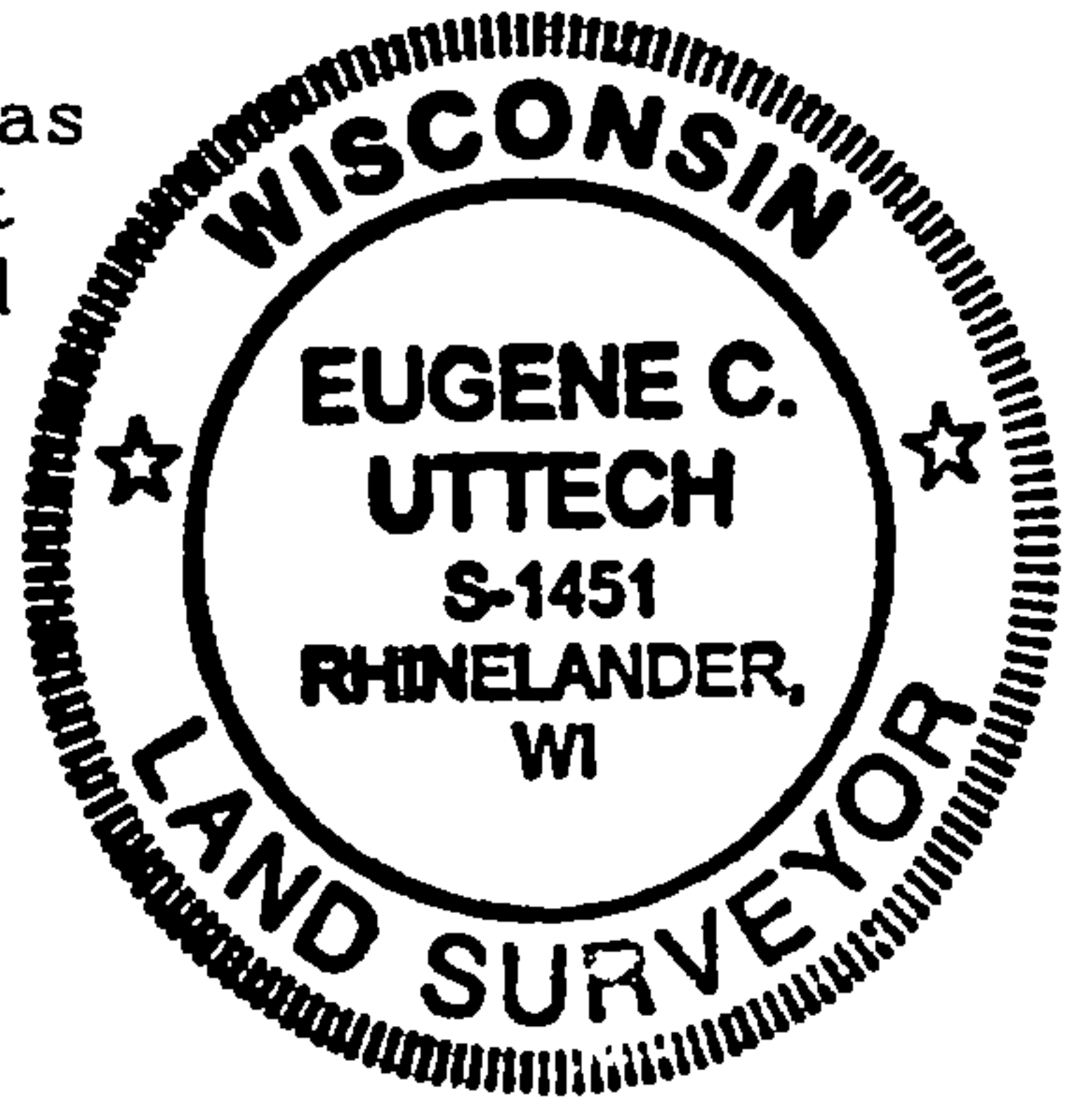
Researched records, Original corner established by Wm. E. Daugherty in August, 1859. Found field notes by A.J. Lytle, dated 7-19-1937 in the Oneida County Land Information Office for survey of Section 16. Lytle referenced that he found original bearing trees down and rotted. He checked course distances and they were ok. Lytle also referenced that he had good evidence on line going East and West with ax marks on several down trees. Around 1937 a dam was built on the South end of Little Rice Lake. At this time the area around the North 1/4 corner is under water. I reestablished this corner by retracing the Lytle survey. I extended a straight line from the South 1/4 corner, North, through a iron pipe found at the Center of Section 16 (see Center of Section 16 information sheet) and held called distance by Lytle from the Center of Section to the North 1/4 corner.

(c)(d)(e) Plan view of corner with ties to at least 4 witness monuments. If in disagreement with previously established corner, show the distances between the two corners and also indicate the ties to the disputed corner.



(i) I, Eugene C. Uttech, Registered Land Surveyor *S-1451, hereby certify that the corner location on this record was determined by me or under my direction and control and that this U.S. Public Land Survey Monument Record is correct and complete to the best of my knowledge and belief.

Eugene C. Uttech
 Signature
SEPT. 27, 2002
 Date



Index No. J11

43012090020