

U.S. PUBLIC LAND SURVEY MONUMENT RECORD

Instructions: This record shall show the location of the corner and shall include all of the following nine elements (a through i).

(a) Identify the corner by reference to the U.S. public land survey system.

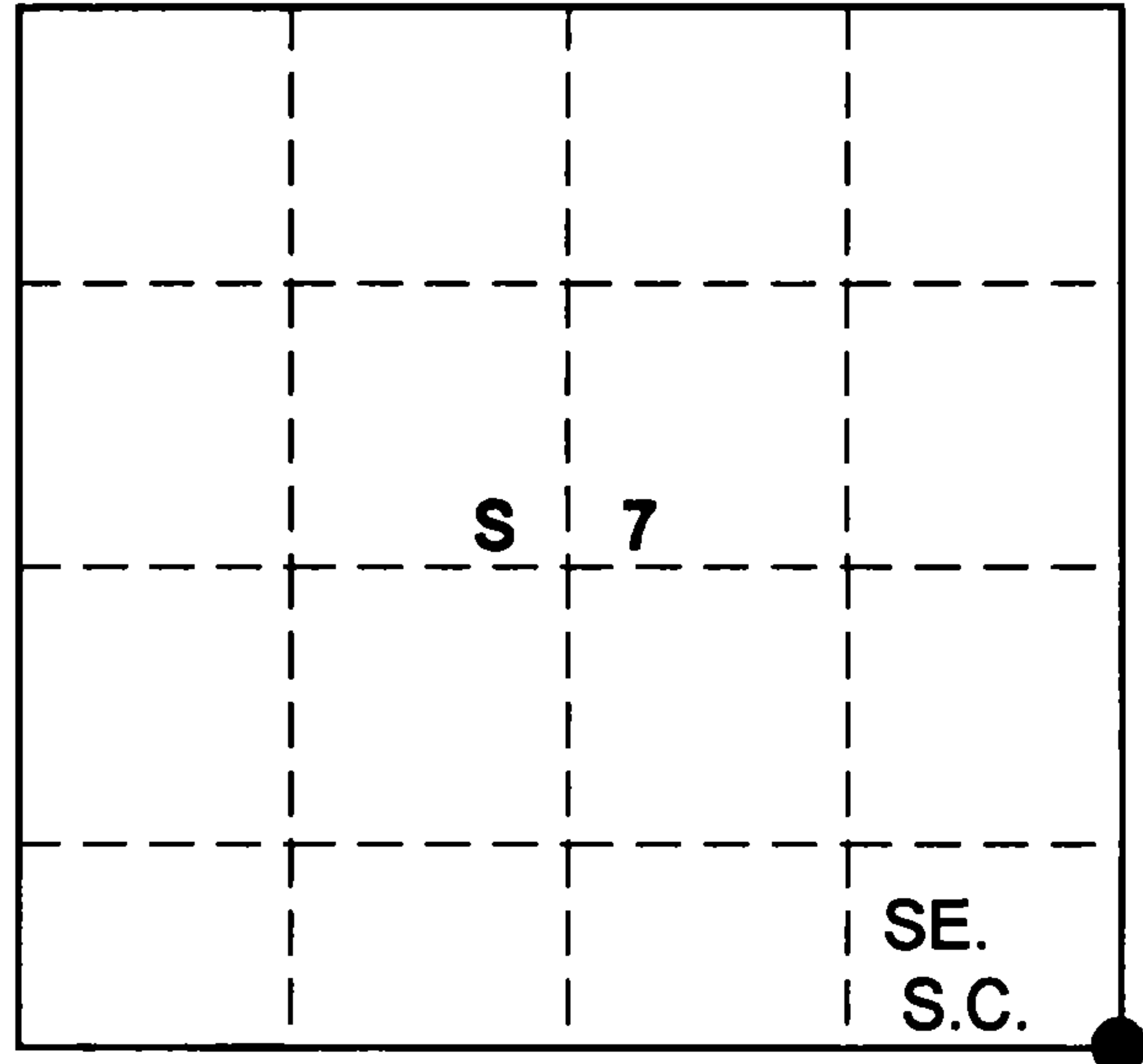
○ = Corner monument restored.

SE-S.C. Corner

Sec. 7, T 36 N, R 12 E

Type of Monument:

2-1/4" Aluminum Pipe 3-1/4" Alloy Cap
8" above ground



FOREST COUNTY

(b) Describe any record evidence, monument evidence, occupational evidence, testimonial evidence or any other material evidence you considered, and whether the monument was found or placed.

Recovered an old 1-1/2" well point with a 1-3/4" coupling projecting 6" above ground.
Well point sets beside old fence post with fences running north, south and east.

Wallace Yocum a life time adjoining land owner of 80 years stated to me J.R. Ritter a county surveyor established the corner in 1938. In later years Mr. Yocum set the well point to perpetuate the corner position. No records of Ritters to indicate if he found original evidence or reestablished it in some other manner.

(c) In the plan view drawing below, provide reference ties to at least 4 witness monuments, or, if the location is within a municipality, to at least 2 witness monuments. (Witness monuments shall be made of concrete, natural stone, iron or other equally durable material).

Describe witness monuments:

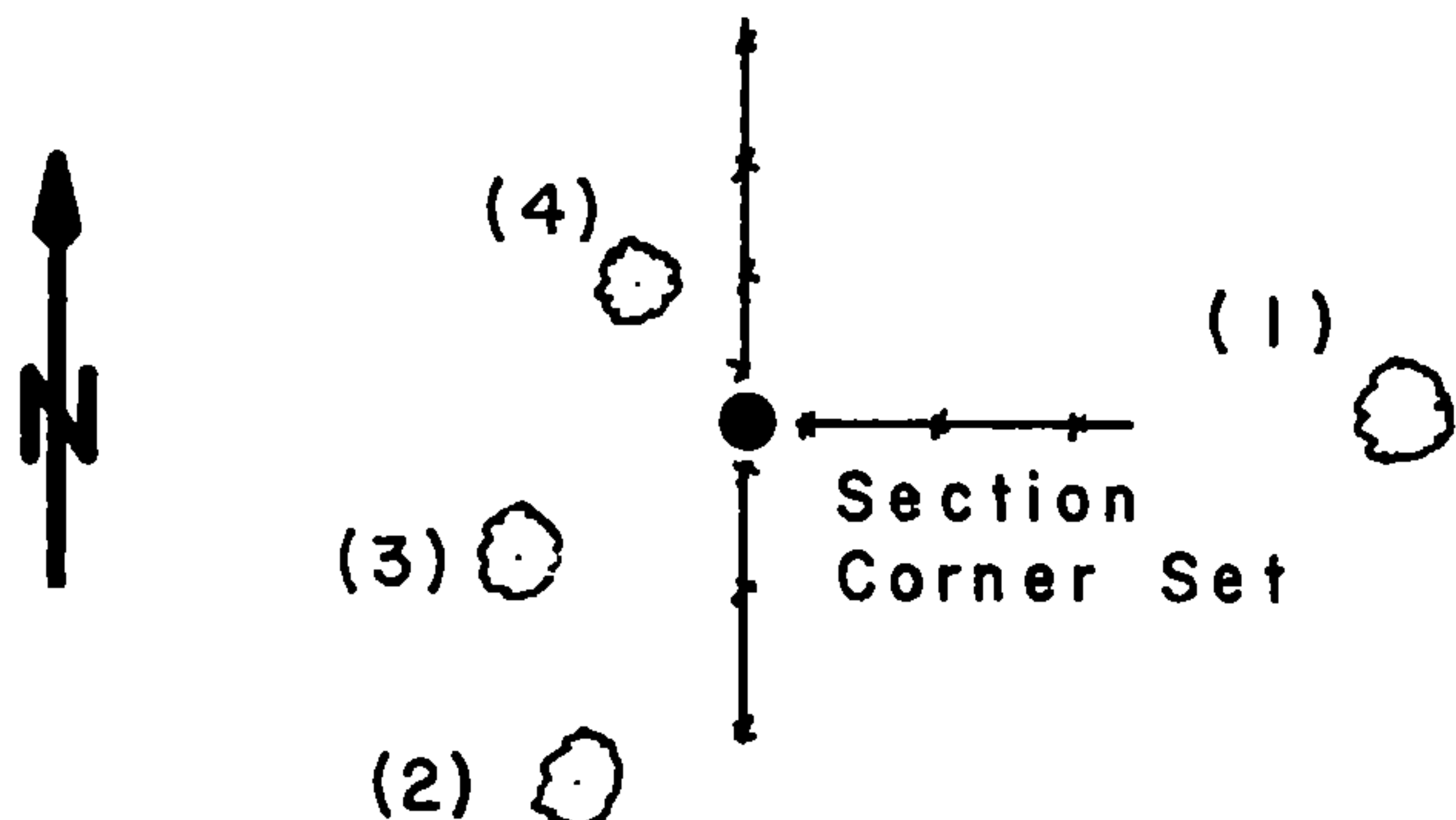
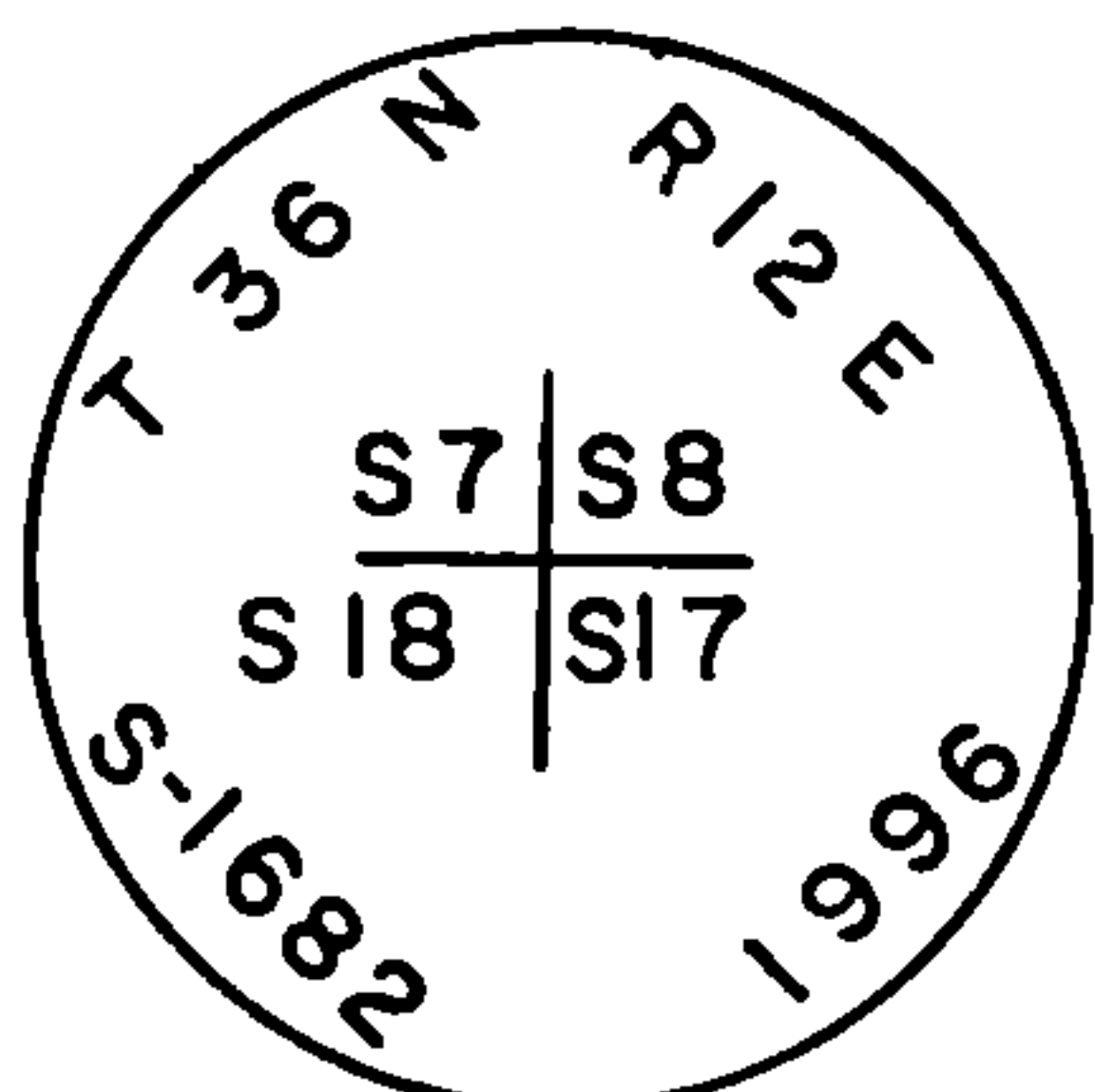
(d) Show a plan view drawing depicting the relevant monuments and reference ties which is sufficient in detail to enable

accurate relocation of the corner monument if the corner monument is disturbed. Indicate north.

Marked New Bearing Trees

- (1) 6" Red Maple N87E 29.32'
- (2) 8" Red Maple S24W 16.93'
- (3) 8" Sugar Maple S60W 11.26'
- (4) 7" Sugar Maple N39W 7.53'

Monument Set
6" above ground



County File No. _____

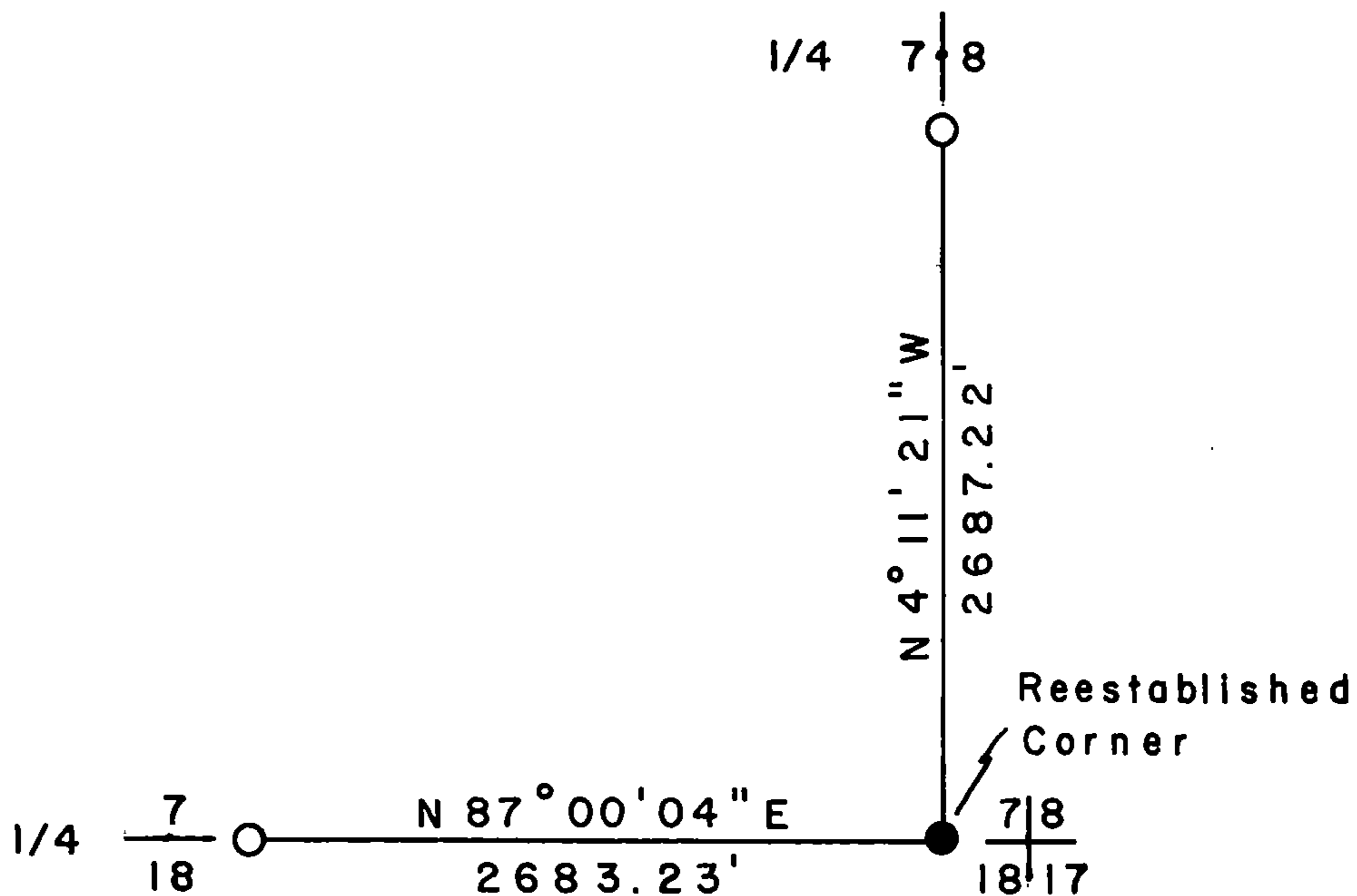
43612070000

(e) Describe an material discrepancy between the location of the corner as restored or reestablished and the location of that corner as previously restored or reestablished by distance and direction. Show the discrepancy on the plan view drawing under (d), above. Show the distances between the corner as previously restored or reestablished and (1) the corner as restored or reestablished, and (2) to at least 2 of the witness monuments shown on the drawing in (d), above.

(f) Was the corner restored through acceptance of (1) an obliterated evidence location, or, (2) a found perpetuated location?

Perpetuated location

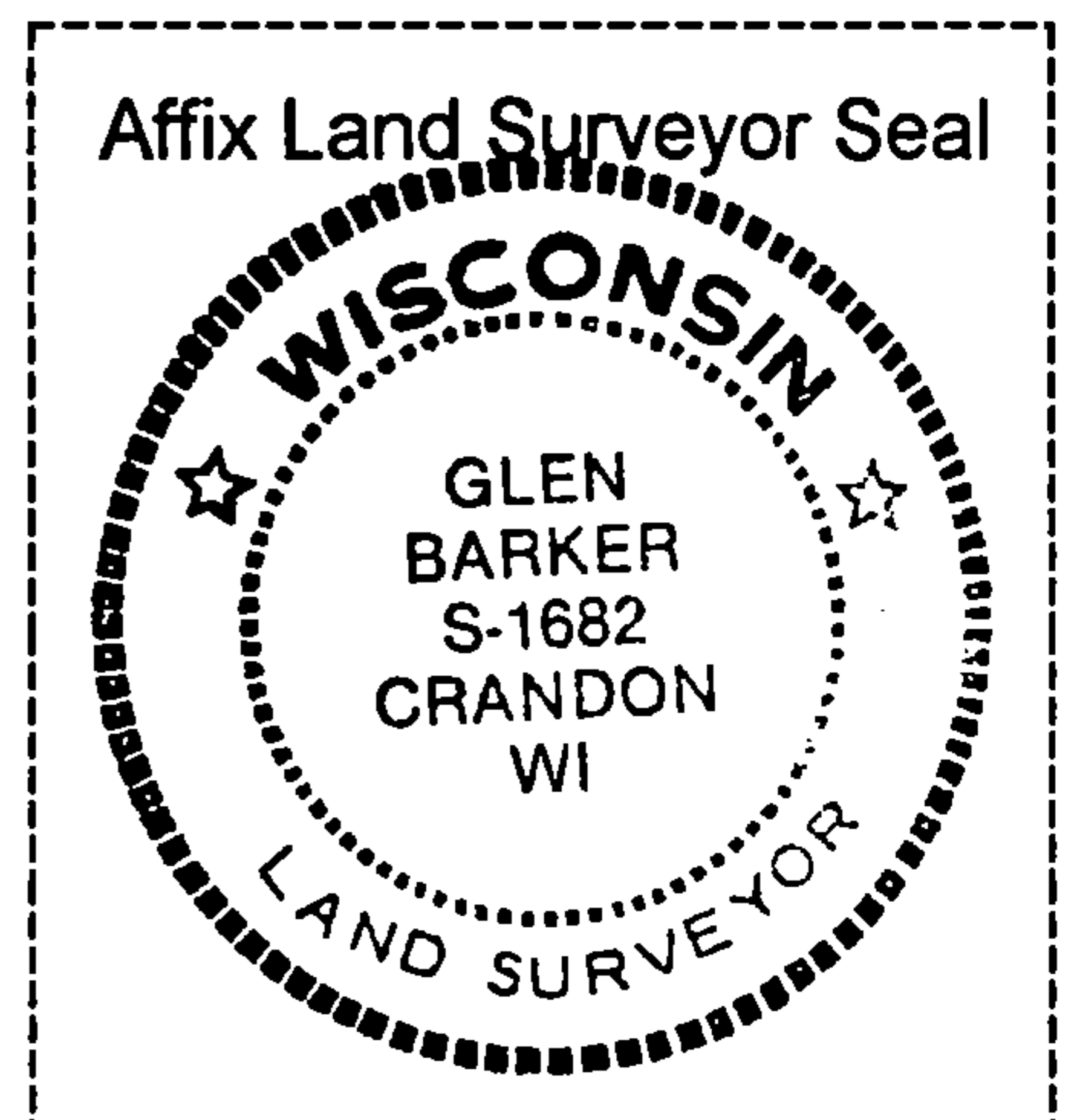
(g&h) Was the corner reestablished through lost corners proportionate methods? If so, show the method, including the directions and distances to other public land survey corners used as evidence or used for proportioning in determining the corner location?



REGISTER'S OFFICE /
Forest County, Wis. (54
Received for record this _____ day
of December, A.D. 1997 at
3:45 o'clock P.M. and recorded
in Vol. Corr. Restorations
page 1-5, 7-36-12.

Paul Tomlinson, Deputy
Register of Deeds

(i) I, Glen Barker
(type or print name) certify that the corner location shown on this
record was determined by me or under my direction and control
and that this U.S. Public Land Survey Monument is correct and
complete to the best of my knowledge and belief.



Signature *Glen Barker* Date 12-06-97 SEC. ---7--- TWN. ---36--- RNG. ---12E---