

CERTIFIED LAND CORNER RESTORATION

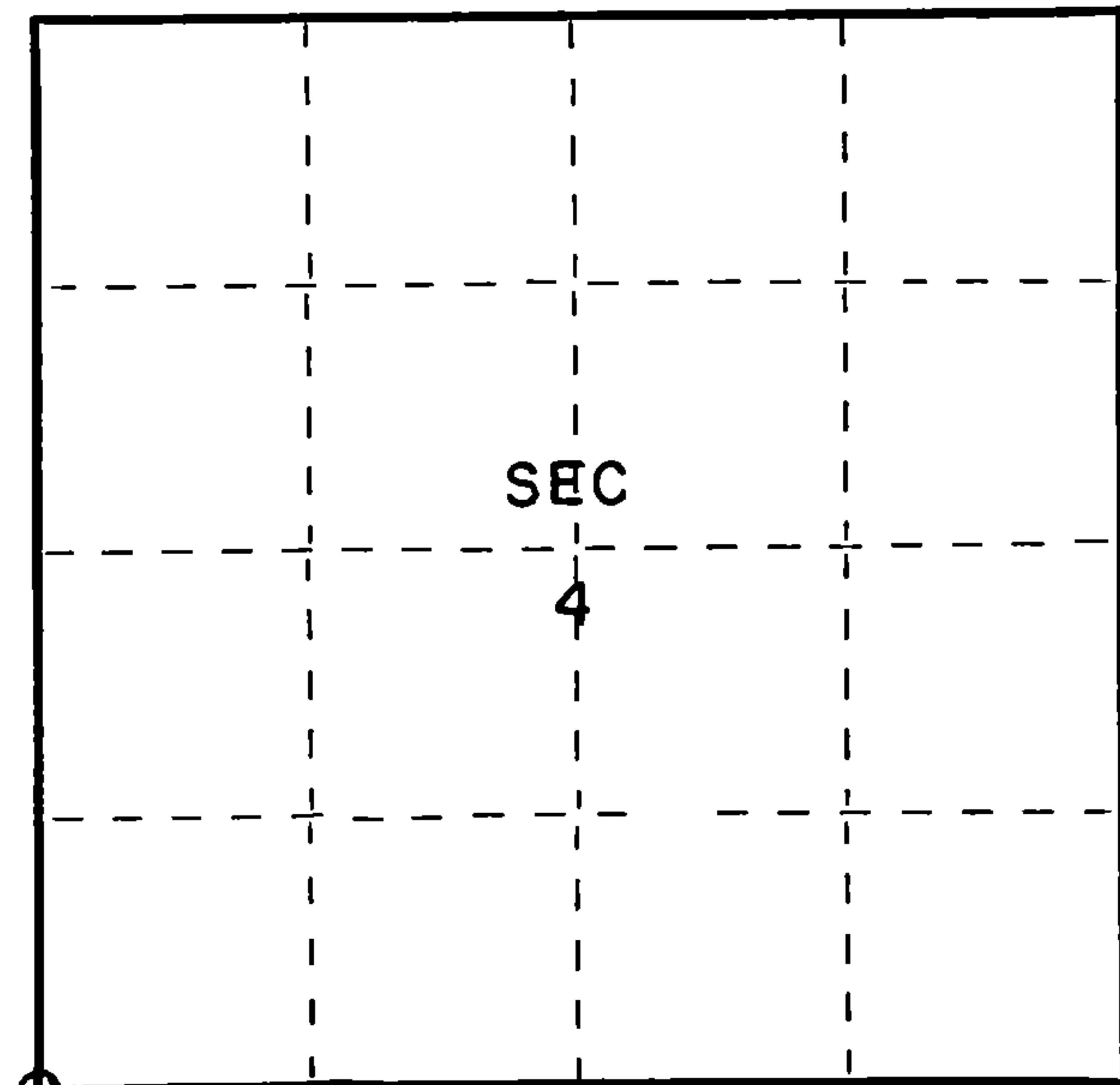
Index No. E-9

State of Wisconsin }  
County of Forest } ss.

I Thomas R. Arnott, do hereby certify that on the 10th day of December, 1975, I found evidence of the section corner of sections 4, 5, 8 & 9 Township 36, North, Range 12 E, Fourth Principal Meridian, as described hereon; and that from this evidence I established a new monument and accessories as described hereon to perpetuate the original location of this corner.

Resident witnesses:

.....  
.....  
.....



○ = Corner monument restored.

History of original corner establishment:

Original subdivision by William Daugherty Aug. 4 - Aug. 9, 1859

Tamarc 8 N29E 52 Lks.  
Tamarc 9 S61E 34 Lks.

Description of corner evidence found:

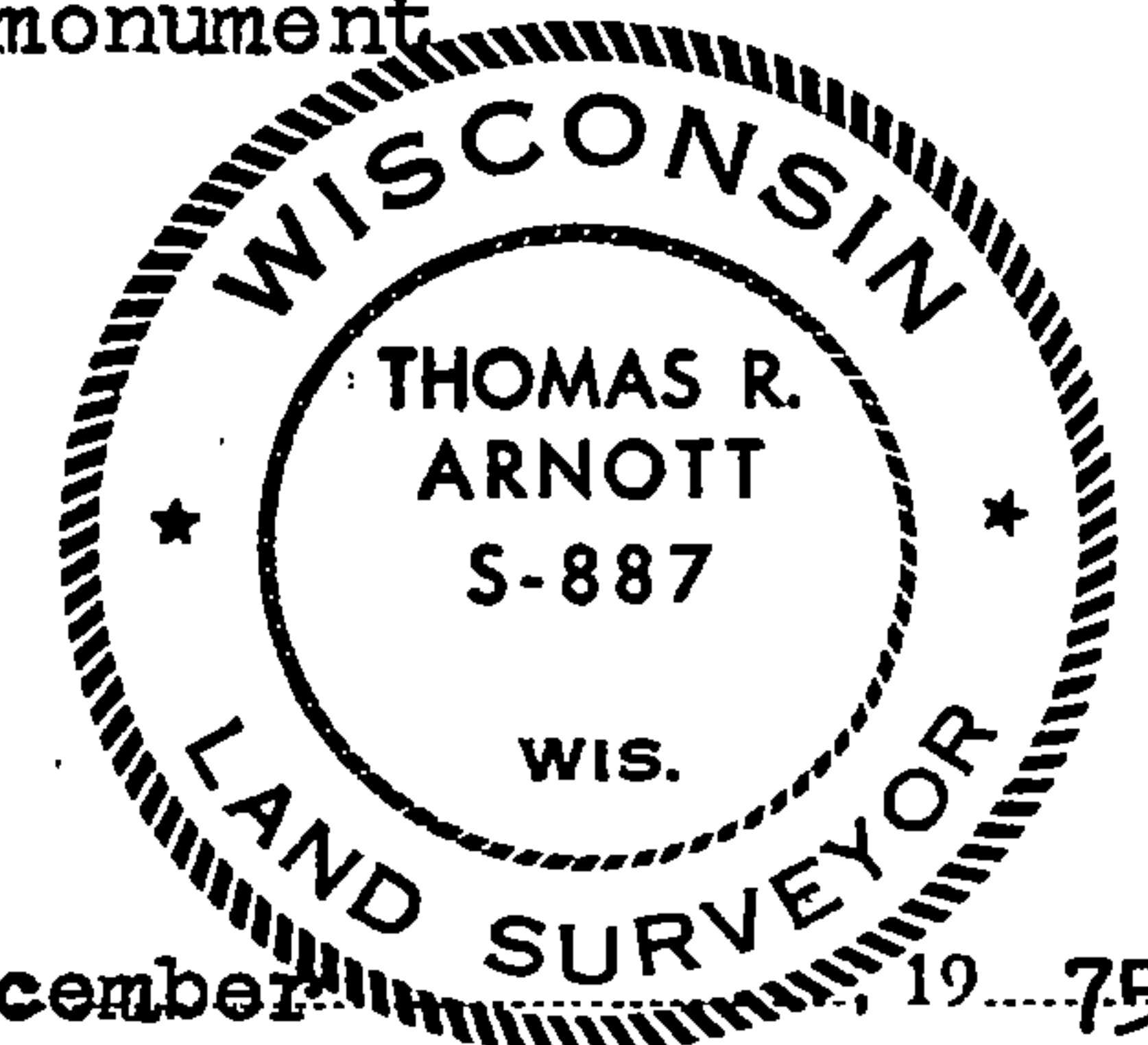
Wood post found in 1974, replace at that time with 2" iron pipe.

Description of monument and accessories I established to perpetuate the original location of this corner.

Replaced iron pipe with new Forest County aluminum monument.

Ties:

W. Birch 6 N54W 7.87 feet  
Maple 6 N82E 35.74 feet  
Maple 6 S13W 12.23 feet



Dated at Crandon Wis., this 16th day of December, 1975.

Signature Thomas Arnott Title Land Surveyor Registration No. S-887  
(County Surveyor, Registered Land Surveyor, or other duly authorized official)

Office of Register of Deeds, County of Forest, I hereby certify that the within instrument was filed in this office for record on the 16th day of December, 1975 at 11 o'clock A. M.

Eugene Stetson Document Number  
(Register of Deeds)

By ..... Deputy

108397

FORM 985 H. C. MILLER CO., MILWAUKEE

43612050000

Document Number  
211701

REGISTER'S OFFICE  
Forest County, Wis.  
Received for record this 22<sup>nd</sup> day  
of April A.D., 2013 at  
9:00 o'clock AM and recorded  
in Vol. Corner Restoration  
page E-9  
*Srika L. Deaton*  
Deputy Register of Deeds

U.S. PUBLIC LAND SURVEY MONUMENT RECORD

(AS REQUIRED BY S. A-E 7.08, WI ADM. CODE)

HISTORY OF ORIGINAL CORNER ESTABLISHMENT AND SUBSEQUENT RESTORATIONS AND DESCRIPTION OF ANY RECORD, MONUMENT, OCCUPATIONAL, TESTIMONIAL, OR OTHER EVIDENCE CONSIDERED:

1859 - ORIGINAL SUBDIVISION BY WILLIAM DAUGHERTY AUG. 4 - AUG. 9, 1859  
TAMARACK 8" N 29° E 52 LKS.  
TAMARACK 9" S 61° E 34 LKS.

1975 - THOMAS R. ARNOTT, SURVEYOR, SET IRON PIPE WITH FOREST COUNTY ALUMINUM MONUMENT  
W. BIRCH 6" N 54° W 7.87 FEET  
MAPLE 6" N 82° E 35.74 FEET  
MAPLE 6" S 13° W 12.23 FEET

CORNER WAS: (CHECK ALL THAT APPLY)

- RESTORED THROUGH ACCEPTANCE OF AN OBLITERATED LOCATION
- RESTORED THROUGH ACCEPTANCE OF A FOUND PERPETUATED LOCATION
- CONSIDERED A LOST CORNER AND REESTABLISHED THROUGH LOST CORNER PROPORTIONATE METHODS (INCLUDING A PLAN VIEW DRAWING SHOWING DISTANCES AND DIRECTIONS TO OTHER PUBLIC LAND SURVEY CORNERS USED FOR PROPORTIONING AND DETERMINING THE CORNER LOCATION)
- RESTORED OF REESTABLISHED IN A LOCATION THAT DIFFERS FROM A PREVIOUS RESTORATION OF REESTABLISHMENT (INCLUDE A PLAN VIEW DRAWING AND INDICATE WHAT WAS SET AND/OR FOUND)

DESCRIBE THE MONUMENT AND ACCESSORIES USED TO PERPETUATE THE LOCATION OF THIS CORNER. (INCLUDE A PLAN VIEW DRAWING AND INDICATE WHAT WAS SET AND/OR FOUND)

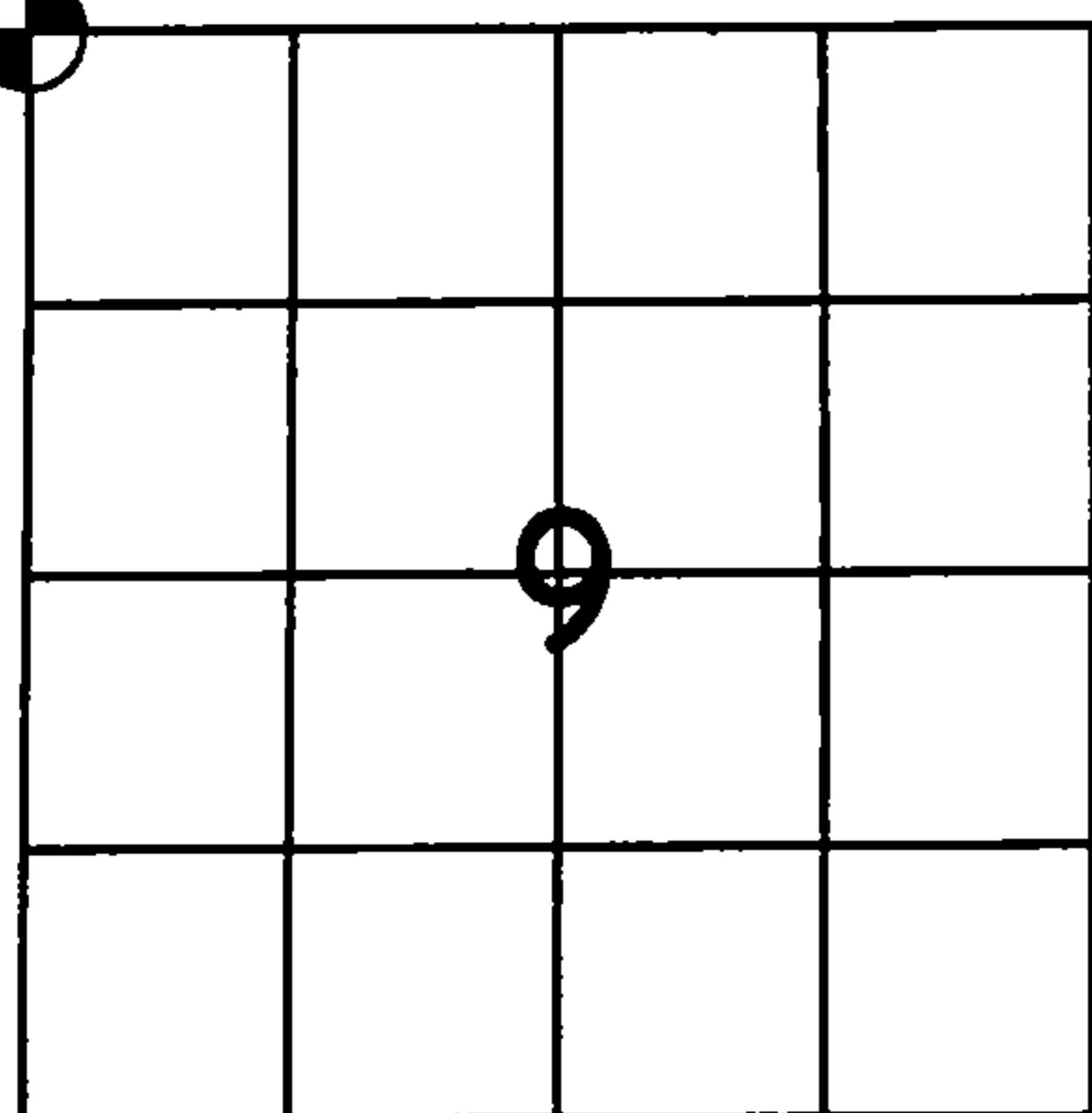
FOUND 3 1/4" FOREST COUNTY ALUMINUM MONUMENT ON 2" IRON PIPE +/- 1.5' ABOVE GROUND. LOCATED TWO EXISTING SUGAR MAPLE BEARING TREES AND A WHITE BIRCH STUMP THAT SATISFIES THE BEARING AND DISTANCE OF THE WHITE BIRCH REFERENCED ON THE 1975 L.C.R.C. BOTH MAPLES HAD OLD STUMP BLAZES. WHITE BIRCH STUMP DECAYED TO MUCH TO RECOGNIZE BLAZES. REFRESHED MAPLES AND SET 2 NEW BEARING TREES.

SET THE FOLLOWING WITNESSES:

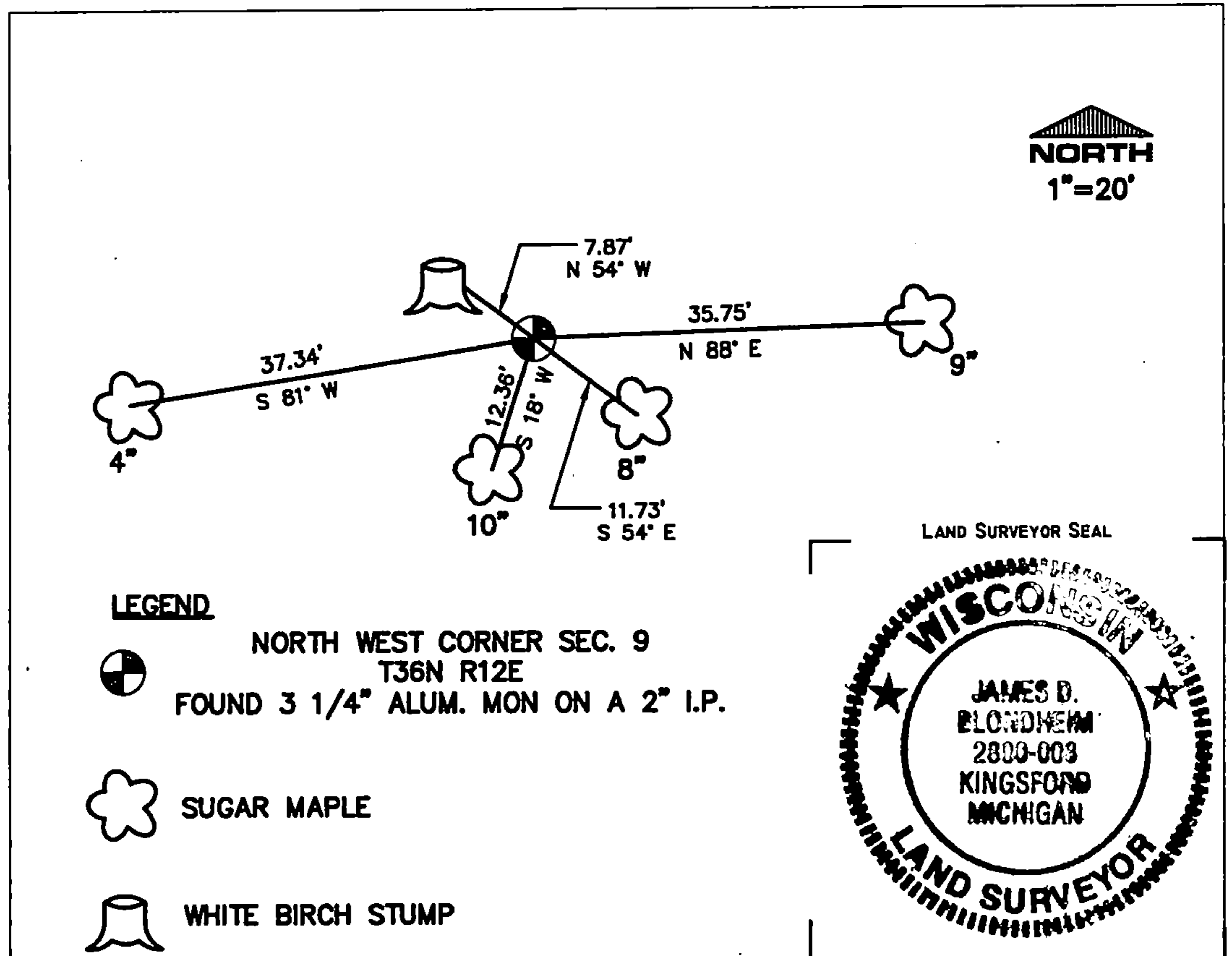
SUGAR MAPLE 9" N 88° E 35.75' SET D.H. NAIL (OLD) (NOTE: D.H. = DOUBLE HEADED)  
SUGAR MAPLE 8" S 54° E 11.73' SET D.H. NAIL  
SUGAR MAPLE 10" S 18° W 12.36' SET D.H. NAIL (OLD)  
SUGAR MAPLE 4" S 81° W 37.34' SET D.H. NAIL

ALL TREES HAVE NEW CHEST AND STUMP BLAZES

THE NORTH WEST ONE QUARTER  
CORNER OF SECTION 9,  
T. 36 N., R. 12 E.,  
FOURTH PRINCIPAL MERIDIAN,  
FOREST COUNTY, WISCONSIN



= LOCATION OF CORNER



LAND SURVEYOR SEAL



I, JAMES D. BLONDHEIM RLS #2800-8

(TYPE OR PRINT NAME) CERTIFY THAT THE CORNER LOCATION SHOWN ON THIS ABOVE RECORD WAS DETERMINED BY ME OR UNDER MY DIRECTION AND CONTROL AND THAT THIS U.S. PUBLIC LAND SURVEY MONUMENT RECORD IS CORRECT AND COMPLETE TO THE BEST OF MY KNOWLEDGE AND BELIEF.

SIGNATURE

DATE

INDEX No. E-9

*J. D. Blondheim* 4/17/2013

43612050000