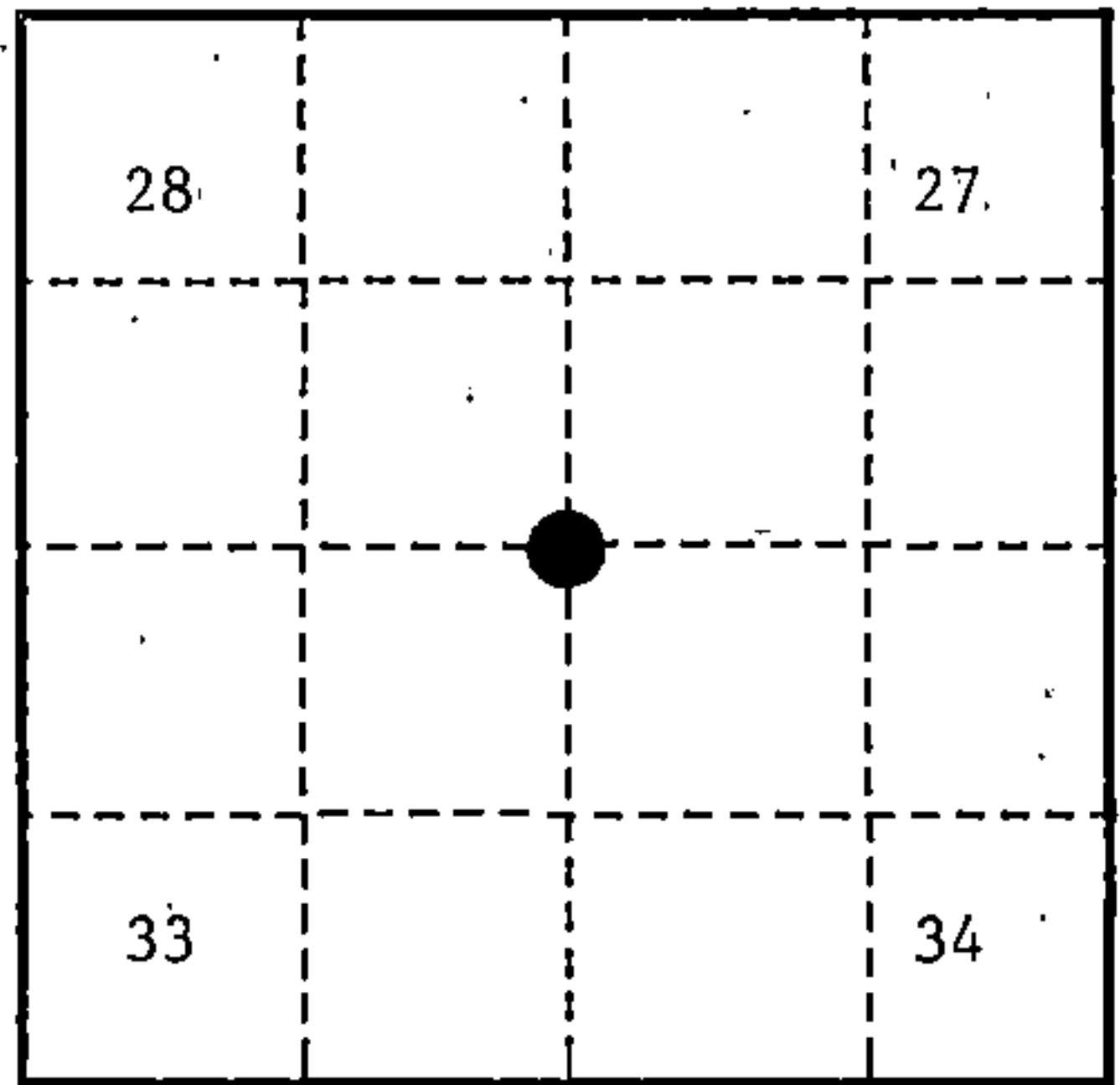


U. S. PUBLIC LAND SURVEY MONUMENT RECORD

INSTRUCTIONS:

This record shall show the location of the corner and shall include all of the following nine elements (a through i).

- (a) Identify the corner by reference to the U.S. public land survey system.
 ○ = Corner monument restored.



Section corner to sections 17-18-33-34, T.35N., R.16E., Forest County, Wisconsin.

- (b) Describe any record evidence, monument evidence, occupational evidence, testimonial evidence or any other material evidence you considered, and whether the monument was found or placed.

In 1858, James McBride set a wood post with the following B.T.'s: Sugar, 12", N.14°W., 34 links (22.44 feet); Sugar, 10", N.76°E., 12 links (7.92 feet); Sugar, 12", S.37°E., 75 links (50.16 feet); Sugar, 12", S.71°W., 29 links (19.14 feet).

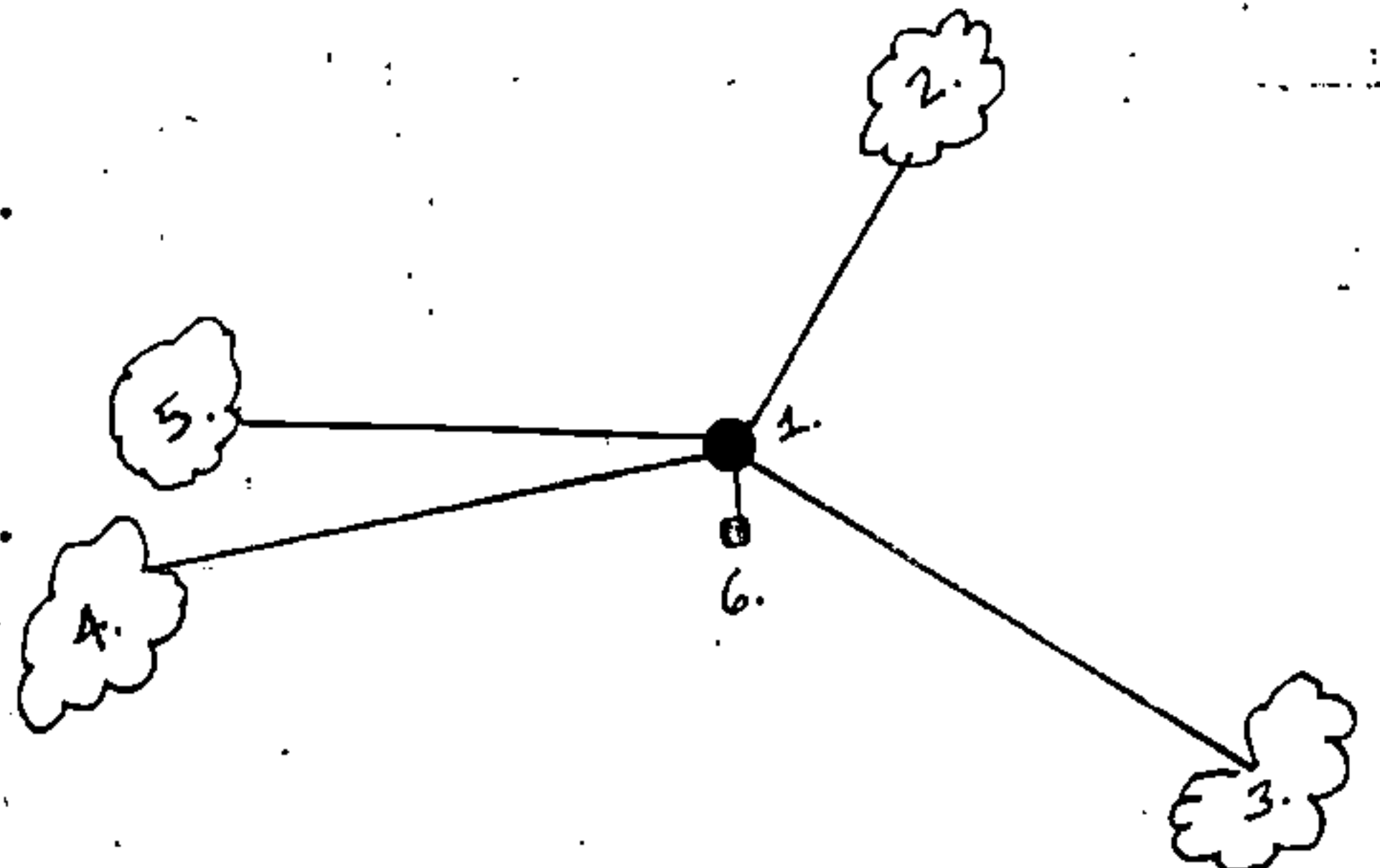
In 1970, Godlevske found well point. No othe evidence of substantial B.T.'s or corner, stumps in area do not fit.

In 1990, Alan D. Harrison (RLS) found no evidence of corner or B.T.'s. Road work probably took out well point. Corner restored by double proportionate measure.

- (c) In the plan view drawing below, provide reference ties to at least 4 witness monuments, or, if the location is within a municipality, to at least 2 witness monuments. (witness monuments shall be made of concrete, natural stone, iron or other equally durable material.)

- (d) Show a plan view drawing depicting the relevent monuments and reference ties which is sufficient in detail to enable accurate relocation of the corner monument if the corner monument is disturbed. Indicate north.

1. 2½" x 36" aluminum monument with tablet stamped to identify the corner.
2. Sugar, 20", N.21°E., 16.69 feet.
3. Sugar, 11", S.50°E., 25.54 feet.
4. Sugar, 9", S.72°W., 24.20 feet.
5. Sugar, 12", N.89°W., 18.92 feet.
6. Steel Sign Post, 6', South, 1.87 feet.



REGISTER'S OFFICE }
Forest County, Wis. }

Received for record this 19th day of December, A.D., 1920 at 8:45 o'clock A.M. and recorded in Vol. Corner Restorations page V-13

Paul Aschenbrenner
Register of Deeds

43516 280000

(a) Describe any material discrepancy between the location of the corner as restored or reestablished and the location of that corner as previously restored or reestablished by distance and direction. Show the discrepancy on the plan view drawing under (d), above. Show the distances between the corner as previously restored or reestablished and (1) the corner as restored or reestablished, and (2) to at least 2 of the witness monuments shown on the drawing in (d), above.

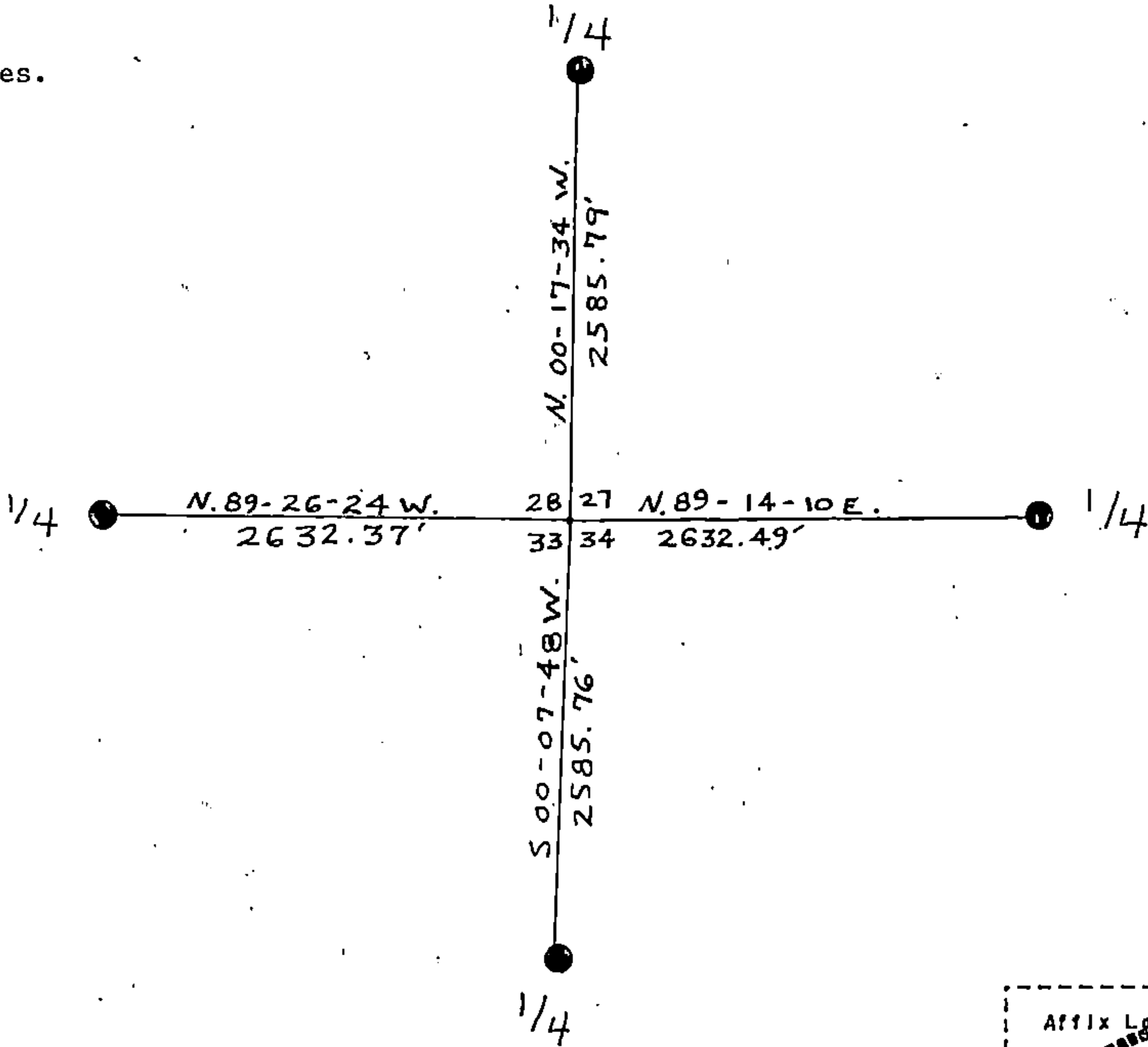
None.

(f) Was the corner restored through acceptance of (1) an obliterated evidence location, or, (2) a found perpetuated location?

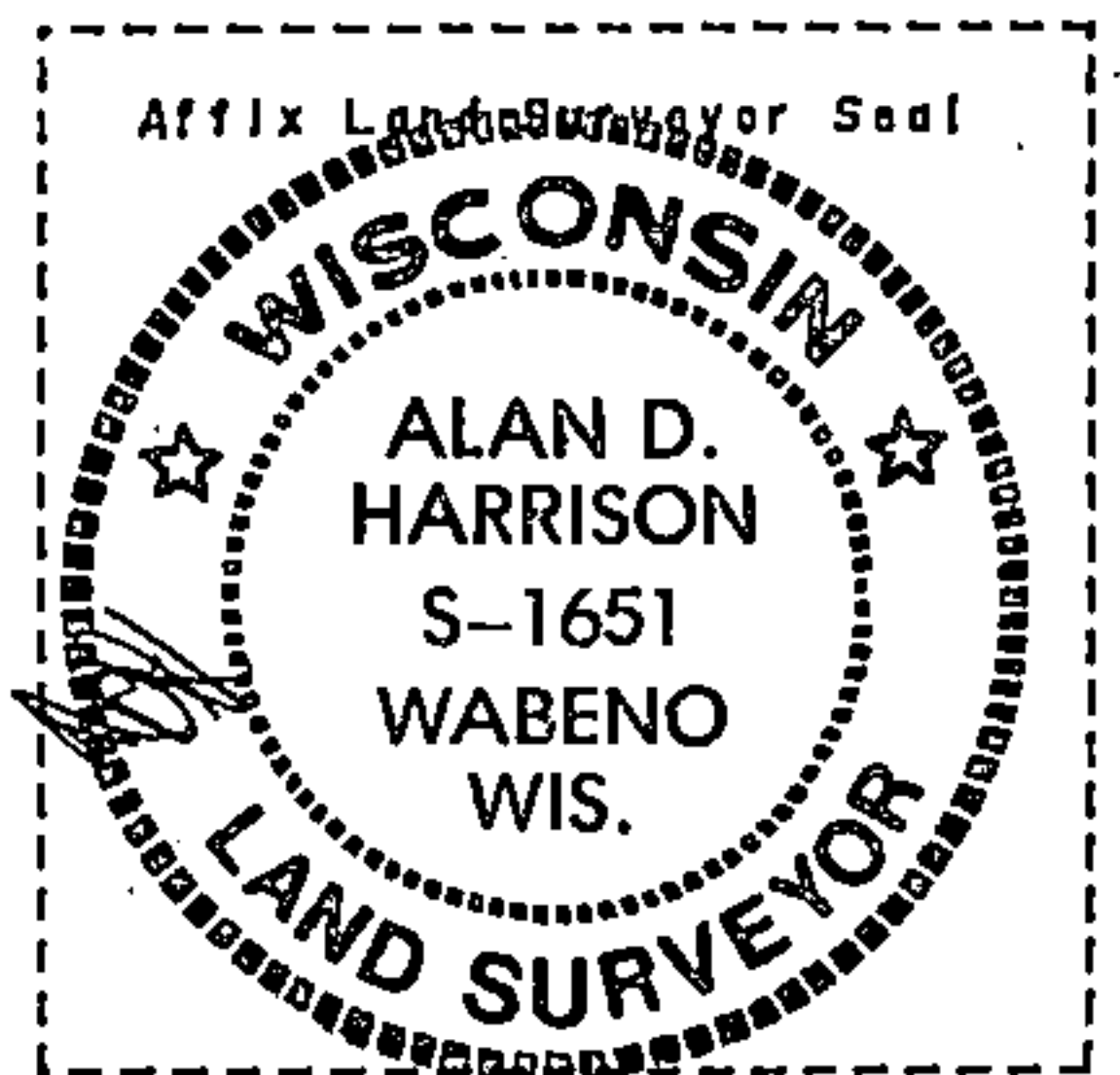
No.

(g & h) Was the corner reestablished through lost corner proportionate methods? If so, show the method, including the directions and distances to other public land survey corners used as evidence or used for proportioning in determining the corner location?

Yes.



(1) I, Alan D. Harrison
 (type or print name) certify that the corner location shown on this record was determined by me or under my direction and control and that this U.S. Public Land Survey Monument Record is correct and complete to the best of my knowledge and belief.



Alan D. Harrison 11/30/90
 Signature Date

CERTIFICATE READY FOR FILING: Dale S. Staeger
 District Ranger