

CERTIFIED LAND CORNER RESTORATION

State of Wisconsin }
County of Forest } ss.

I Jean F. Resvick, do hereby certify that on the 29th day of April, 1975, I found evidence of the East Quarter corner of Section 25 Township 35 North, Range 16 East, Fourth Principal Meridian, as described hereon; and that from this evidence I established a new monument and accessories as described hereon to perpetuate the original location of this corner:

Description of original monument and accessories and subsequent restorations:

Surveyed in 1857 by Artemas Curtis
Surveyed in December 1934 and July 1935 by J.J. Jenkins, Menominee County Surveyor. N00°15'E between Sections 25 and 30. 39.94 chains set a 4" iron post with a brass cap stamped: Marinette Co. Survey, 1/4, T35N, R16E, T35N, R17E, 25, 30

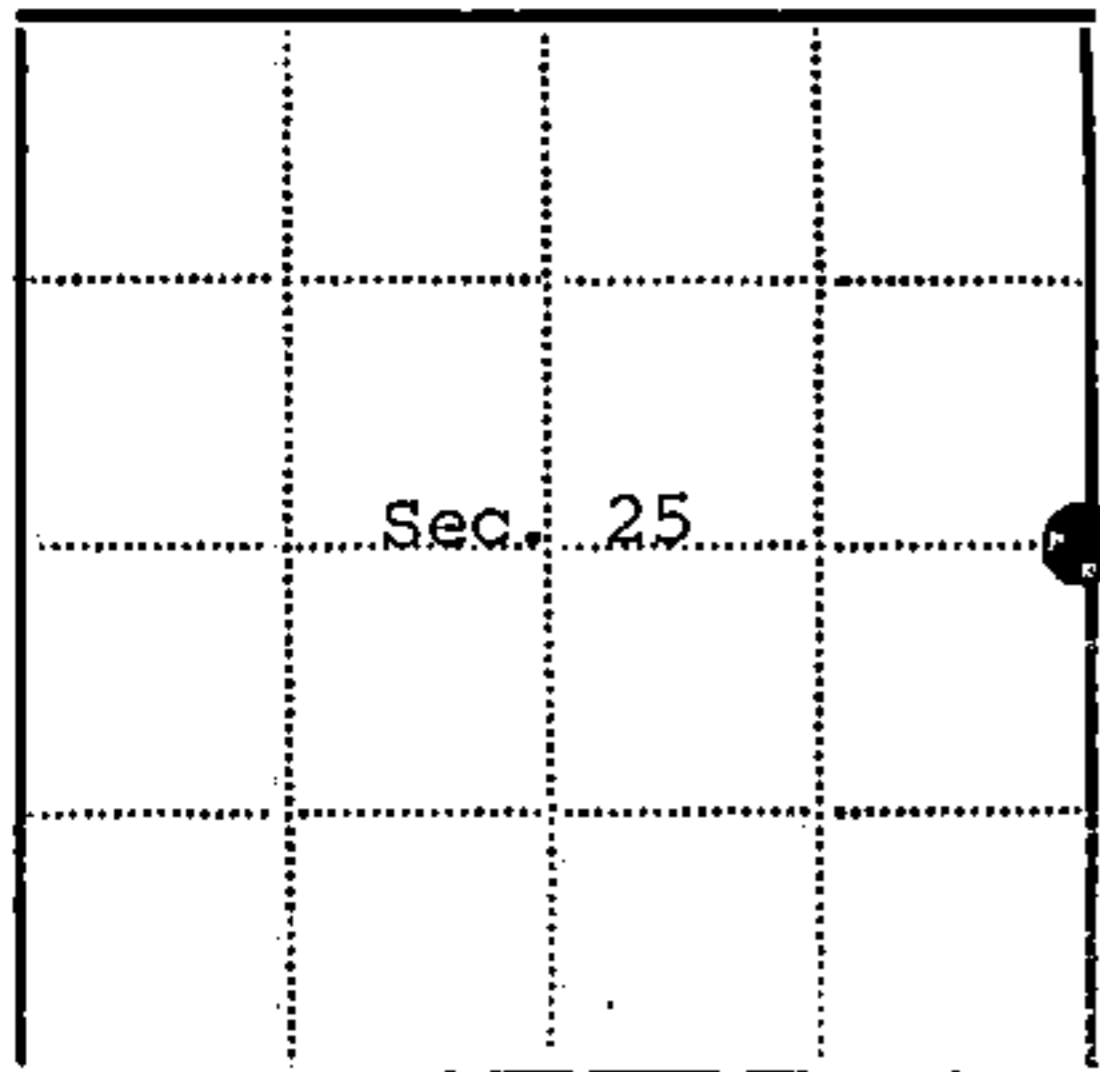
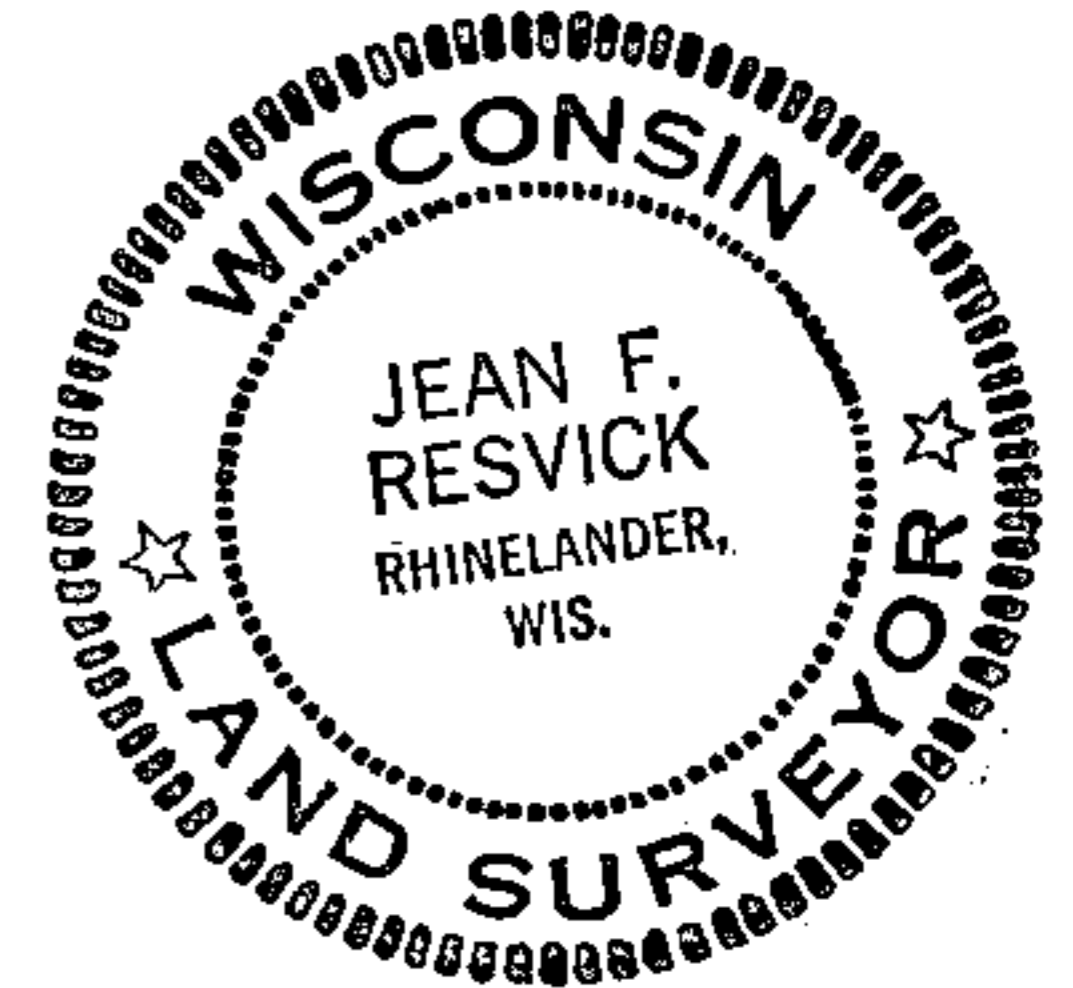
Description of corner evidence found:

Monument as described above and in place.

Description of monument and accessories I established to perpetuate the location of this corner:

Blazed and scribed the following new bearing trees:

Maple, 7", S11°E, 28.81 feet
Maple, 6", S44°W, 39.80 feet
Set a steel sign post SE of the monument, 0.50 feet



● - Corner monument restored
□ -

Resident witnesses.....

Dated at Rhinelander, Wisconsin, this 15 day of June 1976.

Signature *Jean F. Resvick* Title Land Surveyor
(County Surveyor, Registered Land Surveyor, or other duly authorized official)

Surveyors Registration No. S-802 DOCUMENT NUMBER 109584

Office of Register of Deeds County of Forest

I hereby certify that the within instrument was filed in this office for record on the 2nd day of July 1976, and was filed in Book No. Page No. of County Records.

Signature *Eugene Staszny* Title Register of Deeds

Township 35 North, Range 16 East, Section 25, Index No. T-25, Page No.

43516252000

T 25

U. S. PUBLIC LAND SURVEY MONUMENT RECORD

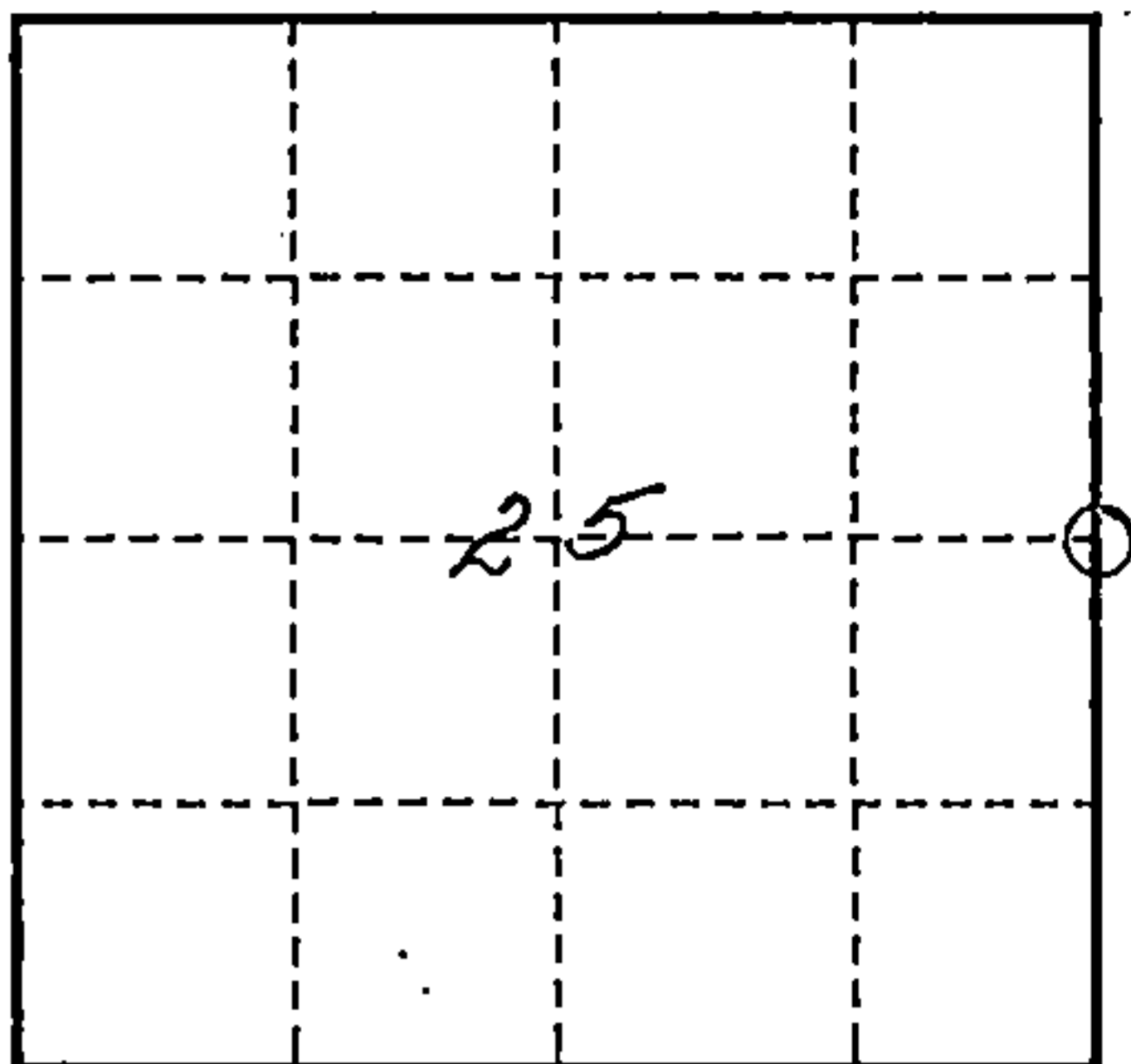
INSTRUCTIONS:

This record shall show the location of the corner and shall include all of the following nine elements (a through i).

- (a) Identify the corner by reference to the U.S. public land survey system.
○ = Corner monument restored.

Quarter Corner to Sections 25 and 30,
T35N, R16 - 17E.

REGISTER'S OFFICE }
Forest County, Wis. }
Received for record this 20th day
of March A.D., 1930 at
2:00 o'clock P.M. and recorded
in Vol. Corner Restorations
page 7-25
Paul H. Schumacher
Register of Deeds



- (b) Describe any record evidence, monument evidence, occupational evidence, testimonial evidence or any other material evidence you considered, and whether the monument was found or placed.

1857 - Artemas Curtis established this corner and set a wood post with two bearing trees: Elm, 10", S78°W, 17 Links and Ironwood, 8", N89°E, 25 Links.

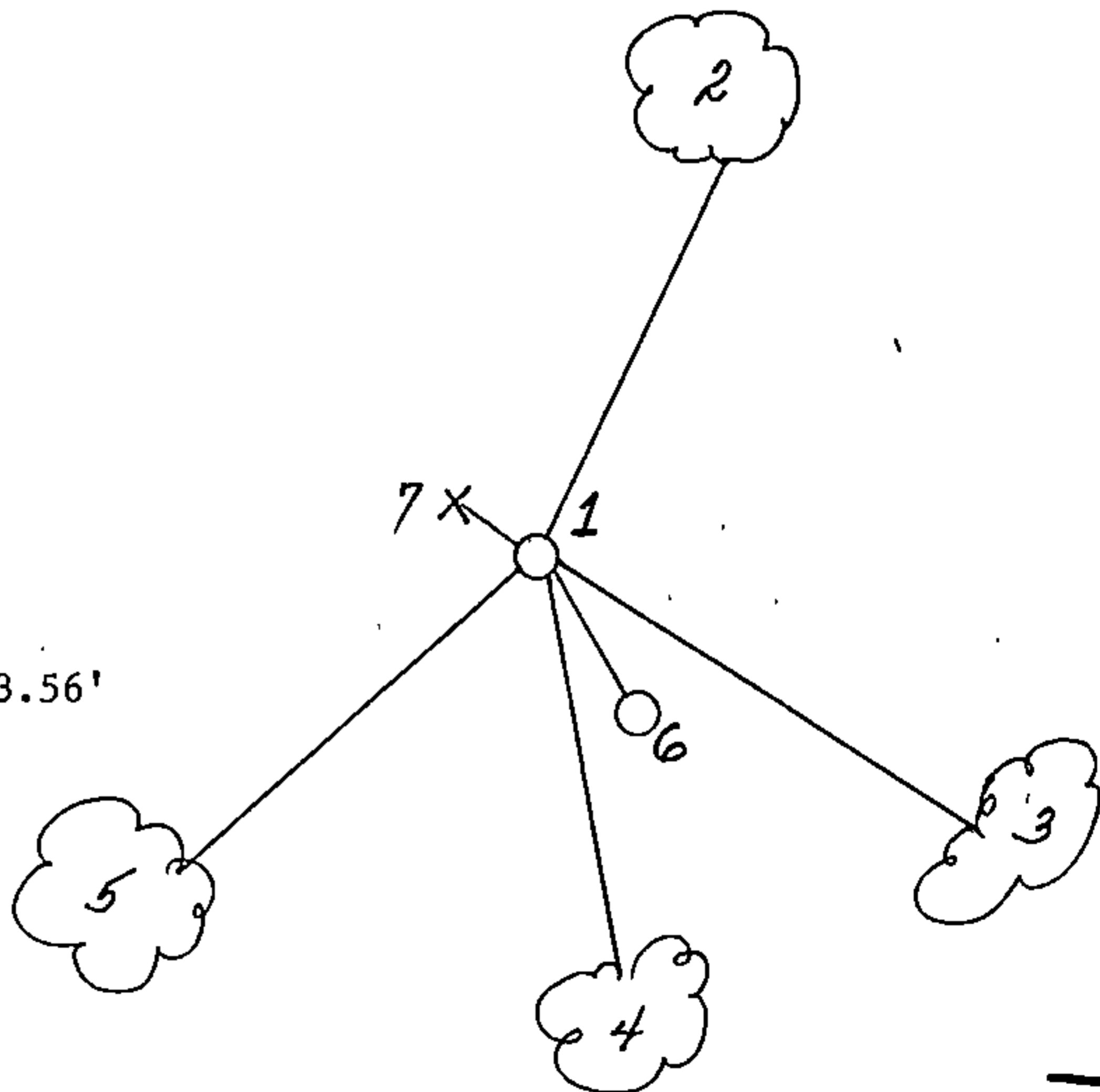
1934 - 1935, J. J. Jenkins attempted to restore this corner by Lost Methods. He placed a 4" x 36" iron pipe with brass cap for the corner.

August 7, 1990, Milo E. Stefan in the Section Subdivision of Section 24 and restoration of the East Boundary of Section 25, found this corner to be in error by 3.56 feet. In consultation with Nicolet National Forest Surveyor, Al Harrison, and Marinette County Surveyor, Jerome Pillath, decided to use the county monument as a Witness Corner and restore this corner at its proper location by single proportionate measure between the Section Corners North and South.

- (c) In the plan view drawing below, provide reference ties to at least 4 witness monuments, or, if the location is within a municipality, to at least 2 witness monuments. (witness monuments shall be made of concrete, natural stone, iron or other equally durable material.)

- (d) Show a plan view drawing depicting the relevant monuments and reference ties which is sufficient in detail to enable accurate relocation of the corner monument if the corner monument is disturbed. Indicate north.

- 1) 2½" x 36" aluminum monument in mound of stone
- 2) Sugar Maple, 8", N16°E, 30.65'
- 3) Sugar Maple, 8", S09°E, 32.69'
- 4) Sugar Maple, 8", S47°E, 51.54'
- 5) Sugar Maple, 8", S49°W, 41.76'
- 6) 4" x 36" iron pipe with brass cap buried to ground level, S13°-59.2'E, 3.56'
- 7) Steel Sign Post, Northwest, 1.4'



4351625 2030

T25

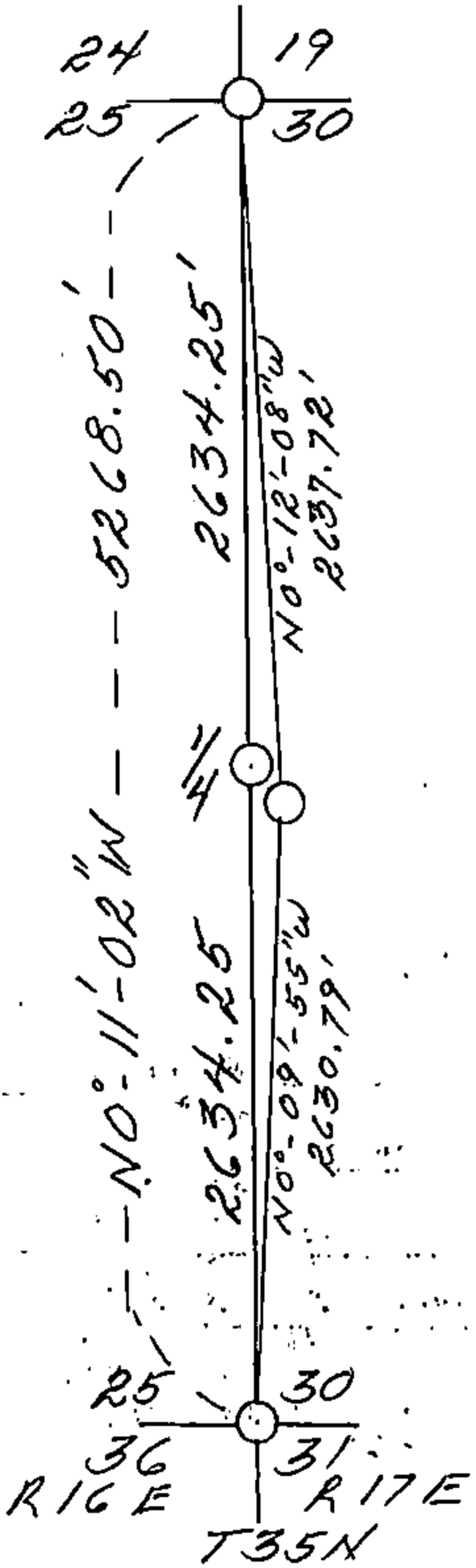
(e) Describe any material discrepancy between the location of the corner as restored or reestablished and the location of that corner as previously restored or reestablished by distance and direction. Show the discrepancy on the plan view drawing under (d). above. Show the distances between the corner as previously restored or reestablished and (1) the corner as restored or reestablished, and (2) to at least 2 of the witness monuments shown on the drawing in (d), above.

See drawing under g and h.

(f) Was the corner restored through acceptance of (1) an obliterated evidence location, or, (2) a found perpetuated location?

Not applicable.

(g & h) Was the corner reestablished through lost corner proportionate methods? If so, show the method, including the directions and distances to other public land survey corners used as evidence or used for proportioning in determining the corner location?



(1) I, Milo E. Stefan
 (type or print name) certify that the corner location shown on this record was determined by me or under my direction and control and that this U.S. Public Land Survey Monument Record is correct and complete to the best of my knowledge and belief.

Milo E. Stefan September 7, 1990
 Signature Date

CERTIFICATE READY FOR FILING: Dale B. Stage
 District Ranger