

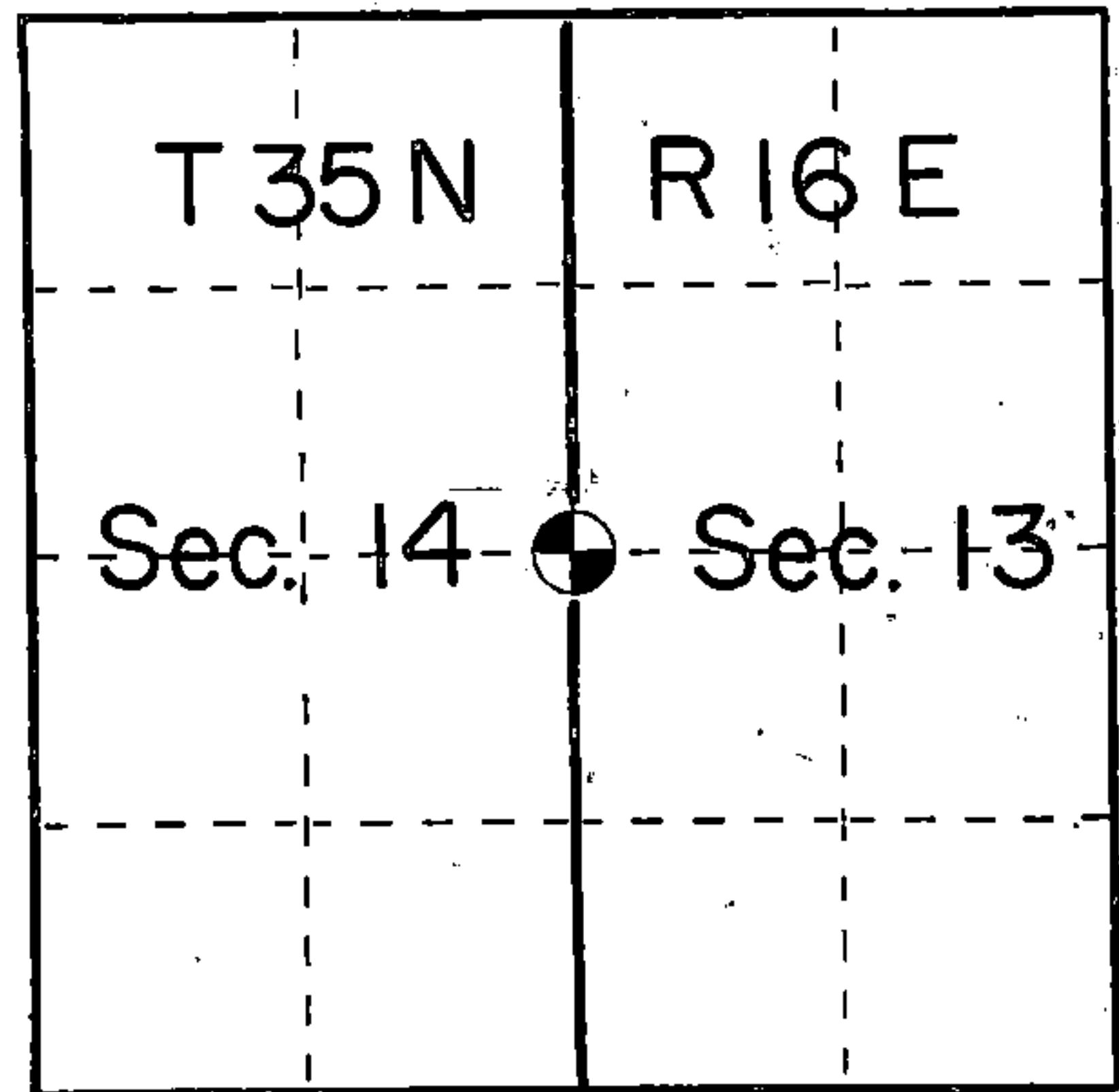
## U. S. PUBLIC LAND SURVEY MONUMENT RECORD

## INSTRUCTIONS:

This record shall show the location of the corner and shall include all of the following nine elements (a through i).

- (a) Identify the corner by reference to the U.S. public land survey system.  
 O = Corner monument restored.

Quarter corner between  
 Section 14 and 13  
 Township 35 North, Range 16 East,  
 Forest County, Wisconsin



- (b) Describe any record evidence, monument evidence, occupational evidence, testimonial evidence or any other material evidence you considered, and whether the monument was found or placed.

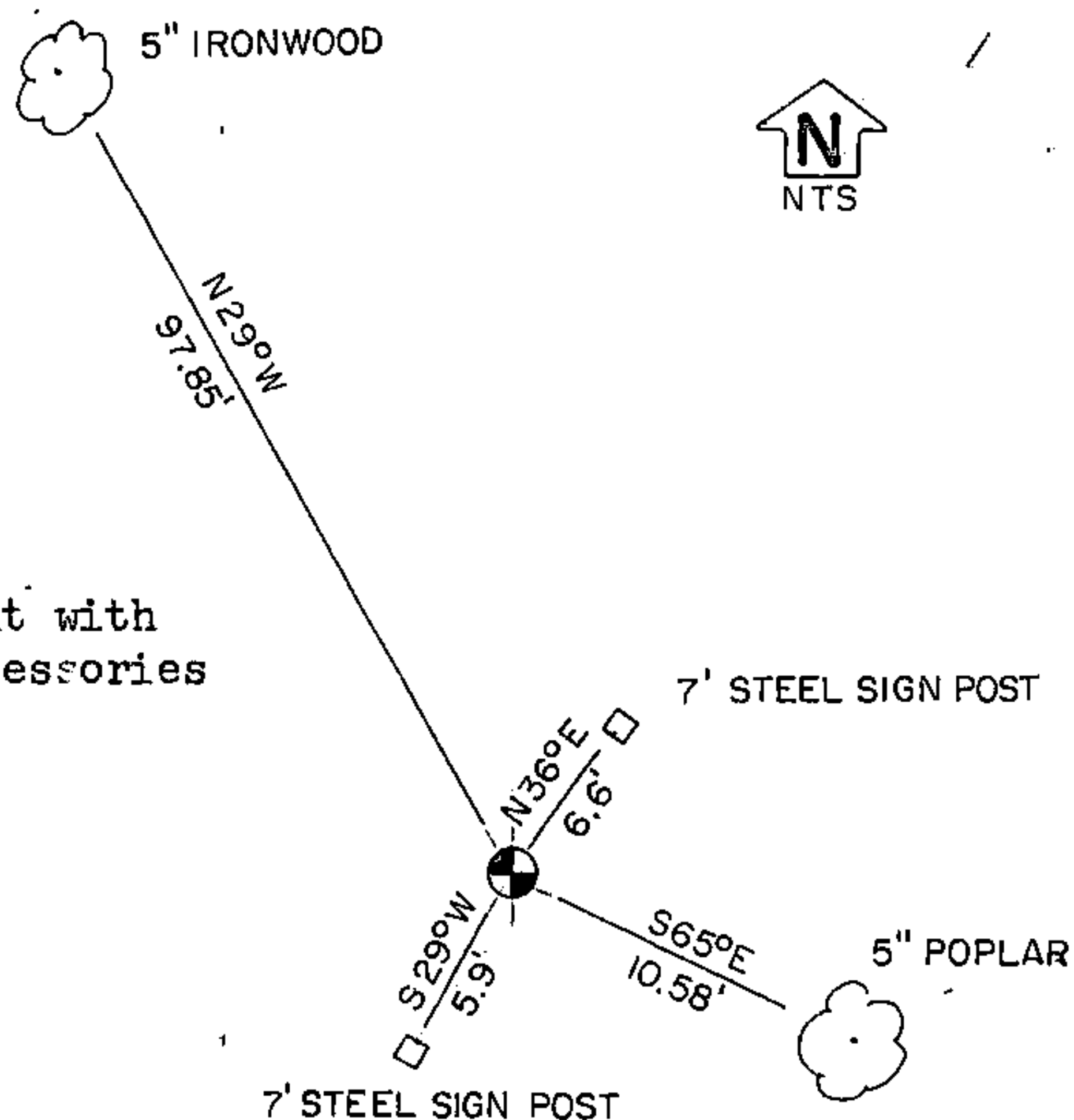
In 1858 James McBride set a wood post at 40.00 chains with:  
 Sugar 12" N44E 40 links  
 Sugar 14" N69W 25 links

Area had been recently logged off and fell in popple regeneration. Set this corner by lost methods of single proportionate measure.

- (c) In the plan view drawing below, provide reference ties to at least 4 witness monuments, or, if the location is within a municipality, to at least 2 witness monuments. (Witness monuments shall be made of concrete, natural stone, iron or other equally durable material.)  
 Describe witness monuments.

- (d) Show a plan view drawing depicting the relevant monuments and reference ties which is sufficient in detail to enable accurate relocation of the corner monument if the corner monument is disturbed. Indicate north.

Set a 2"x 30" Aluminum monument with cap stamped for corner and accessories set to USFS standards.



REGISTER'S OFFICE  
 Forest County, Wis.

Received for record this 7th day  
 of August A.D., 1985 at  
3:00 o'clock P.M. and recorded  
 in Vol. CORNER RESTORATIONS  
 page 4-21

Paul Aschenbrenner  
 Register of Deeds

43516142000

- (e) Describe any material discrepancy between the location of the corner as restored or reestablished and the location of that corner as previously restored or reestablished by distance and direction. Show the discrepancy on the plan view drawing under (d), above. Show the distances between the corner as previously restored or reestablished and (1) the corner as restored or reestablished, and (2) to at least 2 of the witness monuments shown on the drawing in (d), above.

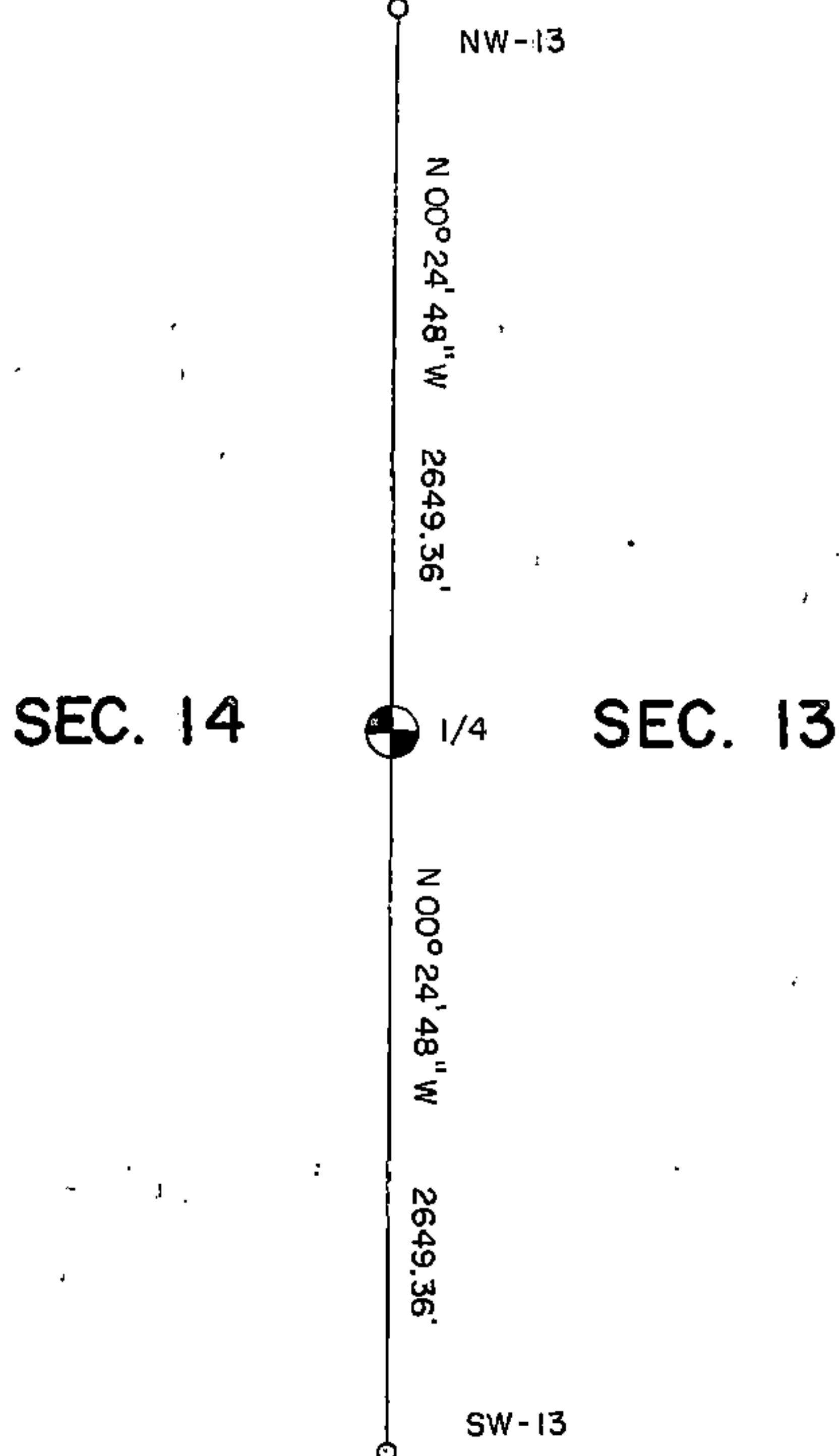
No discrepancy

- (f) Was the corner restored through acceptance of (1) an obliterated evidence location, or, (2) a found perpetuated location?

Obliterated evidence location

- (g&h) Was the corner reestablished through lost corner proportionate methods? If so, show the method, including the directions and distances to other public land survey corners used as evidence or used for proportioning in determining the corner location?

Lost corner proportionate methods.



Affix Land Surveyor Seal



- (i) I, Kim H. Pritzlaff  
(type or print name) certify that the corner location shown on this record was determined by me or under my direction and control and that this U.S. Public Land Survey Monument Record is correct and complete to the best of my knowledge and belief.

Signature

Date

5-16-85

## U. S. PUBLIC LAND SURVEY MONUMENT RECORD

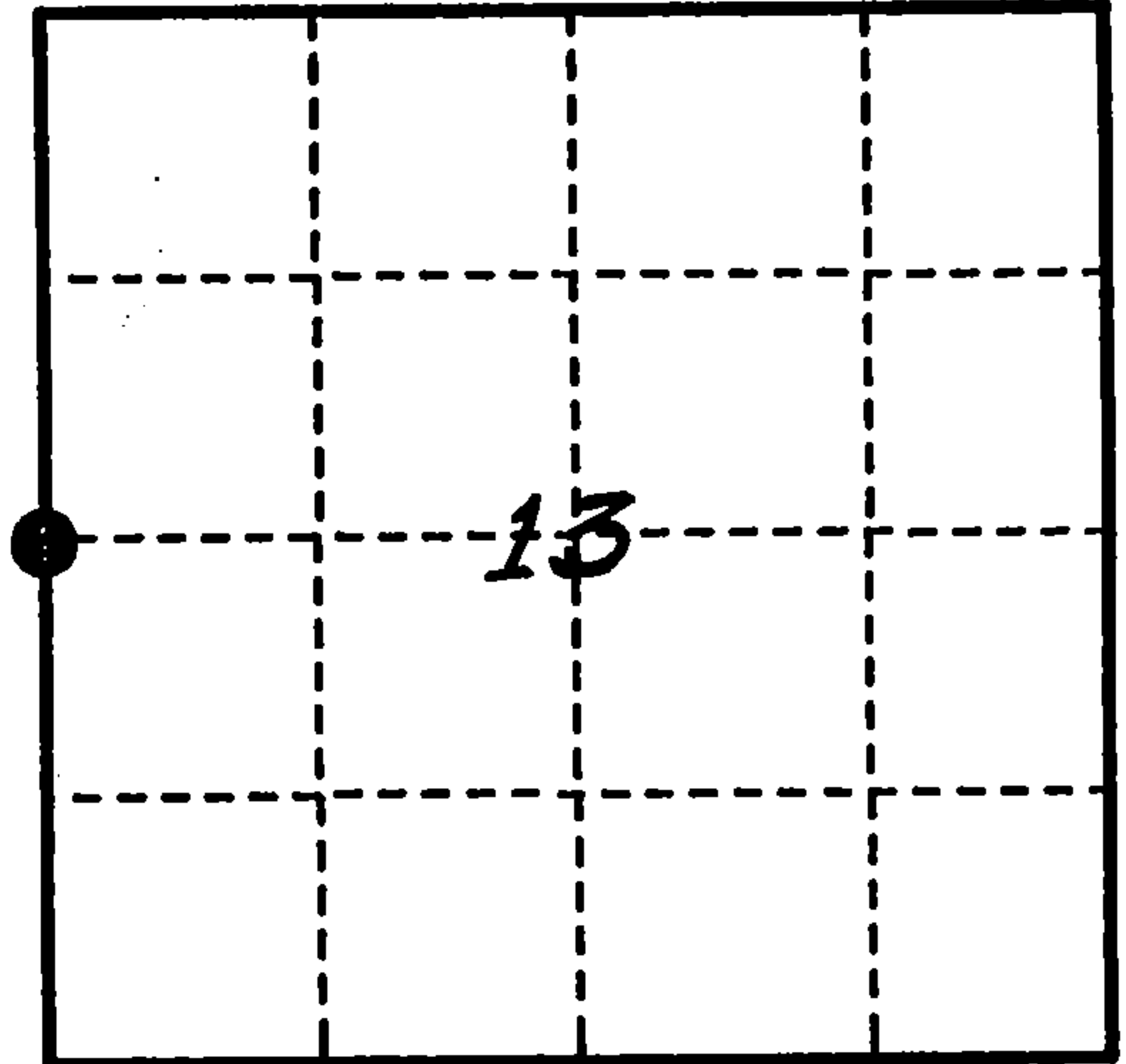
## INSTRUCTIONS:

This record shall show the location of the corner and shall include all of the following nine elements (a through i).

- (a) Identify the corner by reference to the U.S. public land survey system.

○ = Corner monument restored.

Quarter Corner to Sections 13 & 14,  
T.35N., R.16E., 4th P.M.



- (b) Describe any record evidence, monument evidence, occupational evidence, testimonial evidence or any other material evidence you considered, and whether the monument was found or placed.

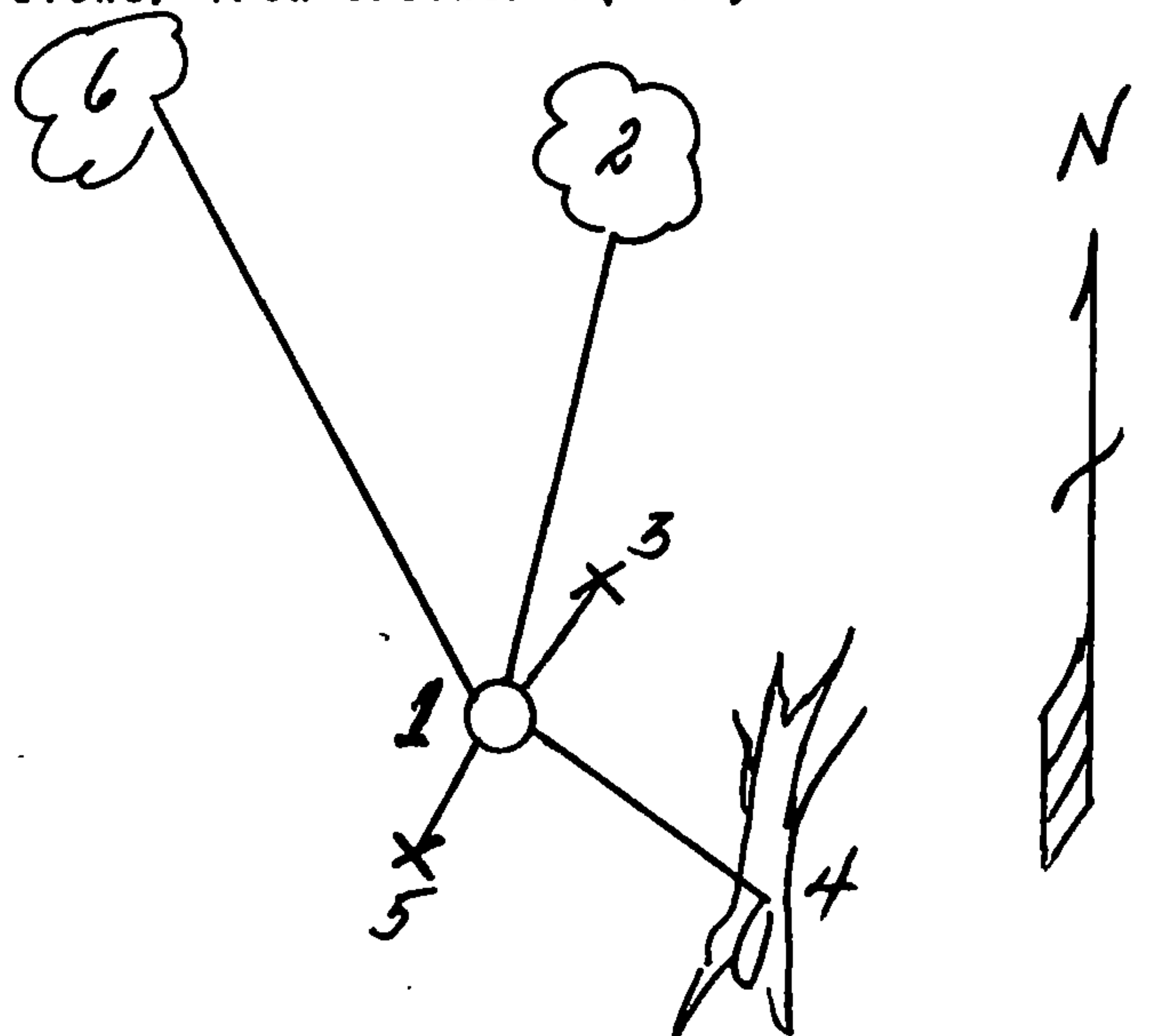
Found monument, two sign posts and Elm BT in good condition. Aspen BT - dead. We made a new BT: Basswood, 3", N.13°E., 36.70'.

This corner was restored by Pritzlaff and Lenca in 1985.

- (c) In the plan view drawing below, provide reference ties to at least 4 witness monuments, or, if the location is within a municipality, to at least 2 witness monuments. (witness monuments shall be made of concrete, natural stone, iron or other equally durable material.)

- (d) Show a plan view drawing depicting the relevant monuments and reference ties which is sufficient in detail to enable accurate relocation of the corner monument if the corner monument is disturbed. Indicate north.

1. 2 1/2" Aluminum monument.
2. Basswood, 3", N.13°E., 36.70'.
3. Steel sign post, N.36°E., 6.6'.
4. Aspen (dead), 5", S.65°E., 10.58'.
5. Steel sign post, S.29°W., 5.9'.
6. Elm, 5", N.29°W., 97.85'.



REGISTER'S OFFICE !

Forest County, Wis.

Received for record this 9th day

of March A.D., 19 95 at

9:15 o'clock A. M. and recorded

In Vol. 35-16 Corner Restorations

page 2-21

Scott Chittles Deputy  
Register of Deeds

43516142000

(e) Describe any material discrepancy between the location of the corner as restored or reestablished and the location of that corner as previously restored or reestablished by distance and direction. Show the discrepancy on the plan view drawing under (d), above. Show the distances between the corner as previously restored or reestablished and (1) the corner as restored or reestablished, and (2) to at least 2 of the witness monuments shown on the drawing in (d), above.

N/A

(f) Was the corner restored through acceptance of (1) an obliterated evidence location, or, (2) a found perpetuated location?

(2)

(g & h) Was the corner reestablished through lost corner proportionate methods? If so, show the method, including the directions and distances to other public land survey corners used as evidence or used for proportioning in determining the corner location?

N/A

(1) I, Milo E. Stefan

(type or print name) certify that the corner location shown on this record was determined by me or under my direction and control and that this U.S. Public Land Survey Monument Record is correct and complete to the best of my knowledge and belief.

Milo E. Stefan  
Signature

November 20, 1992

Date

CERTIFICATE READY FOR FILING:

Dale R. Covey  
Acting District Ranger

