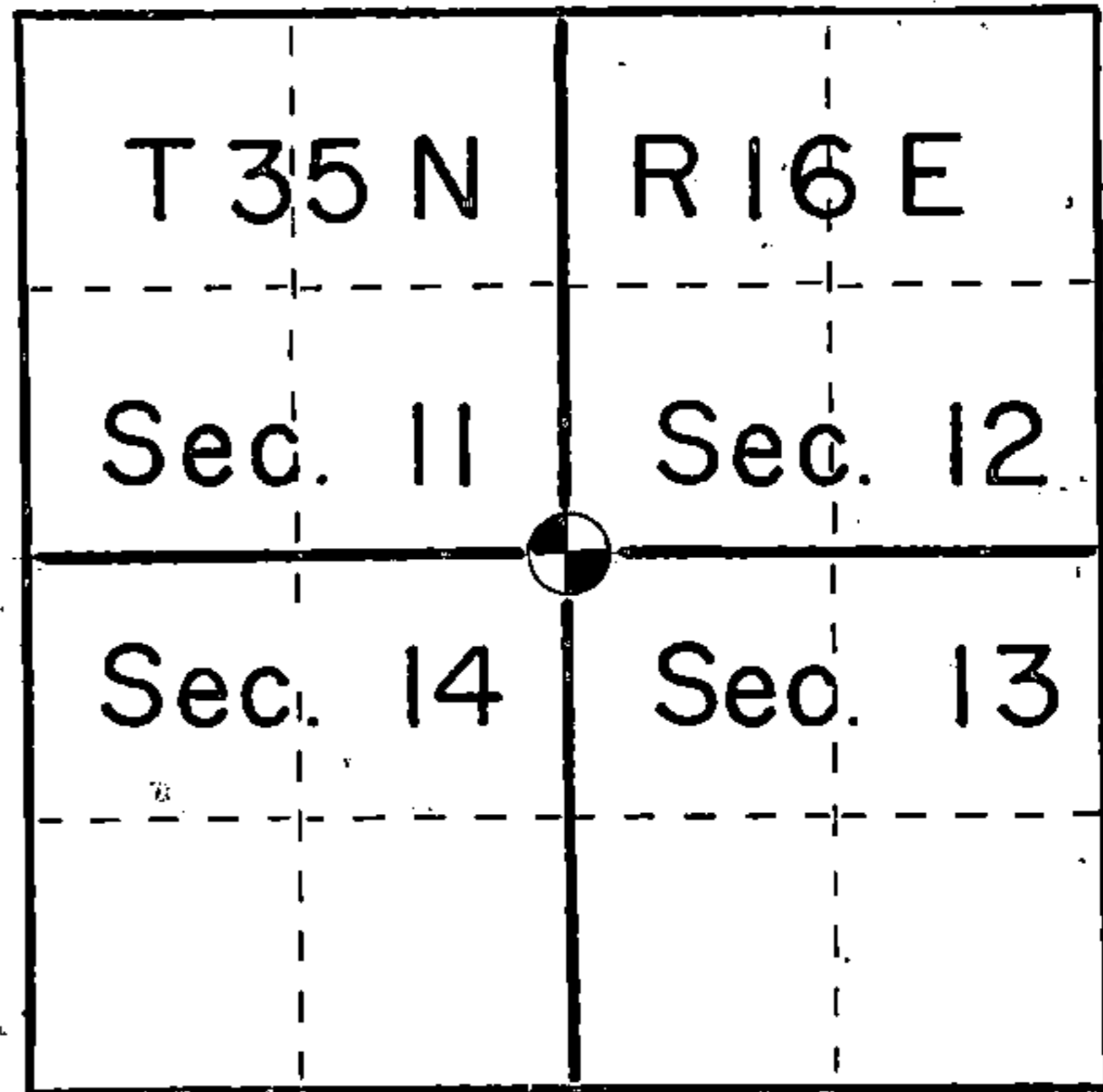


U. S. PUBLIC LAND SURVEY MONUMENT RECORD

INSTRUCTIONS: This record shall show the location of the corner and shall include all of the following nine elements (a through i).

- (a) Identify the corner by reference to the U.S. public land survey system.
- = Corner monument restored.

Section corner to Sections 11-12-13-14, Township 35 North, Range 16 East, Forest County, Wisconsin



REGISTER'S OFFICE }
 Forest County, Wis. }
 Received for record this 7th day
 of August A.D., 1985 at
3:00 o'clock P.M. and recorded
 in Vol. CORNER RESTORATIONS
 page 21
Paul Aschenbrenner
 Register of Deeds

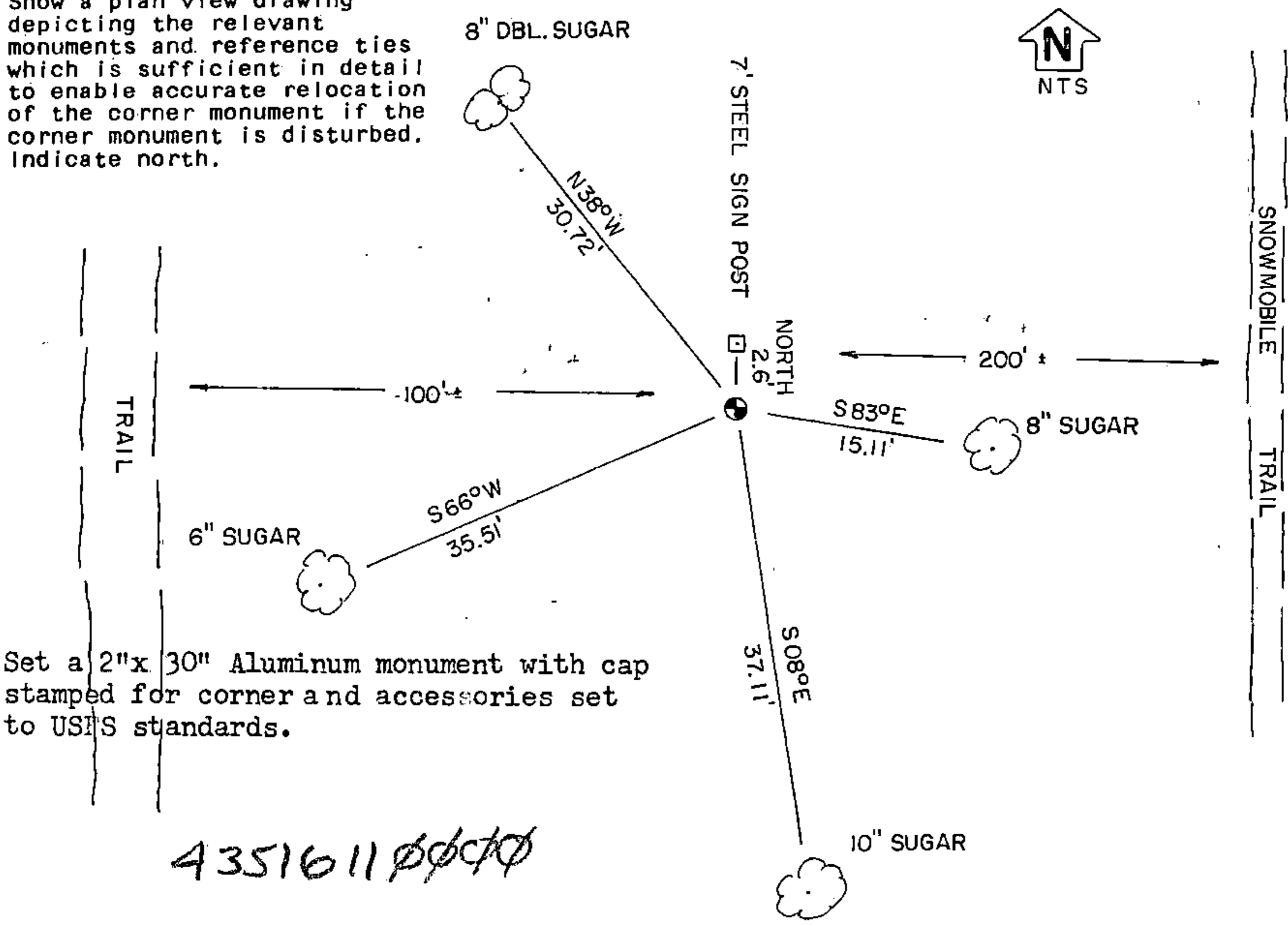
- (b) Describe any record evidence, monument evidence, occupational evidence, testimonial evidence or any other material evidence you considered, and whether the monument was found or placed.

In 1858 James McBride set a wood post with:
 Hemlock 12" N05W 16 links
 Sugar 14" N39E 13 links
 Fir 10" S71E 26 links
 Elm 10" S79W 27 links

Could not find any original or subsequent evidence of this corner. It was determined to be lost and was set by double proportionate measure from the quarter corner to 11-14; the Section corner to 12-13-7-18; the Section corner to 13-14-23-24; and the Section corner to 1-2-11-12.

- (c) In the plan view drawing below, provide reference ties to at least 4 witness monuments, or, if the location is within a municipality, to at least 2 witness monuments. (Witness monuments shall be made of concrete, natural stone, iron or other equally durable material.) Describe witness monuments.

- (d) Show a plan view drawing depicting the relevant monuments and reference ties which is sufficient in detail to enable accurate relocation of the corner monument if the corner monument is disturbed. Indicate north.



Set a 2"x 30" Aluminum monument with cap stamped for corner and accessories set to USFS standards.

(e) Describe any material discrepancy between the location of the corner as restored or reestablished and the location of that corner as previously restored or reestablished by distance and direction. Show the discrepancy on the plan view drawing under (d), above. Show the distances between the corner as previously restored or reestablished and (1) the corner as restored or reestablished, and (2) to at least 2 of the witness monuments shown on the drawing in (d), above.

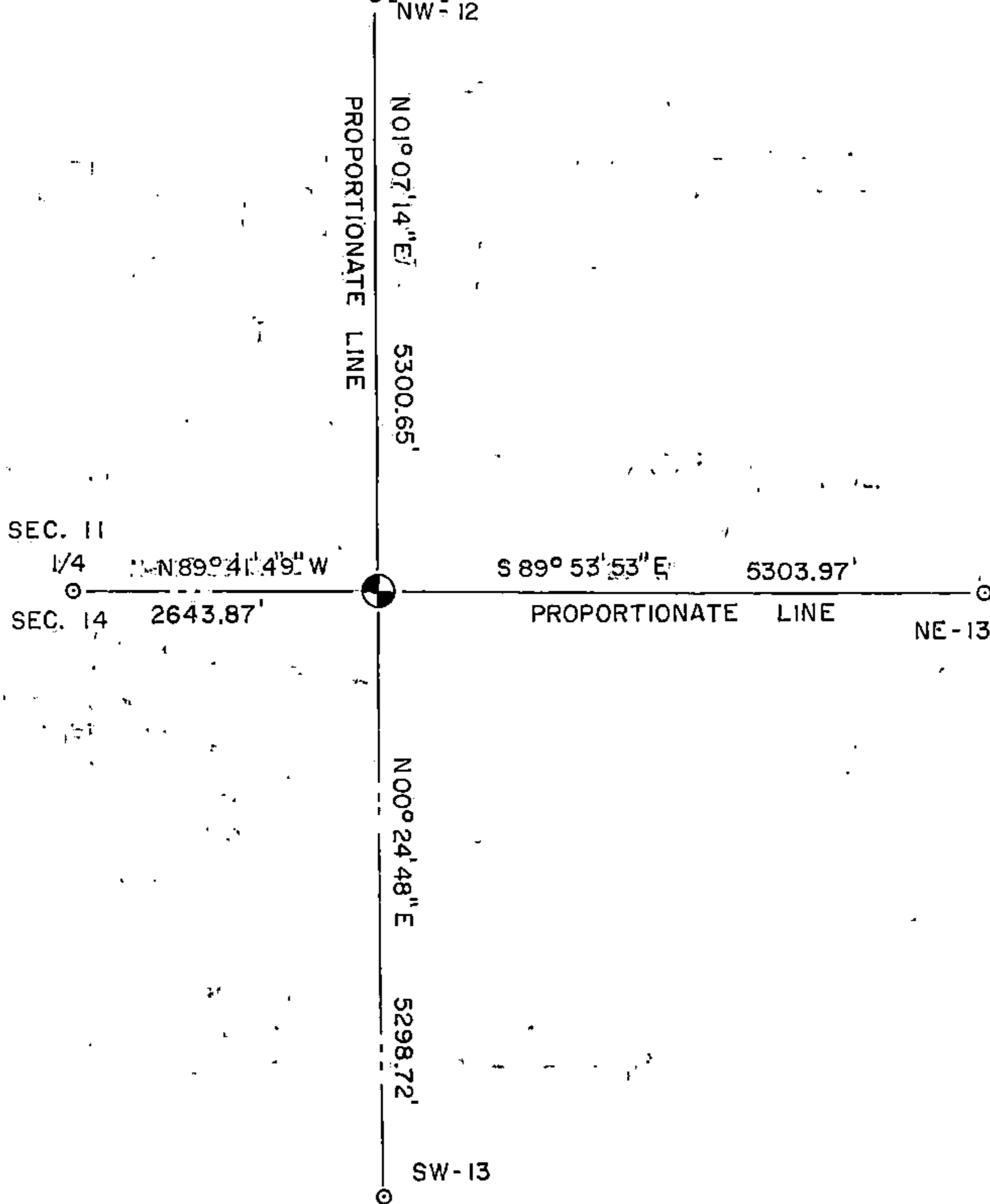
No discrepancy

(f) Was the corner restored through acceptance of (1) an obliterated evidence location, or, (2) a found perpetuated location?

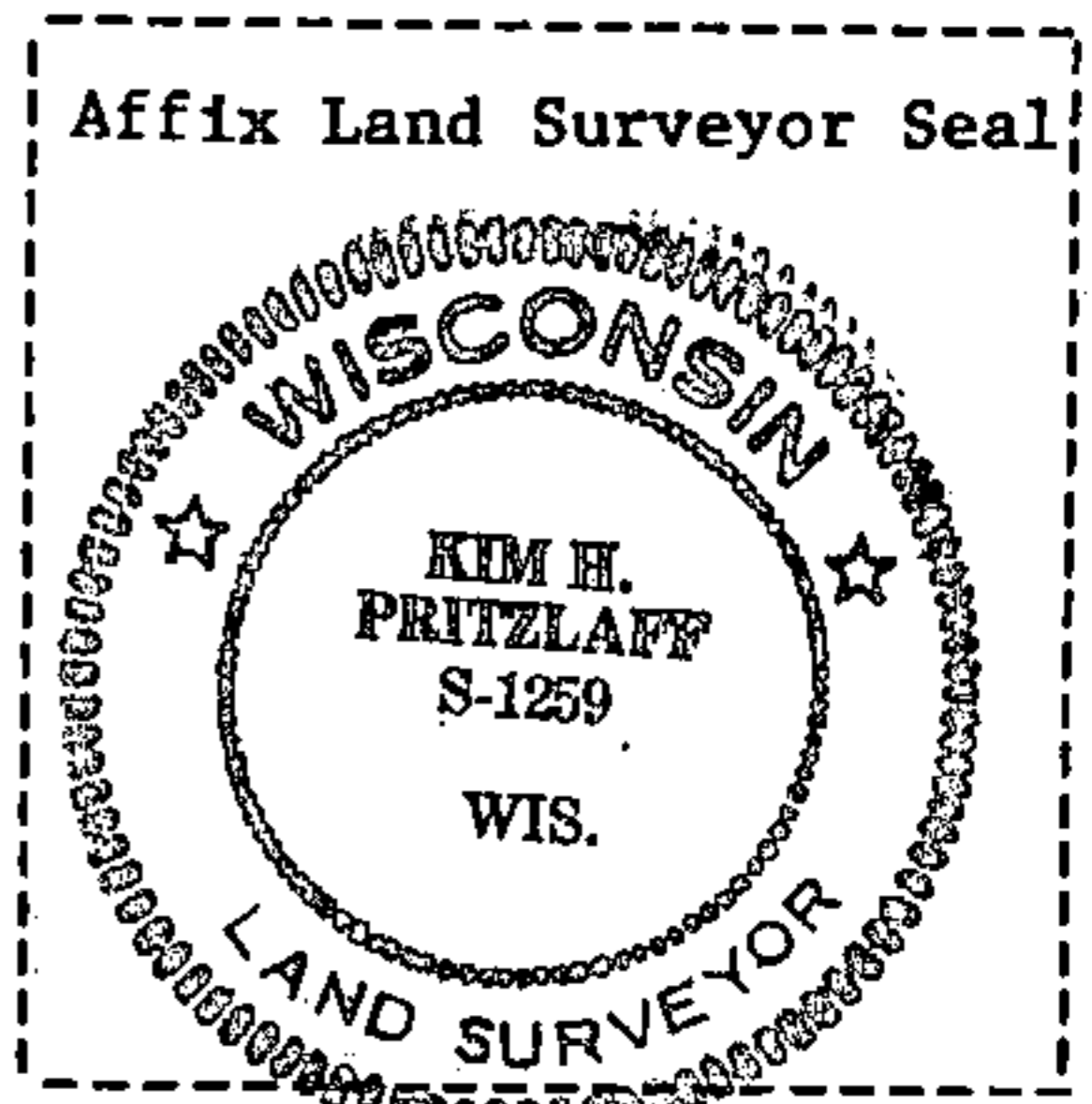
Obliterated evidence location

(g&h) Was the corner reestablished through lost corner proportionate methods? If so, show the method, including the directions and distances to other public land survey corners used as evidence or used for proportioning in determining the corner location?

Lost methods of double proportionate measure as shown:



Kim H Pritzlaff



(i) I, Kim H Pritzlaff (type or print name) certify that the corner location shown on this record was determined by me or under my direction and control and that this U.S. Public Land Survey Monument Record is correct and complete to the best of my knowledge and belief.

Kim Pritzlaff
Signature

5-16-85
Date