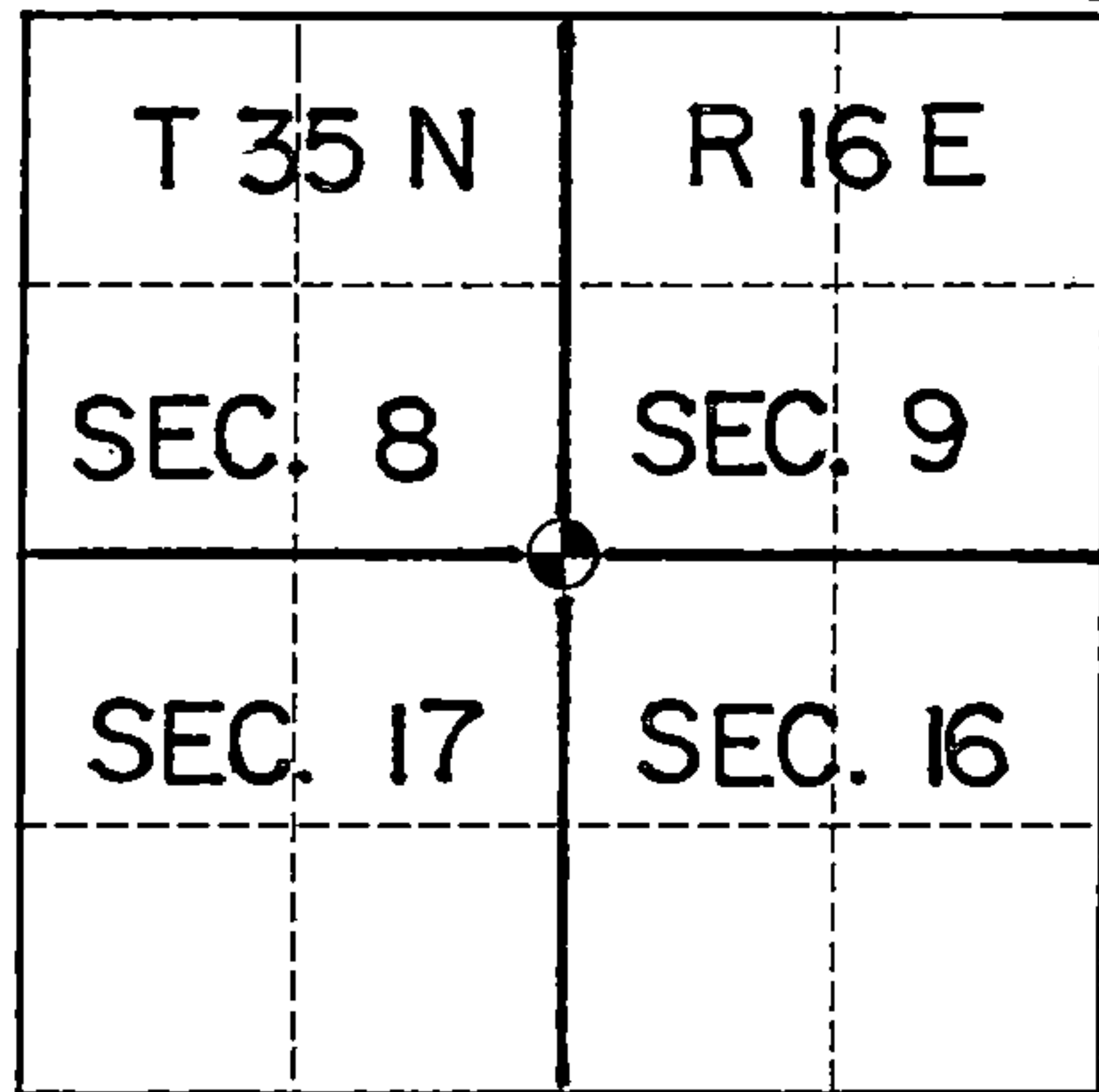


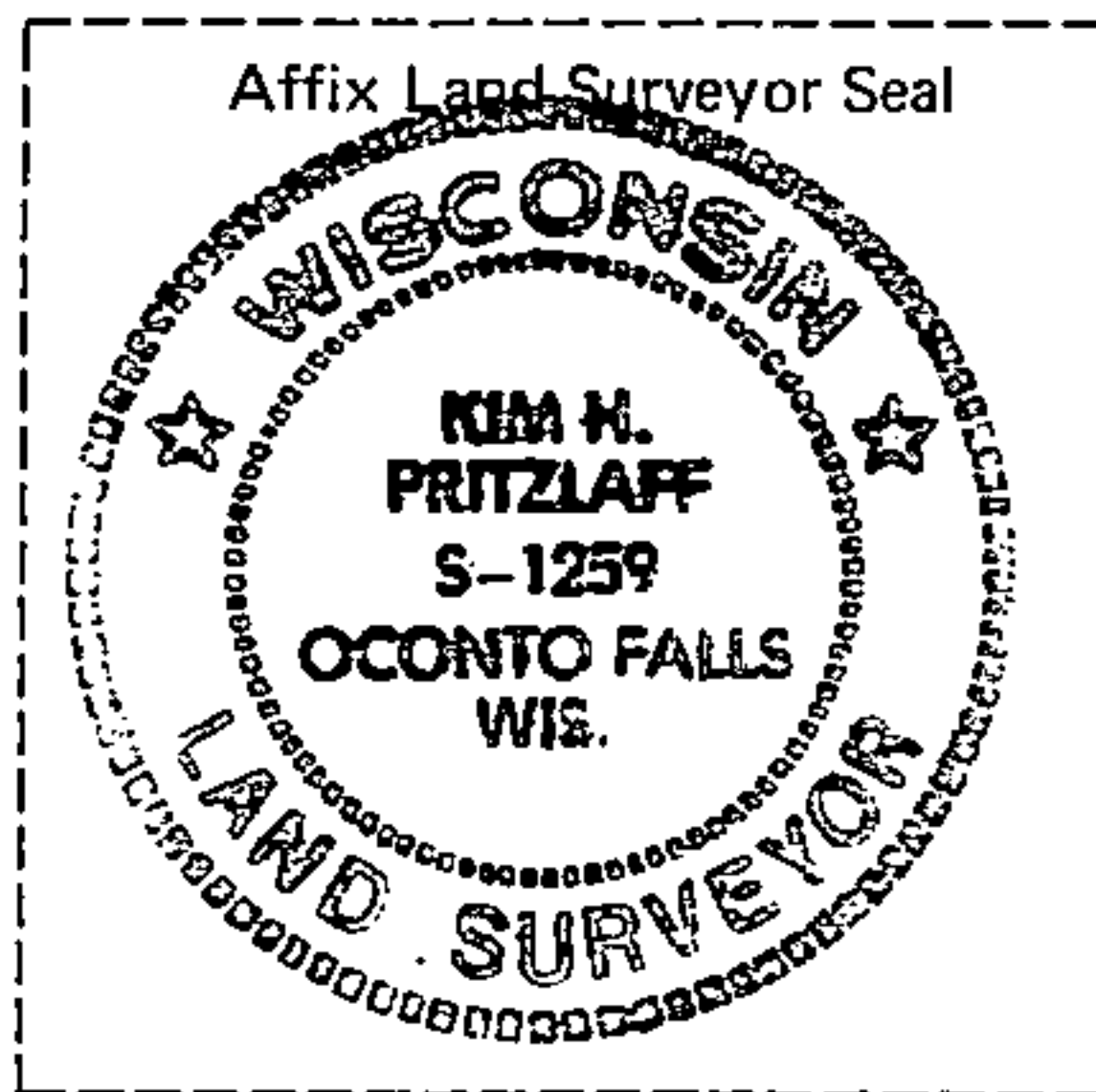
# U. S. PUBLIC LAND SURVEY MONUMENT RECORD

INDEX NO. J-9

Section \_\_\_\_\_ Corner to Section 8 9 T 35N, R 16E  
(Section/Quarter) 16 17



○ = Corner monument restored.



Set this corner position with a railroad spike set in the pavement and a 2" x 36" aluminum post North 25.00 ft. as a Reference Monument. Other ties are to aluminum nails driven into the tree centers, which trees were blazed and scribed. Bearings are magnetic.

History of original corner establishment, record evidence, monument evidence, occupational evidence, testimonial evidence or any other material evidence, and what you found and how the monument was set.

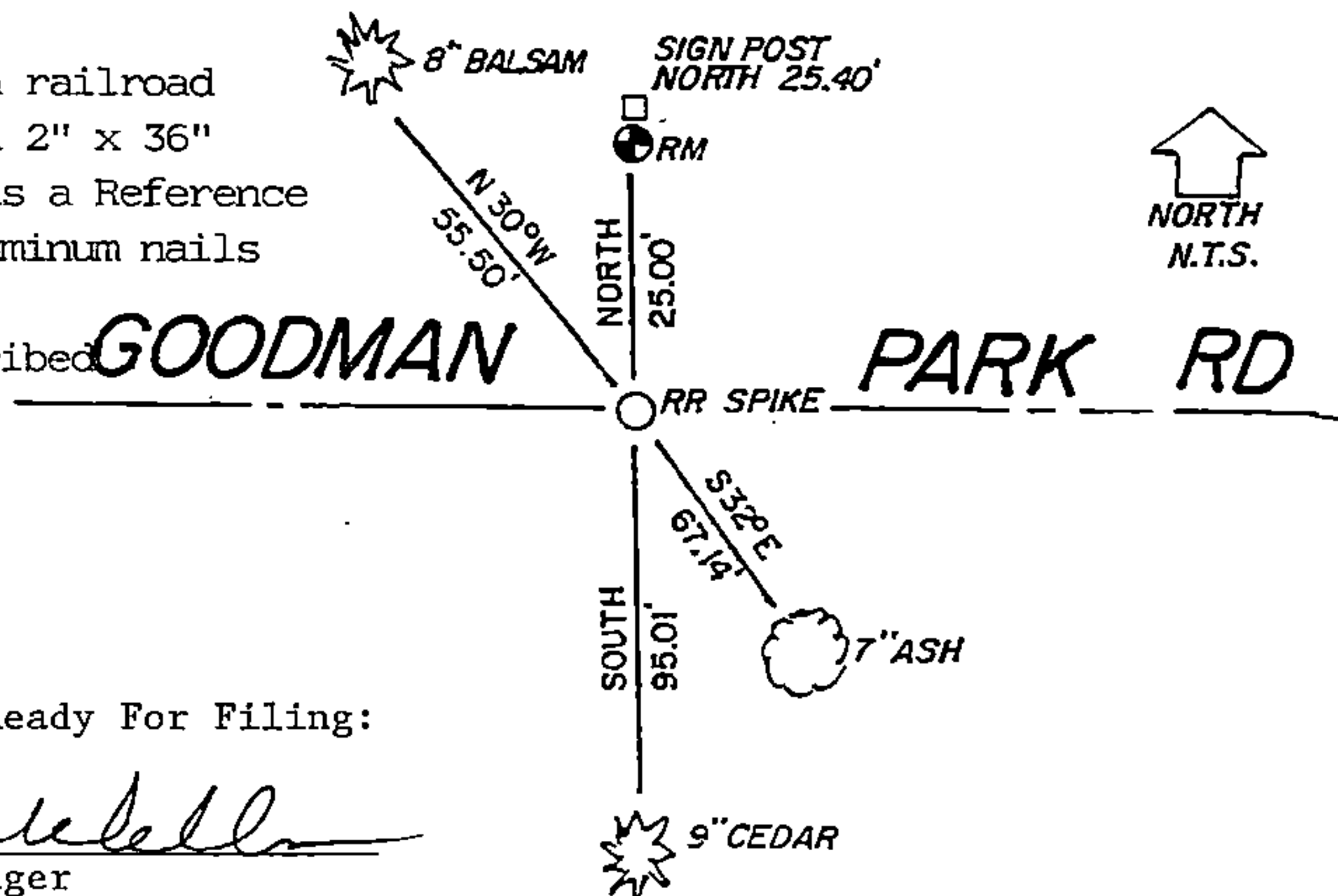
In 1858 James McBride set this corner position at 80 chains with the following bearing trees:

Birch	20"	N37W	15
Sugar	10"	N16E	55
Sugar	10"	S53E	17
Birch	8"	S47W	13

Natural feature calls to the east of enter swamp at 58 chains, Stream at 74.75 chains, Leave swamp at 76.00 chains on line between sections 9 and 16 running West corrected.

The natural feature calls could not agree within a couple of chains. I therefore used the centerline of Goodman Park Road as the north-south control and proportioned the distance between the northwest corner of section 17 and the south quarter corner of section 9 for east-west control.

In the plan view drawing below, provide reference ties to at least 4 witness monuments, or, if the location is within a municipality, to at least 2 witness monuments. (Witness monuments shall be made of concrete, natural stone, iron or other equally durable material, except wood other than bearing trees.) Also, show any material discrepancies between the corner restored or re-established and the location of any other previous corner location or occupation.



I, Kim H Pritzlaff, RLS No. 1259  
(Type or print name) certify that the corner location shown on this record was determined by me or under my direction and control and that this U.S. Public Land Survey Monument Record is correct and complete to the best of my knowledge and belief.

*Kim Pritzlaff*  
Signature

Certificate Ready For Filing:

1993 *Ralph Mella*  
Date *Acting* District Ranger

149056

43516080000

10-11-93

REGISTER'S OFFICE  
FOREST COUNTY, WIS.

FILED  
NOV 23 1993

At 9 O'clock A.M.  
Paul A. Schenck Register of Deeds