

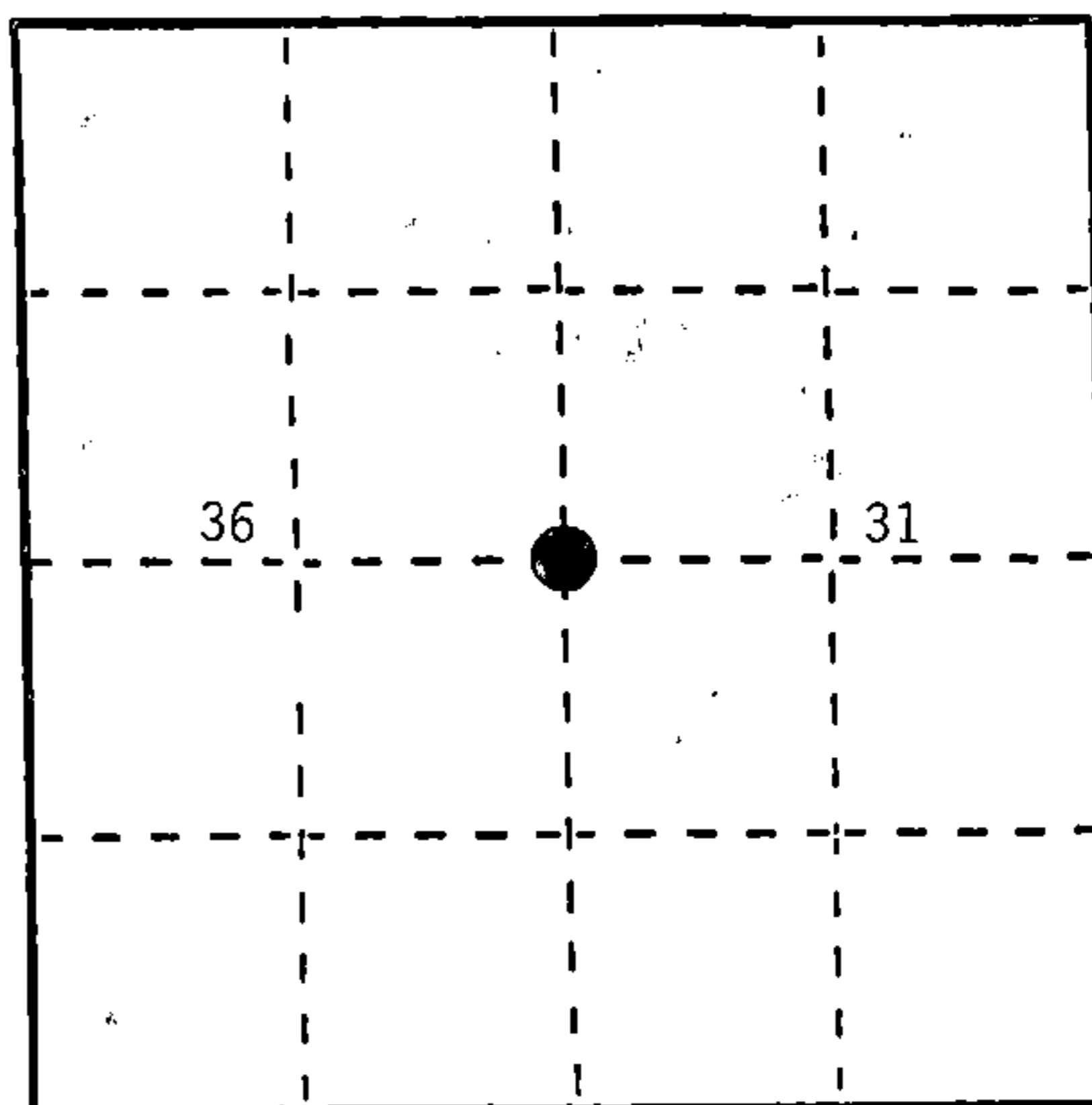
## U. S. PUBLIC LAND SURVEY MONUMENT RECORD

**INSTRUCTIONS:** This record shall show the location of the corner and shall include all of the following nine elements (a through i).

- (a) Identify the corner by reference to the U.S. public land survey system.

○ = Corner monument restored.

Quarter corner to Sections 36 and 31,  
T.35N., R15 & 16E., Forest County, Wisconsin.



REGISTER'S OFFICE  
Forest County, Wis.

Received for record this 10<sup>th</sup> day  
of May, A.D., 1989 at  
9:35 o'clock A.M. and recorded  
in Vol. CORNER RESTORATIONS  
page X-25.

Register of Deeds

- (b) Describe any record evidence, monument evidence, occupational evidence, testimonial evidence or any other material evidence you considered, and whether the monument was found or placed.

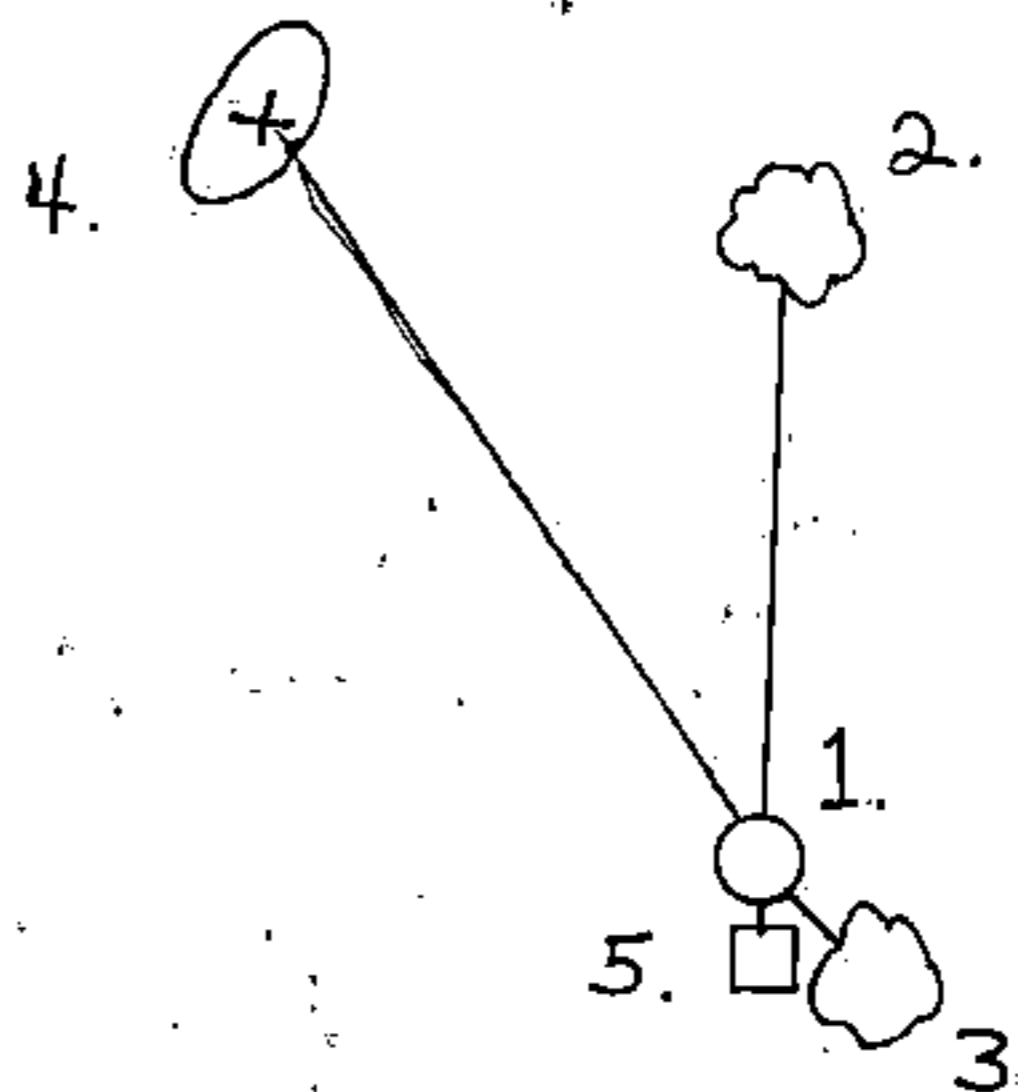
In 1857, Artemas Curtis, set wood post with the following Bts: Yellow Birch, 11", N47W., 27 links; Hemlock, 14", S24E., 28 links.

In 1988, Al Harrison, found a 5"x 5" squared top of a cedar post 18" long. Found post hole with wood fragments vertical in hole. No original B.T. remains were recovered. Accepted post hole as the best available evidence of corner location.

- (c) In the plan view drawing below, provide reference ties to at least 4 witness monuments, or, if the location is within a municipality, to at least 2 witness monuments. (Witness monuments shall be made of concrete, natural stone, iron or other equally durable material.) Describe witness monuments.

- (d) Show a plan view drawing depicting the relevant monuments and reference ties which is sufficient in detail to enable accurate relocation of the corner monument if the corner monument is disturbed. Indicate north.

1. 2½" x 36" aluminum monument stamped to identify the corner.
2. Red Maple, 4", N.03E., 24.88 feet
3. Balsam, 7", S.45E., 3.32 feet
4. "X" chisled on rock, 4½' x 5' x 6', N.26W., 36.75 feet
5. Steel Sign Post, 6', South, 0.60 feet



(e) Describe any material discrepancy between the location of the corner as restored or reestablished and the location of that corner as previously restored or reestablished by distance and direction. Show the discrepancy on the plan view drawing under (d), above. Show the distances between the corner as previously restored or reestablished and (1) the corner as restored or reestablished, and (2) to at least 2 of the witness monuments shown on the drawing in (d), above.

None.

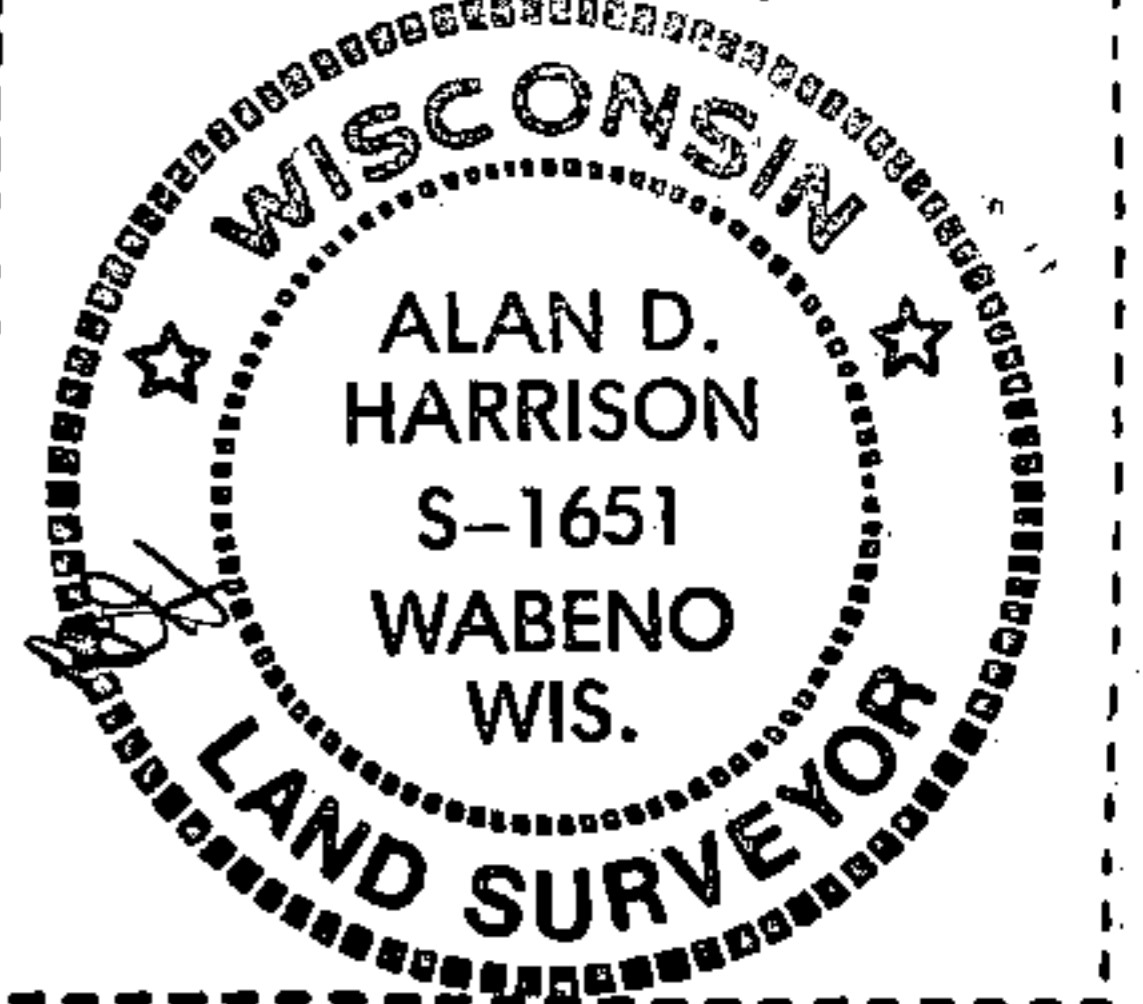
(f) Was the corner restored through acceptance of (1) an obliterated evidence location, or, (2) a found perpetuated location?

a found perpetuated location.

(g&h) Was the corner reestablished through lost corner proportionate methods? If so, show the method, including the directions and distances to other public land survey corners used as evidence or used for proportioning in determining the corner location?

No.

Affix Land Surveyor Seal



(i) Alan D. Harrison  
(type or print name) certify that the corner location shown on this record was determined by me or under my direction and control and that this U.S. Public Land Survey Monument Record is correct and complete to the best of my knowledge and belief.

Signature

Date

Certificate ready for filing.

Dale S. Stage  
District Ranger