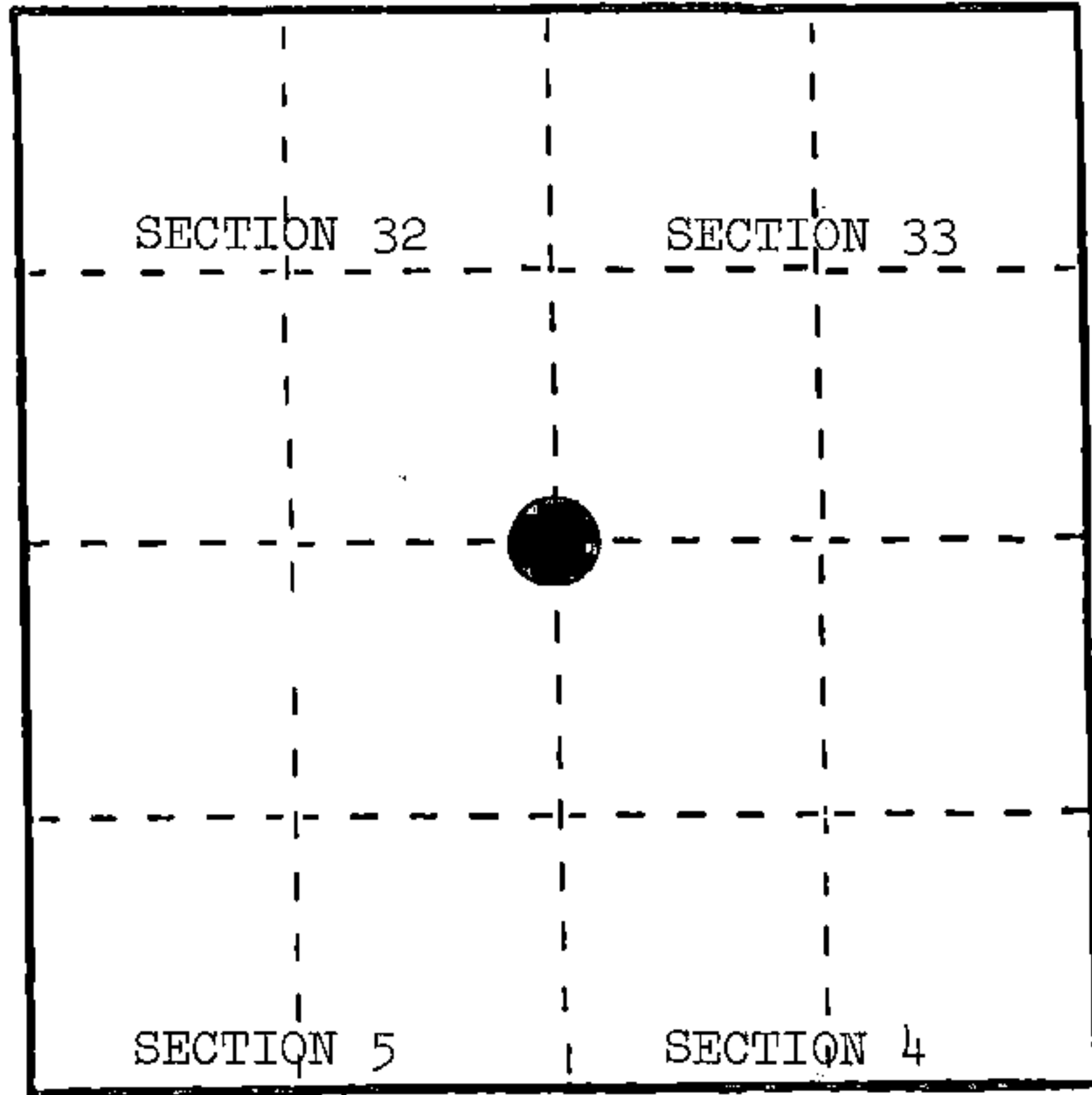


U. S. PUBLIC LAND SURVEY MONUMENT RECORD

INSTRUCTIONS: This record shall show the location of the corner and shall include all of the following nine elements (a through i).

- (a) Identify the corner by reference to the U.S. public land survey system.
○ = Corner monument restored.

Corner common to Sections 4-5-32-33, T.34-35N., R.15E., Forest County, Wisconsin.



REGISTER'S OFFICE }
Forest County, Wis. } *9th*
Received for record this... day
of... *JUNE*... A. D., 19*88* at
8:45... o'clock... *A*... M. and
recorded in Vol. *CORNER RESTORATIONS* of records
on page *A-9*...
Paul Aschambrenner
REGISTER

- (b) Describe any record evidence, monument evidence, occupational evidence, testimonial evidence or any other material evidence you considered, and whether the monument was found or placed.

In 1857, A. Curtis set wood post for section corner and made the following BTs: Sugar, 12", N.67°W., 47 links; Sugar, 10", N.56°E., 41 links; Yellow Birch, 11", S.33°W., 17 links; Elm, size unknown, S.64°E., 18 links.

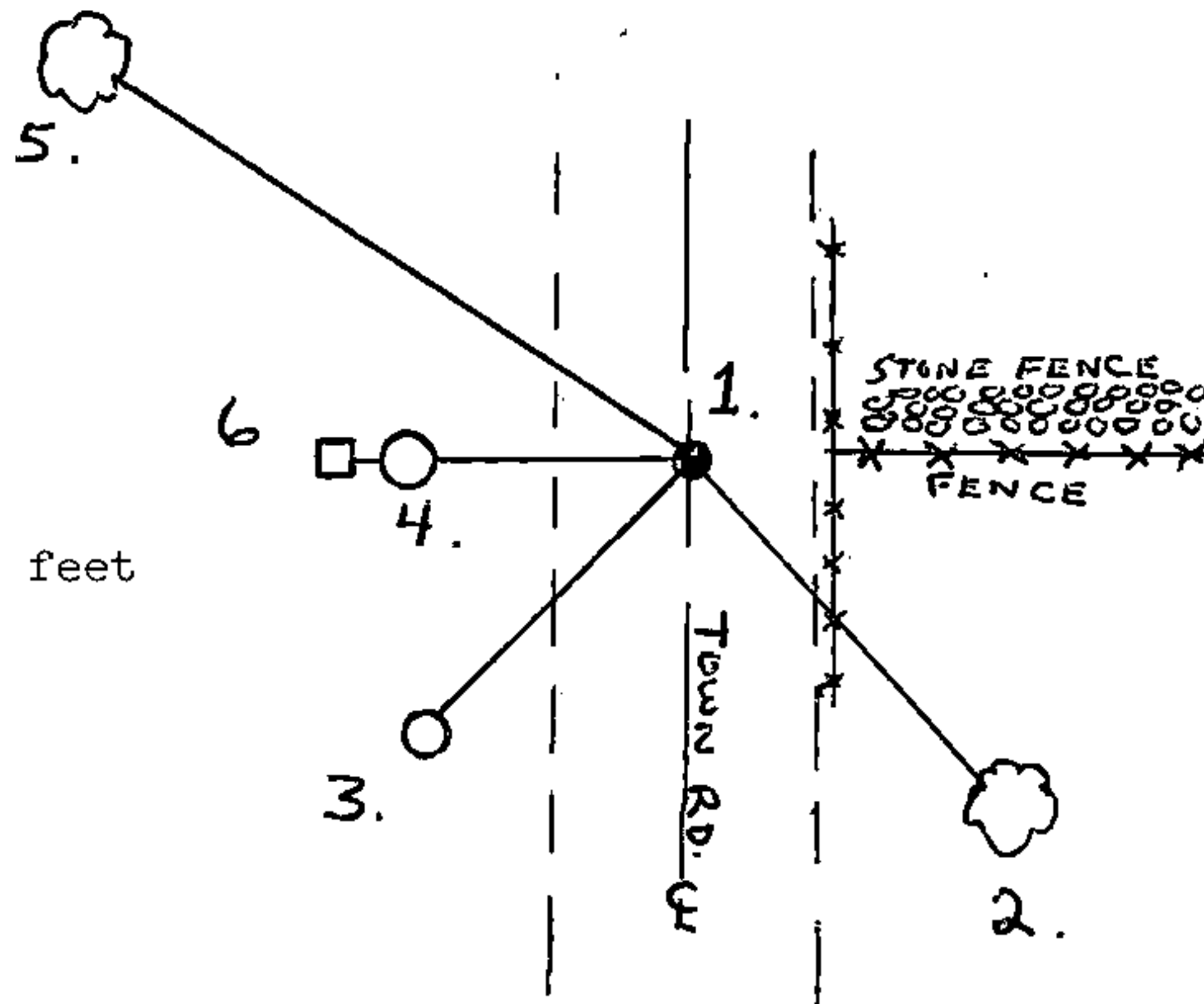
In May, 1908, J. Melendy found post by someone, set new Elm post, 5" x 5", in stones, original Elm, S.64°E., 17 links, other bearings blown out of road. Set Elm post, 5" x 5", 2 rods east.

In April, 1988, Alan Harrison found fence line east and road centerlines running to north, south, and west. Set point and traversed to 1/4 corner south, 1/2 mile. Distance south is 7.5' short. Landowner to the northeast remembers post in old road at location of traverse station set and iron pipe on east side of road. Could not locate iron pipe on road edge. Position of traverse station accepted as best corner location and set iron pipe to mark corner location.

- (c) In the plan view drawing below, provide reference ties to at least 4 witness monuments, or, if the location is within a municipality, to at least 2 witness monuments. (Witness monuments shall be made of concrete, natural stone, iron or other equally durable material.) Describe witness monuments.

- (d) Show a plan view drawing depicting the relevant monuments and reference ties which is sufficient in detail to enable accurate relocation of the corner monument if the corner monument is disturbed. Indicate north.

1. 1 1/2" x 30" iron pipe, 6"± below road surface.
2. Sugar, 10", S.38°E., 43.23 feet
3. Power Pole #3415-5E30, S.47°W., 36.14 feet
4. Witness Corner Monument, 2 1/2" x 36", West, 33.00 feet
5. Sugar, 9", N.52°W., 76.08 feet
6. Steel Sign Post, West, 34.15 feet



A-9

(e) Describe any material discrepancy between the location of the corner as restored or reestablished and the location of that corner as previously restored or reestablished by distance and direction. Show the discrepancy on the plan view drawing under (d), above. Show the distances between the corner as previously restored or reestablished and (1) the corner as restored or reestablished, and (2) to at least 2 of the witness monuments shown on the drawing in (d), above.

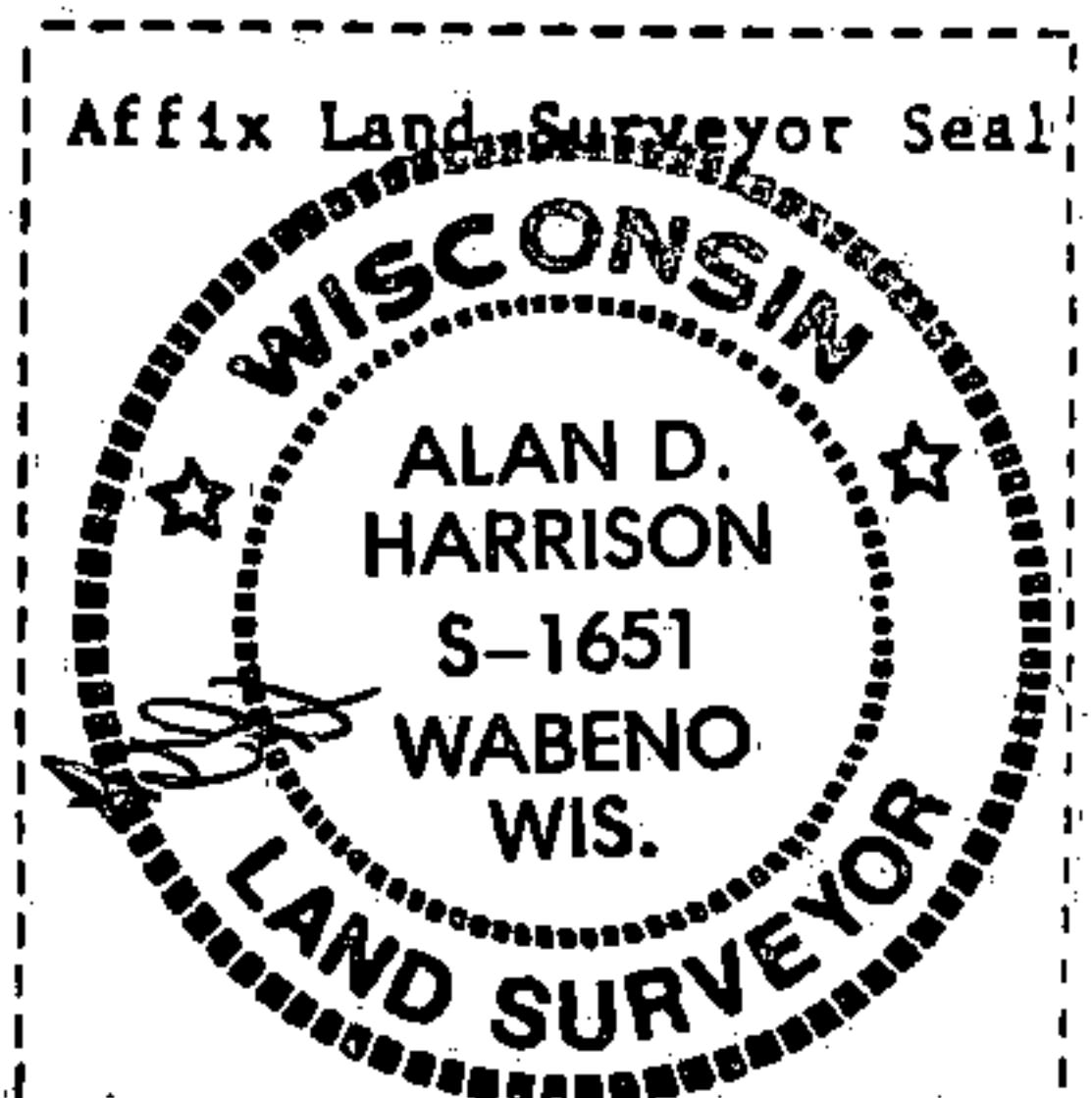
Distance south to East $\frac{1}{4}$ corner, Section 5, by Melendy was 2329.14'. Measure by Forest Service is 2321.59'.

(f) Was the corner restored through acceptance of (1) an obliterated evidence location, or, (2) a found perpetuated location?

(1) an obliterated evidence location.

(g&h) Was the corner reestablished through lost corner proportionate methods? If so, show the method, including the directions and distances to other public land survey corners used as evidence or used for proportioning in determining the corner location?

No.



(1) I, Alan D. Harrison
(type or print name) certify that the corner location shown on this record was determined by me or under my direction and control and that this U.S. Public Land Survey Monument Record is correct and complete to the best of my knowledge and belief.

Alan D. Harrison 5/31/88
Signature Date

Certificate ready for filing: Paul S. Stagg
District Ranger

Document Number

191718

REGISTER'S OFFICE
Forest County, Wis.

Received for record this 3rd day
of AUGUST A.D., 2006 at

8:45 clock A.M. and recorded
in Vol. CORNER RESTORATIONS
page A-9

Zachary J. Stevens
Register of Deeds

U.S. PUBLIC LAND SURVEY MONUMENT RECORD

(AS REQUIRED BY S. A-E 5.02, WI ADM. CODE)

HISTORY OF ORIGINAL CORNER ESTABLISHMENT AND SUBSEQUENT RESTORATIONS AND DESCRIPTION OF ANY RECORD, MONUMENT, OCCUPATIONAL, TESTIMONIAL, OR OTHER EVIDENCE CONSIDERED:

1857 - A. Curtis, Surveyor, set post.

Set the following witnesses:

Sugar Maple 12"	N67°W	47 Links
Sugar Maple 10"	N56°E	41 Links
Yellow Birch 11"	S33°W	17 Links
Elm (Unknown size)	S64°E	18 Links

1908 - J. Melendy found post by someone, set new Elm post, 5" x 5", in stones, original Elm, S63°E, 17 links, other bearings blown out of road. Set Elm post, 5" x 5", 2 rods East.

1988 - U.S. Public Land Survey Monument Record, Document No. #135393. Alan Harrison, Surveyor, S-1651, found fence line East and road centerlines running North, South, and West. Set point and traversed to 1/4 corner South, 1/2 mile. Distance South is 7.5' short. Land owner to the Northeast remembers post in old road at location of traverse station set and iron pipe on East side of road. Could not locate iron pipe on road edge. Position of traverse station accepted as best corner location and set a 1-1/2" x 30" Iron pipe to mark corner location.

Set the following witnesses:

Sugar Maple 10"	S38°E	43.23'
P. Pole #3415-5E30	S47°W	36.14'
Witness Corner Monument	West	33.00'
Sugar Maple 9"	N52°W	76.08'
Steel Sign Post	West	34.15'

2005 - Zachary J. Stevens, Surveyor, S-2467-008, Found a 60d nail 0.5' below grade in gravel road. Replaced nail with a 1" iron pipe w/cap P.S.# S-2467-008.

Found the following witnesses:

Witness monument	N83°W	32.85'	
P. Pole	S83°E	59.98' - set D.H. nail	2636.84' (M), 2636.44' (R) to N 1/4 cor.
Sugar Maple 12"	S38°E	43.08' - set D.H. nail	2320.91' (M), 2322.03' (R) to E 1/4 cor.
Sugar Maple 12"	N77°W	75.88' - set D.H. nail	
Steel sign post	West	34.00'	

CORNER WAS: (CHECK ALL THAT APPLY)

- RESTORED THROUGH ACCEPTANCE OF AN OBLITERATED LOCATION
- RESTORED THROUGH ACCEPTANCE OF A FOUND PERPETUATED LOCATION
- CONSIDERED A LOST CORNER AND REESTABLISHED THROUGH LOST CORNER PROPORTIONATE METHODS (INCLUDING A PLAN VIEW DRAWING SHOWING DISTANCES AND DIRECTIONS TO OTHER PUBLIC LAND SURVEY CORNERS USED FOR PROPORTIONING AND DETERMINING THE CORNER LOCATION)
- RESTORED OF REESTABLISHED IN A LOCATION THAT DIFFERS FROM A PREVIOUS RESTORATION OF REESTABLISHMENT (INCLUDE A PLAN VIEW DRAWING AND INDICATE WHAT WAS SET AND/OR FOUND)

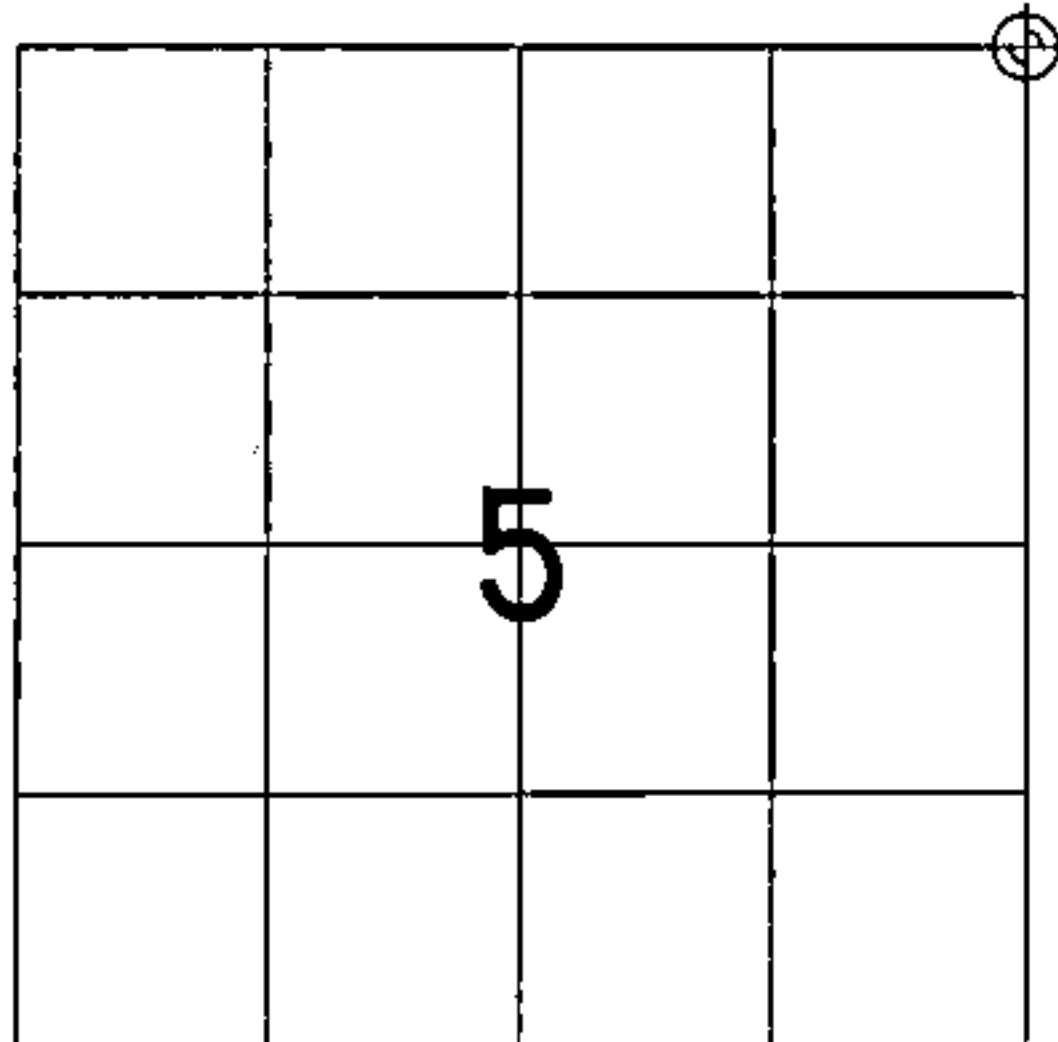
DESCRIBE THE MONUMENT AND ACCESSORIES USED TO PERPETUATE THE LOCATION OF THIS CORNER. (INCLUDE A PLAN VIEW DRAWING AND INDICATE WHAT WAS SET AND/OR FOUND)

2006 - Zachary J. Stevens, Surveyor, S-2467-008, Found 1" iron pipe w/cap P.S.# S-2467-008.

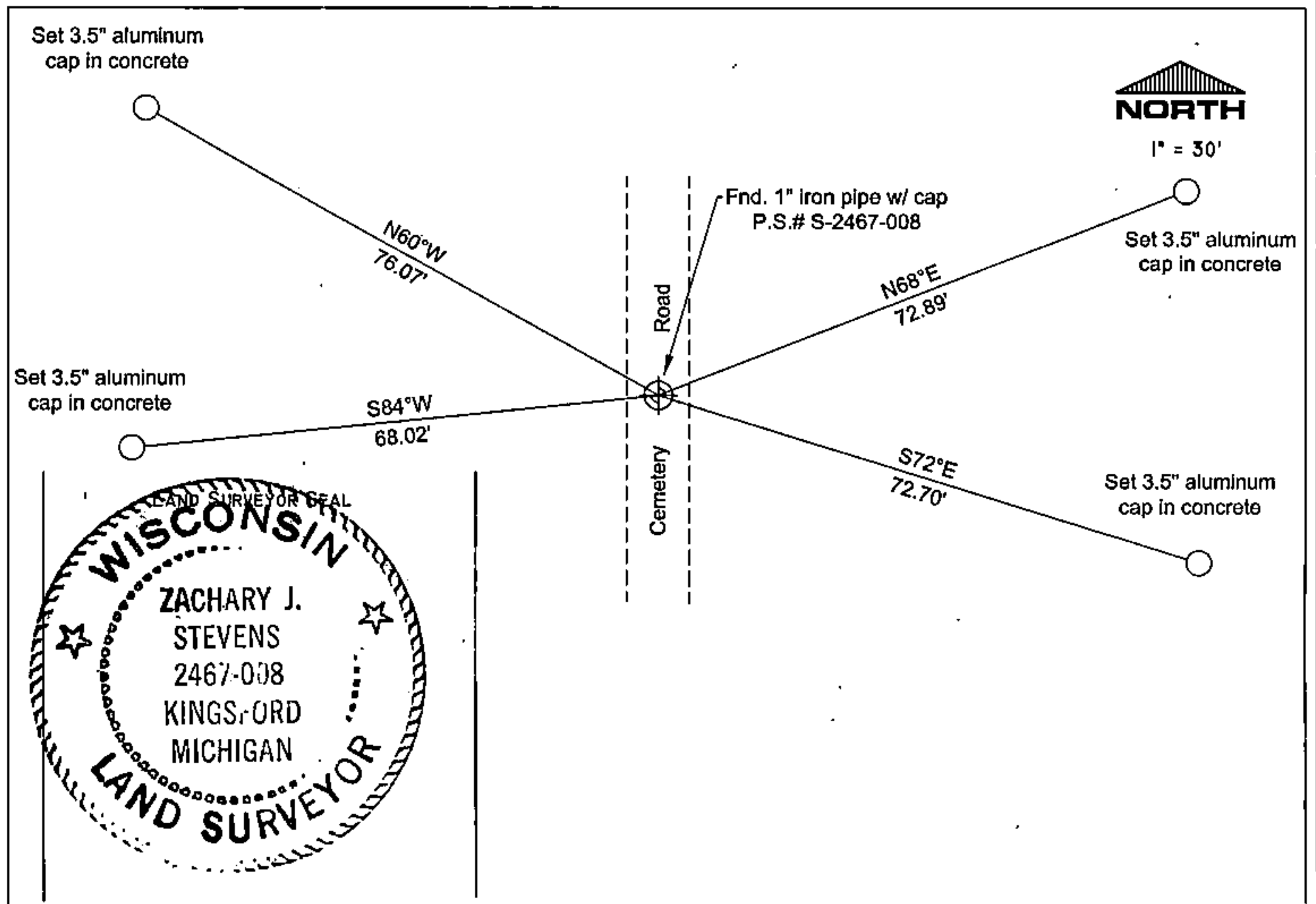
WISDOT set the following witnesses:
Z. Stevens measured the following:

3.5" aluminum cap in concrete	N60°W	76.07'
3.5" aluminum cap in concrete	N68°E	72.89'
3.5" aluminum cap in concrete	S84°W	68.02'
3.5" aluminum cap in concrete	S72°E	72.70'

THE NORTHEAST
CORNER OF SECTION 5,
T. 34 N., R. 15 E.,
FOREST COUNTY, WISCONSIN



⊕ = LOCATION OF CORNER



I, ZACHARY J. STEVENS R.L.S. S-2467-008

(TYPE OR PRINT NAME) CERTIFY THAT THE CORNER LOCATION SHOWN ON THIS ABOVE RECORD WAS DETERMINED BY ME OR UNDER MY DIRECTION AND CONTROL AND THAT THIS U.S. PUBLIC LAND SURVEY MONUMENT RECORD IS CORRECT AND COMPLETE TO THE BEST OF MY KNOWLEDGE AND BELIEF.

INDEX No. A-9

Zachary J. Stevens 7/31/06
SIGNATURE DATE

43515320000

A-9

Received for record this 21st day
of October A.D., 2014 at
9:30 o'clock A.M. and recorded
in Vol. Corner Restoration
page 1-9
Erika Deaton, Deputy
Register of Deeds

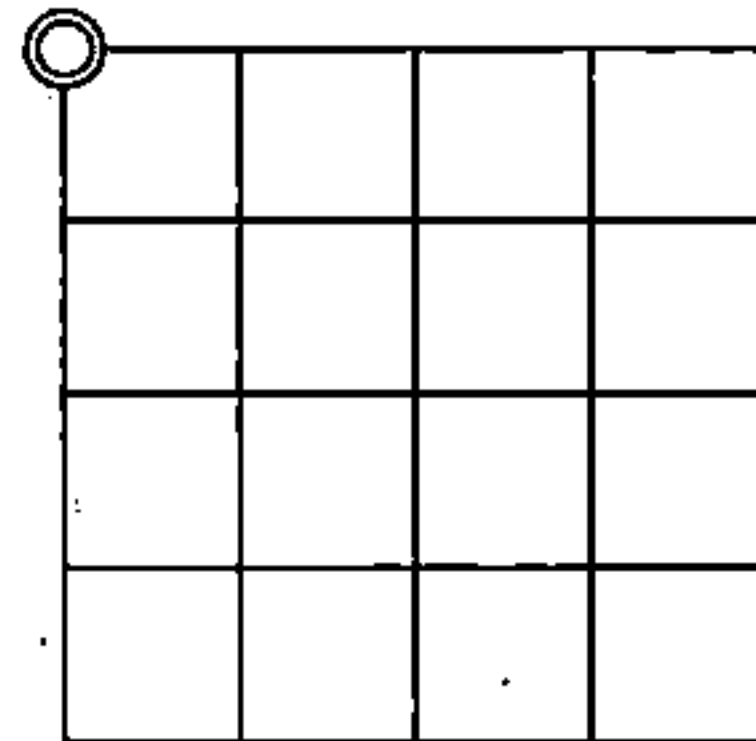
U.S. PUBLIC LAND SURVEY MONUMENT RECORD

Note: This form is intended and designed to fulfill all requirements of Wisconsin Administrative Code, Chapter A-E 7.08 U.S. Public Land Survey Monument Record (3)(a)(b)(c)(d)(e)(f)(g)(h)(i). An additional sheet may be added to if necessary to conform with said requirements.

(a) Corner Location: Township 34 North
Range 15 East

Town of Wabeno

Forest County, Wisconsin



Section 4

(b)(f)(g)(h) Description of monument found at this corner and if it was accepted, state all evidence (material, testimonial, occupational, plats, records, other monuments) used as a basis for accepting. If not accepted or if nothing was found, state evidence used as basis for establishing location. If reestablishment through lost corner proportionate methods, indicate all monuments, distances and directions used to establish. Indicate type of monument found or set and sign post.

March 1857 - Artemis Curtis set post common to corners 4 & 5; T34N, R15E and 32 & 33; T35N, R15E

- Sugar Maple 12" - N67°W 47 links
- Sugar Maple 10" - N56°E 41 links
- Yellow Birch 11" - S33°W 17 links
- Elm - S64°E 18 links

1908 - J. Melendy found post of unknown origin. Replaced with 5"x5" elm post in stones. Found original elm BT, other trees gone. Set additional elm post as reference 2 rods East.

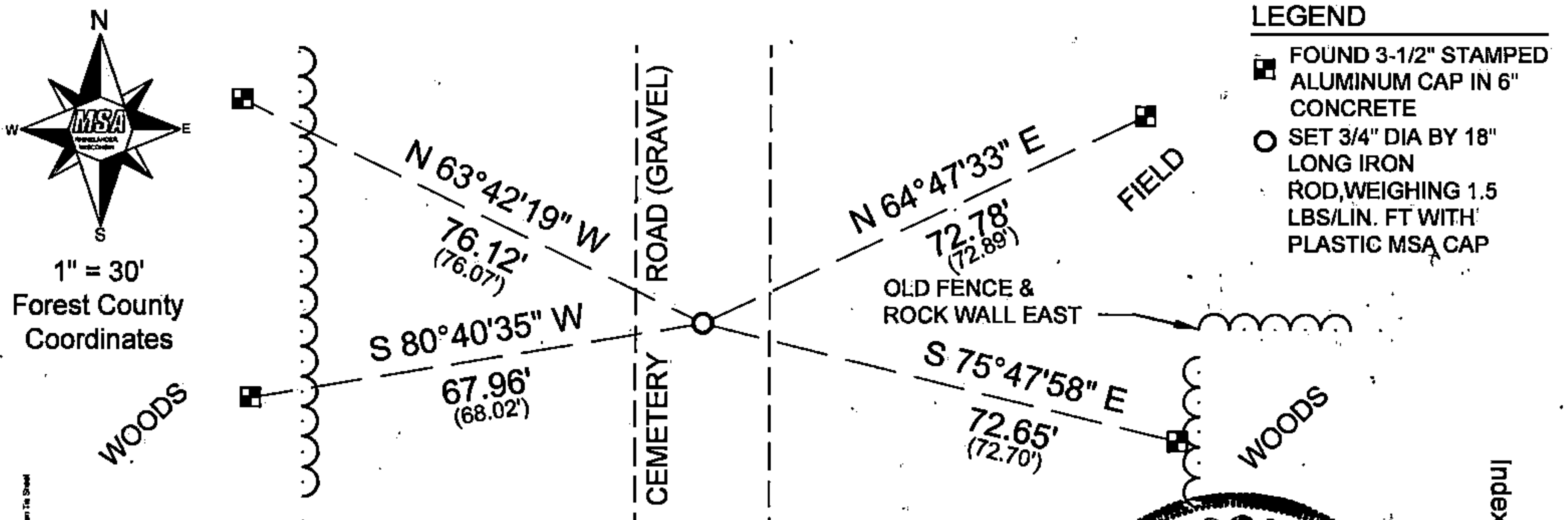
1988 - Alan Harrison subdivided section 4 for a USFS boundary survey. Position falls in centerline of road, didn't find post. Set 1-1/2" dia iron pipe at accepted corner position.

2005 - Zachary Stevens found 60d nail in centerline of road. Replaced with a 1" dia iron pipe with cap.

2006 - Zachary Stevens found 1" dia iron pipe and created new reference ties with WisDOT monuments.

2014 - I found no corner near the centerline of Cemetery Road. I set a 3/4" dia by 18" long iron rod 6" below gravel surface from Zachary Stevens ties and show my best-fit measurements below.

(c)(d)(e) Plan view of corner with ties to at least 4 witness monuments. If in disagreement with previously established corner, show the distances between the two corners and also indicate the ties to the disputed corner.



(i) I, Jeffrey L. DeMuth, Professional Land Surveyor #S-2656, hereby certify that the corner location on this record was determined by me or under my direction and control and that this U.S. Public Land Survey Monument Record is correct and complete to the best of my knowledge and belief.

Signature

Date

10/15/2014



Index No.

A-9

43515320000

Document Number

189332

REGISTER'S OFFICE
Forest County, Wis.

Received for record this 18th day
of November A.D., 2005 at
3:55 o'clock P. M. and recorded
in Vol. Corner Restoration
page A-9

Kay Swanson, Deputy
Register of Deeds

U.S. PUBLIC LAND SURVEY MONUMENT RECORD

(AS REQUIRED BY S. A-E 5.02, WI ADM. CODE)

HISTORY OF ORIGINAL CORNER ESTABLISHMENT AND SUBSEQUENT RESTORATIONS AND DESCRIPTION OF ANY RECORD, MONUMENT, OCCUPATIONAL, TESTIMONIAL, OR OTHER EVIDENCE CONSIDERED:

1857 - A. Curtis, Surveyor, set post.

Set the following witnesses:

Sugar Maple 12"	N67°W	47 LINKS
Sugar Maple 10"	N56°E	41 LINKS
Yellow Birch 11"	S33°W	17 LINKS
Elm (Unknown size)	S64°E	18 LINKS

1908 - J. Melendy found post by someone, set new Elm post, 5" x 5", in stones, original Elm, S63°E, 17 links, other bearings blown out of road. Set Elm post, 5" x 5", 2 rods East.

1988 - U.S. Public Land Survey Monument Record, Document No. #135393. Alan Harrison, Surveyor, S-1651, found fence line East and road centerlines running North, South, and West. Set point and traversed to 1/4 corner South, 1/2 mile. Distance South is 7.5' short. Land owner to the Northeast remembers post in old road at location of traverse station set and iron pipe on East side of road. Could no locate iron pipe on road edge. Position of traverse station accepted as best corner location and set a 1-1/2" x 30" iron pipe to mark corner location.

Set the following witnesses:

Sugar Maple 10"	S38°E	43.23'
P. Pole #3415-5E30	S47°W	36.14'
Witness Corner Monument	West	33.00'
Sugar Maple 9"	N52°W	76.08'
Steel Sign Post	West	34.15'

CORNER WAS: (CHECK ALL THAT APPLY)

- RESTORED THROUGH ACCEPTANCE OF AN OBLITERATED LOCATION
- RESTORED THROUGH ACCEPTANCE OF A FOUND PERPETUATED LOCATION
- CONSIDERED A LOST CORNER AND REESTABLISHED THROUGH LOST CORNER PROPORTIONATE METHODS (INCLUDING A PLAN VIEW DRAWING SHOWING DISTANCES AND DIRECTIONS TO OTHER PUBLIC LAND SURVEY CORNERS USED FOR PROPORTIONING AND DETERMINING THE CORNER LOCATION)
- RESTORED OF REESTABLISHED IN A LOCATION THAT DIFFERS FROM A PREVIOUS RESTORATION OF REESTABLISHMENT (INCLUDE A PLAN VIEW DRAWING AND INDICATE WHAT WAS SET AND/OR FOUND)

DESCRIBE THE MONUMENT AND ACCESSORIES USED TO PERPETUATE THE LOCATION OF THIS CORNER. (INCLUDE A PLAN VIEW DRAWING AND INDICATE WHAT WAS SET AND/OR FOUND)

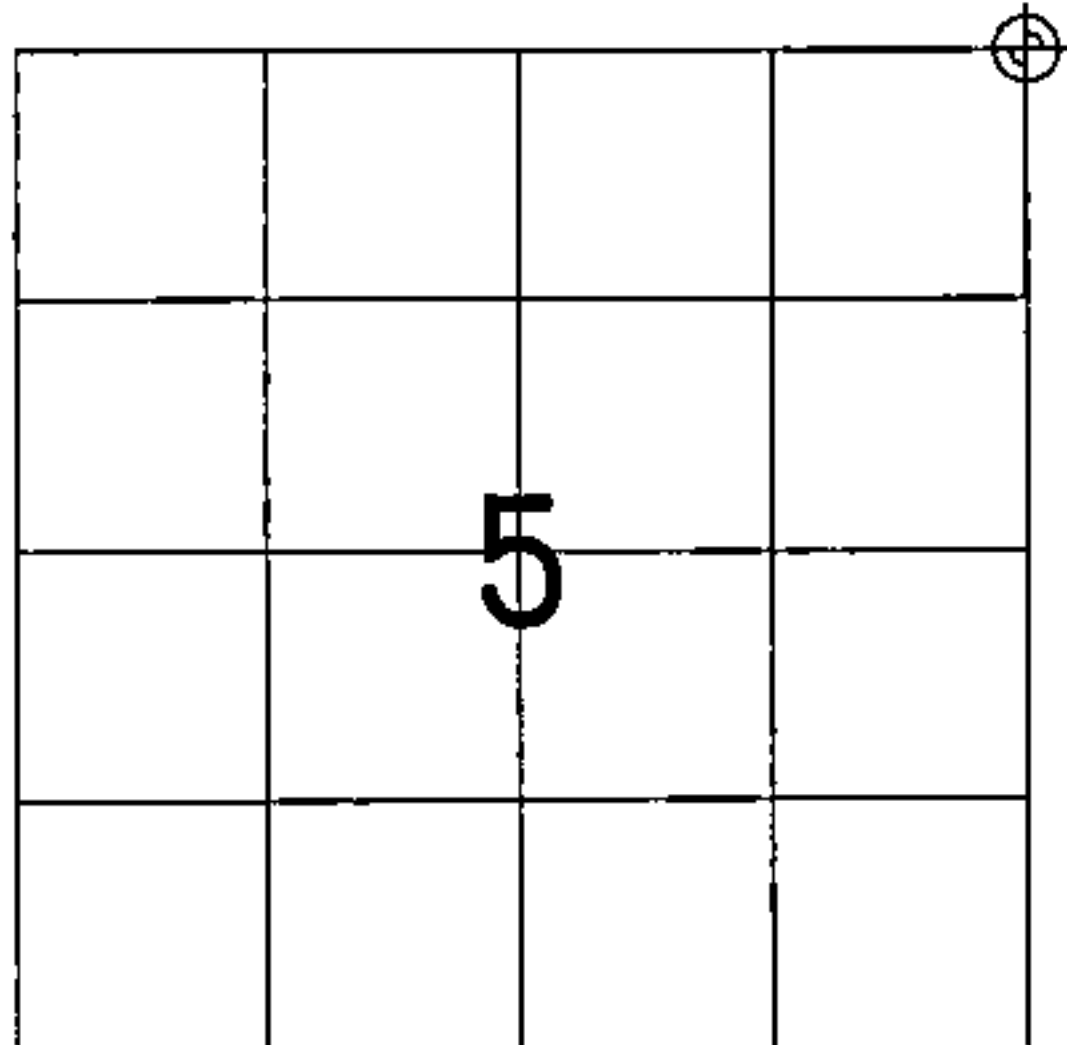
Found a 60d nail 0.5' below grade in gravel road. Replaced nail with a 1" iron pipe w/cap P.S.# S-2467-008.

Found the following witnesses:

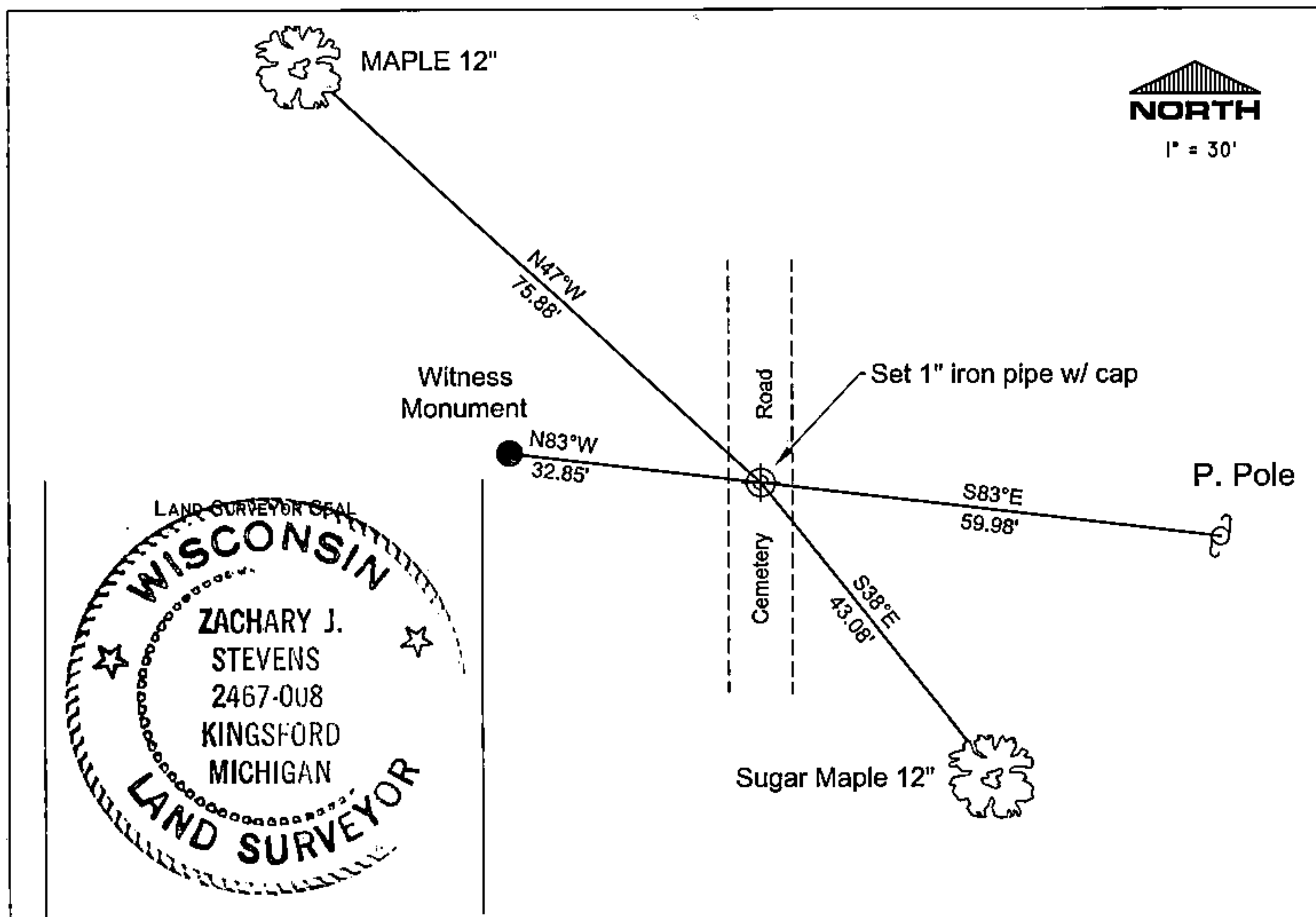
Witness monument	N83°W	32.85'	
P. Pole	S83°E	59.98' - set D.H. nail	2636.84' (M), 2636.44' (R) to N 1/4 cor.
Sugar Maple 12"	S38°E	43.08' - set D.H. nail	2320.91' (M), 2322.03' (R) to E 1/4 cor.
Sugar Maple 12"	N77°W	75.88' - set D.H. nail	
Steel sign post	West	34.00'	

All trees have chest and stump blazes.

THE NORTHEAST
CORNER OF SECTION 5,
T. 34 N., R. 15 E.,
FOREST COUNTY, WISCONSIN



⊕ = LOCATION OF CORNER



I, ZACHARY J. STEVENS R.L.S. 2467-008

(TYPE OR PRINT NAME) CERTIFY THAT THE CORNER LOCATION SHOWN ON THIS ABOVE RECORD WAS DETERMINED BY ME OR UNDER MY DIRECTION AND CONTROL AND THAT THIS U.S. PUBLIC LAND SURVEY MONUMENT RECORD IS CORRECT AND COMPLETE TO THE BEST OF MY KNOWLEDGE AND BELIEF.

INDEX No. A-9

Zachary J. Stevens 11/1/05
SIGNATURE DATE

43515320000

A-9