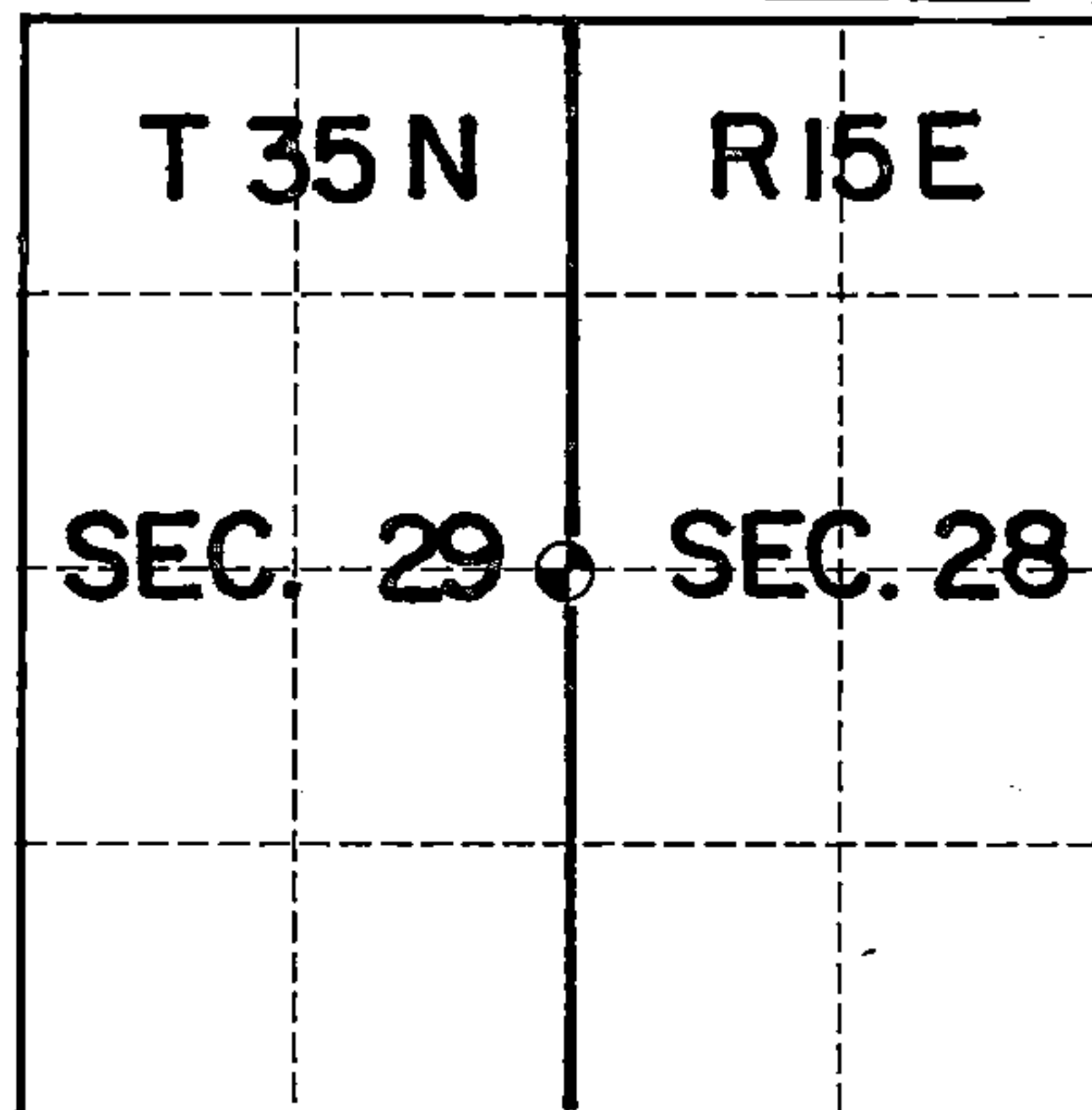


ORT 9

# U. S. PUBLIC LAND SURVEY MONUMENT RECORD

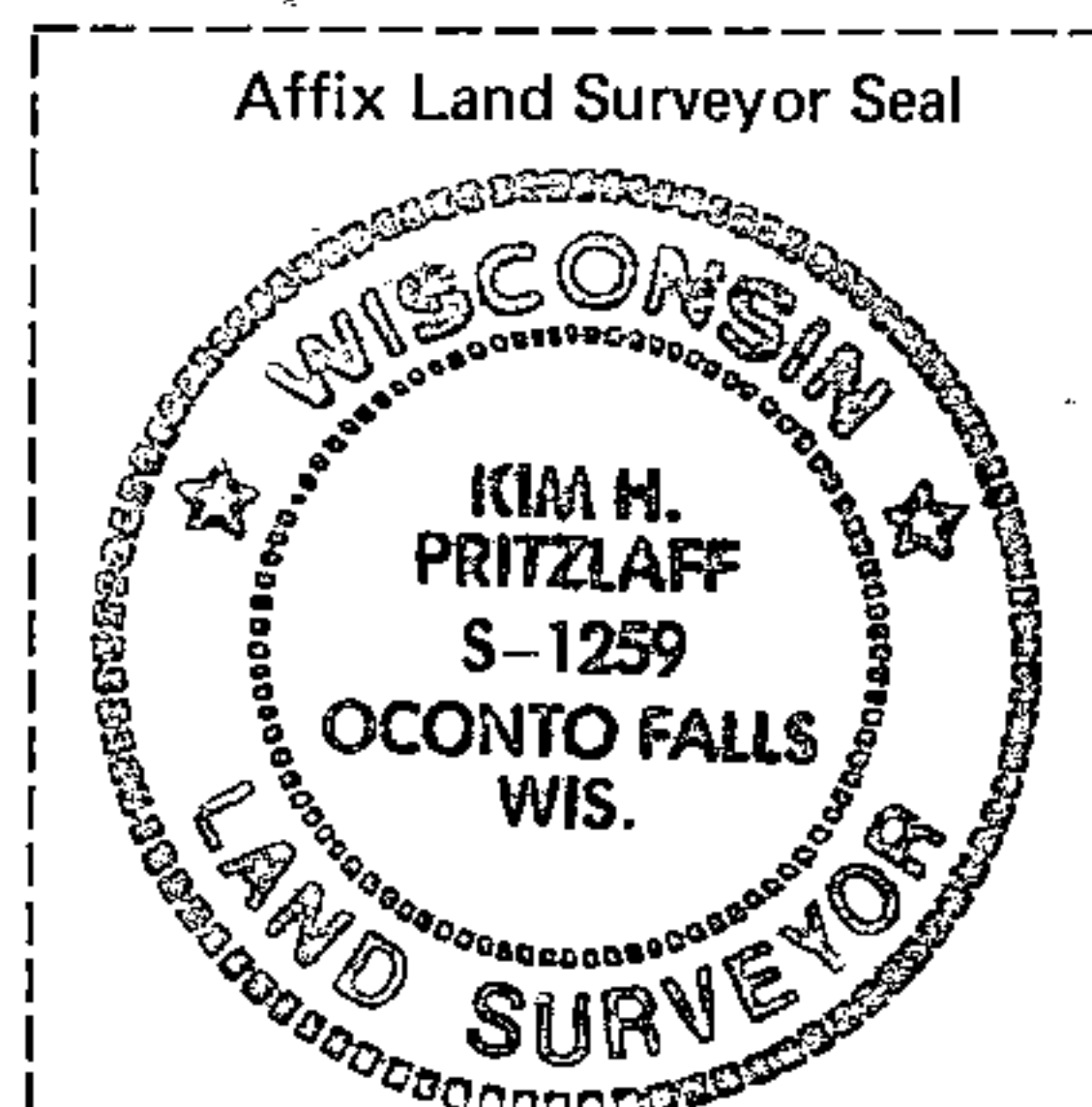
INDEX NO. T-9

QUARTER Corner to Section 29 28 T35N, R15E  
(Section/Quarter)



Show distances and bearings if set by proportional measurement.

○ = Corner monument restored.



CORNER CONSISTS OF 2" ALUMINUM MONUMENT SET IN MOUND OF STONE WITH TIES AS SHOWN BEARINGS ARE MAGNETIC. STEEL SIGN POST BEARS SE, 1.60 FT.

I, KIM H PRITZLAFF, RLS 1991  
(Type or print name) certify that the corner location shown on this record was determined by me or under my direction and control and that this U.S. Public Land Survey Monument Record is correct and complete to the best of my knowledge and belief.

*Kim H Pritzlaff*  
Signature

1991  
Date

History of original corner establishment, record evidence, monument evidence, occupational evidence, testimonial evidence or any other material evidence, and what you found and how the monument was set.

SURVEYED IN 1859 BY JAMES MCBRIDE WHO SET A WOOD POST AT 40.00 CHAINS

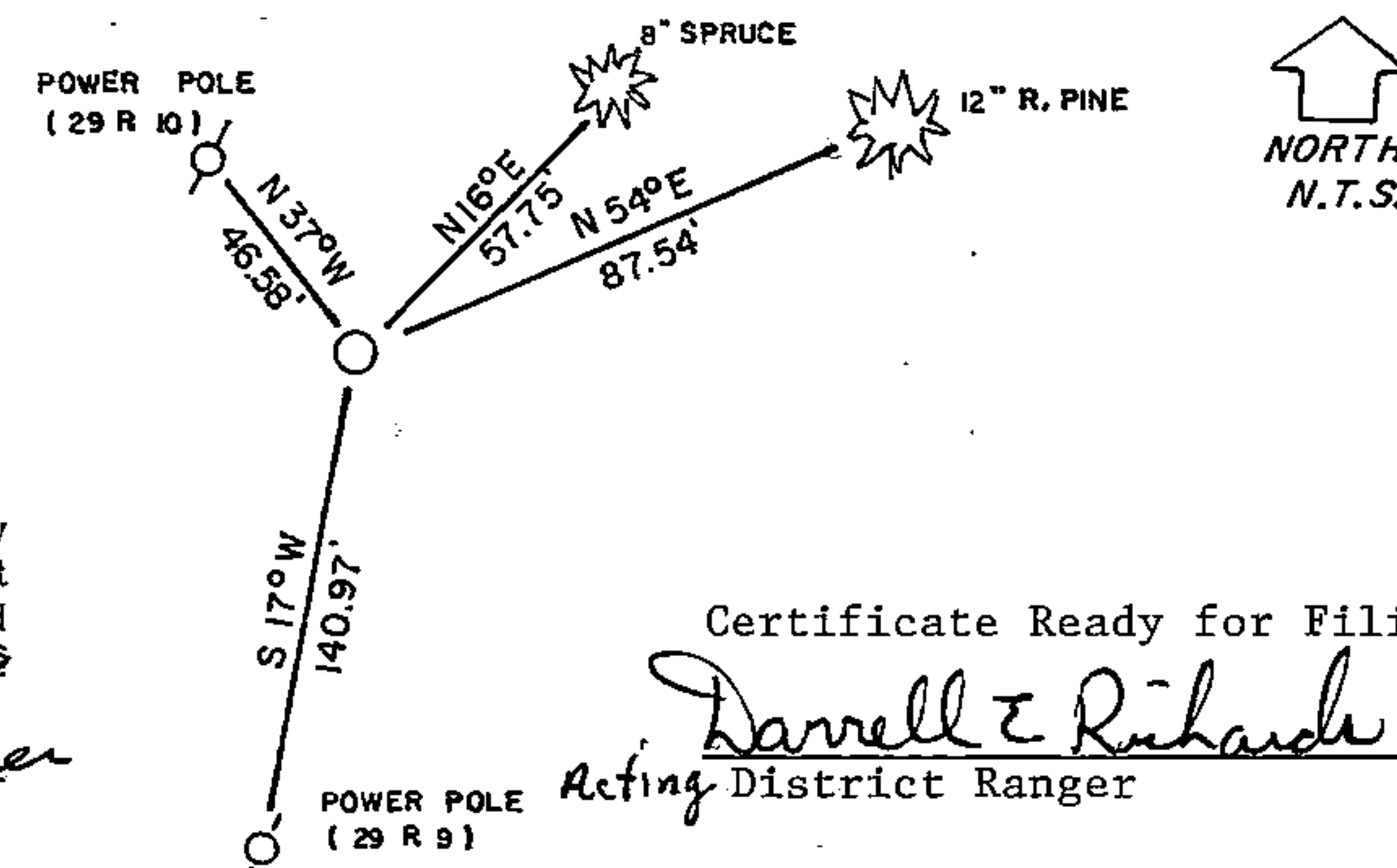
HEMLOCK 12", N 17E, 16 LINKS  
BIRCH 12", S 12W, 12 LINKS

SURVEYED IN 1908 BY NATHAN SMITH WHO SET TWO NEW HEMLOCK BTs

RESURVEYED IN 1983 BY MILO STEFAN, RLS WHO SET A 2" ALUMINUM MONUMENTS AT THE CORNER POSITION FROM OCCUPATION EVIDENCE FOUND.

RESURVEYED IN 1991 BY KIM PRITZLAFF WHO FOUND MILO STEFAN'S MONUMENT AND SET ONE ADDITIONAL TIE FOR STATUTORY FULFILLMENT.

In the plan view drawing below, provide reference ties to at least 4 witness monuments, or, if the location is within a municipality, to at least 2 witness monuments. (Witness monuments shall be made of concrete, natural stone, iron or other equally durable material, except wood other than bearing trees.) Also, show any material discrepancies between the corner restored or re-established and the location of any other previous corner location or occupation.



REGISTER'S OFFICE  
Forest County, Wis.

Received for record this 3rd day  
of JANUARY A.D. 19 92 at  
9:30 o'clock A.M. and recorded  
in Vol. CORNER RESTORATIONS  
page T-9

*Paul Aschenbrenner*  
Register of Deeds

Certificate Ready for Filing:

*Darrell E. Richards*  
Acting District Ranger

DOCUMENT NUMBER

143535

43515292000

# CERTIFIED LAND CORNER RESTORATION

State of Wisconsin

County of Forest

ss.

I Milo E. Stefan, do hereby certify that on the 26th day of April, 1983, I found evidence of the West Quarter corner of Section 28 Township 35 North, Range 15 East, Fourth Principal Meridian, as described hereon; and that from this evidence I established a new monument and accessories as described hereon to perpetuate the original location of this corner:

## Description of original monument and accessories and subsequent restorations:

Surveyed in 1859 by James McBride  
40.00 chains, set wood post  
Hemlock, 12", N17°E, 16 lks., 10.56 feet  
Birch, 12", S12°W, 12 lks., 7.92 feet

Surveyed in 1908 by Nathan Smith  
Smith found both original BTs and set two new BTs:  
Hemlock, 8", N25°50'W, 64½ lks., 42.57 feet  
Hemlock, 20", S85½W, 77 lks., 50.82 feet

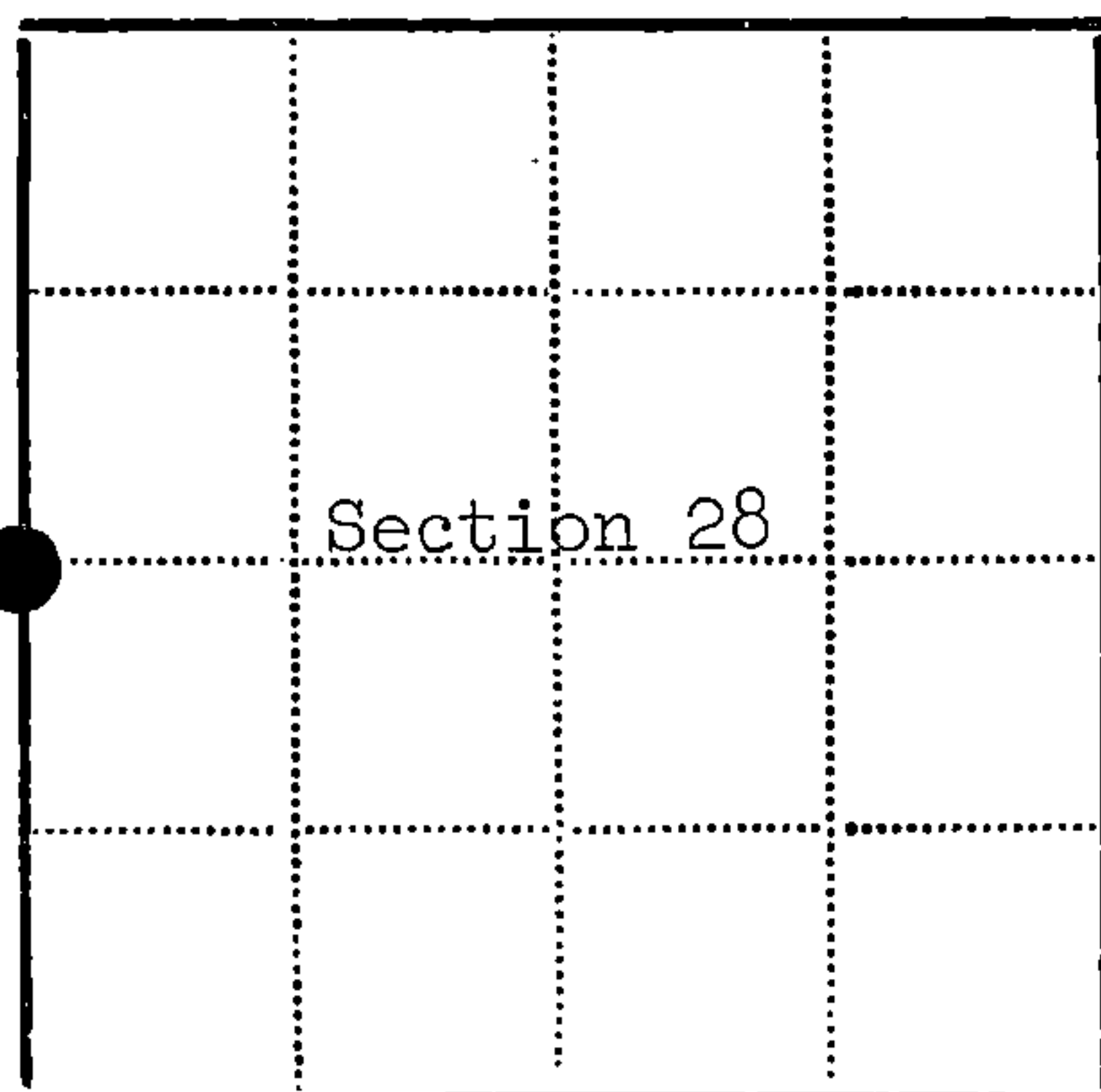
## Description of corner evidence found:

No original evidence found  
Local Evidence: Fence line north and west  
Centerline of County Trunk "H" east and south

## Description of monument and accessories I established to perpetuate the location of this corner:

Placed a 2" x 36" aluminum monument in mound of stone at intersection of road centerline and fence lines, with tablet stamped as follows:  
T35N, R15E, ¼, S29, S28, 1983, RLS-1558  
From which the following bear:  
Red Pine, 12", N54°E, 87.54 feet  
White Spruce, 8", N16°E, 57.75 feet  
Power Pole #3515-29E1, N41°W, 45.61 feet  
Steel Sign Post, SE, 1.60 feet

DOCUMENT NO.  
**124195**



● - Corner monument restored  
□ -

Resident witnesses

Dated at Rhinelander Wisconsin, this day of 1983.

Signature Milo E. Stefan Title Land Surveyor  
(County Surveyor, Registered Land Surveyor, or other duly authorized official)

Surveyors Registration No. RLS-1558

Office of Register of Deeds County of Forest

I hereby certify that the within instrument was filed in this office for record on the 13th day of September 1983, and was filed in Book No. Page No. of County Records.

Signature Eugene Statz Title Register of Deeds

Township 35 North, Range 15 East, Section 28, Index No. T-9, Page No. 48

43515292000