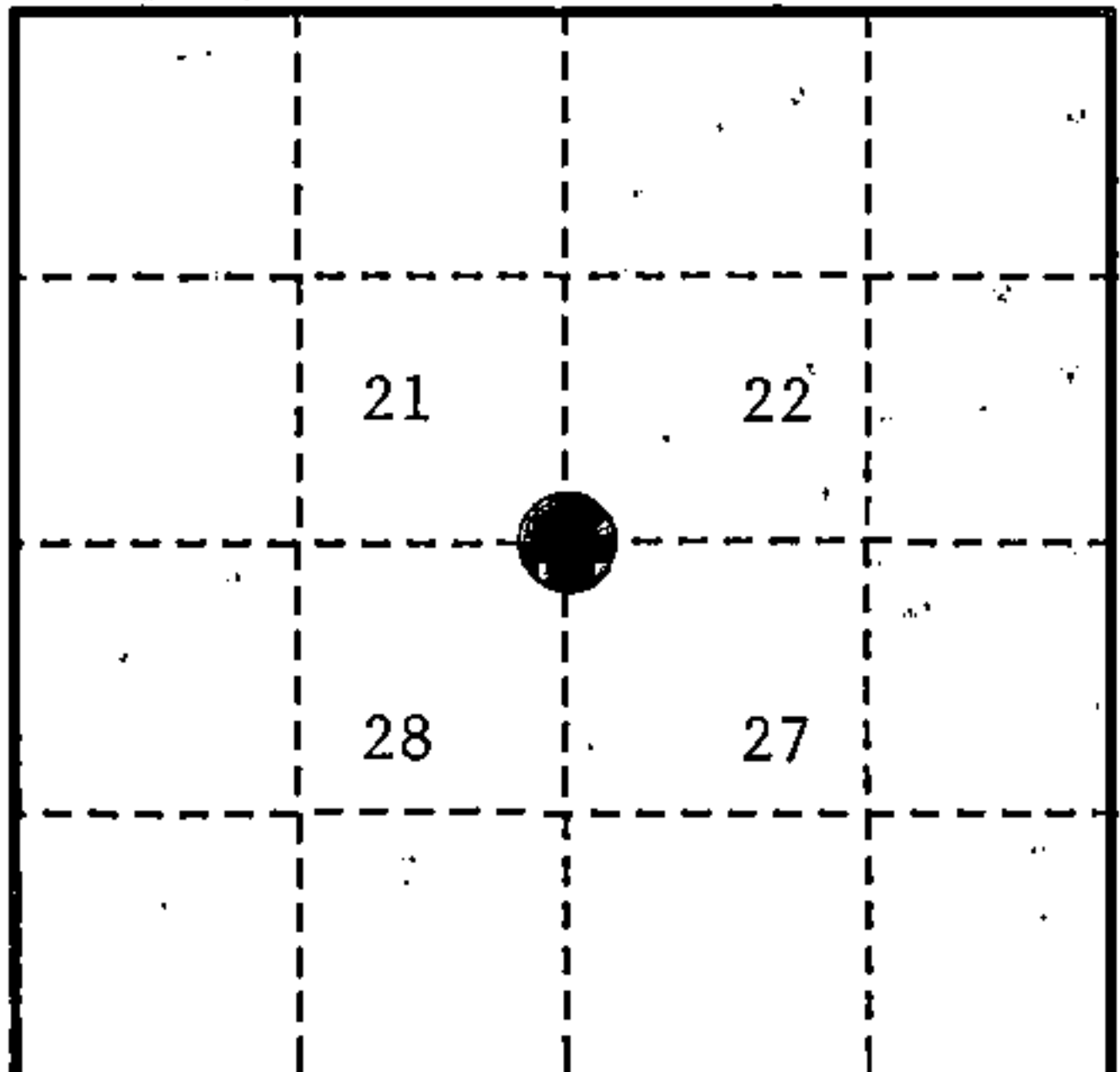


U. S. PUBLIC LAND SURVEY MONUMENT RECORD

INSTRUCTIONS: This record shall show the location of the corner and shall include all of the following nine elements (a through i).

- (a) Identify the corner by reference to the U.S. public land survey system.
- = Corner monument restored.



Section corner to Sections 21,22,27 and 28, T.35N., R.15E., Forest County, Wisconsin.

- (b) Describe any record evidence, monument evidence, occupational evidence, testimonial evidence or any other material evidence you considered, and whether the monument was found or placed.

In 1859, James McBride set a wood post with the following BTs: Hemlock, 16", N.12°W., 50 links; Sugar, 10", N.48°E., 25 links; Elm, 10", S.60°E., 38 links; Hemlock, 12", S.73°W., 54 links.

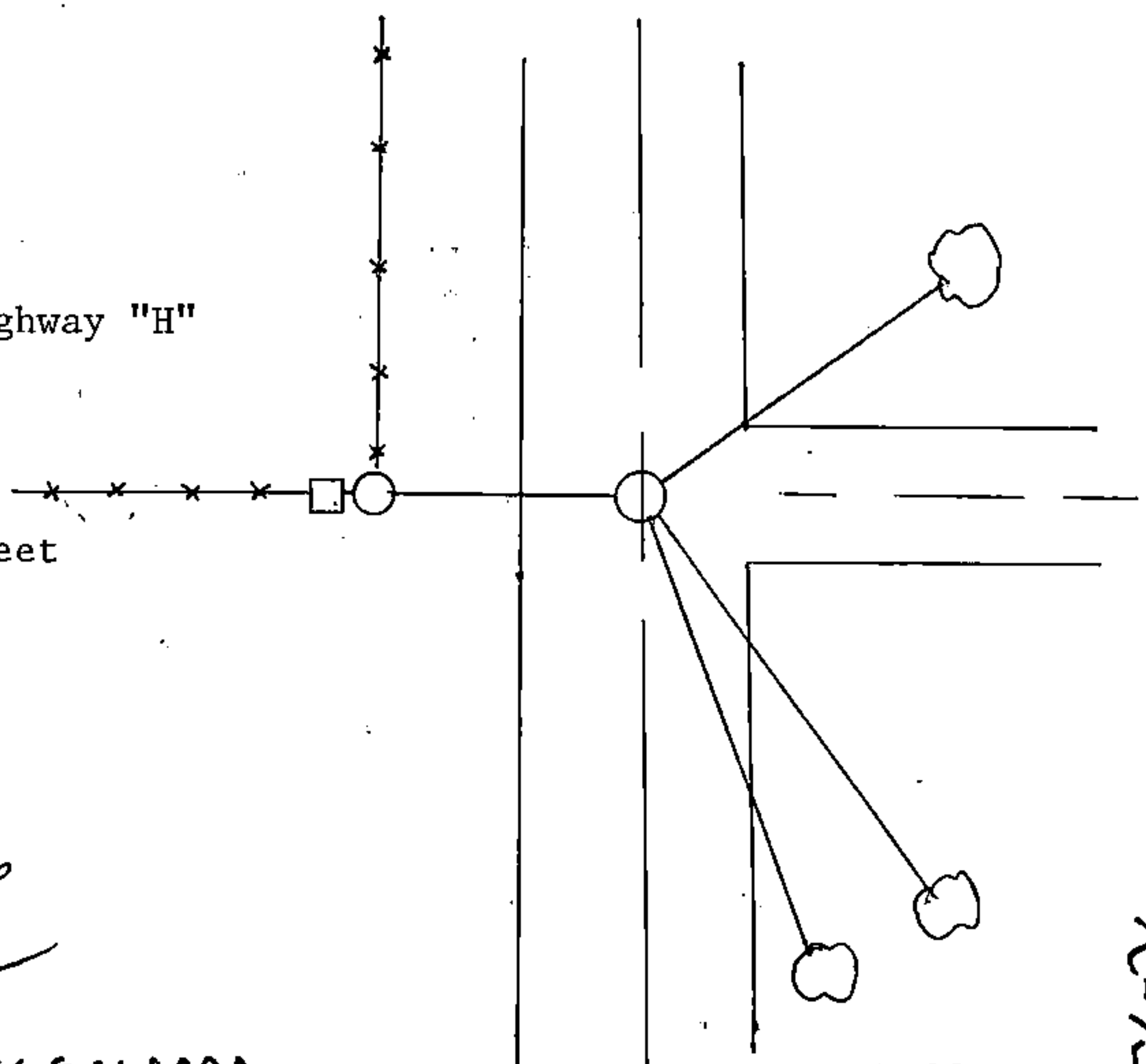
In 1915, N.H. Smith found corner and BTs OK, made a new BT: Birch, 12", N.62½E., 80½ links.

In 1991, Alan Harrison (RLS) found an old fence line going west from the intersection of county highway "H" and Kufner Road with no original or subsequent evidence. Set corner position at intersection of roads and fence line which fits well with N.H. Smith's survey of section 27 and is accepted as the corner position.

- (c) In the plan view drawing below, provide reference ties to at least 4 witness monuments, or, if the location is within a municipality, to at least 2 witness monuments. (witness monuments shall be made of concrete, natural stone, iron or other equally durable material.)

- (d) Show a plan view drawing depicting the relevant monuments and reference ties which is sufficient in detail to enable accurate relocation of the corner monument if the corner monument is disturbed. Indicate north.

1. Railroad spike in centerline county highway "H" marking the corner location.
2. Elm, 8", N.50°E., 61.81 feet
3. Sugar, 7", S.37°E., 77.00 feet
4. Yellow Birch, 6", S.27°E., 75.65 feet
5. Witness Corner 2½"x 36", West, 35.10 feet
6. Steel Sign Post, West, 35.63 feet.



REGISTER'S OFFICE }
 Forest County, Wis. }
 Received for record this 13th day
 of May A.D., 1992 at
11:30 o'clock A.M. and recorded
 in Vol. Local Patrols
 page R-13
Paul Hochstetler
 Register of Deeds

(e) Describe any material discrepancy between the location of the corner as restored or reestablished and the location of that corner as previously restored or reestablished by distance and direction. Show the discrepancy on the plan view drawing under (d), above. Show the distances between the corner as previously restored or reestablished and (1) the corner as restored or reestablished, and (2) to at least 2 of the witness monuments shown on the drawing in (d), above.

None

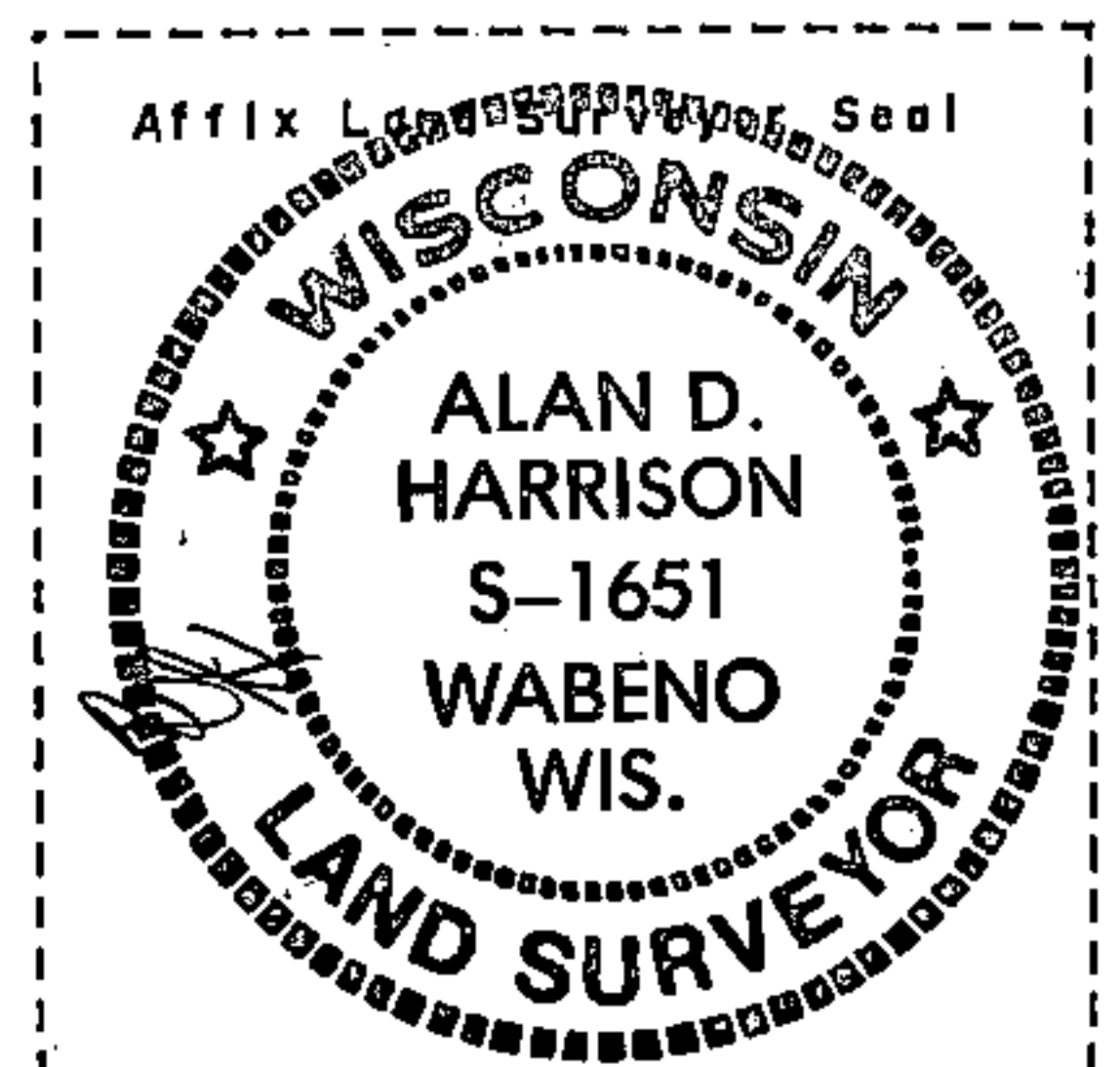
(f) Was the corner restored through acceptance of (1) an obliterated evidence location, or, (2) a found perpetuated location?

(1) an obliterated evidence location.

(g & h) Was the corner reestablished through lost corner proportionate methods? If so, show the method, including the directions and distances to other public land survey corners used as evidence or used for proportioning in determining the corner location?

No

(1) I, Alan D. Harrison
(type or print name) certify that the corner location shown on this record was determined by me or under my direction and control and that this U.S. Public Land Survey Monument Record is correct and complete to the best of my knowledge and belief.



Alan D. Harrison 4/9/92
Signature Date

CERTIFICATE READY FOR FILING:

Sue Vap
District Ranger

Document Number
191723

REGISTER'S OFFICE
Forest County, Wis.

Received for record this 3rd day
of AUGUST A.D., 2006 at
8:45 o'clock A.M. and recorded
in Vol. DRUG RESTORATIONS
page R-13.

Paul A. Heppner
Register of Deeds

U.S. PUBLIC LAND SURVEY MONUMENT RECORD

(AS REQUIRED BY S. A-E 5:02, WI ADM. CODE)

HISTORY OF ORIGINAL CORNER ESTABLISHMENT AND SUBSEQUENT RESTORATIONS AND DESCRIPTION OF ANY RECORD, MONUMENT, OCCUPATIONAL, TESTIMONIAL, OR OTHER EVIDENCE CONSIDERED:

1859 - JAMES McBRIDE, SURVEYOR, SET POST

SET THE FOLLOWING WITNESSES:
HEMLOCK 16" N12°W 50 LINKS
SUGAR MAPLE 10" N48°E 25 LINKS
ELM 10" S60°E 38 LINKS
HEMLOCK 12" S73°W 54 LINKS

1915 - N.H. SMITH FOUND CORNER AND BT'S OK, MADE A NEW BT: BIRCH 12" N62.5°E 80.5 LINKS.

1991 - SURVEY MONUMENT RECORD DOC #144427. ALAN HARRISON, SURVEYOR, S-1651, FOUND AN OLD FENCE LINE GOING WEST FROM THE INTERSECTION OF COUNTY HIGHWAY "H" AND KUFNER ROAD WITH NO ORIGINAL OR SUBSEQUENT EVIDENCE. SET RAILROAD SPIKE AT INTERSECTION OF ROADS AND FENCE LINE WHICH FITS WELL WITH N.H. SMITH'S SURVEY OF SECTION 27 AND IS ACCEPTED AS THE CORNER POSITION.

SET THE FOLLOWING WITNESSES:
ELM 8" N50°E 61.81 FEET
SUGAR MAPLE 7" S37°E 77.00 FEET
YELLOW BIRCH 6" S27°E 75.85 FEET
STEEL SIGN POST WEST 35.63 FEET
WITNESS CORNER, 2.5" x 36" WEST 35.10 FEET

2005 - WISDOT PLANS 9334-02-00 SHOWS FOUND RAILROAD SPIKE.

CORNER WAS: (CHECK ALL THAT APPLY)

- RESTORED THROUGH ACCEPTANCE OF AN OBLITERATED LOCATION
- RESTORED THROUGH ACCEPTANCE OF A FOUND PERPETUATED LOCATION
- CONSIDERED A LOST CORNER AND REESTABLISHED THROUGH LOST CORNER PROPORTIONATE METHODS (INCLUDING A PLAN VIEW DRAWING SHOWING DISTANCES AND DIRECTIONS TO OTHER PUBLIC LAND SURVEY CORNERS USED FOR PROPORTIONING AND DETERMINING THE CORNER LOCATION)
- RESTORED OR REESTABLISHED IN A LOCATION THAT DIFFERS FROM A PREVIOUS RESTORATION OF REESTABLISHMENT (INCLUDE A PLAN VIEW DRAWING AND INDICATE WHAT WAS SET AND/OR FOUND)

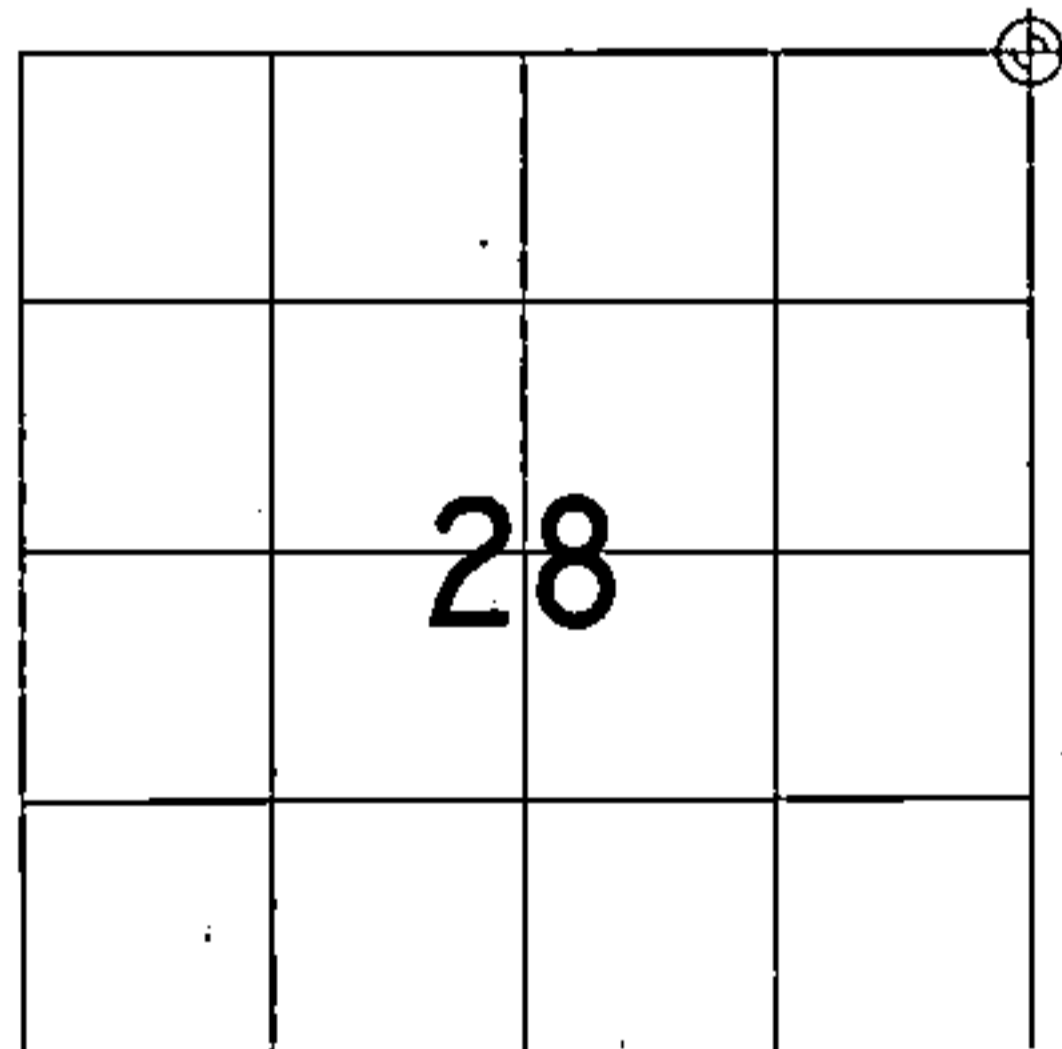
DESCRIBE THE MONUMENT AND ACCESSORIES USED TO PERPETUATE THE LOCATION OF THIS CORNER. (INCLUDE A PLAN VIEW DRAWING AND INDICATE WHAT WAS SET AND/OR FOUND)

2006 - ZACHARY J. STEVENS, SURVEYOR, S-2467-008, FOUND RAILROAD SPIKE IN CENTERLINE OF BIT.

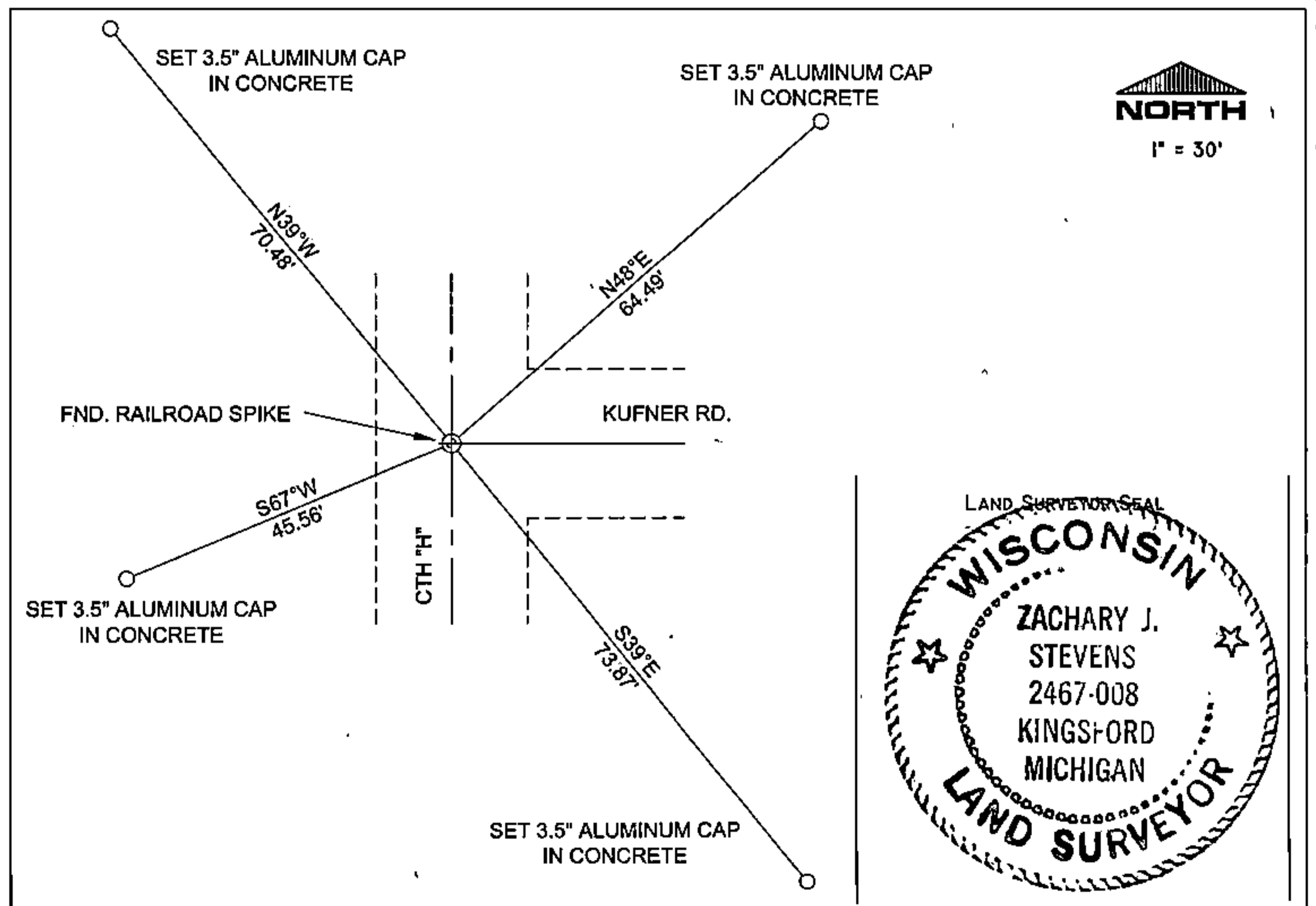
WISDOT SET THE FOLLOWING WITNESSES:
Z. STEVENS MEASURED THE FOLLOWING:

3.5" MONUMENT CAP IN CONCRETE N39°W 70.48 FEET
3.5" MONUMENT CAP IN CONCRETE N48°E 64.49 FEET
3.5" MONUMENT CAP IN CONCRETE S39°E 73.87 FEET
3.5" MONUMENT CAP IN CONCRETE S67°W 45.56 FEET

THE NORTHEAST
CORNER OF SECTION 28,
T. 35 N., R. 15 E.,
FOREST COUNTY, WISCONSIN



⊕ = LOCATION OF CORNER



I, ZACHARY J. STEVENS R.L.S. S-2467-008

(TYPE OR PRINT NAME) CERTIFY THAT THE CORNER LOCATION SHOWN ON THIS ABOVE RECORD WAS DETERMINED BY ME OR UNDER MY DIRECTION AND CONTROL AND THAT THIS U.S. PUBLIC LAND SURVEY MONUMENT RECORD IS CORRECT AND COMPLETE TO THE BEST OF MY KNOWLEDGE AND BELIEF.

INDEX No. R-13

Zachary J. Stevens 7/31/06
SIGNATURE DATE

43515210000

R-13