

U. S. PUBLIC LAND SURVEY MONUMENT RECORD

INSTRUCTIONS:

This record shall show the location of the corner and shall include all of the following nine elements (a through i).

(a) Identify the corner by reference to the U.S. public land survey system.

○ = Corner monument restored.

Quarter Corner to Sections 10 & 15,
T.35N., R.15E., Forest County, Wisconsin.

State Plane Coordinates

Wisconsin North Zone

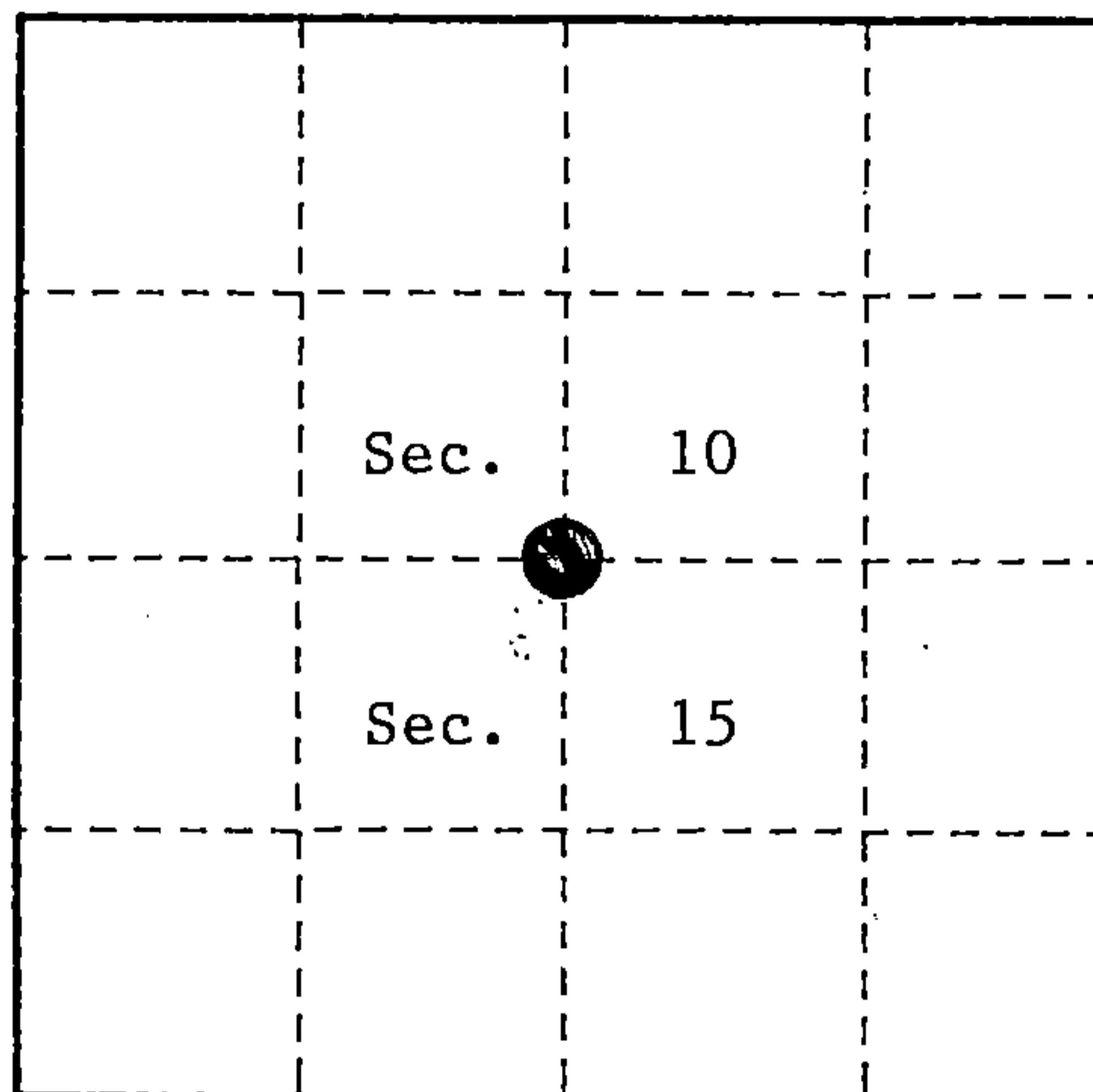
132591.92456-N

2326624.90784-E

Geographic Coordinates

45-31-17.93049-N

088-36-10.04301-W



(b) Describe any record evidence, monument evidence, occupational evidence, testimonial evidence or any other material evidence you considered, and whether the monument was found or placed.

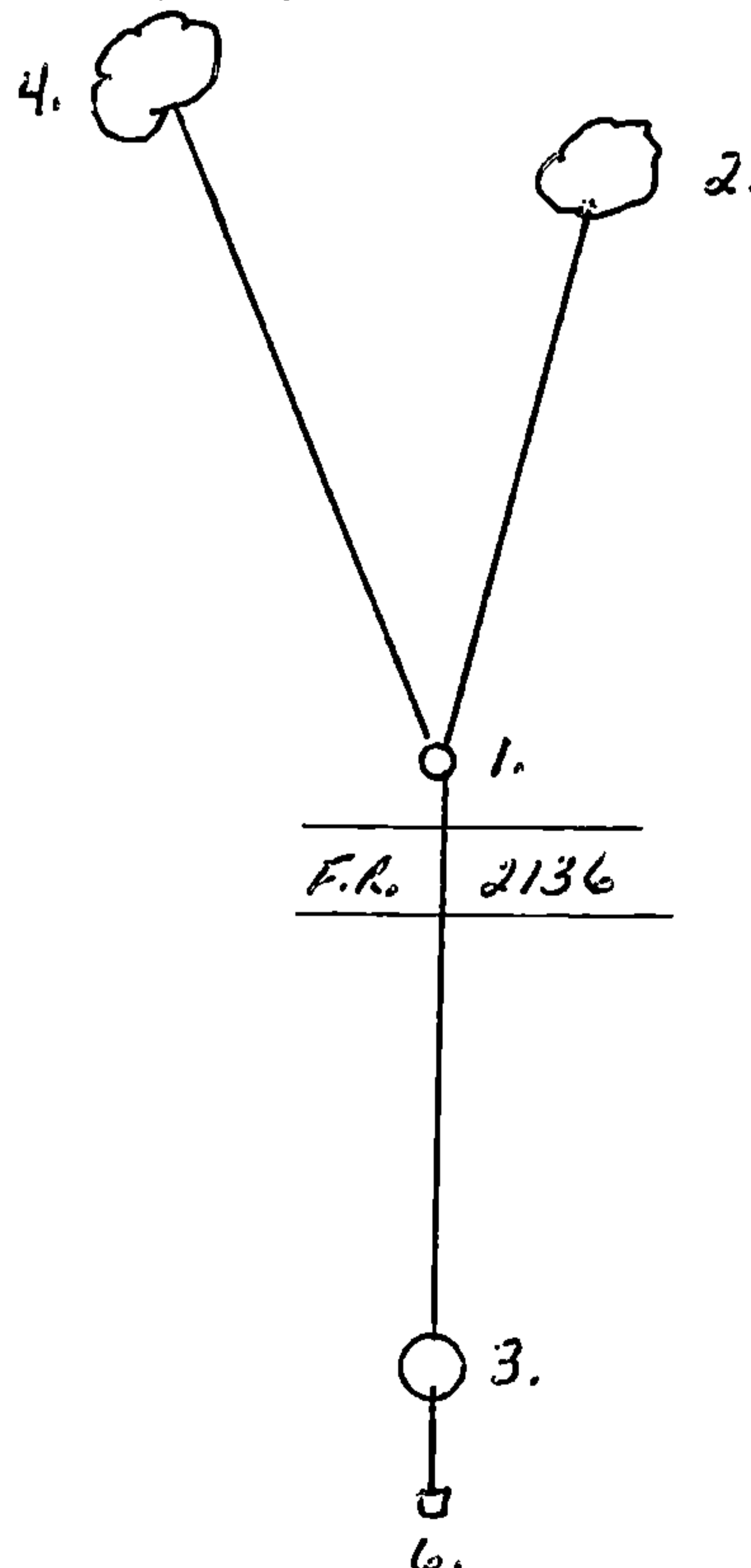
Original survey in 1859 by James McBride. Set wood post and the following bearing trees; Hemlock, 10", N.02°E., 37 links, Hemlock, 10", 5.78°W., 35 links.

On 6-27-94, Alan Harrison (RLS) found a 1" diameter iron pipe as noted on form #874 dated 6-25-36. The iron pipe was located 6" below the surface of the old blacktop, of Forest Road #2136, which was previously called Road 350 according to form #874. Set a railroad spike flush with the surface of the new blacktop from which the following new corner references bear; Sugar, 7", N.17°E., 33.04 feet, 2½" x 36" Reference Monument, South, 37.00 feet, Sugar, 12", N.26°W., 41.19 feet, center-line of F.R. #2136, South, 2.80 feet, Steel Sign Post, 0.70 feet South of Reference Monument.

(c) In the plan view drawing below, provide reference ties to at least 4 witness monuments, or, if the location is within a municipality, to at least 2 witness monuments. (witness monuments shall be made of concrete, natural stone, iron or other equally durable material.)

(d) Show a plan view drawing depicting the relevant monuments and reference ties which is sufficient in detail to enable accurate relocation of the corner monument if the corner monument is disturbed. Indicate north.

1. Railroad spike flush with blacktop.
2. Sugar, 7", N.17°E., 33.04 feet.
3. 2½" x 36" Aluminum Reference Monument with tablet stamped to identify corner, South, 37.00 feet.
4. Sugar, 12", N.26°W., 41.19 feet.
5. Center-line F.R. #2136, South, 2.80 feet.
6. Steel Sign Post, 0.70 feet South of Reference Monument.



(e) Describe any material discrepancy between the location of the corner as restored or reestablished and the location of that corner as previously restored or reestablished by distance and direction. Show the discrepancy on the plan view drawing under (d), above. Show the distances between the corner as previously restored or reestablished and (1) the corner as restored or reestablished, and (2) to at least 2 of the witness monuments shown on the drawing in (d), above.

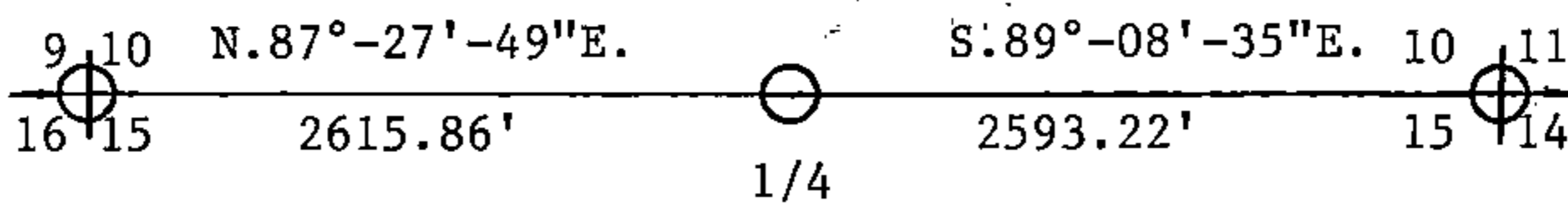
None.

(f) Was the corner restored through acceptance of (1) an obliterated evidence location, or, (2) a found perpetuated location?

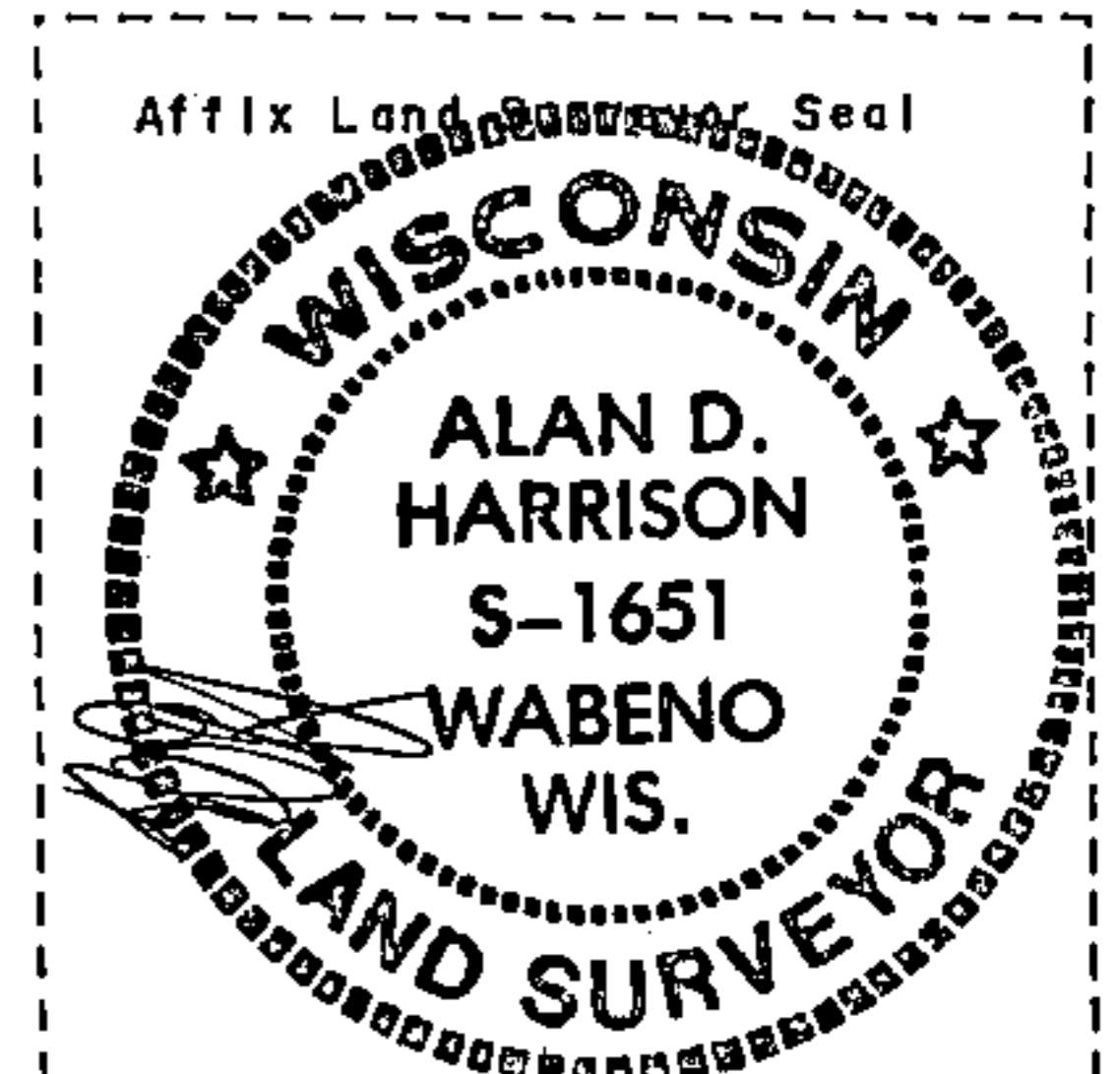
(2)

(g & h) Was the corner reestablished through lost corner proportionate methods? If so, show the method, including the directions and distances to other public land survey corners used as evidence or used for proportioning in determining the corner location?

No.



REGISTER'S OFFICE
 Forest County, Wis.
 Received for record this 23rd day
 of November A.D., 19 94 at
9:00 o'clock A.M. and recorded
 in Vol. Case Restorations
 page 35-15; 15
Sue Vap
 Register of Deeds



(1) I, Alan D. Harrison

(type or print name) certify that the corner location shown on this record was determined by me or under my direction and control and that this U.S. Public Land Survey Monument Record is correct and complete to the best of my knowledge and belief.

Alan D. Harrison 10/26/94
 Signature Date

CERTIFICATE READY FOR FILING:

Sue Vap
 District Ranger

U.S. PUBLIC LAND SURVEY MONUMENT RECORD

(AS REQUIRED BY s. A-E 7.08, WI ADM. CODE)

HISTORY OF ORIGINAL CORNER ESTABLISHMENT AND SUBSEQUENT RESTORATIONS AND DESCRIPTION OF ANY RECORD, MONUMENT, OCCUPATIONAL, TESTIMONIAL, OR OTHER EVIDENCE CONSIDERED:

1859 - James McBride set the corner with the following witnesses:

Hemlock 10" N02°E 37 Links Hemlock 10" S78°W 35 Links

1994 - Alan Harrison found a 1" diameter iron pipe as noted on form #874 dated 6-25-36. The iron pipe was located 6" below the surface of the old blacktop, of Forest Road #2136, which was previously called Road 350 according to form #874. Set a railroad spike flush with the surface of the new blacktop. Set the following witnesses.

Sugar 7" N17°E 33.04' 2 1/2" x 36" Reference Monument South 37.00' with steel sign post 0.7' South of monument
Sugar 12" N26°W 41.19' Centerline of road 2.8' South

1995 - John Garske, RLS 1685 found R.R. Spike. Plat of Survey for USFS. Refers to Alan Harrison witnesses:

REGISTER'S OFFICE
Forest County, Wis.

Received for record this 30th day of August A.D., 2012 at 8:55 o'clock A.M. and recorded in Vol. CORNER RESTORATION page J-15

Cheryl Resutec Deputy Register of Deeds

CORNER WAS: (CHECK ALL THAT APPLY)

- RESTORED THROUGH ACCEPTANCE OF AN OBLITERATED LOCATION
RESTORED THROUGH ACCEPTANCE OF A FOUND PERPETUATED LOCATION
CONSIDERED A LOST CORNER AND REESTABLISHED THROUGH LOST CORNER PROPORTIONATE METHODS (INCLUDING A PLAN VIEW DRAWING SHOWING DISTANCES AND DIRECTIONS TO OTHER PUBLIC LAND SURVEY CORNERS USED FOR PROPORTIONING AND DETERMINING THE CORNER LOCATION)
RESTORED OR REESTABLISHED IN A LOCATION THAT DIFFERS FROM A PREVIOUS RESTORATION OF REESTABLISHMENT (INCLUDE A PLAN VIEW DRAWING AND INDICATE WHAT WAS SET AND/OR FOUND)

DESCRIBE THE MONUMENT AND ACCESSORIES USED TO PERPETUATE THE LOCATION OF THIS CORNER. (INCLUDE A PLAN VIEW DRAWING AND INDICATE WHAT WAS SET AND/OR FOUND)

2012 - Zachary J. Stevens, RLS 2467-008, Found the remains of a PK/MAG nail with no head. Set new MAG nail in same position.

Found the following witnesses:

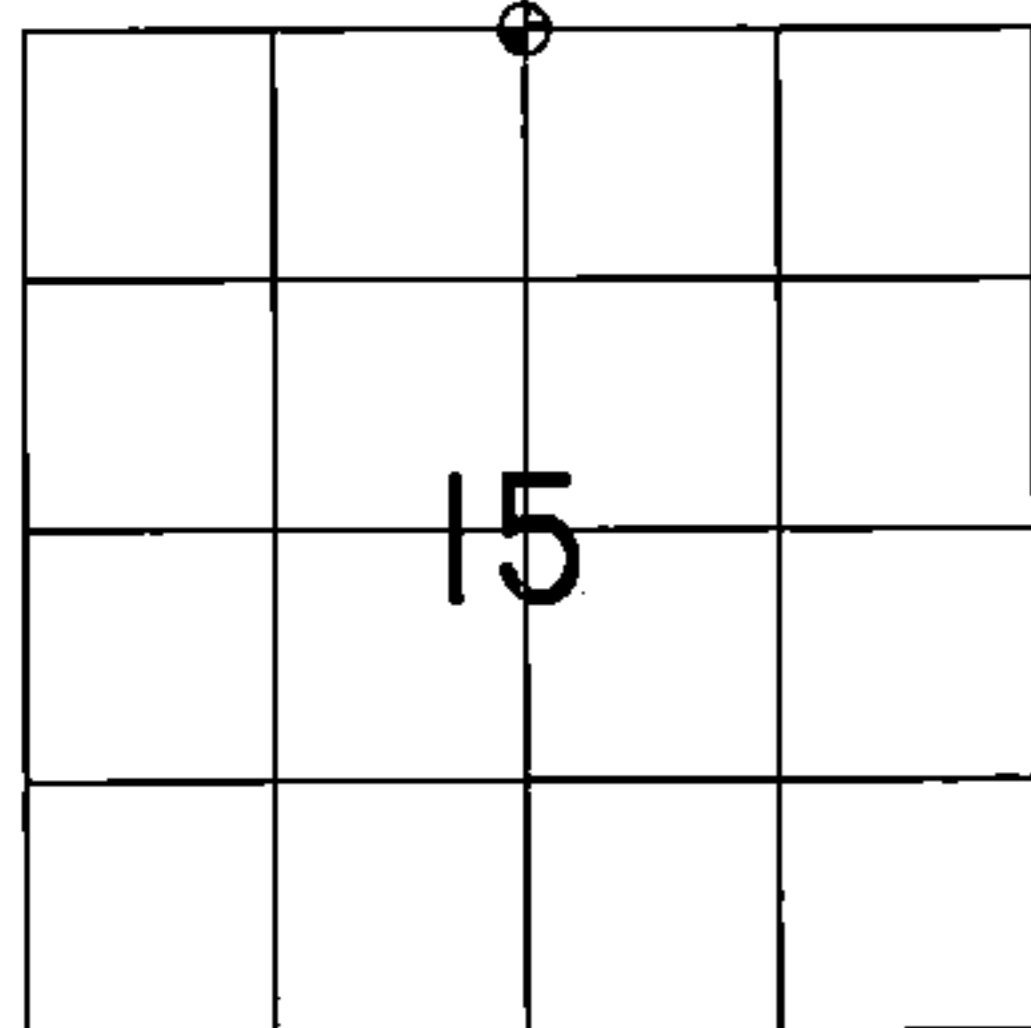
Reference Monument South 37.06' Sign still in place South of Reference Monument
Sugar 7" now 10" N17°E Nail not visible. Tree has witness tag and overgrown Blazes.
Sugar 12" now 14" N26°W Nail not visible. Tree has witness tag and overgrown Blazes.

Set the following witnesses:

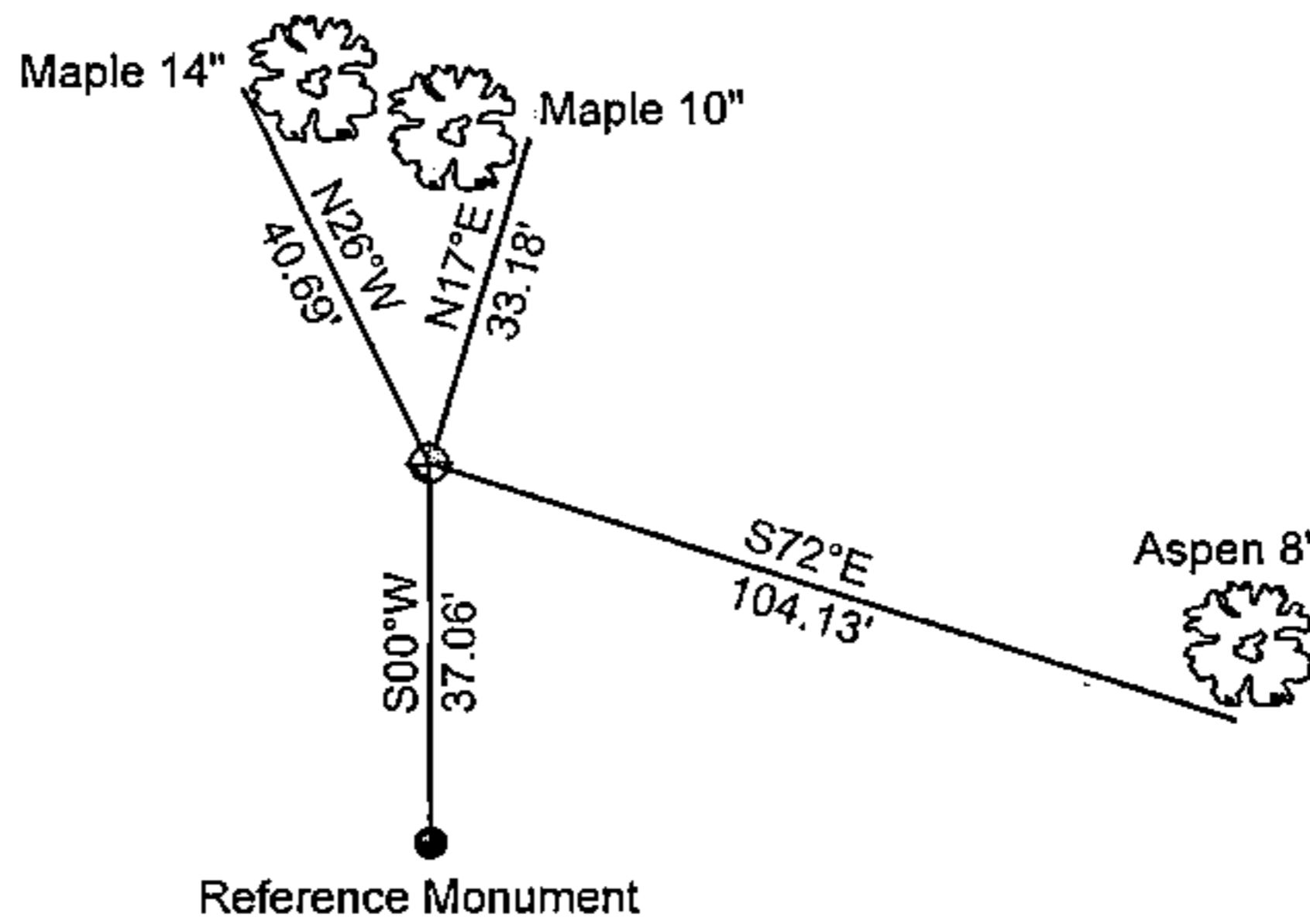
Maple 10" N17°E 33.18' Set DH nail in old nail scar
Maple 14" N26°W 40.69' Set DH nail in old nail scar
Aspen 8" S72°E 104.13' Set DH nail. Aspen has new chest, stump and nail blazes

Corner falls 3' North of E/W center line of Goodman Park Road

The North 1/4 corner corner of Section 15 T. 35N, R15E Forest County, Wisconsin



= LOCATION OF CORNER



1" = 40'



I, ZACHARY J. STEVENS R.L.S. S 2467-008

(TYPE OR PRINT NAME) CERTIFY THAT THE CORNER LOCATION SHOWN ON THIS ABOVE RECORD WAS DETERMINED BY ME OR UNDER MY DIRECTION AND CONTROL AND THAT THIS U.S. PUBLIC LAND SURVEY MONUMENT RECORD IS CORRECT AND COMPLETE TO THE BEST OF MY KNOWLEDGE AND BELIEF.

Signature of Zachary J. Stevens

8/30/12 DATE

INDEX No.

J-15

43515 100020