

CERTIFIED LAND CORNER RESTORATION

State of Wisconsin }
County of Forest } ss.

I Jean F. Resvick, do hereby certify that on the 30th day of June, 1969, I found evidence of the Northeast Section corner of Section 15 Township 35 North, Range 15 East, Fourth Principal Meridian, as described hereon; and that from this evidence I established a new monument and accessories as described hereon to perpetuate the original location of this corner:

Description of original monument and accessories and subsequent restorations:

Surveyed in 1859 by James McBride
80.00 chains north between sections 14 and 15, set post
Hemlock 30, N40W, 52 lks.
Hemlock 24, N25E, 15 lks.
Sugar 12, S36E, 57 lks.
Birch 16, S45W, 19 lks.
John Hammes records show that on May 5, 1936 a iron pipe was found 10" below surface and bearing trees were found at N40W, S36E and S45W.

Description of corner evidence found:

Found 1 1/4 inch diameter iron rod on south edge of road. Area has been clear of stumps for road improvements and plantation. Large stump holes check where Hemlocks and Birch would of been.

Description of monument and accessories I established to perpetuate the original location of this corner:

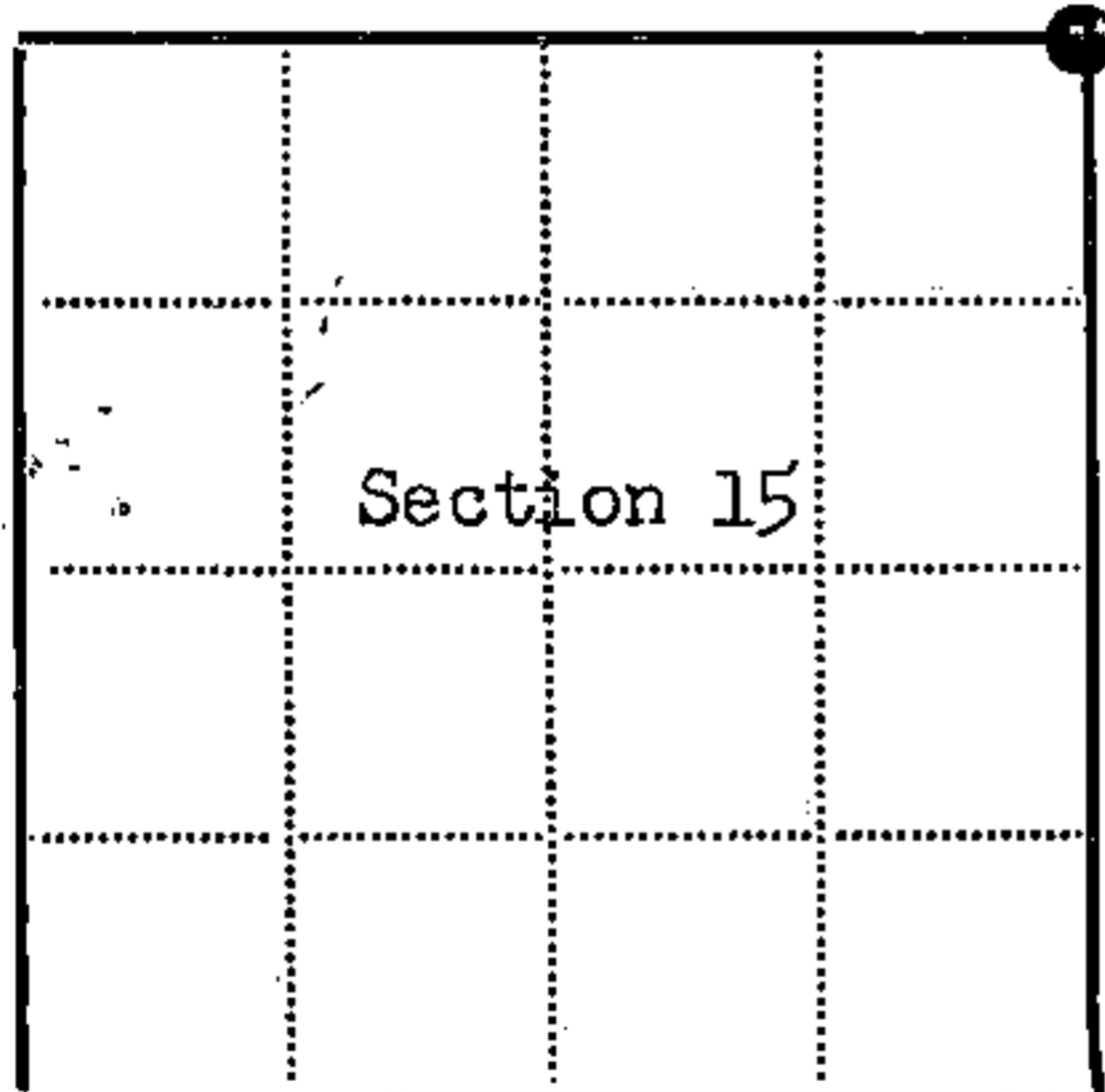
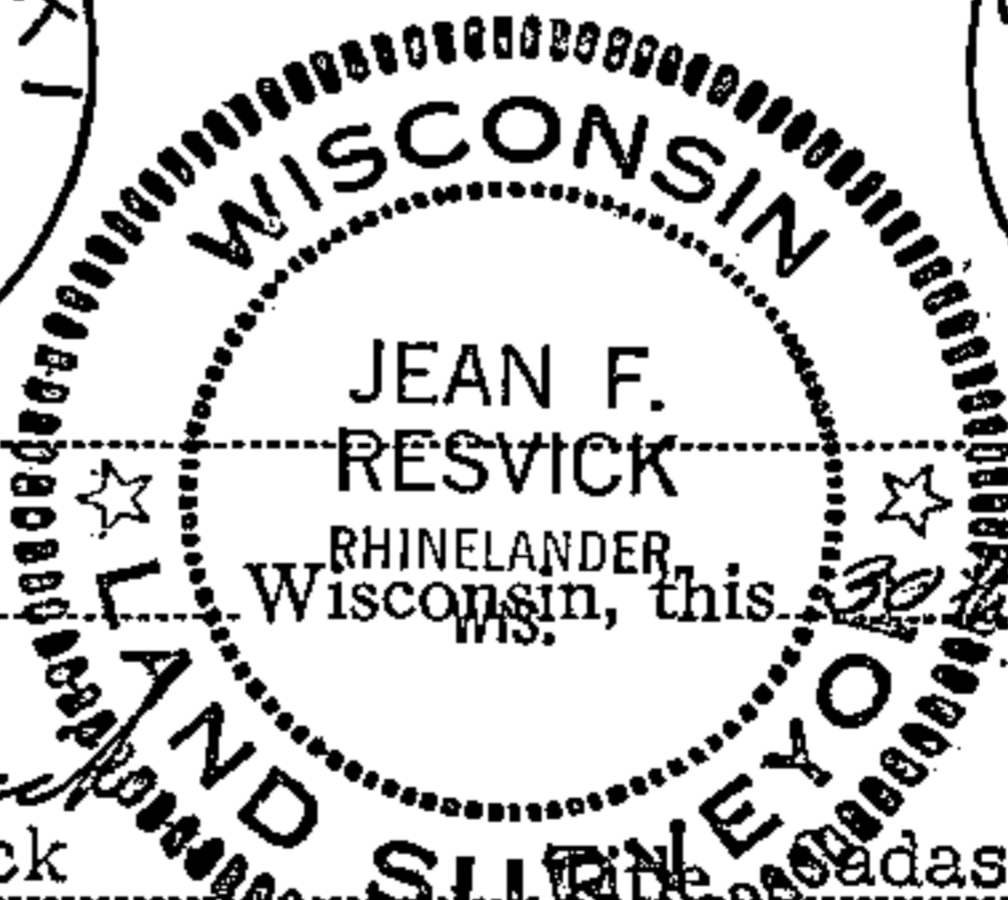
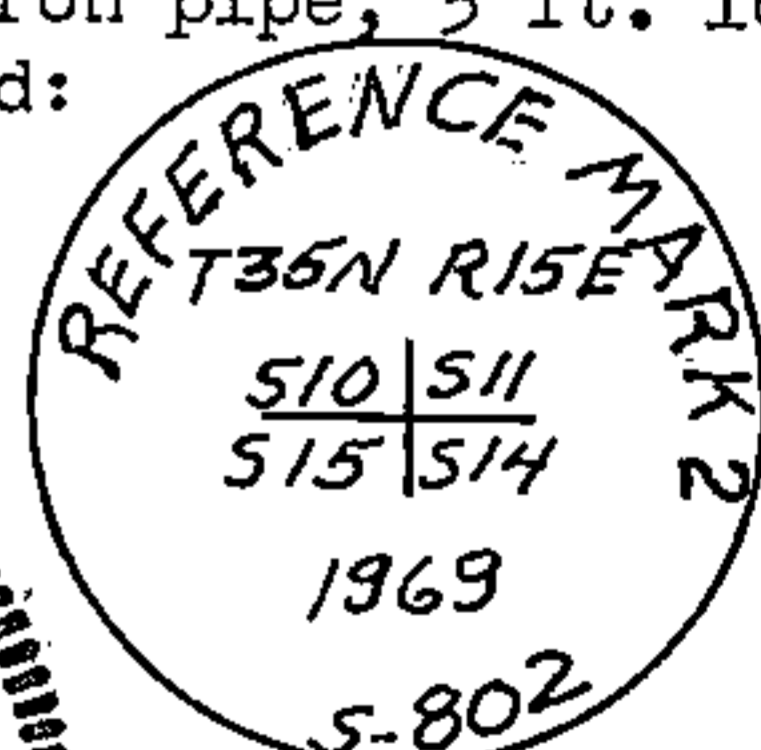
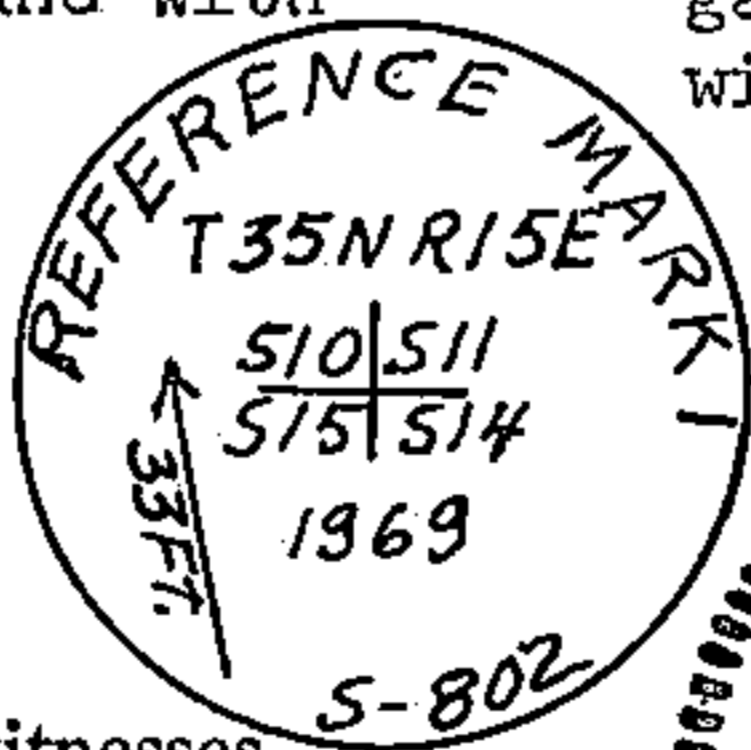
1 1/4 inch diameter iron rod left in place to mark corner. Blazed and scribed the following new bearing trees. Spruce 10, bears S57E, 26.18 ft., Spruce 8, bears S5E, 20.34 ft., Spruce 5, bears N13W, 44.80 ft. Set 4 x 4 cedar post south 15 ft.

Reference Mark Number 1

At S14E, 33 ft. set 6 inch diameter concrete monument, 4 ft. long 6 in. above ground with brass cap marked:

Reference Mark Number 2

At N2E, 40 ft. set 2 in. inside diameter galvanized wrought iron pipe, 5 ft. long, with brass cap marked:



Legend: Circle with dot = Corner monument restored; Square =

Resident witnesses
Dated at Rhinelander, Wisconsin, this 30th day of Jan. 1970.
Signature: Jean F. Resvick, Land Surveyor
(County Surveyor, Registered Land Surveyor or other duly authorized official)

Surveyors Registration No. S-802 DOCUMENT NUMBER 98041

Office of Register of Deeds County of Forest
I hereby certify that the within instrument was filed in this office for record on the 22nd day of May 1970, and was filed in Book No. Page No. J-17 of County Records.

Signature: Eugene Stutzman, Title Register of Deeds

Township 35 North, Range 15 East, Section 15, Index No. J-17, Page No.

U.S. PUBLIC LAND SURVEY MONUMENT RECORD

(AS REQUIRED BY S. A-E 7.08, WI. ADM. CODE)

HISTORY OF ORIGINAL CORNER ESTABLISHMENT AND SUBSEQUENT RESTORATIONS AND DESCRIPTION OF ANY RECORD, MONUMENT, OCCUPATIONAL, TESTIMONIAL, OR OTHER EVIDENCE CONSIDERED:

1859 - James McBride set the corner with the following witnesses:

Hemlock 30" N40°W 52 Links Hemlock 24" N25°E 15 Links
Sugar 12" S36°E 57 Links Birch 16" S45°W 19 Links

1936 - John Hammes records show that on May 5, 1936 a iron pipe was found 10" below surface and bearing trees were found at N40W, S36E and S45W

1970 - Jean Resvick found 1 1/4" iron rod on South edge of road. Area has been clear of stumps for road improvements and plantation. Large stump holes check where hemlocks and Birch would have been. Set the following witnesses:

Spruce 10" S57°E 26.18' Reference Monument #1 S14°E 33.00' 6" dia concrete monument with brass cap
Spruce 8" S05°E 20.34' Reference Monument #2 N02°E 40.00' 2" galvanized iron pipe with brass cap
Spruce 5" N13°W 44.80' 4" x 4" cedar post South 15'

1987 - Alan Harrison recovered corner position by pulling distances from the corner references as set by J. Resvick. Plat of Survey shows a Brass capped monument found in place. Listed the following witnesses.

R. Pine 12" N19°E 84.77' Reference Monument #1 S14°E 33.00' 6" dia concrete monument with brass cap
W. Spruce 10" S23°E 36.52' Reference Monument #2 N02°E 40.00' 2" galvanized iron pipe with brass cap
W. Spruce 8" N33°W 56.01'

CORNER WAS: (CHECK ALL THAT APPLY)

- RESTORED THROUGH ACCEPTANCE OF AN OBLITERATED LOCATION
RESTORED THROUGH ACCEPTANCE OF A FOUND PERPETUATED LOCATION
CONSIDERED A LOST CORNER AND REESTABLISHED THROUGH LOST CORNER PROPORTIONATE METHODS
RESTORED OR REESTABLISHED IN A LOCATION THAT DIFFERS FROM A PREVIOUS RESTORATION

DESCRIBE THE MONUMENT AND ACCESSORIES USED TO PERPETUATE THE LOCATION OF THIS CORNER: (INCLUDE A PLAN VIEW DRAWING AND INDICATE WHAT WAS SET AND/OR FOUND)

2012 - Zachary J. Stevens, RLS 2467-008, Found the remains of a PK/MAG nail with no head. Set new MAG nail in same position.

Found the following witnesses:

R. Pine 12" now 18" N19°E 85.18' found nail and washer just visible. Tree has witness tag and overgrown Blazes.
W. Spruce 10" now 14" S23°E Nail not visible. Tree has witness tag and overgrown Blazes.
W. Spruce 8" now 12" N33°W Nail not visible. Tree has witness tag and overgrown Blazes.
Reference Monument #1 S14°E 33.04' 6" dia concrete monument with brass cap
Reference Monument #2 N02°E 40.11' 2" galvanized iron pipe with brass cap

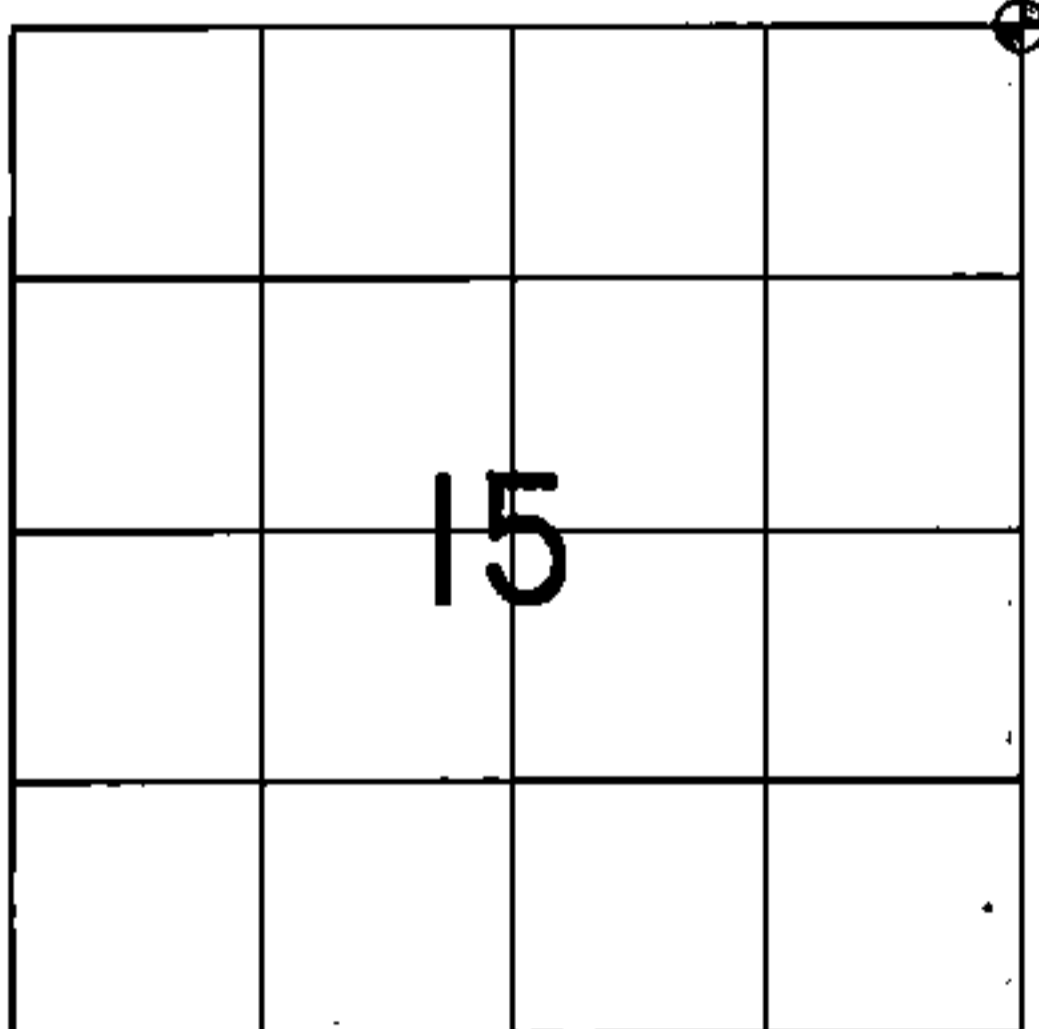
Set the following witnesses:

W. Spruce 14" S23°E 36.93' Set DH nail. Tree has witness tag and overgrown Blazes.
W. Spruce 12" N33°W 55.68' Set DH nail. Tree has witness tag and overgrown Blazes.

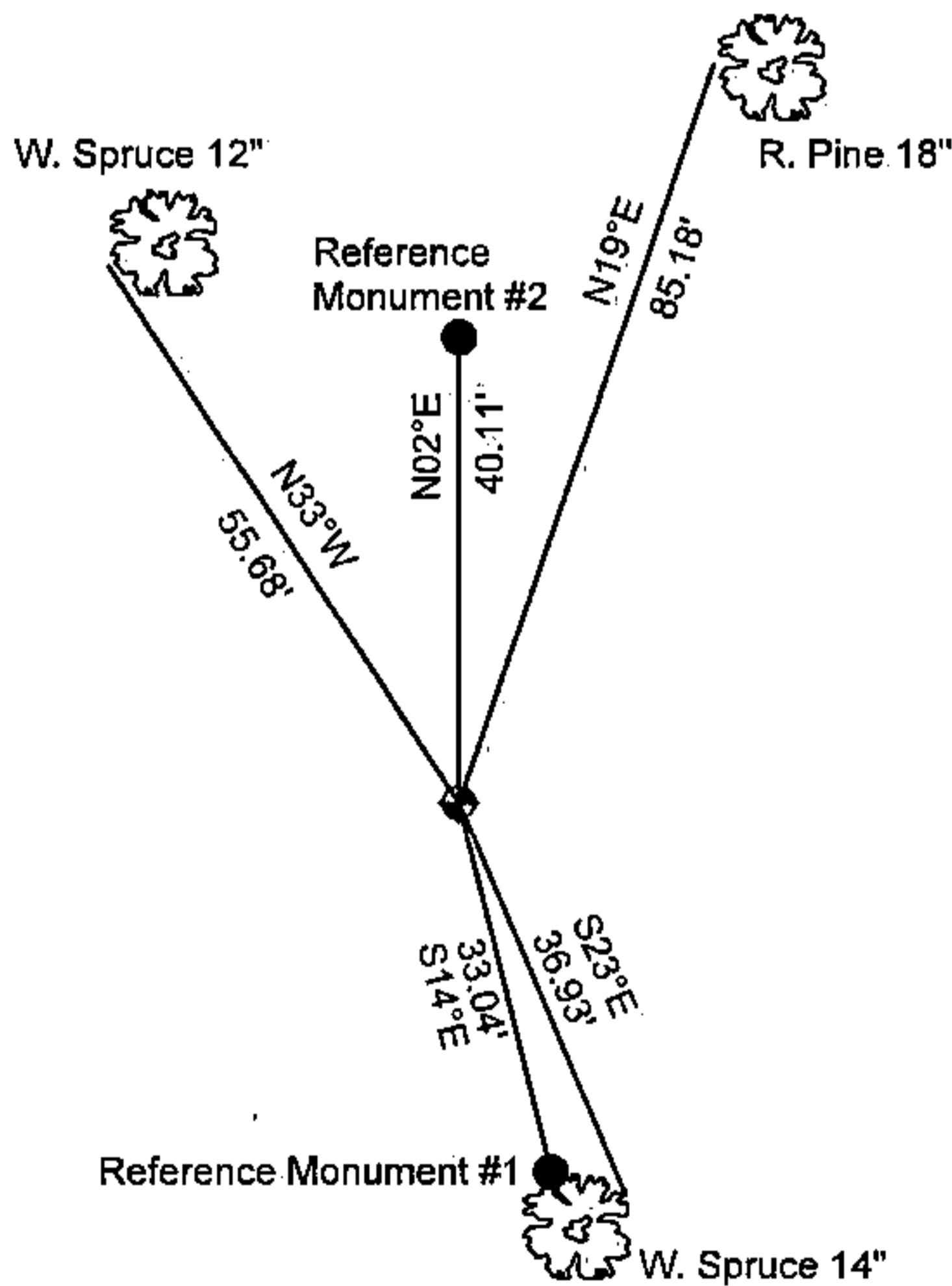
Corner falls 0.1' North of the South edge of pavement of Goodman Park Road

REGISTER'S OFFICE
Forest County, Wis.
Received for record this 30th day of August A.D., 2012 at 8:55 o'clock A.M. and recorded in Vol. CORNER RESTORATIONS page J-17

The Northeast corner corner of Section 15 T. 35N, R15E Forest County, Wisconsin



= LOCATION OF CORNER



LAND SURVEYOR SEAL



I, ZACHARY J. STEVENS R.L.S. S 2467-008

(TYPE OR PRINT NAME) CERTIFY THAT THE CORNER LOCATION SHOWN ON THIS ABOVE RECORD WAS DETERMINED BY ME OR UNDER MY DIRECTION AND CONTROL AND THAT THIS U.S. PUBLIC LAND SURVEY MONUMENT RECORD IS CORRECT AND COMPLETE TO THE BEST OF MY KNOWLEDGE AND BELIEF.

Signature: Zachary J. Stevens DATE: 8/30/12

INDEX No. J-17

4351510.0000