

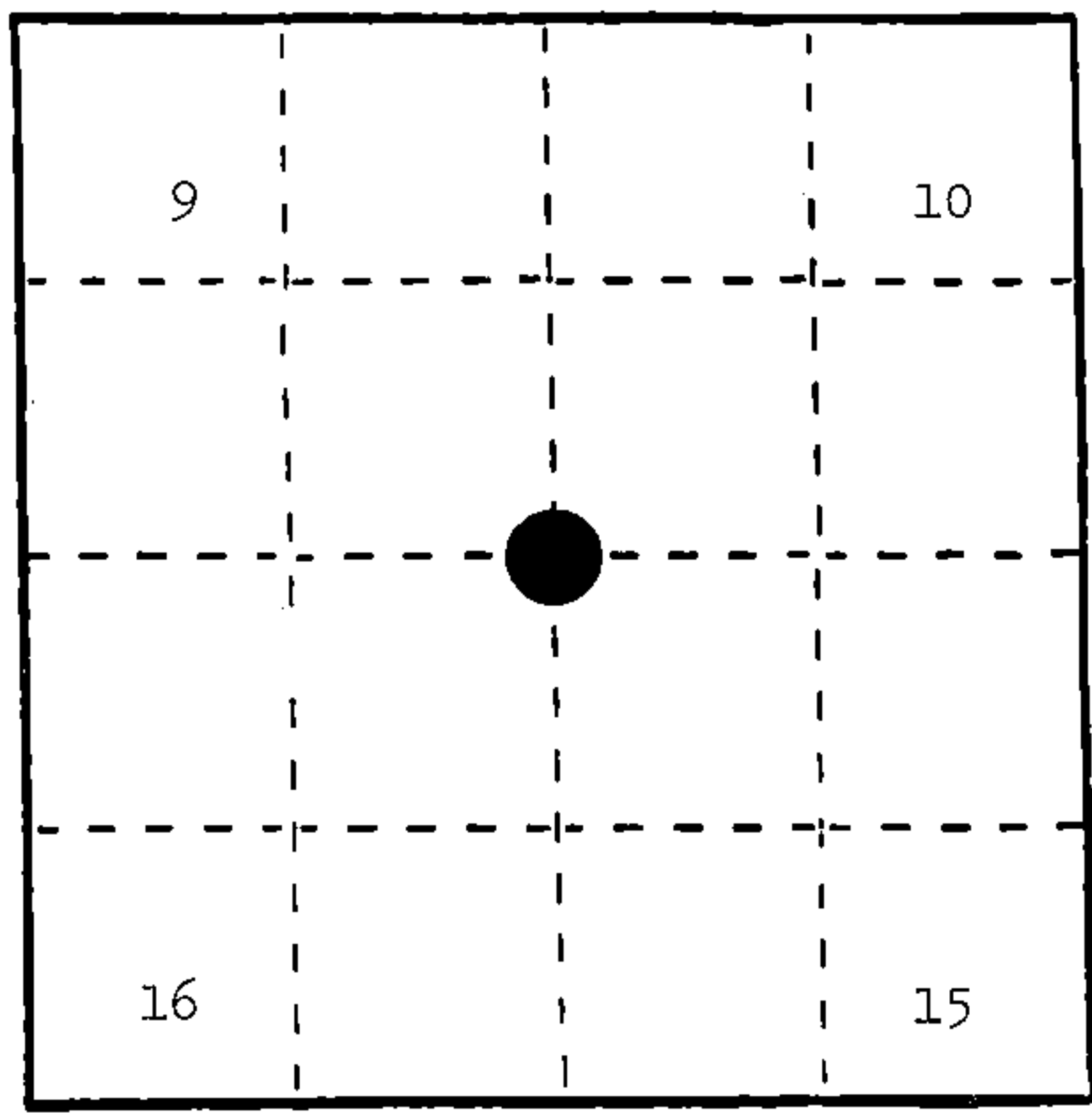
U. S. PUBLIC LAND SURVEY MONUMENT RECORD

INSTRUCTIONS: This record shall show the location of the corner and shall include all of the following nine elements (a through i).

(a) Identify the corner by reference to the U.S. public land survey system.

○ = Corner monument restored.

Section corner to Sections 9, 10, 15, and 16, T.35N., R.15E.



REGISTER'S OFFICE }
 Forest County, Wis. }
 Received for record this 8th day
 of October A.D., 1986 at
1:25 o'clock P.M. and recorded
 in Vol. CORNER RESTORATIONS
 page J-13
Paul Aschambrenner
 Register of Deeds

(b) Describe any record evidence, monument evidence, occupational evidence, testimonial evidence or any other material evidence you considered, and whether the monument was found or placed.

In 1859, James McBride set corner with the following BTs: Ironwood, 12", N.78°W., 40 links; Sugar, 8", N.10°E., 42 links; Sugar, 12", S.33°E., 38 links; Sugar, 24", S.55°W., 45 links.

In 1904, N. Smith called original BTs okay and distance south to quarter corner 2560.47'. Made a new Sugar BT, 8", S.71°E., 25.08'.

In 1918, J. Melindy found old post and set 2" gas pipe in pit of stones, fence post at fence corner, S.43°50'E., 34.90'. Distance south to quarter corner is 2555'.

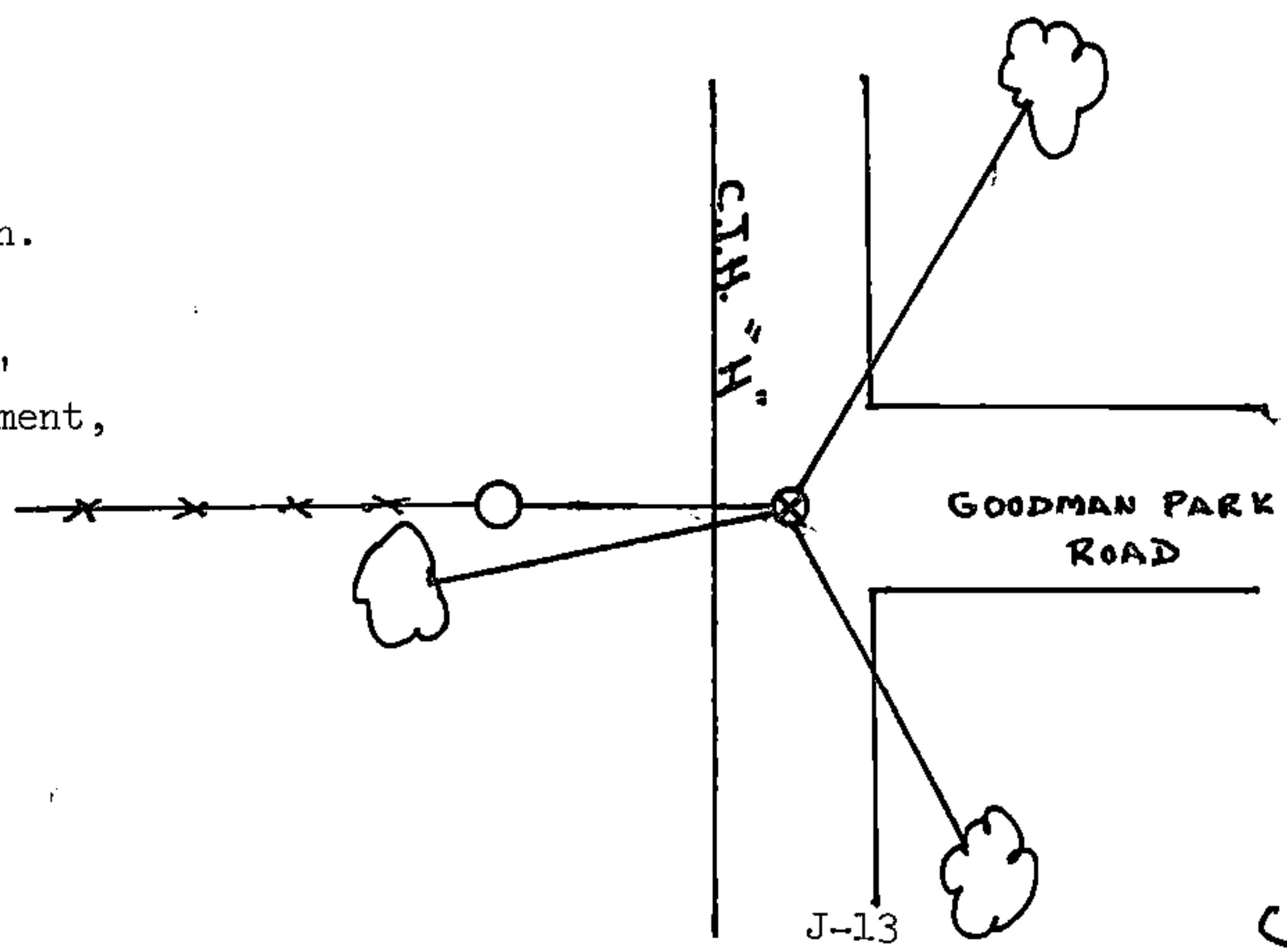
In 1977, Milo Stefan set P.K. at intersection of County " " and Goodman Park Road. Fence line west. Distance south to quarter corner is 2554.21'.

In 1986, Alan Harrison replaced P.K. with a R.R. spike as best evidence of corner position.

(c) In the plan view drawing below, provide reference ties to at least 4 witness monuments, or, if the location is within a municipality, to at least 2 witness monuments. (Witness monuments shall be made of concrete, natural stone, iron or other equally durable material.) Describe witness monuments.

(d) Show a plan view drawing depicting the relevant monuments and reference ties which is sufficient in detail to enable accurate relocation of the corner monument if the corner monument is disturbed. Indicate north.

1. R.R. spike marking corner location.
2. Sugar, 9", N.31°E., 100.31'
3. Sugar, 5", S.28°E., 80.47'
4. Yellow Birch, 13", S.81°W., 53.34'
5. 2 1/2" x 36" aluminum reference monument, West, 40.0'.



J-13

(e) Describe any material discrepancy between the location of the corner as restored or reestablished and the location of that corner as previously restored or reestablished by distance and direction. Show the discrepancy on the plan view drawing under (d), above. Show the distances between the corner as previously restored or reestablished and (1) the corner as restored or reestablished, and (2) to at least 2 of the witness monuments shown on the drawing in (d), above.

None.

(f) Was the corner restored through acceptance of (1) an obliterated evidence location, or, (2) a found perpetuated location?

(1) an obliterated evidence location.

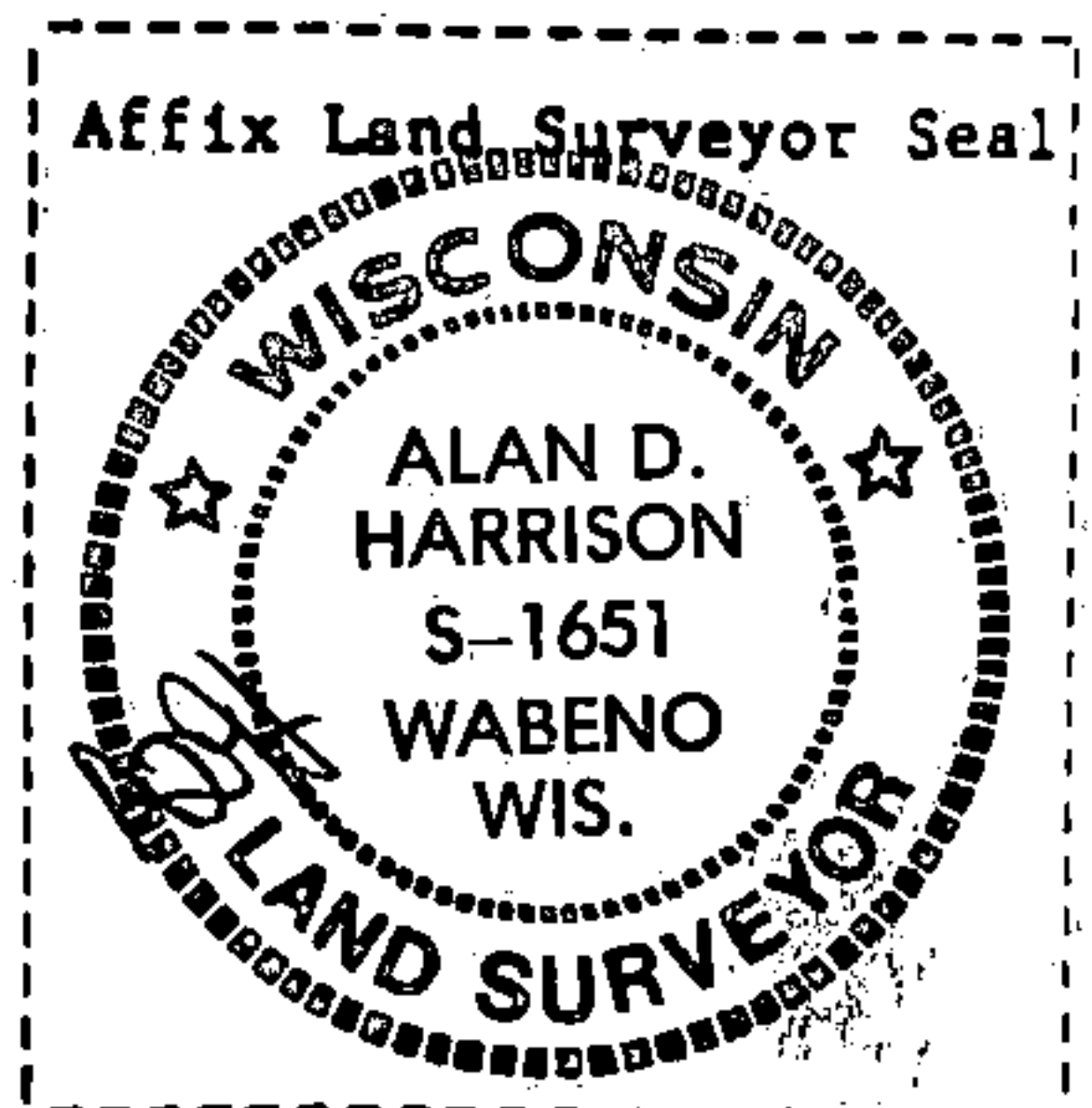
(g&h) Was the corner reestablished through lost corner proportionate methods? If so, show the method, including the directions and distances to other public land survey corners used as evidence or used for proportioning in determining the corner location?

No.

(i) I, Alan D. Harrison
(type or print name) certify that the corner location shown on this record was determined by me or under my direction and control and that this U.S. Public Land Survey Monument Record is correct and complete to the best of my knowledge and belief.

Alan D. Harrison
Signature

8/26/86
Date



U.S. PUBLIC LAND SURVEY MONUMENT RECORD

(As Required By s. A-E 7.08, WI ADM. CODE)

HISTORY OF ORIGINAL CORNER ESTABLISHMENT AND SUBSEQUENT RESTORATIONS AND DESCRIPTION OF ANY RECORD, MONUMENT, OCCUPATIONAL, TESTIMONIAL, OR OTHER EVIDENCE CONSIDERED:

1859 - James McBride set the corner with the following witnesses:

Ironwood 12" N78°W	40 Links	Sugar 24" S55°W	45 Links
Sugar 8" N10°E	42 Links	Sugar 12" S33°E	38 Links

1904 - N. Smith called original BT's okay and distance south to quarter corner 2560.47'. Made new BT, Sugar 8" S71°E 25.08'

1918 - J. Melindy found old post and set 2" gas pipe in pit of stones, fence post at fence corner, S43°50'E, 34.90'. Distance south to quarter corner 2555'.

1977 - Milo Stefan set P.K. at intersection of County H and Goodman Park road. Fence line West. Distance South to quarter corner is 2554.21'.

1986 - Alan Harrison replaced P.K. with R.R. spike as best evidence of corner position.

Sugar 9" N31°E	100.31'	Y. Birch 13" S81°W	53.34'
Sugar 5" S28°E	80.47'	2 1/2" x 36" alum reference mon	West 40.0'

1995 - John Garske, RLS 1685 found R.R. Spike. Plat of Survey for USFS. Refers to Alan Harrison witnesses:

REGISTER'S OFFICE
Forest County, Wis.
Received for record this 30th day
of August A.D., 2012 at
8:55 o'clock A.M. and recorded
in Vol. CORNER RESTORATIONS
page J-13
Cheryl Resitter, Deputy
Register of Deeds

CORNER WAS: (CHECK ALL THAT APPLY)

- RESTORED THROUGH ACCEPTANCE OF AN OBLITERATED LOCATION
- RESTORED THROUGH ACCEPTANCE OF A FOUND PERPETUATED LOCATION
- CONSIDERED A LOST CORNER AND REESTABLISHED THROUGH LOST CORNER PROPORTIONATE METHODS (INCLUDING A PLAN VIEW DRAWING SHOWING DISTANCES AND DIRECTIONS TO OTHER PUBLIC LAND SURVEY CORNERS USED FOR PROPORTIONING AND DETERMINING THE CORNER LOCATION)
- RESTORED OF REESTABLISHED IN A LOCATION THAT DIFFERS FROM A PREVIOUS RESTORATION OF REESTABLISHMENT (INCLUDE A PLAN VIEW DRAWING AND INDICATE WHAT WAS SET AND/OR FOUND)

DESCRIBE THE MONUMENT AND ACCESSORIES USED TO PERPETUATE THE LOCATION OF THIS CORNER. (INCLUDE A PLAN VIEW DRAWING AND INDICATE WHAT WAS SET AND/OR FOUND)

2012 - Zachary J. Stevens, RLS 2467-008, Found the remains of a PK/MAG nail with no head. Set new MAG nail in same position.

Found the following witnesses:

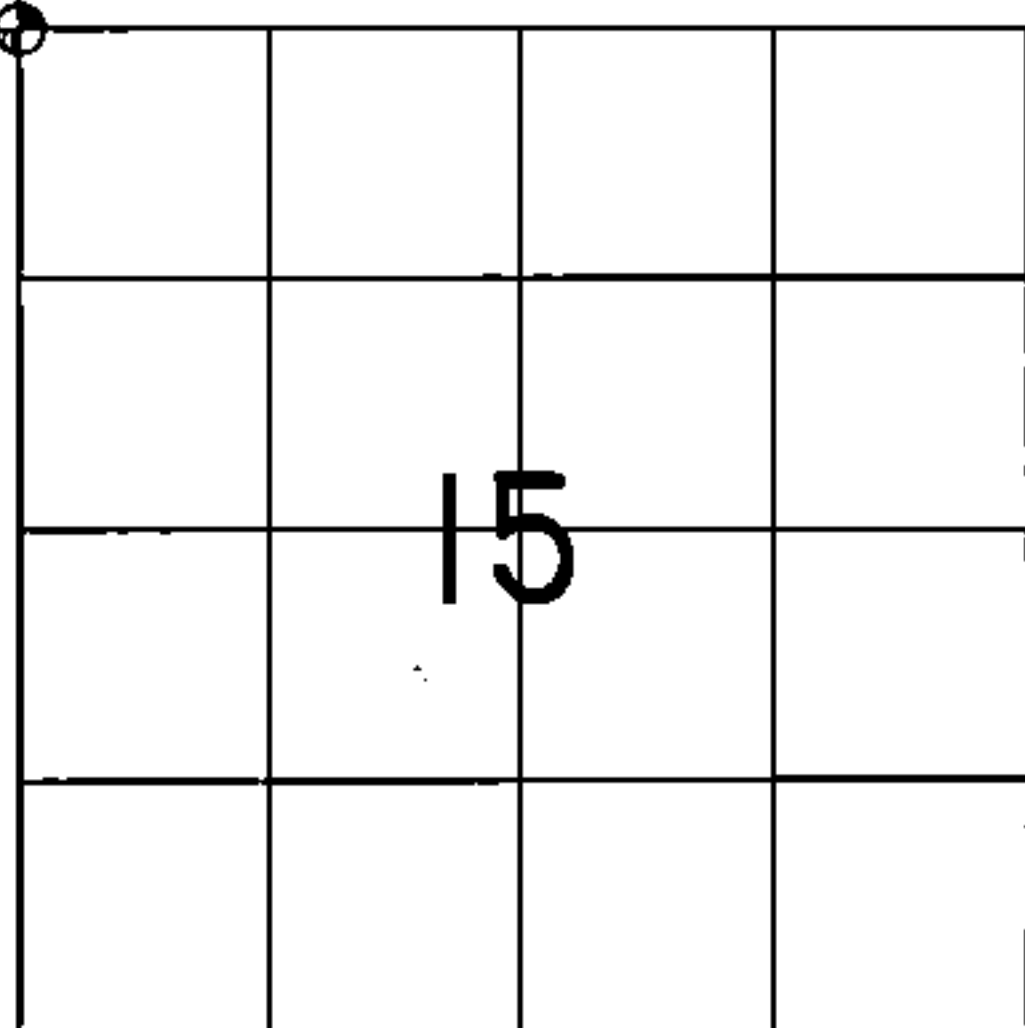
All witnesses from Alan Harrison have been removed except Y. Birch. Nail no longer is visible. Tree has witness tag and Blazes.

Set the following witnesses:

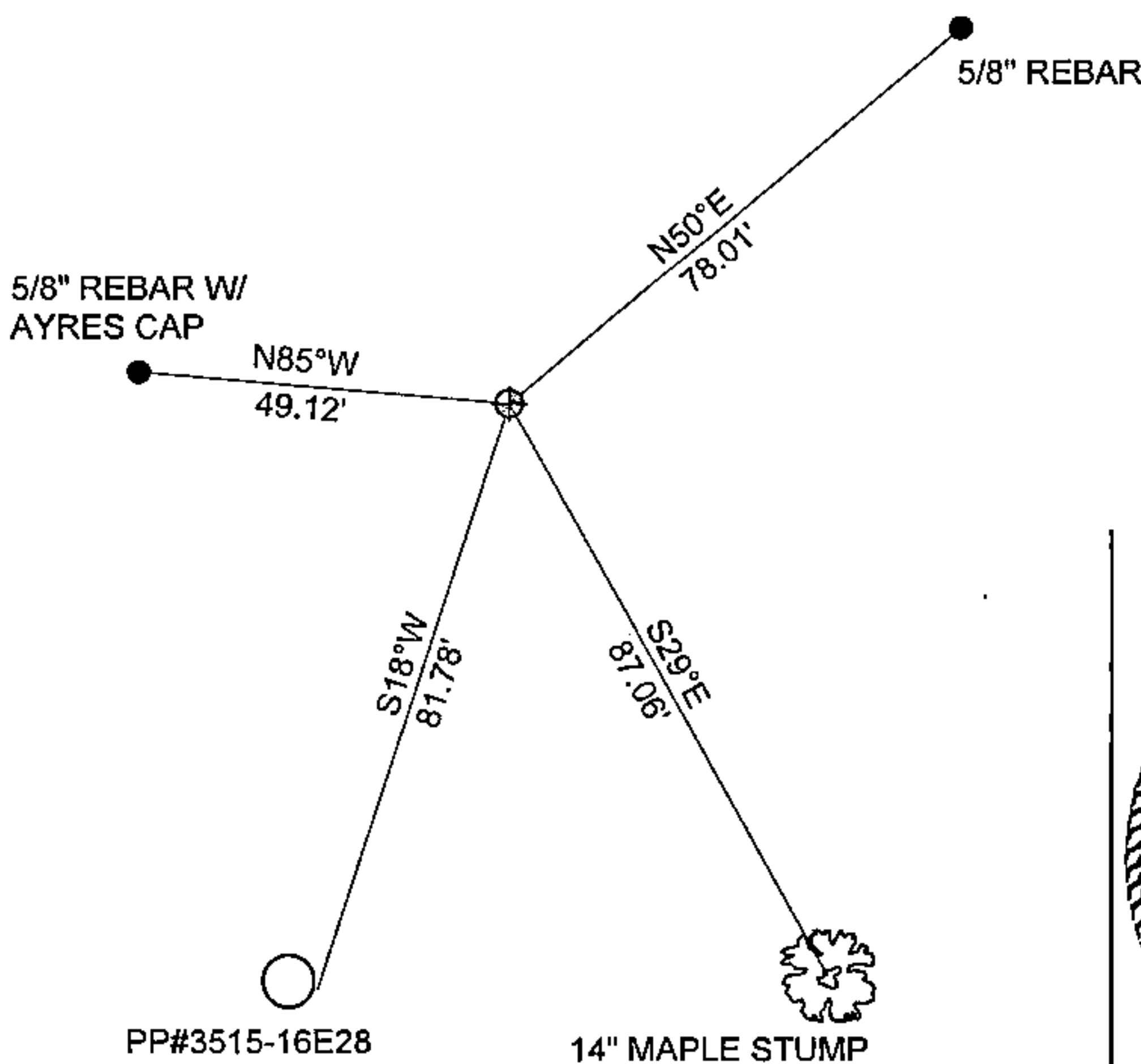
Maple stump 14"	S29°E	87.06'	set DH nail vertically in center of stump.
PP #3515-16E28	S18°W	81.78'	set DH nail
5/8 rebar with AYRES cap	N85°W	49.12'	Found 5/8" rebar with AYRES cap
5/8 rebar	N50°E	78.01'	set 5/8 rebar flush with ground in clear vision area

Corner falls 1' West of N/S center line of CTH "H"

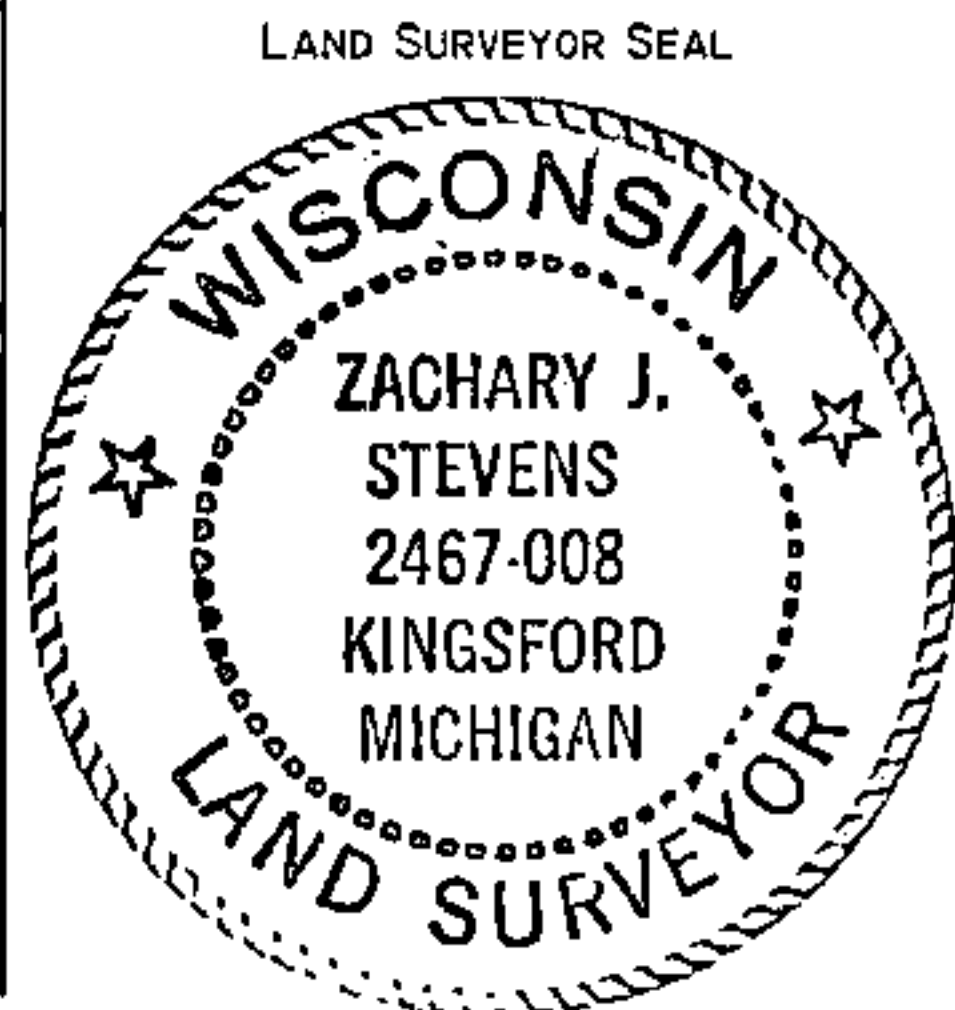
The Northwest
corner of Section 15
T. 35N, R15E
Forest County, Wisconsin



= LOCATION OF CORNER



1" = 40'



I, ZACHARY J. STEVENS R.L.S. S 2467-008

(TYPE OR PRINT NAME) CERTIFY THAT THE CORNER LOCATION SHOWN ON THIS ABOVE RECORD WAS DETERMINED BY ME OR UNDER MY DIRECTION AND CONTROL AND THAT THIS U.S. PUBLIC LAND SURVEY MONUMENT RECORD IS CORRECT AND COMPLETE TO THE BEST OF MY KNOWLEDGE AND BELIEF.

Zachary J. Stevens 8/30/12
SIGNATURE DATE

INDEX No. J-13

4351509 0000