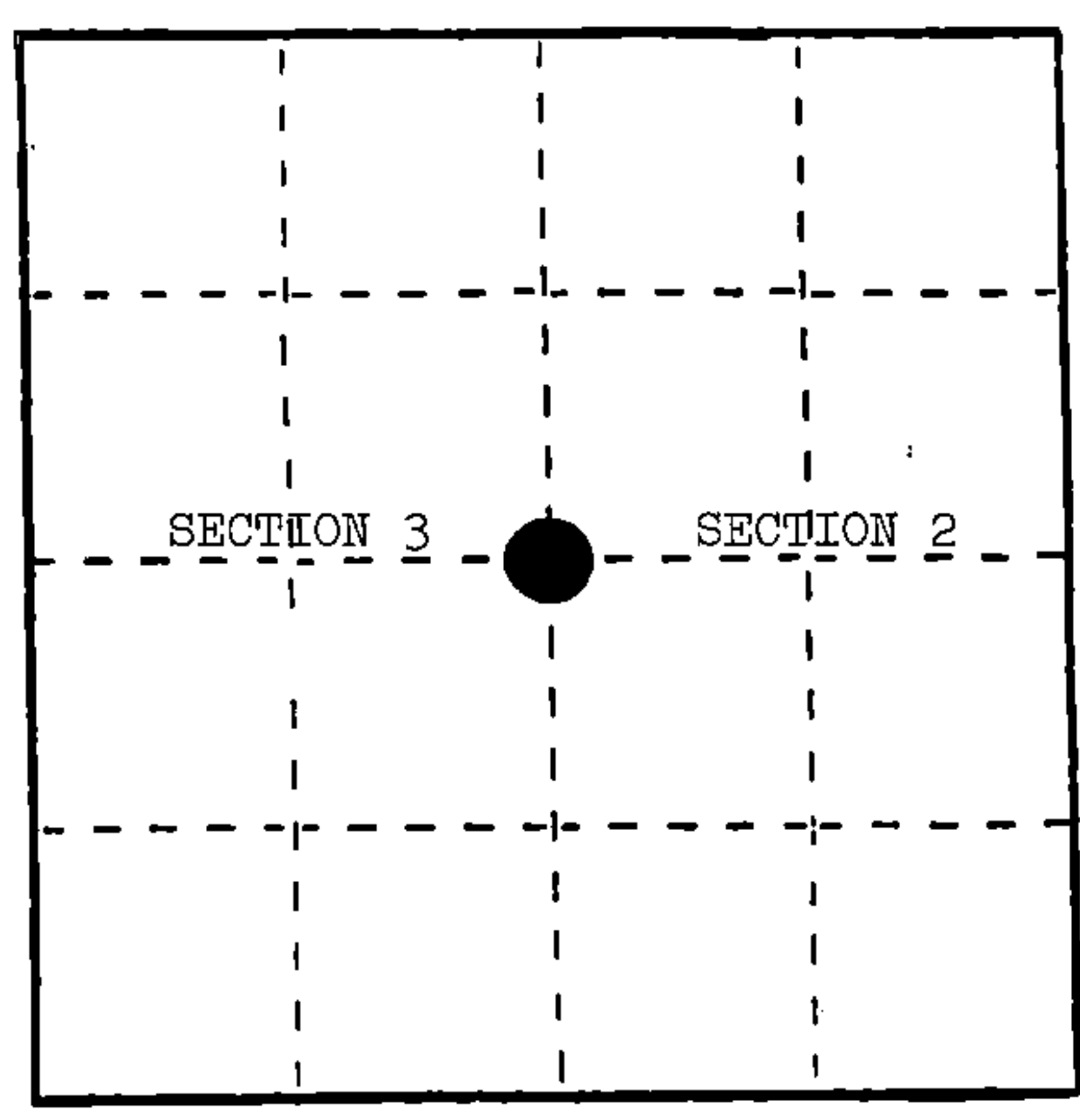


U. S. PUBLIC LAND SURVEY MONUMENT RECORD

INSTRUCTIONS: This record shall show the location of the corner and shall include all of the following nine elements (a through i).

- (a) Identify the corner by reference to the U.S. public land survey system.
- = Corner monument restored.

Quarter corner to Sections 2 and 3, T.35N., R.15E.



REGISTER'S OFFICE
Forest County, Wis.
Received for record this 14th day
of March A.D., 1986 at
10:25 o'clock A.M. and recorded
In Vol. CORNER RESTORATIONS
page C-17
Paul Aschenbrenner
Register of Deeds

- (b) Describe any record evidence, monument evidence, occupational evidence, testimonial evidence or any other material evidence you considered, and whether the monument was found or placed.

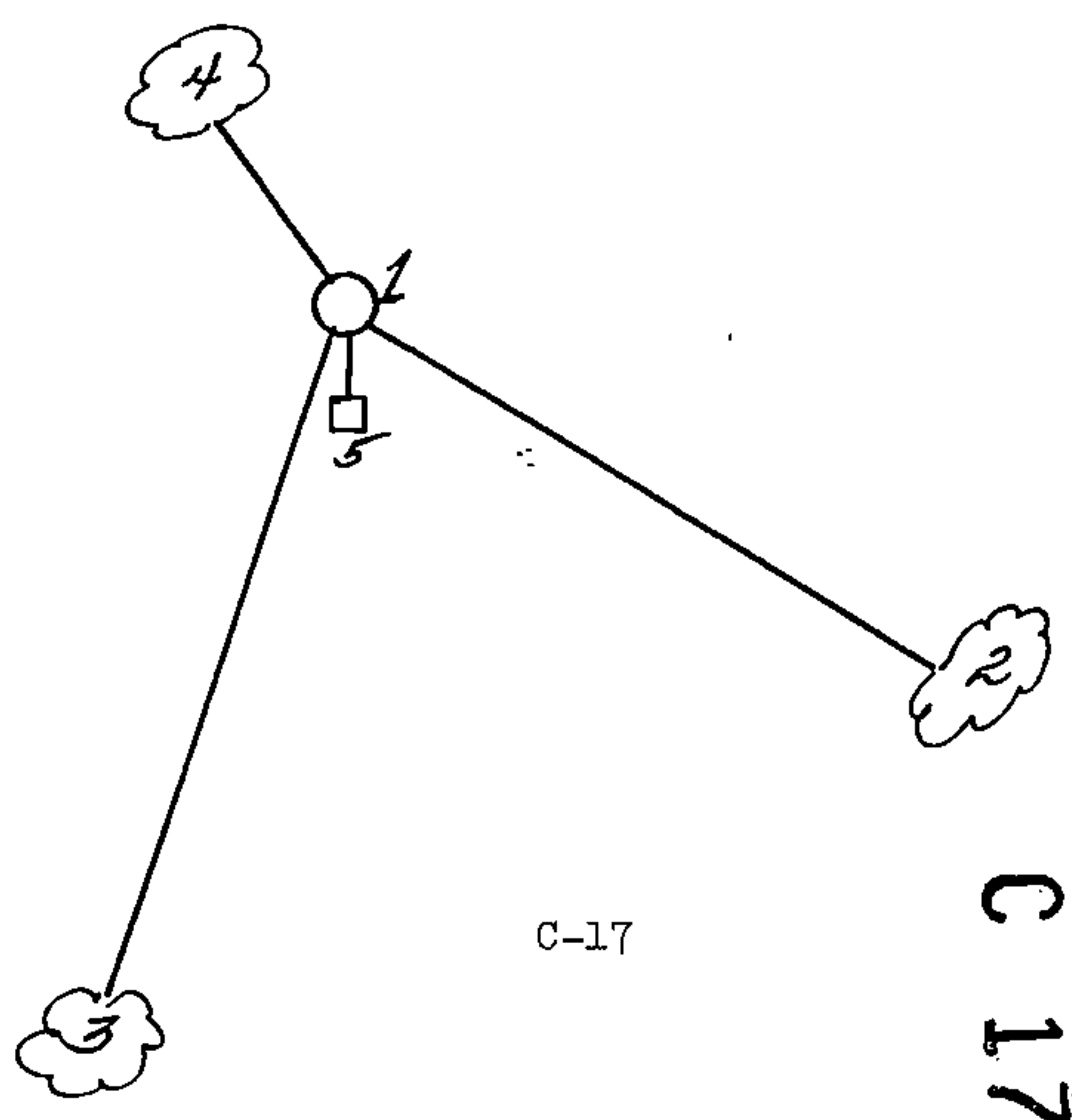
In 1859, James McBride set quarter post and made the following BTs: Hemlock, 14", N.85°W., 23 links; Sugar, 12", N.39°E., 19 links.

In 1907, Nathan Smith found post and original Sugar as high stump. Made new BTs: Sugar, 16", N.45°W., 38 links.

In 1982, Milo Stefan found 2" iron pipe in mound of rock with rotted wood post alongside--from which the remains of the original and Smith's BTs were located. Set monument and new references.

- (c) In the plan view drawing below, provide reference ties to at least 4 witness monuments, or, if the location is within a municipality, to at least 2 witness monuments. (Witness monuments shall be made of concrete, natural stone, iron or other equally durable material.) Describe witness monuments.

- (d) Show a plan view drawing depicting the relevant monuments and reference ties which is sufficient in detail to enable accurate relocation of the corner monument if the corner monument is disturbed. Indicate north.
1. 2" x 36" aluminum monument stamped to identify the corner location.
 2. Hemlock, 16", S.59°E., 57.50 feet
 3. Yellow Birch, 12", S.7°W., 33.80 feet
 4. Basswood, 12", N.39°W., 9.28 feet
 5. Steel Sign Post, South, 1.75 feet



- (e) Describe any material discrepancy between the location of the corner as restored or reestablished and the location of that corner as previously restored or reestablished by distance and direction. Show the discrepancy on the plan view drawing under (d), above. Show the distances between the corner as previously restored or reestablished and (1) the corner as restored or reestablished, and (2) to at least 2 of the witness monuments shown on the drawing in (d), above.

None.

- (f) Was the corner restored through acceptance of (1) an obliterated evidence location, or, (2) a found perpetuated location?

(2) a found perpetuated location.

- (g&h) Was the corner reestablished through lost corner proportionate methods? If so, show the method, including the directions and distances to other public land survey corners used as evidence or used for proportioning in determining the corner location?

No.

- (i) I, Milo E. Stefan
(Type or print name) certify that the corner location shown on this record was determined by me or under my direction and control and that this U.S. Public Land Survey Monument Record is correct and complete to the best of my knowledge and belief.

Milo E. Stefan
Signature

3/11/86
Date

Affix Land Surveyor Seal



Document Number

189318

REGISTER'S OFFICE
Forest County, Wis.
Received for record this 18th day
of November A.D., 2005 at
3:55 o'clock P. M. and recorded
in Vol. Corner Restoration
page C-17
Kay Swanson, Deputy
Register of Deeds

U.S. PUBLIC LAND SURVEY MONUMENT RECORD

(AS REQUIRED BY S. A-E 5.02, WI ADM. CODE)

HISTORY OF ORIGINAL CORNER ESTABLISHMENT AND SUBSEQUENT RESTORATIONS AND DESCRIPTION OF ANY RECORD, MONUMENT, OCCUPATIONAL, TESTIMONIAL, OR OTHER EVIDENCE CONSIDERED:

1859 - JAMES McBRIDE, SURVEYOR, SET POST

SET THE FOLLOWING WITNESSES:
HEMLOCK 14" N85°W 23 LINKS
SUGAR MAPLE 12" N39°E 19 LINKS

1907 - NATHAN SMITH, FOUND POST AND ORIGINAL SUGAR MAPLE AS HIGH STUMP.

SET THE FOLLOWING WITNESSES:
SUGAR MAPLE 16" N45°W 38 LINKS

1982 - MILO STEFAN, SURVEYOR, S-1558, FOUND A 2" IRON PIPE IN MOUND OF ROCKS WITH ROTTED WOOD POST ALONGSIDE FROM WHICH THE REMAINS OF THE ORIGINAL AND SMITH'S BT'S WERE LOCATED. SET 2" X 36" ALUMINUM MONUMENT STAMPED TO IDENTIFY CORNER LOCATION.

SET THE FOLLOWING WITNESSES:
HEMLOCK 16" S59°E 57.50 FEET
YELLOW BIRCH 12" S07°W 33.80 FEET
BASSWOOD 12" N39°W 9.28 FEET
STEEL SIGN POST SOUTH 1.75 FEET

CORNER WAS: (CHECK ALL THAT APPLY)

- ☐ RESTORED THROUGH ACCEPTANCE OF AN OBLITERATED LOCATION
☒ RESTORED THROUGH ACCEPTANCE OF A FOUND PERPETUATED LOCATION
☐ CONSIDERED A LOST CORNER AND REESTABLISHED THROUGH LOST CORNER PROPORTIONATE METHODS (INCLUDING A PLAN VIEW DRAWING SHOWING DISTANCES AND DIRECTIONS TO OTHER PUBLIC LAND SURVEY CORNERS USED FOR PROPORTIONING AND DETERMINING THE CORNER LOCATION)
☐ RESTORED OF REESTABLISHED IN A LOCATION THAT DIFFERS FROM A PREVIOUS RESTORATION OF REESTABLISHMENT (INCLUDE A PLAN VIEW DRAWING AND INDICATE WHAT WAS SET AND/OR FOUND)

DESCRIBE THE MONUMENT AND ACCESSORIES USED TO PERPETUATE THE LOCATION OF THIS CORNER. (INCLUDE A PLAN VIEW DRAWING AND INDICATE WHAT WAS SET AND/OR FOUND)

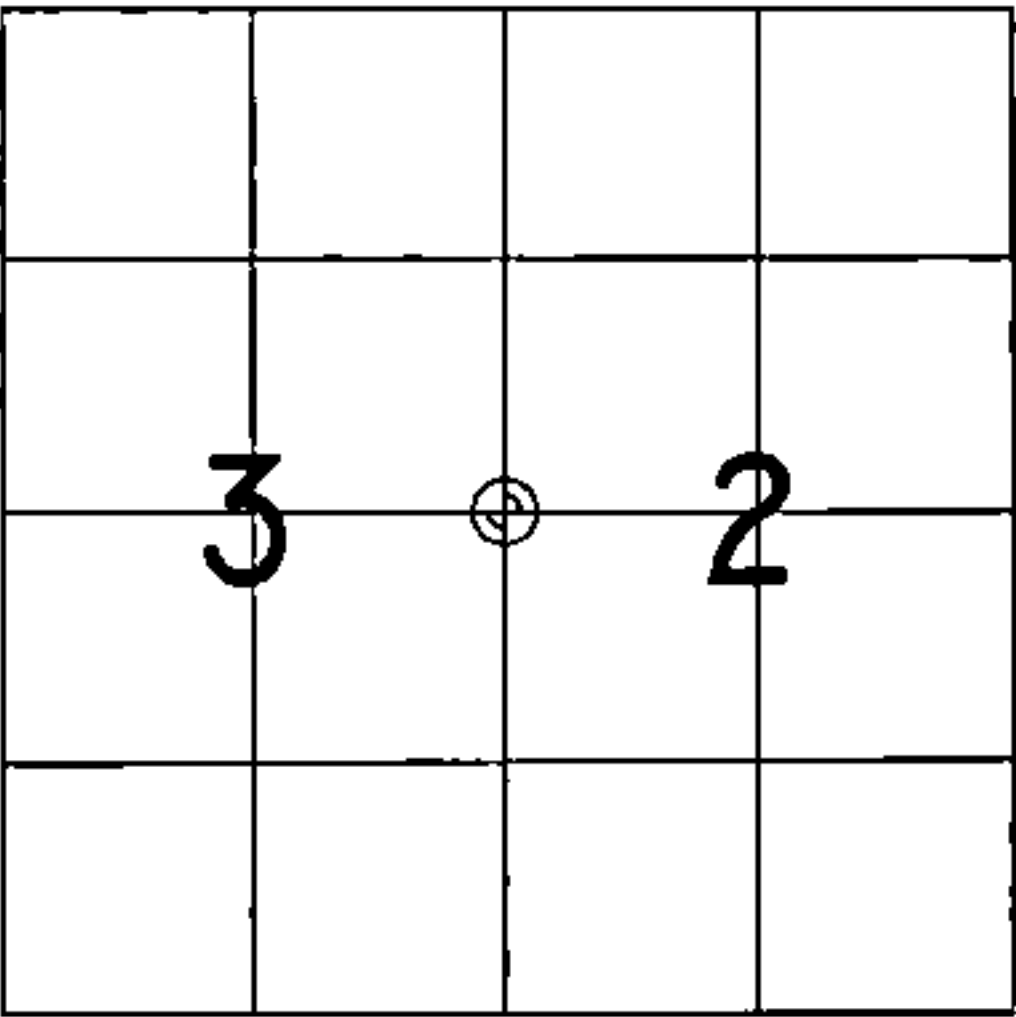
FOUND ALUMINUM MONUMENT IN A MOUND OF STONES.

FOUND THE FOLLOWING WITNESSES:
BIRCH 16" (DEAD) S10°W 33.62 FEET - FOUND NAIL IN TREE
BASSWOOD 18" N43°W 9.35 FEET - SET NAIL IN TREE
HEMLOCK 21" N07°E 18.34 FEET - FOUND NAIL IN TREE
HEMLOCK 20" S55°E 57.62 FEET - SET NAIL IN TREE
STEEL SIGN SOUTH 1.50 FEET

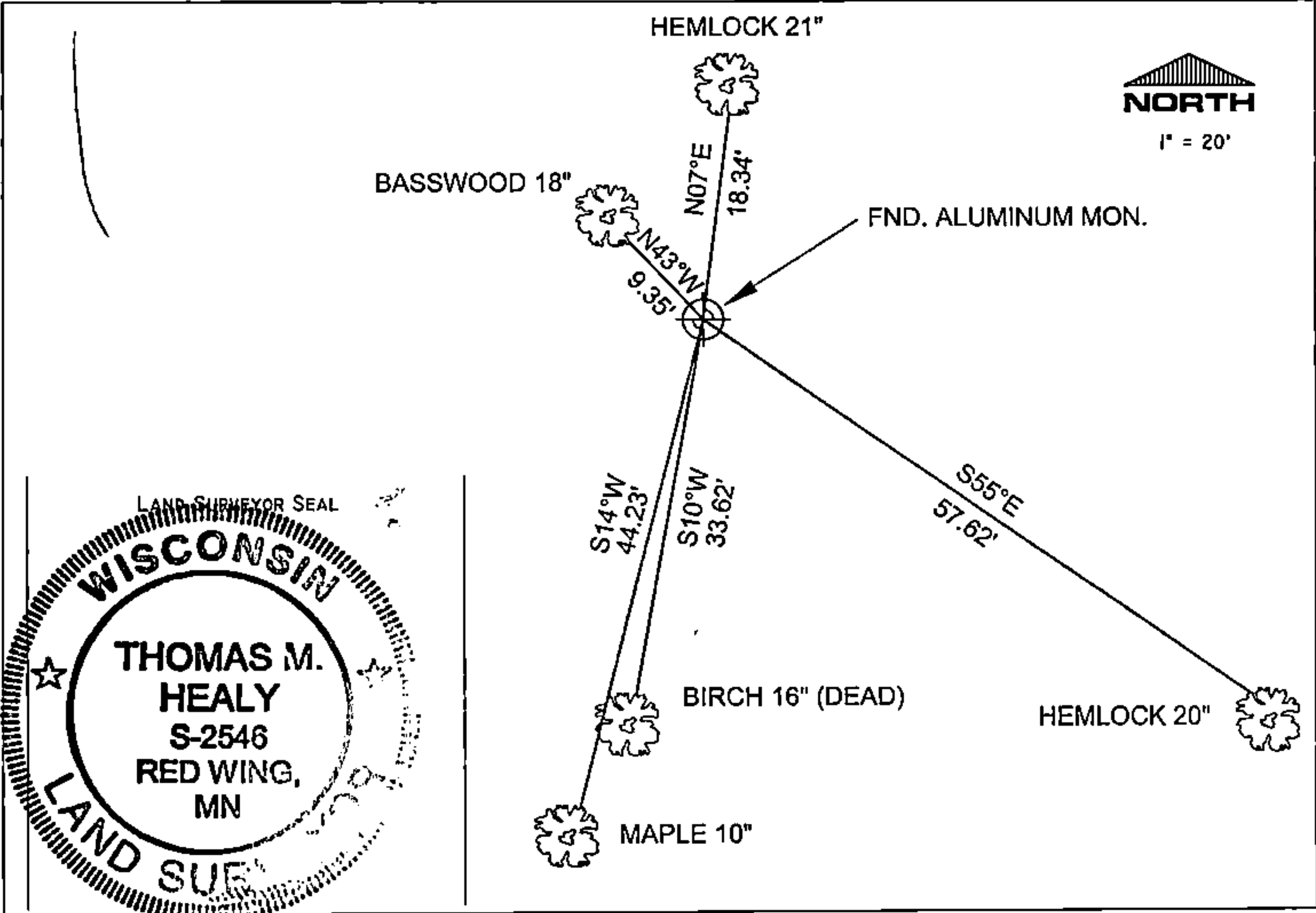
SET THE FOLLOWING WITNESSES:
MAPLE 10" S14°W 44.23 FEET - SET NAIL IN TREE

ALL TREES HAVE CHEST & STUMP BLAZES.

THE WEST 1/4
CORNER OF SECTION 2,
T. 35 N., R. 15 E.,
FOREST COUNTY, WISCONSIN



⊕ = LOCATION OF CORNER



I, THOMAS M. HEALY R.L.S. 2546

(TYPE OR PRINT NAME) CERTIFY THAT THE CORNER LOCATION SHOWN ON THIS ABOVE RECORD WAS DETERMINED BY ME OR UNDER MY DIRECTION AND CONTROL AND THAT THIS U.S. PUBLIC LAND SURVEY MONUMENT RECORD IS CORRECT AND COMPLETE TO THE BEST OF MY KNOWLEDGE AND BELIEF.

TH M. HEALY 11-17-05
SIGNATURE DATE

INDEX No. C-17

43515032000

11-17