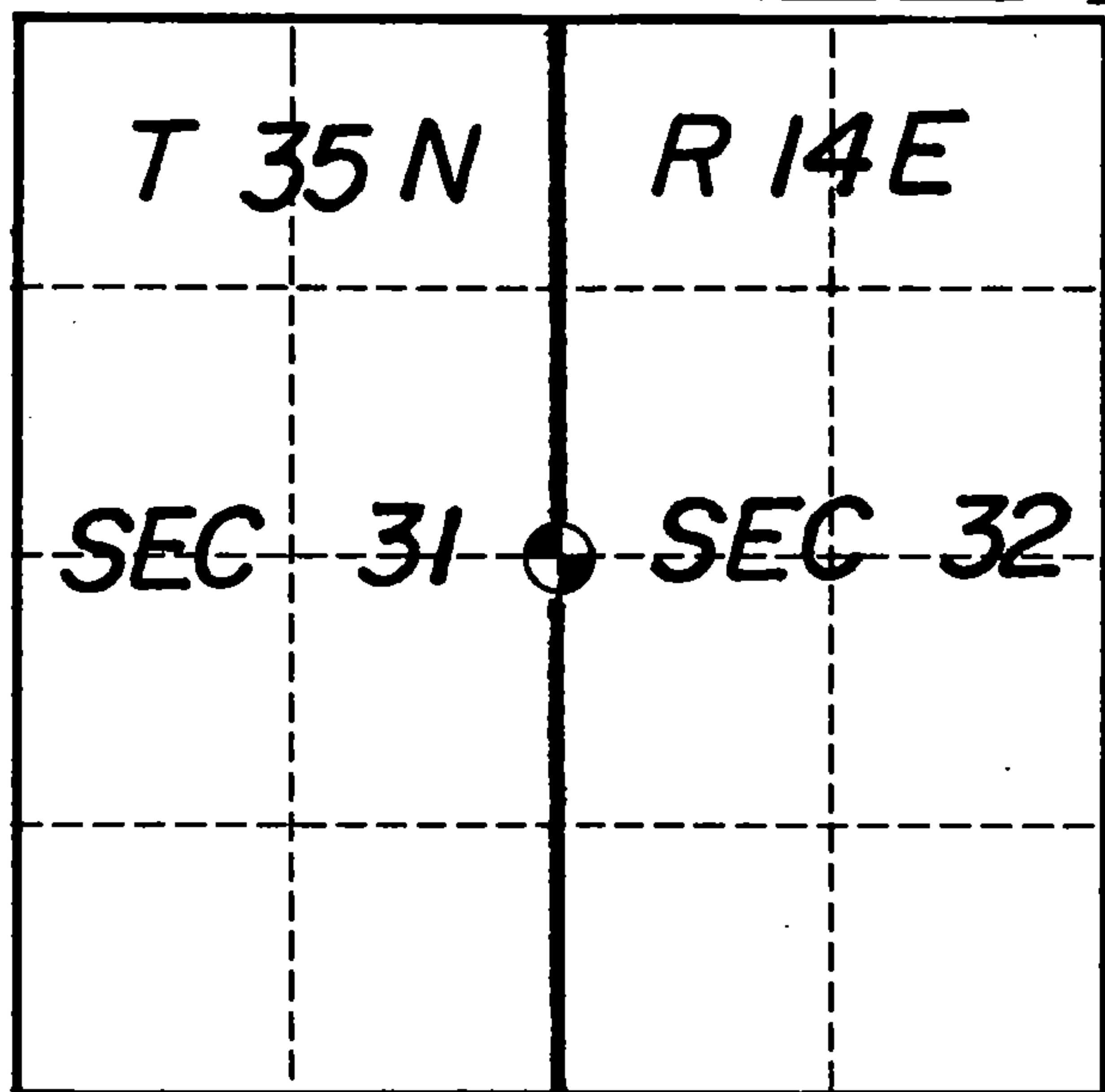


# U. S. PUBLIC LAND SURVEY MONUMENT RECORD

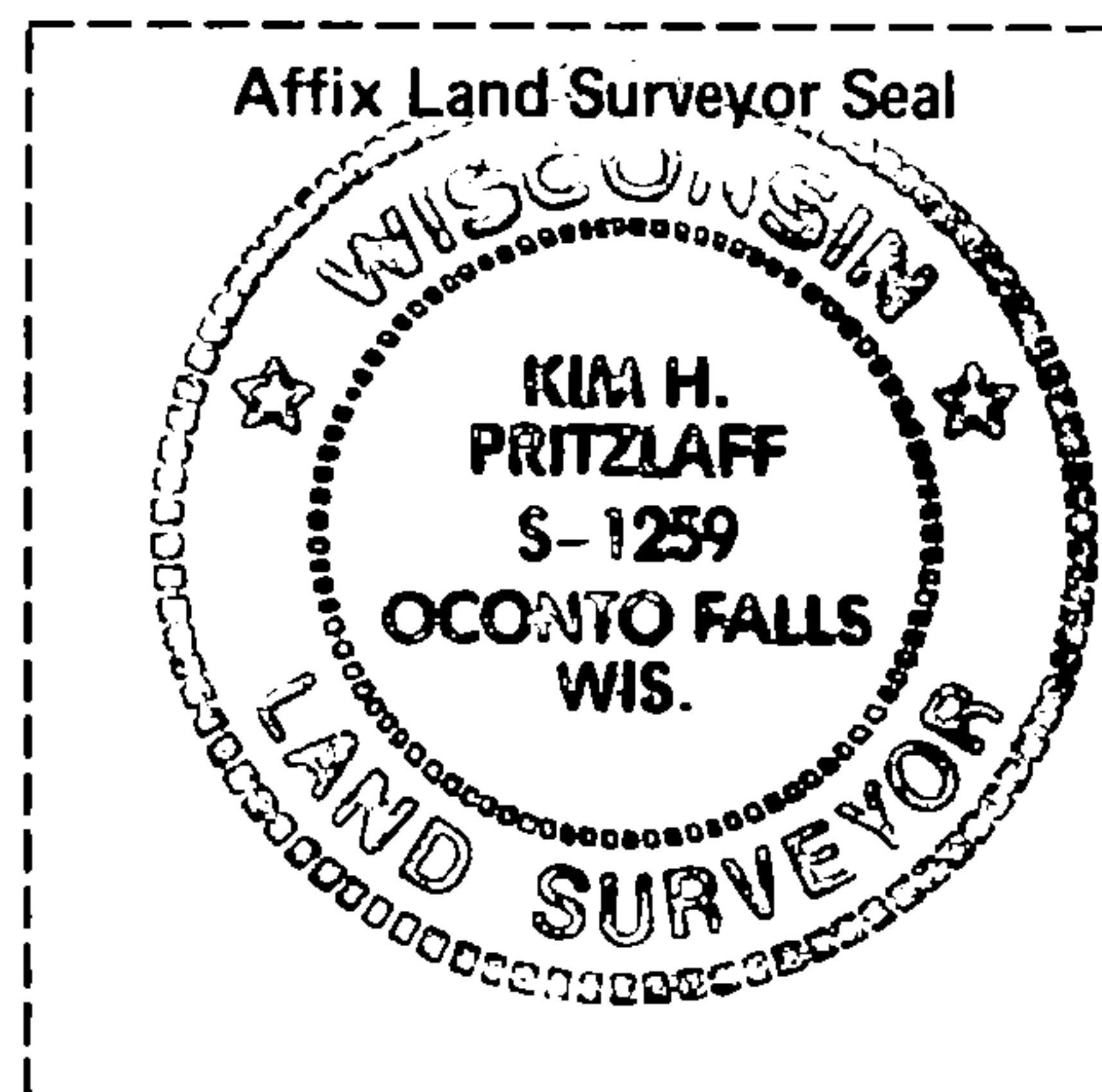
INDEX NO. X-5

Quarter \_\_\_\_\_ Corner to Section 31 32 T 35 N, R 14 E  
(Section/Quarter)



Show distances and bearings if set by proportional measurement.

○ = Corner monument restored.



Set a 2"x 36" aluminum monument with cap stamped for corner. Ties are to aluminum nails driven into the tree centers which trees were blazed and scribed. Bearings are magnetic.

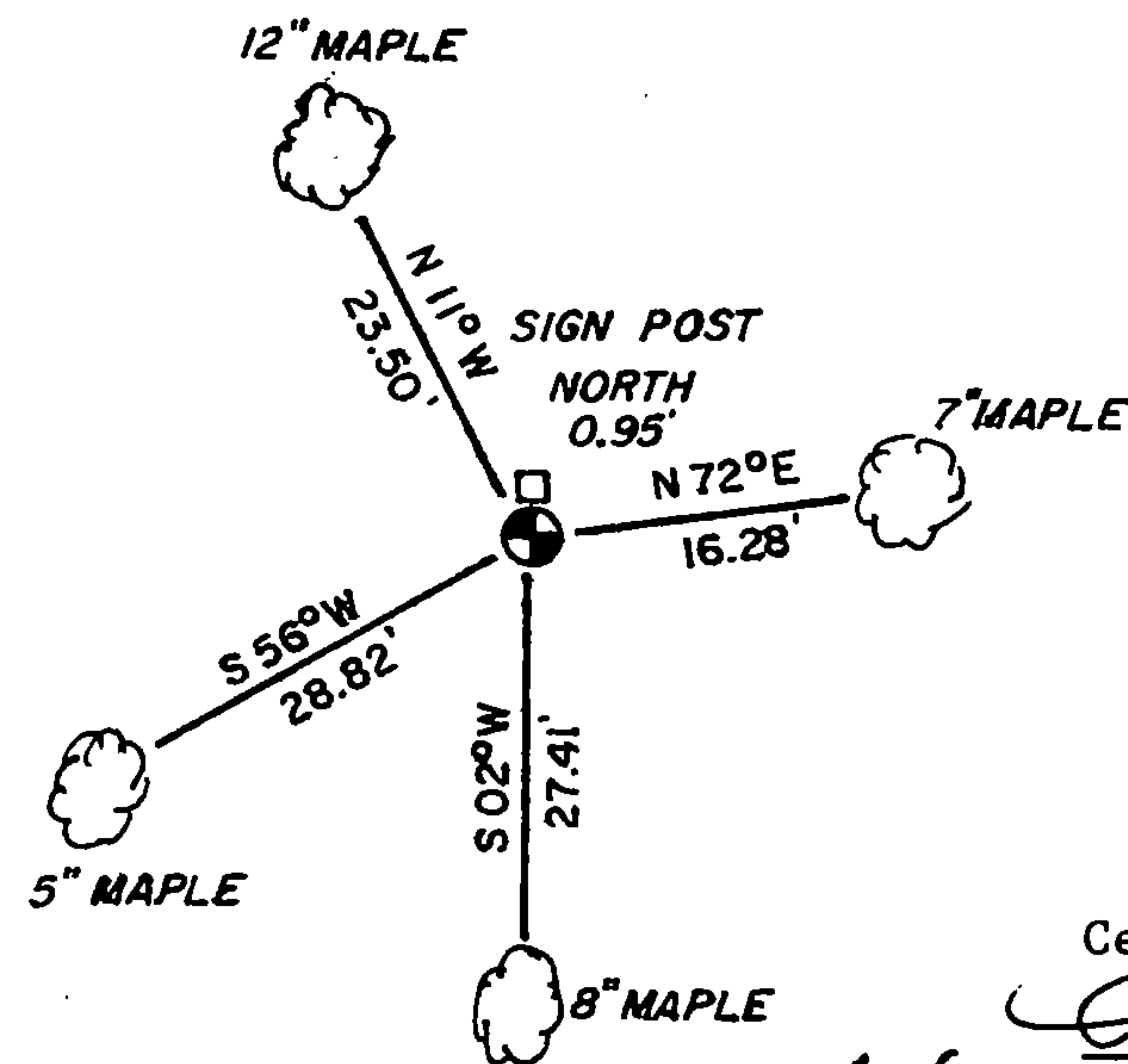
History of original corner establishment, record evidence, monument evidence, occupational evidence, testimonial evidence or any other material evidence, and what you found and how the monument was set.

In 1859 James McBride, contract surveyor, set this corner at 40 chains and marked the following bearing trees:

Birch	10"	S67W	20 links
Hemlock	7"	S72E	17 "

A search area was set up at the single proportionate position for this corner and a ribbon, old and faded was found tied onto a nearby small Maple. Near the Maple tree I recovered a 30" rotted Hemlock stump. I pulled N72W for 11 feet and uncovered a rotted post made up of vertical fibers in an old post hole. I then pulled S67W for 20 links and found a turnout but no Birch evidence. The post fell within 10 feet of the single proportionate position. I accepted the post evidence and monumented same.

In the plan view drawing below, provide reference ties to at least 4 witness monuments, or, if the location is within a municipality, to at least 2 witness monuments. (Witness monuments shall be made of concrete, natural stone, iron or other equally durable material, except wood other than bearing trees.) Also, show any material discrepancies between the corner restored or re-established and the location of any other previous corner location or occupation.



I, Kim H Pritzlaff, RLS No. 1259  
(Type or print name) certify that the corner location shown on this record was determined by me or under my direction and control and that this U.S. Public Land Survey Monument Record is correct and complete to the best of my knowledge and belief.

*Kim Pritzlaff*  
Signature

1993  
Date

Certificate Ready For Filing:

*Ralph [Signature]*  
District Ranger

149074

43514312000

INDEX NO. \_\_\_\_\_

MAINTENANCE RECORD

Condition of Monument \_\_\_\_\_

Condition of Ties \_\_\_\_\_

New Ties, if any:

\_\_\_\_\_ Date

\_\_\_\_\_ Signature

Condition of Monument \_\_\_\_\_

Condition of Ties \_\_\_\_\_

New Ties, if any:

\_\_\_\_\_ Date

\_\_\_\_\_ Signature

Condition of Monument \_\_\_\_\_

Condition of Ties \_\_\_\_\_

New Ties, if any:

\_\_\_\_\_ Date

\_\_\_\_\_ Signature



At 9<sup>00</sup> clock M. *Paul A. Schenck* Register of Deeds