

U S PUBLIC LAND SURVEY MONUMENT RECORD

NOTE: This form is intended and designed to fulfill all requirements of Wisconsin Administrative Code, Chapter A-E 7.08 U.S. Public Land Survey Monument Record (3) (a-i)

A-E 7.08(3)(a) Identity of corner
SOUTH 1/4 CORNER SECTION 31
TOWNSHIP 35 NORTH
RANGE 14 EAST OF THE 4TH PM
TOWN OF LAONA, COUNTY OF FOREST

WISCORS - FOREST COUNTY
N: 531,998.991 USft
E: 865,204.252 USft
Datum: NAD83 (2011)
GNSS Method RTN - Direct
GNSS Control WISCORS VRS



The coordinate value shown has been verified by: the average of two or more GPS observations at a markedly different time.

A-E 7.08(3)(b) Description of any record evidence, monument evidence, occupational evidence, testimonial evidence, or any other material evidence.

Original Surveyor: Alfred Millard

Date of Original Survey Commenced: June 30 1857
Completed: No Date Found, 1857

Original Accessories:

B Oak 14 N 15° W 5 Links
Y Birch 20 S 27° W 9 Links

See Previous Monument Record:
Index No. 83 (Z 3)
Document No. 85682

June - 1938 - Surveyor W. Stenerson, indicates this corner as "1/4" on Slowe's Plat of Roberts Lake.

July - August 1946 - Hugh B. Crawford, Assistant Cadastral Engineer - U.S. Department of the Interior - B.L.M.

Dependant Resurvey and Extension Survey, Section 6, T. 34 N., R. 14 E., 4th Principal Meridian

"Point for the 1/4 sec. cor., which is marked by a cedar post, 4 ins. sq., 36 ins. long, mkd. 1/4 S on E., S6 on S. and S31 on N. Mr. Stenerson, Surveyor, Laona, Wisconsin, stated that this cor. point was established from the original bearing trees; there is no remaining evidence of the original bearing trees at this time.

Set Concrete Monument 24 ins. long, 6 ins. diam. 20 ins. in the ground, with an iron post 23 ins. long, 1 in. diam., embedded in the center, with a brass cap mkd."

April 11 - 1947 - Surveyor W. Stenerson, indicates this corner as "North One-Quarter Corner of Section 6 T.34N. R.14E." on Connor's Original Plat of Roberts Lake.

1962 - Surveyor 670 - George V. Kapitiz - "found concrete monument with brass cap" and prepared a Certified Land Corner Restoration Index No. 83 (Z 3) - Document Number 85682.

Kapitiz also found the following witness trees:

Birch 13", N 31° E, 24.7 ft. (Gone)

Hemlock 21 1/2", S 27 3/4° W, 29.70 ft. (Gone)

Hemlock 11", S 29° E, 10.20 ft. - Notes: the this B.T. is unrecorded and dead (Gone)

Kapitiz Established accessories:

Blazed and scribed Y. Birch, 10", N 28° W, 18.10 ft. (Gone)

1983 - Surveyor 1651 - Alan D. Harrison - Indicates a "G.L.O. Brass Capped Concrete Monument" at this location on Certified Survey Map, Document No. 127413, Volume 3 of Certified Surveys on Page 159 (recorded February 5, 1985).

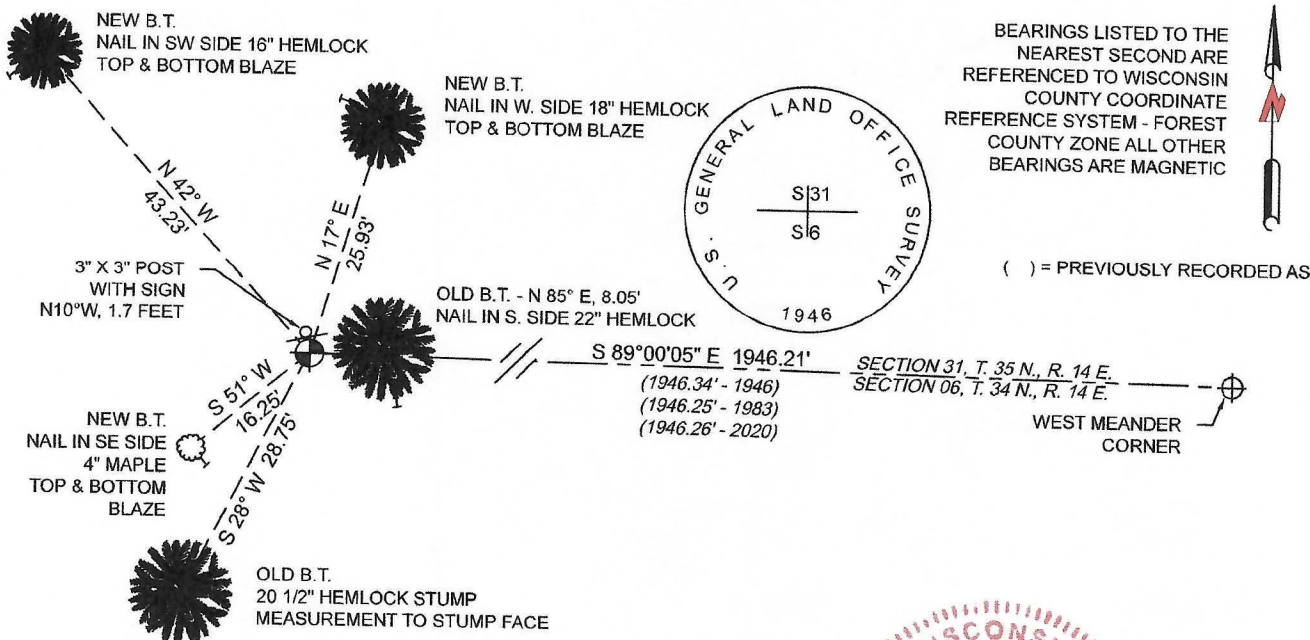
June 22, 2020 - Surveyor 2671 - Timothy J. Rusch - Indicates a "Found Brass Capped Monument" at this location on Certified Survey Map, Document No. 230956, Volume 10 of Certified Surveys on Page 28-28A.

A-E 7.08(3)(f) Whether the corner was restored through acceptance of an obliterated location or a found perpetuated location.

June 9, 2021 - I found a 6" diameter concrete monument with a 2 1/2" diameter brass cap stamped to identify the corner flush with the ground, and one remaining Hugh Crawford bearing tree in the condition shown below.

I accept this monument as a FOUND PERPETUATED LOCATION OF THE CORNER and established new witnesses as shown below.

A-E 7.08(3)(c)(d)(e)(h) Plan view of corner with references to at least 4 witness monuments. If in disagreement with previously established corner, show the distances between the two corners and also indicate the ties to the disputed. The directions and distances to other public land survey corners used as evidence or used for determining the corner location.



A-E 7.08(3)(i) I, Jeffrey L. DeMuth, Professional Land Surveyor No. S-2656, hereby certify that the corner location on this record was determined by me or under my direction and control and that this U.S. Public Land Survey Monument Record is correct and complete to the best of my knowledge, and belief

February 2, 2022

DATE



43514310020