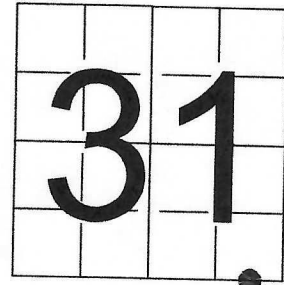


U S PUBLIC LAND SURVEY MONUMENT RECORD

NOTE: This form is intended and designed to fulfill all requirements of Wisconsin Administrative Code, Chapter A-E 7.08 U.S. Public Land Survey Monument Record (3) (a-i)

A-E 7.08(3)(a) Identity of corner
WEST MEANDER CORNER SOUTH LINE OF
SECTION 31
TOWNSHIP 35 NORTH
RANGE 14 EAST OF THE 4TH PM
TOWN OF LAONA, COUNTY OF FOREST

WISCORS - FOREST COUNTY
N: 531,965.072 USft
E: 867,150.162 USft
Datum: NAD83 (2011)
GNSS Method RTN - Direct
GNSS Control WISCORS VRS



The coordinate value shown has been verified by: the average of two or more GPS observations at a markedly different time.

A-E 7.08(3)(b) Description of any record evidence, monument evidence, occupational evidence, testimonial evidence, or any other material evidence.

Original Surveyor: Alfred Millard

Date of Original Survey Commenced: June 30 1857
Completed: No Date Found, 1857

Original Accessories:

Cedar 10 N 70° W 14 Links
Cedar 10 N 4° E 27 Links

See Previous Monument Record:

Index No. A - 3,4

Document No. 131262 - Corner ID # 43514310015

June - 1938 - Surveyor W. Stenerson, indicates this corner as "M.C." on Slowe's Plat of Roberts Lake.

July - August 1946 - Hugh B. Crawford, Assistant Cadastral Engineer - U.S. Department of the Interior - B.L.M.

Dependant Resurvey and Extension Survey, Section 6, T. 34 N., R. 14 E., 4th Principal Meridian

"Point for the meander cor. of secs. 6 and 31, as determined by producing the line established by Mr. Stenerson record distance; this corner was in place at the time he established the property line; point falls on filled land some distance from the present lakes shore.

Set Concrete Monument 24 ins. long, 6 ins. diam. 30 ins. in the ground, with an iron post 23 ins. long, 1 in. diam., embedded in the center, with a brass cap mkd."

1962 - Victor Hedman (surveyor?) found the monument under the surface of blacktop and noted that the brass cap was broken off and 1" pipe in center was bent over. Hedman made new references.

1983 - Surveyor 1651 - Alan D. Harrison - Indicates a "2" x 36 "Aluminum Monument Replacing G.L.O. Monuments Destroyed" at this location on Certified Survey Map, Document No. 127413, Volume 3 of Certified Surveys on Page 159 (recorded February 5, 1985).

March 10, 1989 - Surveyor 887 - Thomas R. Arnott - Indicates a "Iron Pipe Found" at this location on Certified Survey Map, Document No. 137056, Volume 4 of Certified Surveys on Page 61

September 11, 1986 - Surveyor 1651 - Alan D. Harrison - "the corner and a 20" Cedar snag, West 273.1 feet were found and references made."

Harrison prepared U.S. Public Land Survey Monument Record - Index No. A-3, 4 - Document Number 131262, which indicates the corner to be a 1" iron pipe 5" below the surface of road.

Established reference monuments:

Red Pine, 6" N.63°E., 122.54 feet. (DeMuth found a Red Pine B.T. as shown below, bearing and distance do not agree)

Northeast corner of Wildrose Supper Club, S.52°W., 87.19 feet (Gone)

Double Oak, 13", N.14°W., 81.78 feet (Gone)

Cedar snag, 20", West, 273.1 feet (DeMuth did not look for Cedar snag)

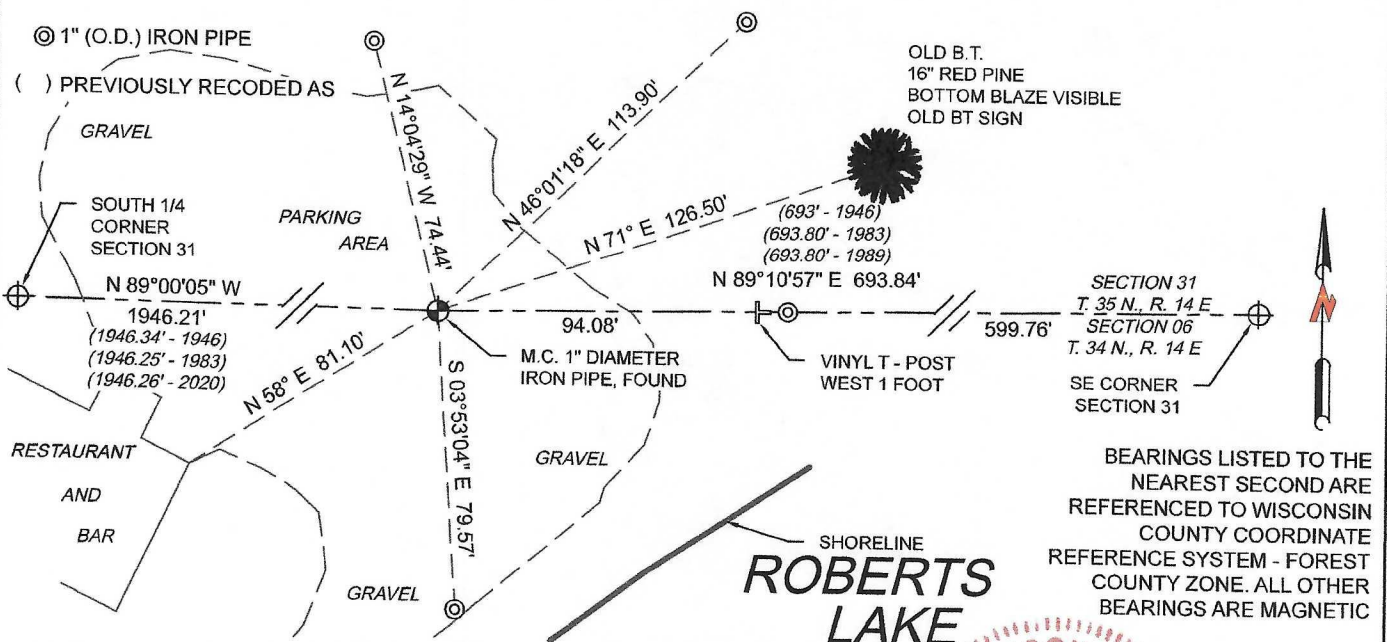
June 22, 2020 - Surveyor 2671 - Timothy J. Rusch - Indicates a "Found 1" Iron Pipe" at this location on Certified Survey Map, Document No. 230956, Volume 10 of Certified Surveys on Page 28-28A.

A-E 7.08(3)(f) Whether the corner was restored through acceptance of an obliterated location or a found perpetuated location.

June 9, 2021 - I found a bent 1" diameter iron pipe, ±3" below the gravel. I located the pipe bend point. Pipe matches distances to the South 1/4 Corner and Southeast Corner of Section 31 from previous surveys as shown. I left the pipe in the condition it was found.

I accept this monument as a FOUND PERPETUATED LOCATION OF THE CORNER and established new witnesses as shown below.

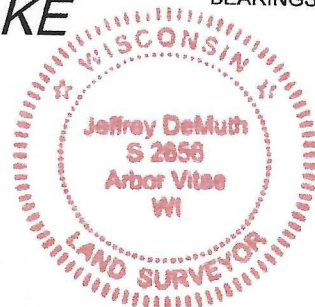
A-E 7.08(3)(c)(d)(e)(h) Plan view of corner with references to at least 4 witness monuments. If in disagreement with previously established corner, show the distances between the two corners and also indicate the ties to the disputed. The directions and distances to other public land survey corners used as evidence or used for determining the corner location.



A-E 7.08(3)(i) I, Jeffrey L. DeMuth, Professional Land Surveyor No. S-2656, hereby certify that the corner location on this record was determined by me or under my direction and control and that this U.S. Public Land Survey Monument Record is correct and complete to the best of my knowledge, and belief

SIGNATURE

February 2, 2022
DATE



43514310008