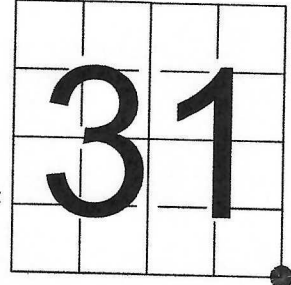


U S PUBLIC LAND SURVEY MONUMENT RECORD

NOTE: This form is intended and designed to fulfill all requirements of Wisconsin Administrative Code, Chapter A-E 7.08 U.S. Public Land Survey Monument Record (3) (a-i)

A-E 7.08(3)(a) Identity of corner
SOUTHEAST CORNER OF SECTION 31
TOWNSHIP 35 NORTH
RANGE 14 EAST OF THE 4TH PM
TOWN OF LAONA
COUNTY OF FOREST

WISCONSIN - FOREST COUNTY
N: 531,974.971 USft
E: 867,843.931 USft
Datum: NAD83 (2011)
GNSS Method RTN - Direct
GNSS Control WISCORS VRS



The coordinate value shown is the average of two or more GPS observations at a markedly different time.

A-E 7.08(3)(b) Description of any record evidence, monument evidence, occupational evidence, testimonial evidence, or any other material evidence.

Original Surveyor: Alfred Millard

Date of Original Survey Commenced: June 30 1857
Completed: No Date Found, 1857

Original Accessories:

Sugar	14	N 43° E	26 Links
Yellow Birch	11	N 20° W	22 Links
Sugar	14	S 32° W	9 Links
Sugar	14	S 17° E	70 Links

See Previous Monument Record:
Index No. 84 (Z 5)
Document No. 85683
Index No. A 5
Document No. 139177

July - August 1946 - Hugh B. Crawford, Assistant Cadastral Engineer - U.S. Department of the Interior - B.L.M.

Dependant Resurvey and Extension Survey, Section 6, T. 34 N., R. 14 E., 4th Principal Meridian

"Set a concrete monument, 3 ft. long, 5 ins. diam., 34 ins. in the ground, with an iron post, 3 ft. long, 1 in. diam., embedded in center, with brass cap mkd." (Cap marking shown below).

November 30, 1961 - Surveyor 670 - George V. Kapitz found a monument with a brass cap marked to identify the corner

Prepared Certified Land Corner Restoration - Index No. 84 (Z 5) - Document Number 85683.

May 1969 - Surveyor 0309 - L. Ernest George, references this corner on map of "ROBERTS LAKE"

July 23, 1969 - Surveyor 0309 - L. Ernest George, references this corner on Certified Survey Map, Document No. 96726, Volume I of Certified Surveys on Page 357.

1983 - Surveyor 1651 - Alan D. Harrison - Indicates a "GLO Brass Capped Concrete Monument" at this location on Certified Survey Map, Document No. 127413, Volume 3 of Certified Surveys on Page 159 (recorded February 5, 1985) & on Certified Survey Map, Document No. 128647, Volume 3 of Certified Surveys on Page 174 (recorded August 14, 1985).

March 10, 1989 - Surveyor 887 - Thomas R. Arnett - Indicates a "Forest Service Monument" at this location on Certified Survey Map, Document No. 137056, Volume 4 of Certified Surveys on Page 61

September 4, 1989 - Surveyor 973 - Wayne G. Dobratz - found a Brass Cap in Concrete, and one remaining accessory, Balsam 6" N.33°W. 12.50 feet (Kapitz B.T.) and prepared U.S. Public Land Survey Monument Record - Index No. A 5 - Document

Number 139177. Established reference monuments:

Power Pole S.70°E., 63.60 feet (Gone)
NE corner of Garage, South 130.10 feet (Garage is still there, DeMuth did not verify distance or direction)

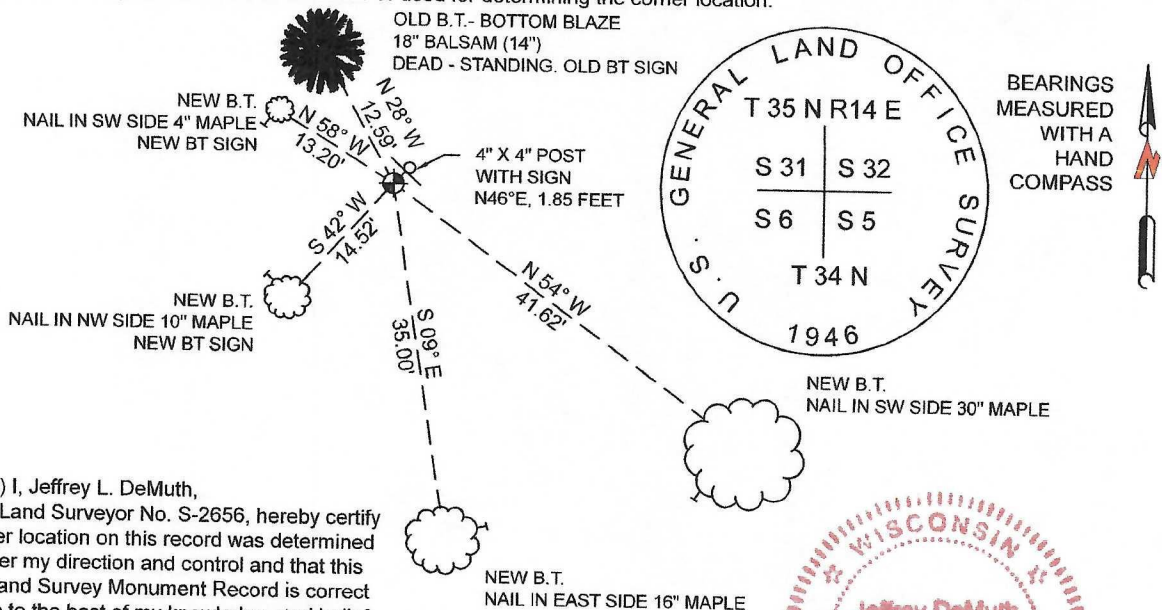
NW Corner of Residence, S.22°W. 11.42 feet (Residence is still there, DeMuth did not verify distance or direction)
4 X 4 Wood Post, N.46°E. 1.85 feet

A-E 7.08(3)(f) Whether the corner was restored through acceptance of an obliterated location or a found perpetuated location.

June 9, 2021 - I found a 6" diameter concrete monument with a 2 1/2" diameter brass cap stamped to identify the corner flush with the ground, and one remaining Hugh Crawford bearing tree in the condition shown below.

I accept this monument as a FOUND PERPETUATED LOCATION OF THE CORNER and established new witnesses as shown below.

A-E 7.08(3)(c)(d)(e)(h) Plan view of corner with references to at least 4 witness monuments. If in disagreement with previously established corner, show the distances between the two corners and also indicate the ties to the disputed. The directions and distances to other public land survey corners used as evidence or used for determining the corner location.

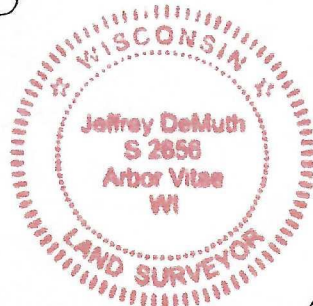


A-E 7.08(3)(i) I, Jeffrey L. DeMuth, Professional Land Surveyor No. S-2656, hereby certify that the corner location on this record was determined by me or under my direction and control and that this U.S. Public Land Survey Monument Record is correct and complete to the best of my knowledge, and belief

SIGNATURE

February 2, 2022

DATE

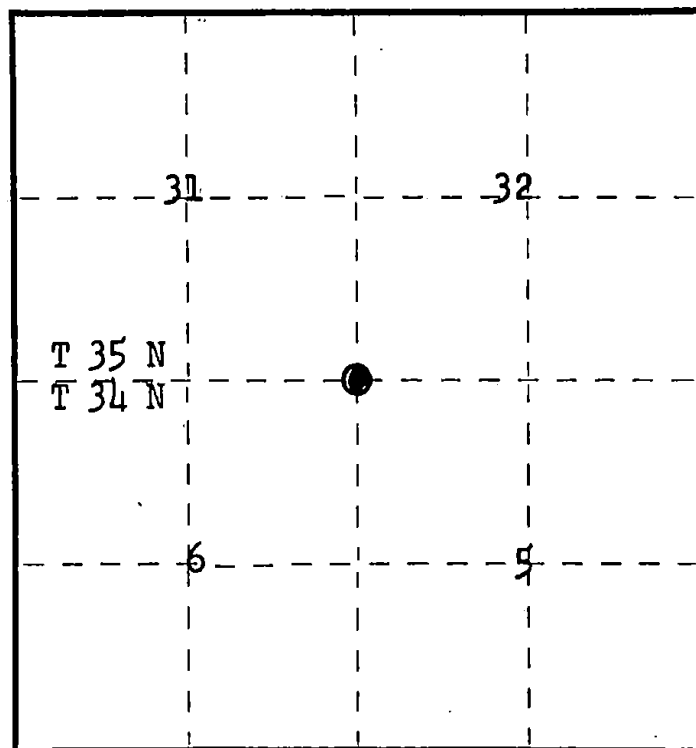


43514310000

State of Wisconsin }
County of Forest } ss.

I, George V. Kapitz, do hereby certify that on the 30th day of November, 1961, I found evidence of the section corner of 5, 6, 31, 32 Township 34 & 35 North, Range 14 E, Fourth Principal Meridian, as described hereon; and that from this evidence I established ~~new monument and~~ accessories as described hereon to perpetuate the ~~original~~ location of this corner.

Resident witnesses:



○ = Corner monument ~~located~~

CERTIFIED LAND CORNER RESTORATION

Index No.

84

7
5
SEE ALSO A-S-734-14

History of original corner establishment: Surveyed by Alfred Millard, in 1857
Dependent Resurvey of Section 6, T34N, R14E by Hugh B. Crawford in 1946
Set concrete monument, 3 ft. long, 5 ins. diam., 34 ins. in the ground, With an Iron Post 3 ft. long, 1 in. diam., embedded in center with Brass Cap marked:

T36N R14E
S31 S32
S6 S5
T34N
1946

from which the following Bearing tree

Maple 8", N20 $\frac{1}{4}$ ° E, 76 lks.
Birch 9", S38° E, 42 lks.
Maple 12", S62°W, 35 lks.
Maple 8", N56° W, 65 $\frac{1}{2}$ lks.

Description of corner evidence found:

1. Monument with Brass Cap mkd. as described above
2. Birch 10", S38°E, 27.72' scribe visible
3. Maple 17", S62°W, 23.10' scribe visible
4. Maple 14", N56°W, 43.23' scribe visible
5. Maple, N20 $\frac{1}{4}$ °W, Would fall in shoulder of Highway

Description of ~~monument~~ and accessories I established to perpetuate the ~~original~~ location of this corner.

1. N.E. Corner of cabin bears S23 $\frac{1}{2}$ °W, 17.70 ft. (27 lks.)
2. Blazed and scribed Balsam 6", N33°W, 12.50 ft. (19 lks.)
3. Set 4x4 treated post, top painted red, 2 ft. NE of Monument

Dated at Crandon, Wis., this 24th day of January, 1962.

Signature *George V. Kapitz* Title Land Surveyor Registration No. S-670
(County Surveyor, Registered Land Surveyor, or other duly authorized official)

Office of Register of Deeds, County of Forest, I hereby certify that the within instrument was filed in this office for record on the 24th day of January, 1962 at 9 o'clock A. M.

Inna Peterson
(Register of Deeds)

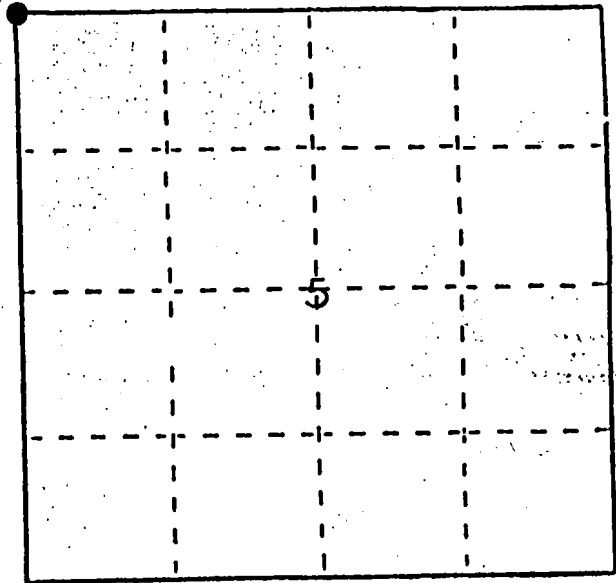
DOCUMENT NO. 85683

By Deputy

43514310000

This record shall show the location of the corner and shall include all of the following nine elements (a through i).

- CORNER TO SECTIONS - 5,6,31,32 -TWP!S.
34 & 35 R.14 E. IN FOREST COUNTY



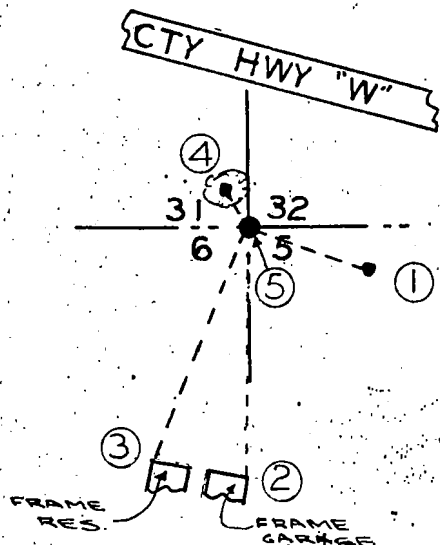
- 1857 - ORIGINAL SURVEY BY MILLARD
1946 - RESURVEY OF SECTION 6 BY CRAWFORD, SET CONCRETE MONUMENT, 3 FT. LONG, 5" DIA., 34" IN GROUND WITH AN IRON POST 3 FT. LONG 1" IN DIA., EMBEDDED IN CENTER WITH BRASS CAP MARKED TO IDENTIFY CORNER, B.T.s - MAPLE 8" N.20 $\frac{1}{4}$ " E. 76 lks, BIRCH 9" S.38° E. 42 lks, MAPLE 12" S.62° W. 35 lks, MAPLE 8" N.56° W. 65 $\frac{1}{2}$ lks.
1962 - RESTORATION BY KAPITZ R.L.S. # S-670, FOUND CORNER AS MARKED ABOVE, FOUND THESE B.T.s- BIRCH 10"S.38° E. 27.72 FT., MAPLE 17" S.62° W. 23.10FT., MAPLE 14" N.56° W. 43.23FT.. ESTABLISHED NEW ACCESSORIES AS FOLLOWS; NE CORNER OF CABIN - S.23 $\frac{1}{2}$ " W. 17.70FT., BALSAM 6" N.33° W. 12.50FT., 4X4 WOOD POST 2FT. NE OF CORNER
1989 - RESTORATION BY DOBBRATZ R.L.S. # S-973, FOUND MONUMENT AS DESCRIBED ABOVE, ONE ACCESSORY REMAINING. BALSAM 6" N.33° W. 12.50FT.

- (d) Show a plan view drawing depicting the relevant monuments and reference ties which is sufficient in detail to enable accurate relocation of the corner monument if the corner monument is disturbed. Indicate north.

1 - POWER POLE S.70° E. 63.60FT.
2 - NE CORNER OF GARAGE SOUTH 130.10FT.
3 - NW CORNER OF RESIDENCE, S.22° W. 131.42FT.
4 - BALSAM 14" N.28° W. 12.59FT. (EXISTING)
5 - SECTION CORNER, BRASS CAP IN CONCRETE (EXISTING)
4 X 4 WOOD POST, N.46° E. 1.85FT.

Received for record this 26 day
of February, 1990 at
0:10 o'clock PM and recorded
in Vol. CORNER RESTORATION

Register of Deeds



N

A-5

43514310000

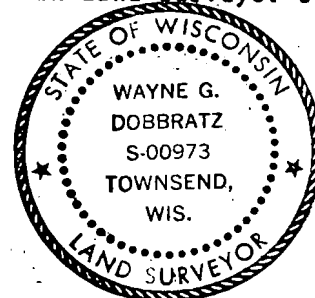
(e) Describe any material discrepancy between the location of the corner as restored or reestablished and the location of that corner as previously restored or reestablished by distance and direction. Show the discrepancy on the plan view drawing under (d), above. Show the distances between the corner as previously restored or reestablished and (1) the corner as restored or reestablished, and (2) to at least 2 of the witness monuments shown on the drawing in (d), above.

(f) Was the corner restored through acceptance of (1) an obliterated evidence location, or, (2) a found perpetuated location?

(2) FOUND PERPETUATED LOCATION

(g&h) Was the corner reestablished through lost corner proportionate methods? If so, show the method, including the directions and distances to other public land survey corners used as evidence or used for proportioning in determining the corner location?

Affix Land Surveyor Seal



(i) I, WAYNE G. DOBBRATZ
(type or print name) certify that the corner location shown on this record was determined by me or under my direction and control and that this U.S. Public Land Survey Monument Record is correct and complete to the best of my knowledge and belief.

Signature

Date

CERTIFICATE READY FOR FILING:

Dale S. Haeger
District Ranger