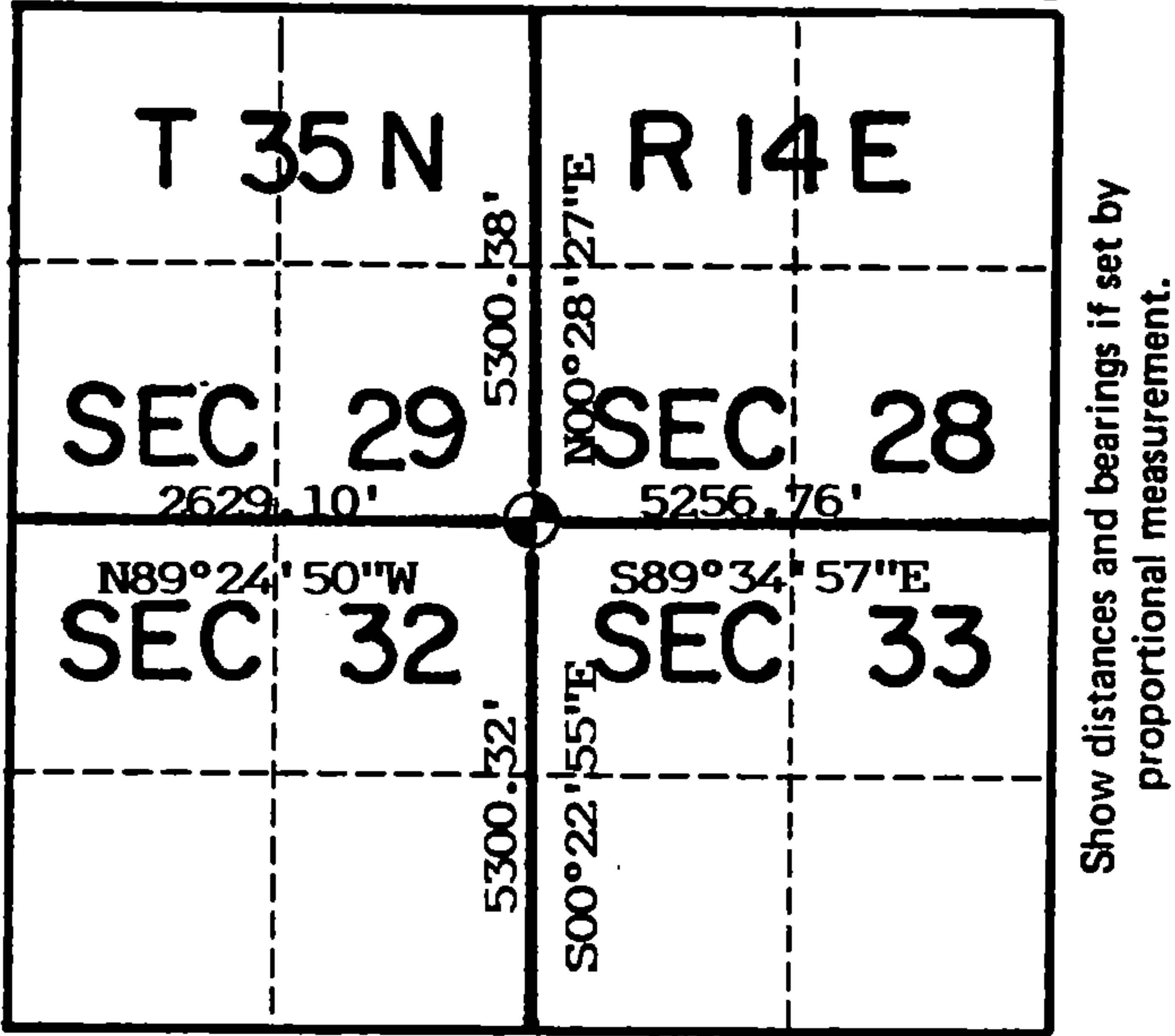


U. S. PUBLIC LAND SURVEY MONUMENT RECORD

INDEX NO. V-9

Section Corner to Section 28 29 T 35 N, R 14 E
(Section/Quarter) 32 33



Show distances and bearings if set by proportional measurement.

History of original corner establishment, record evidence, monument evidence, occupational evidence, testimonial evidence or any other material evidence, and what you found and how the monument was set.

In 1859 James McBride, contract surveyor, set this corner at 80 chains and marked the following bearing trees:

Birch	24"	N71W	55 links
Sugar	10"	N43E	20 "
Sugar	12"	S18E	26 "
Sugar	10"	S48W	50 "

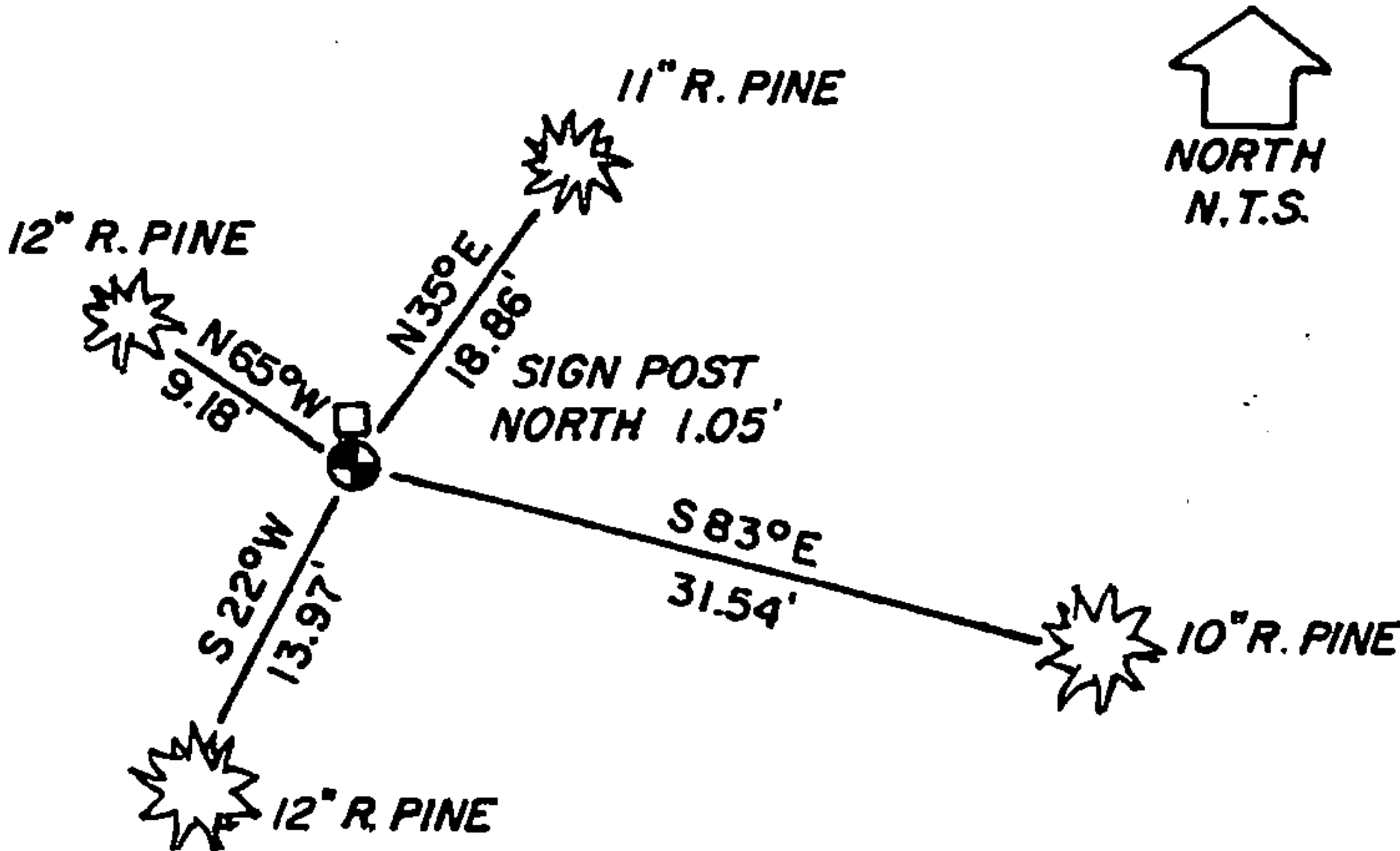
This corner position fell in a Red Pine plantation just north of a logging road. Evidence for this corner had been destroyed and nothing was found in relation to bearing trees, post evidence or occupation other than an east-west line for the Pine plantation. I therefore determined the corner lost and set it at double proportionate measure.

In the plan view drawing below, provide reference ties to at least 4 witness monuments, or, if the location is within a municipality, to at least 2 witness monuments. (Witness monuments shall be made of concrete, natural stone, iron or other equally durable material, except wood other than bearing trees.) Also, show any material discrepancies between the corner restored or re-established and the location of any other previous corner location or occupation.

○ = Corner monument restored.



Set a 2"x 36" aluminum post with cap stamped for corner. Ties are to aluminum nails driven into the tree centers which trees were blazed and scribed. Bearings are magnetic.



I, Kim H Pritzlaff, RLS No. 1259
(Type or print name) certify that the corner location shown on this record was determined by me or under my direction and control and that this U.S. Public Land Survey Monument Record is correct and complete to the best of my knowledge and belief.

Kim Pritzlaff
Signature

1993
Date

Certificate Ready For Filing:

Ralph [Signature]
Acting District Ranger

149072

43514290000

INDEX NO. _____

MAINTENANCE RECORD

Condition of Monument _____

Condition of Ties _____

New Ties, if any: _____

Date

Signature

Condition of Monument _____

Condition of Ties _____

New Ties, if any: _____

Date

Signature

Condition of Monument _____

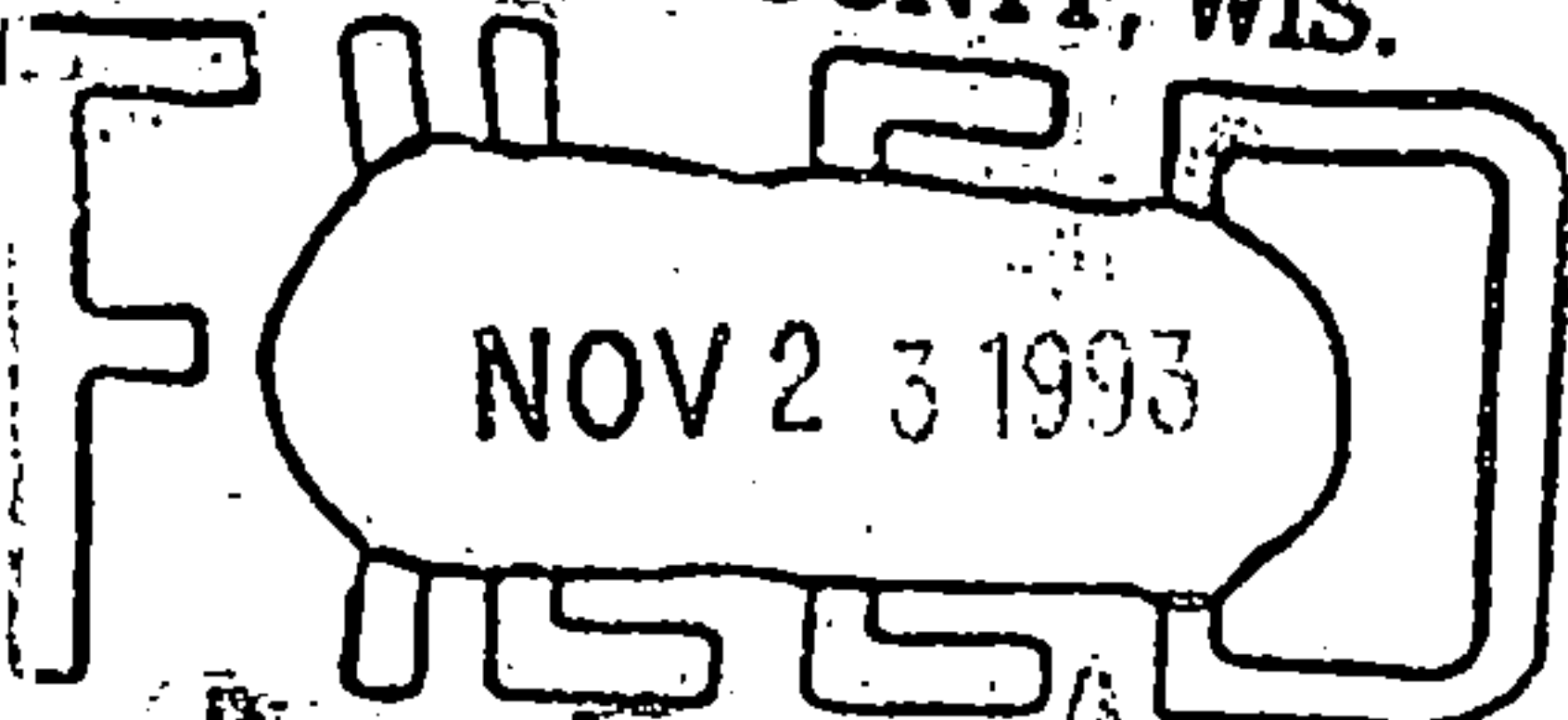
Condition of Ties _____

New Ties, if any: _____

Date

Signature

REGISTER'S OFFICE
FOREST COUNTY, WIS.



At 9 O'clock A.M.
Paul A. Schenck
Register of Deeds