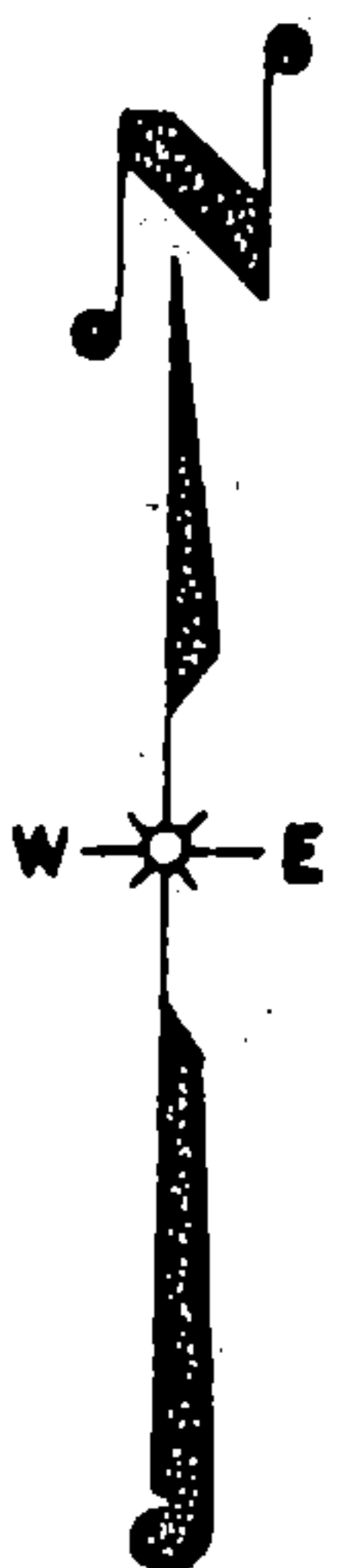
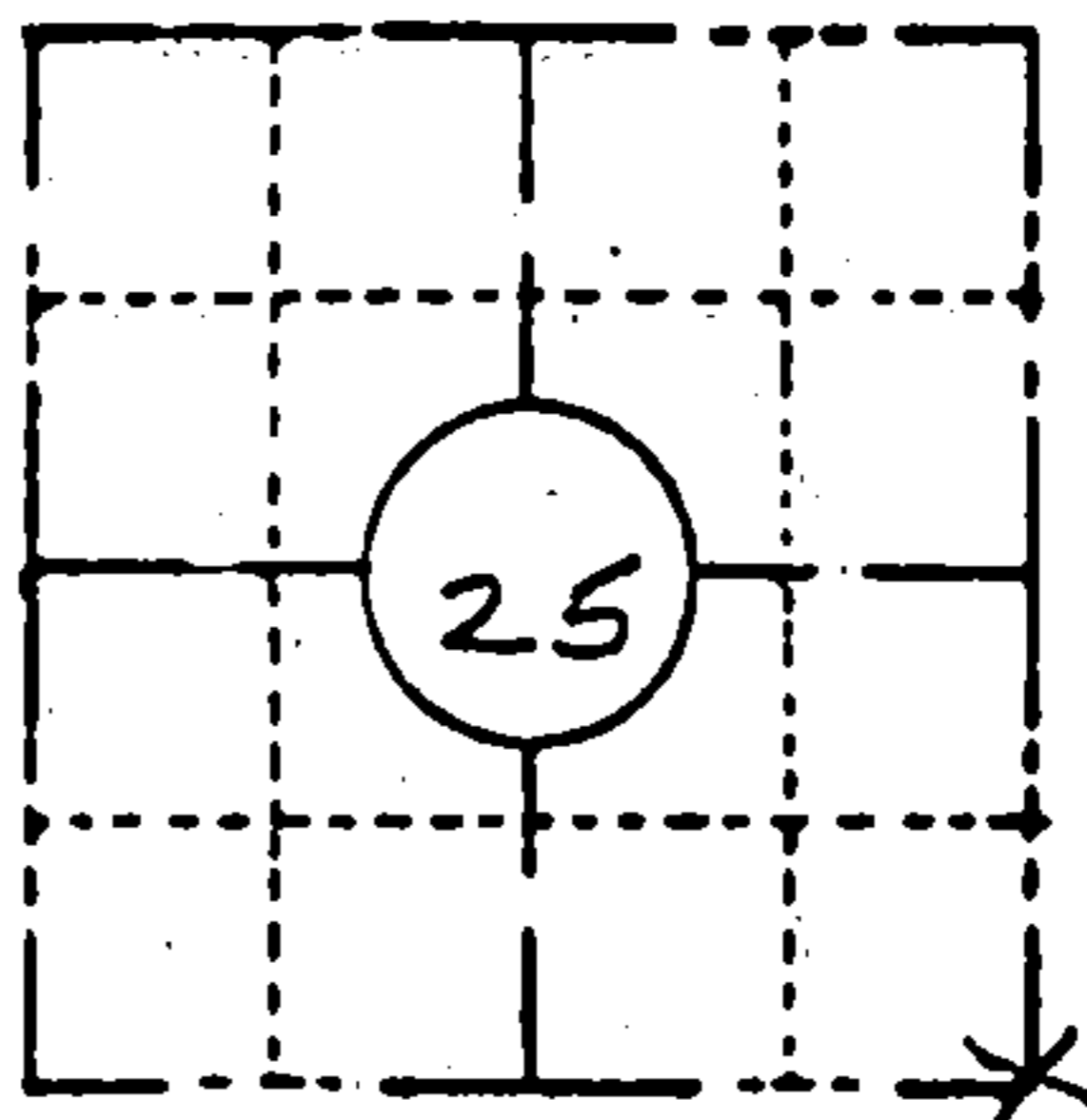


**ORIGINAL ON FILE IN CO CLERK'S OFFICE
COPY HERE FOR REFERENCE**

FIELD SURVEY NOTES
PRESERVATION OF LANDMARKS
(Pursuant to Section 59.635(7) Wisconsin Statutes
E-D-707-69

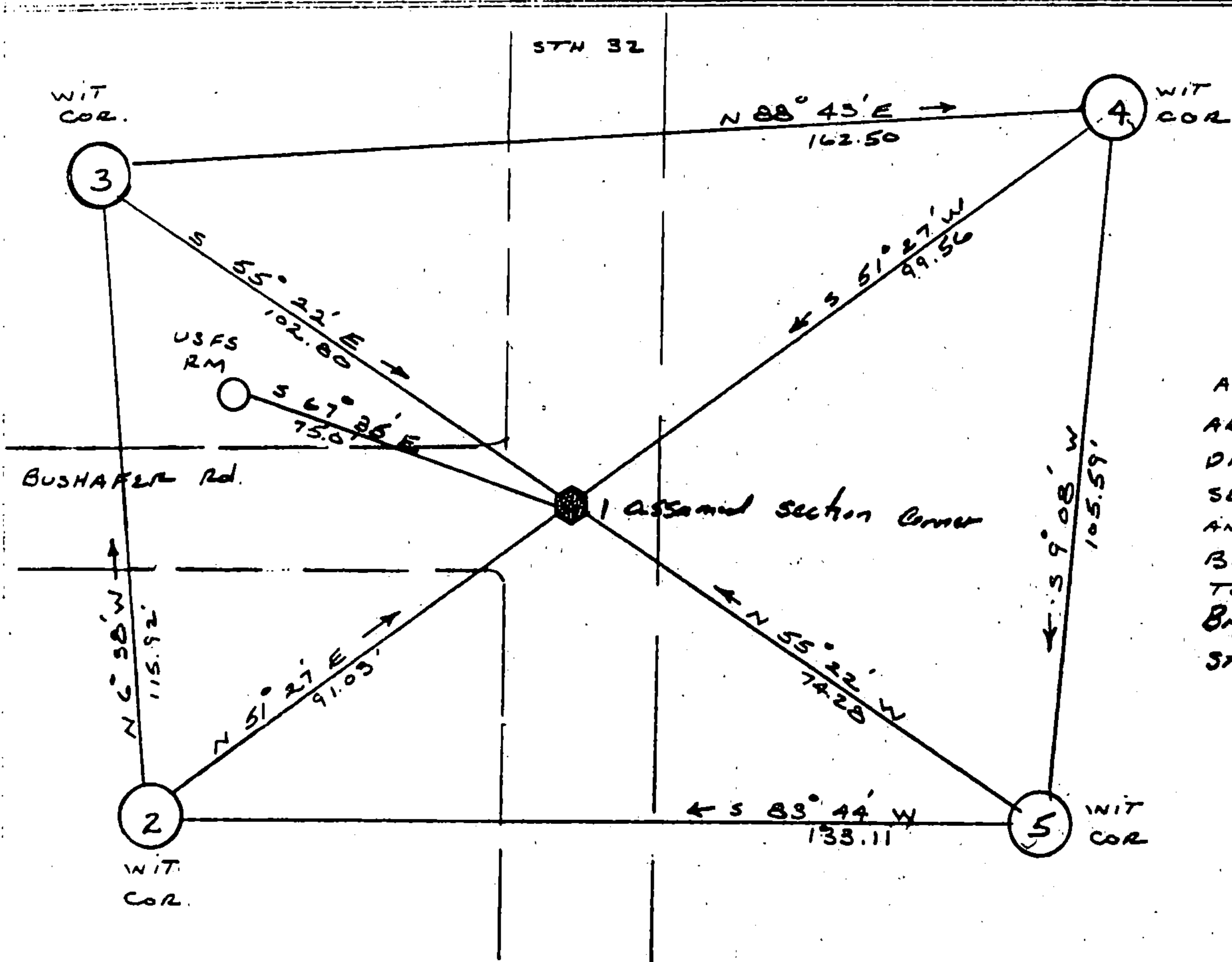
State of Wisconsin / Department of Transportation

COUNTY <i>FOREST</i>		
TOWN <i>LAONA, WABENO</i>		
HIGHWAY <i>STH 32</i>		
SECTION <i>25</i>	TOWNSHIP <i>T 35 N</i>	RANGE <i>R 14 E</i>
TYPE OF LANDMARK <i>5/8" IRON ROD AGREES WITH USFS REFERENCE MONUMENT</i>		



LOCATION SKETCH
(Location of landmark indicated by "x")

This space for copy of field notes or ties to the above described landmarks



ALL WITNESS CORNERS
ARE D.O.T. BERNOTEN
DRIVEABLE MONUMENT.
SET FLUSH WITH GROUND
AND STAMPED WITH
BEARING & DISTANCE
TO CORNER
Bigs are returned to
STH 32 @

FILED UNDER PROJECT <i>9131-03-70</i>			COUNTY CLERK'S OFFICE COUNTY OF <i>Forest</i> WISCONSIN } 59	
DISTRICT OFFICE NUMBER <i>03-07</i>	CITY <i>RHINELANDER</i>	COUNTY <i>ONEIDA</i>	DATE RECEIVED FOR RECORD <i>7-10-85</i>	DATE COPY SENT TO COUNTY SURVEYOR <i>N/A</i>
LOCATED OR ESTABLISHED BY NAME <i>J.R. WALLIN</i>			SIGNATURE OF COUNTY CLERK <i>Dora C. James</i>	
TITLE <i>SURVEY CREW CHIEF</i> DATE <i>5-16-85</i> <i>Under the direct supervision of Michael Hess 502809</i>				