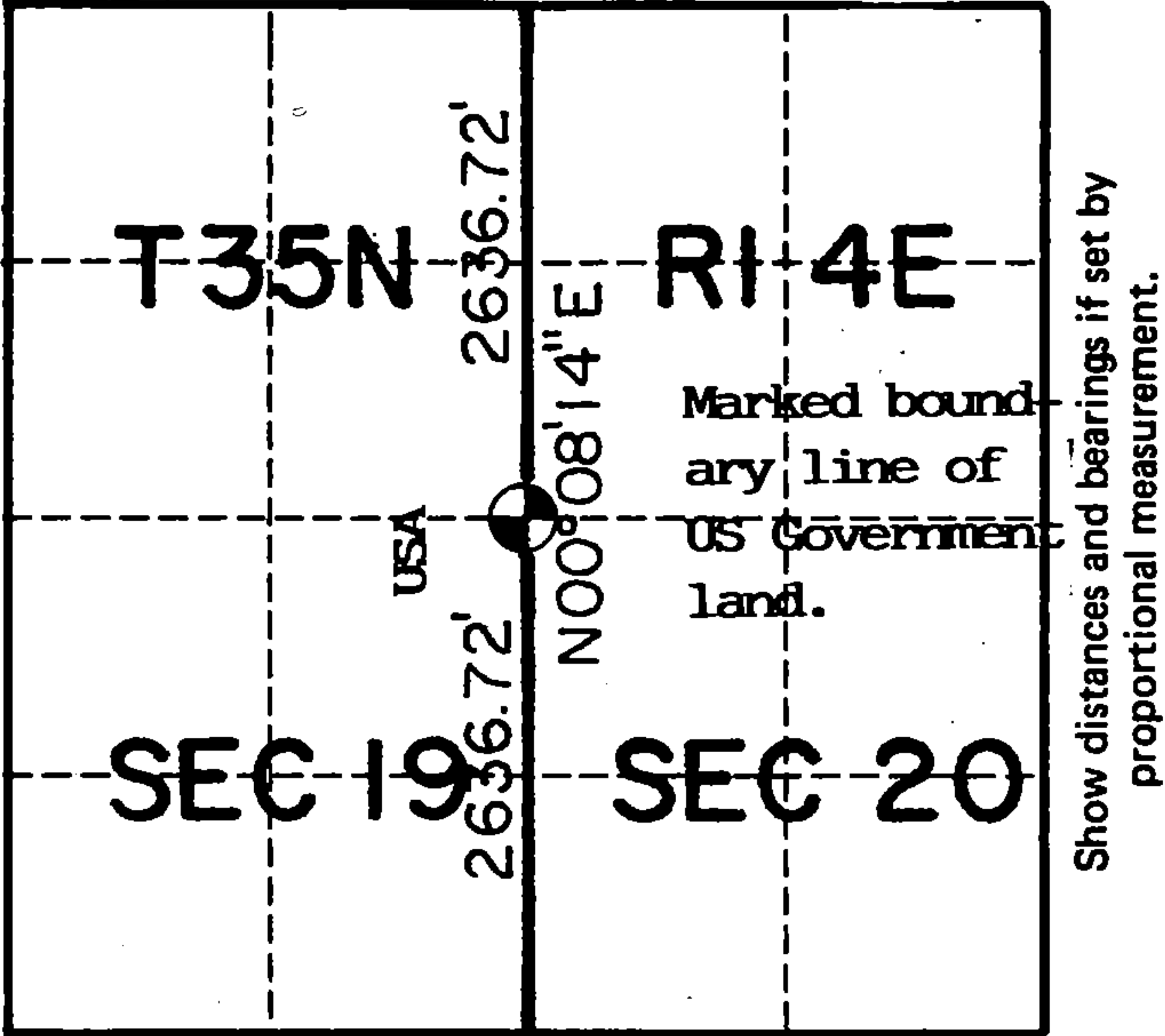


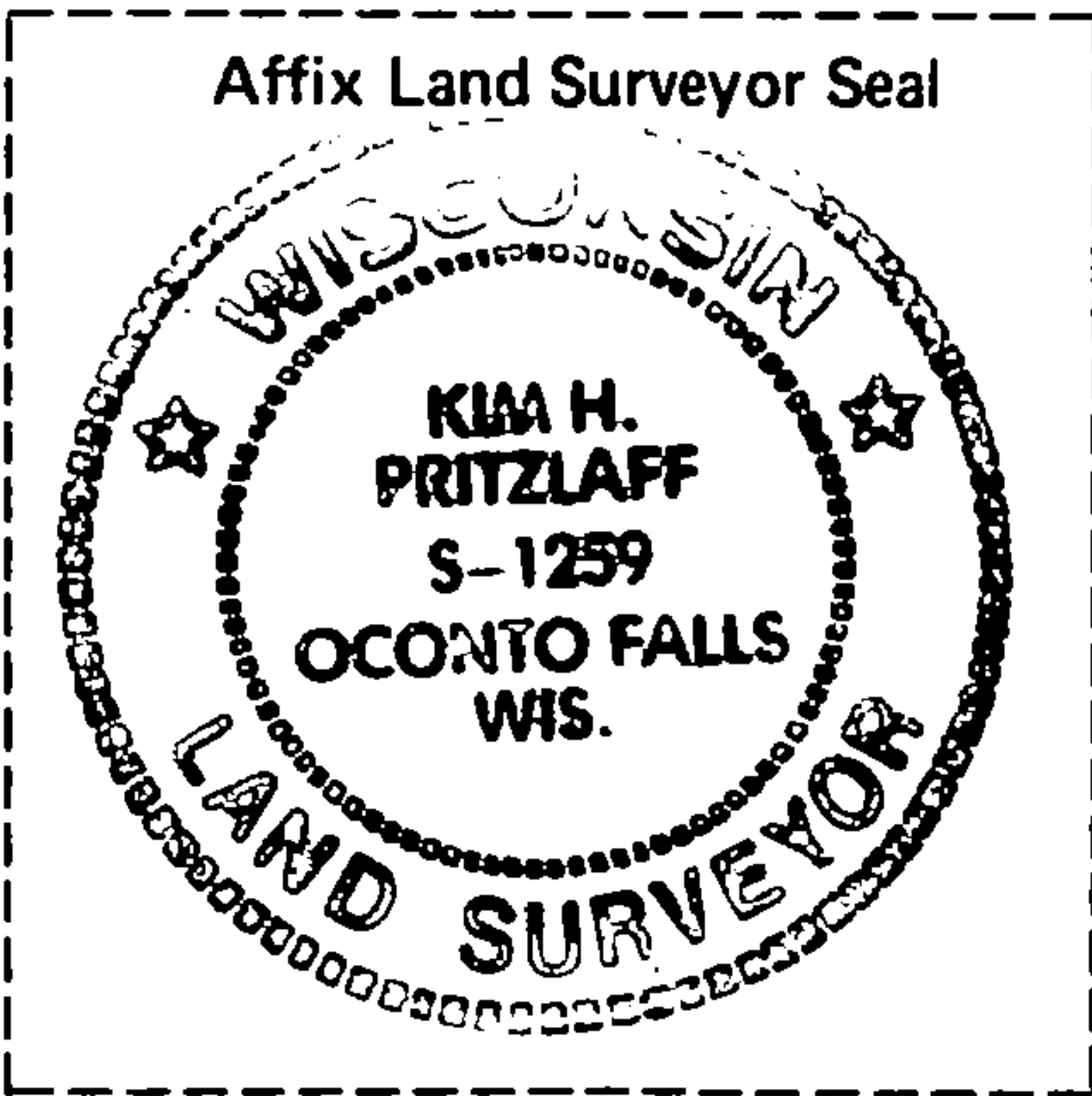
U. S. PUBLIC LAND SURVEY MONUMENT RECORD

INDEX NO. P-5

quarter Corner to Section 19-20 T35N, R14E  
(Section/Quarter)

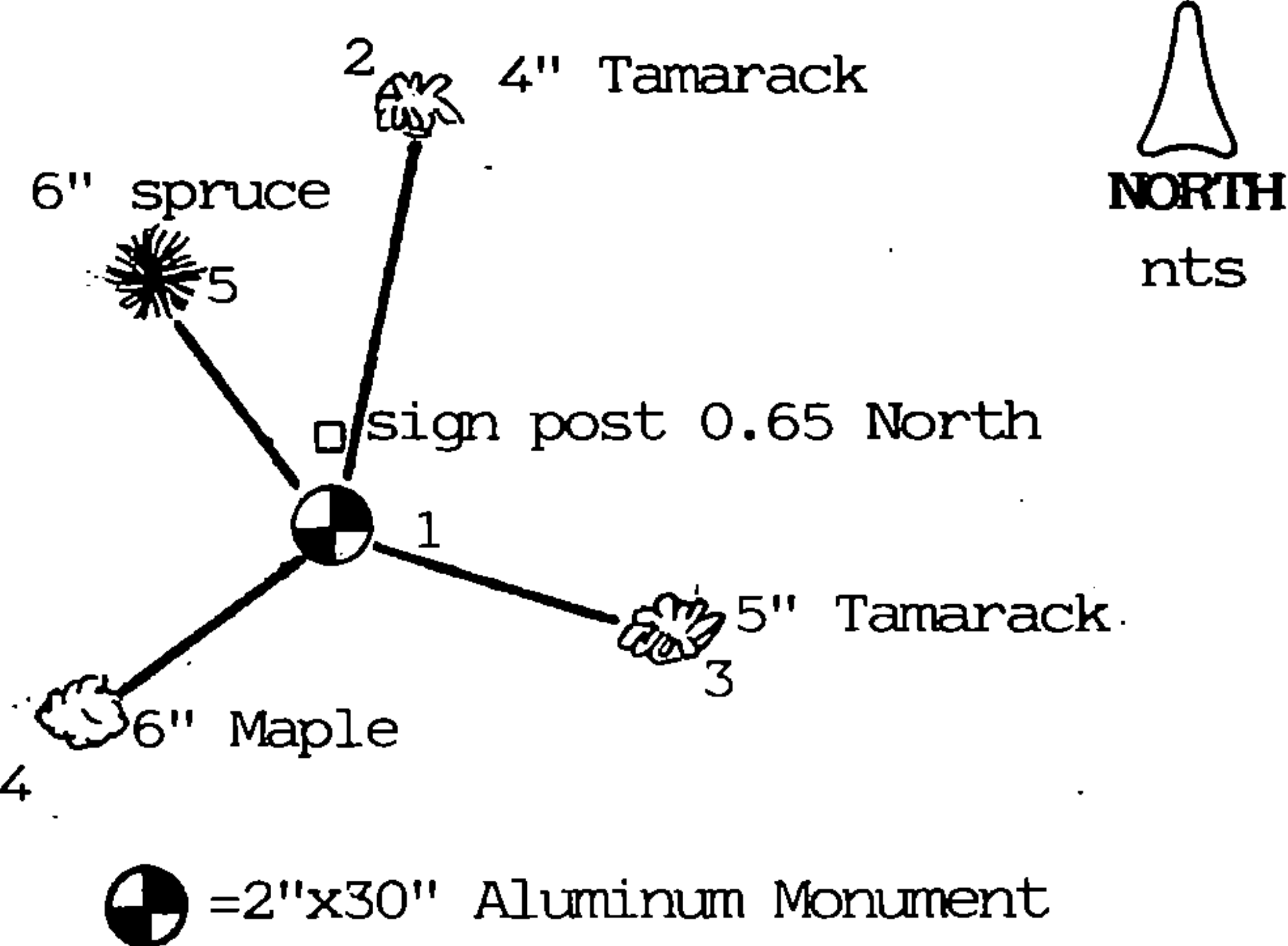


○ = Corner monument restored.



Set a 2"x 60" aluminum monument with cap stamped for corner. Ties are to aluminum nails driven into the tree centers which trees were blazed and scribed. Bearings are magnetic.

- 1-2 N08°E 87.18
- 1-3 S88°E 51.22
- 1-4 S49°W 97.71
- 1-5 N50°W 52.98



⊙ = 2"x30" Aluminum Monument

History of original corner establishment, record evidence, monument evidence, occupational evidence, testimonial evidence or any other material evidence, and what you found and how the monument was set.

In 1859 James McBride set a wood post at 40 chains and marked the following bearing trees:

- Tamarack 8" S48W 170 links
- Tamarack 6" N37E

At 38 chains he entered a tamarack swamp and set the corner at 40 chains.

I located the single proportionate position for this corner which fell on the west edge of a swamp and roughly 2 chains north of the beginning of the swamp. Tamarack stumps were searched for under the swamp mat but no combination was found to fit any corner post evidence. A few small tamarack trees were located for ties but not many trees were growing in this open swamp land. The corner was determined lost and set by single proportionate measure. This position fit a rough cut line to the south witnessed by vegetation change.

In the plan view drawing below, provide reference ties to at least 4 witness monuments, or, if the location is within a municipality, to at least 2 witness monuments. (Witness monuments shall be made of concrete, natural stone, iron or other equally durable material, except wood other than bearing trees.) Also, show any material discrepancies between the corner restored or re-established and the location of any other previous corner location or occupation.

I, Kim H Pritzlaff, RLS No. 1259  
(Type or print name) certify that the corner location shown on this record was determined by me or under my direction and control and that this U.S. Public Land Survey Monument Record is correct and complete to the best of my knowledge and belief.

*Kim H Pritzlaff*  
Signature

1995  
Date

Certificate Ready For Filing:

*Ralph Schell*  
Acting District Ranger

149078

43514192000

INDEX NO. \_\_\_\_\_

MAINTENANCE RECORD

Condition of Monument \_\_\_\_\_

Condition of Ties \_\_\_\_\_

New Ties, if any:

\_\_\_\_\_  
Date

\_\_\_\_\_  
Signature

Condition of Monument \_\_\_\_\_

Condition of Ties \_\_\_\_\_

New Ties, if any:

\_\_\_\_\_  
Date

\_\_\_\_\_  
Signature

Condition of Monument \_\_\_\_\_

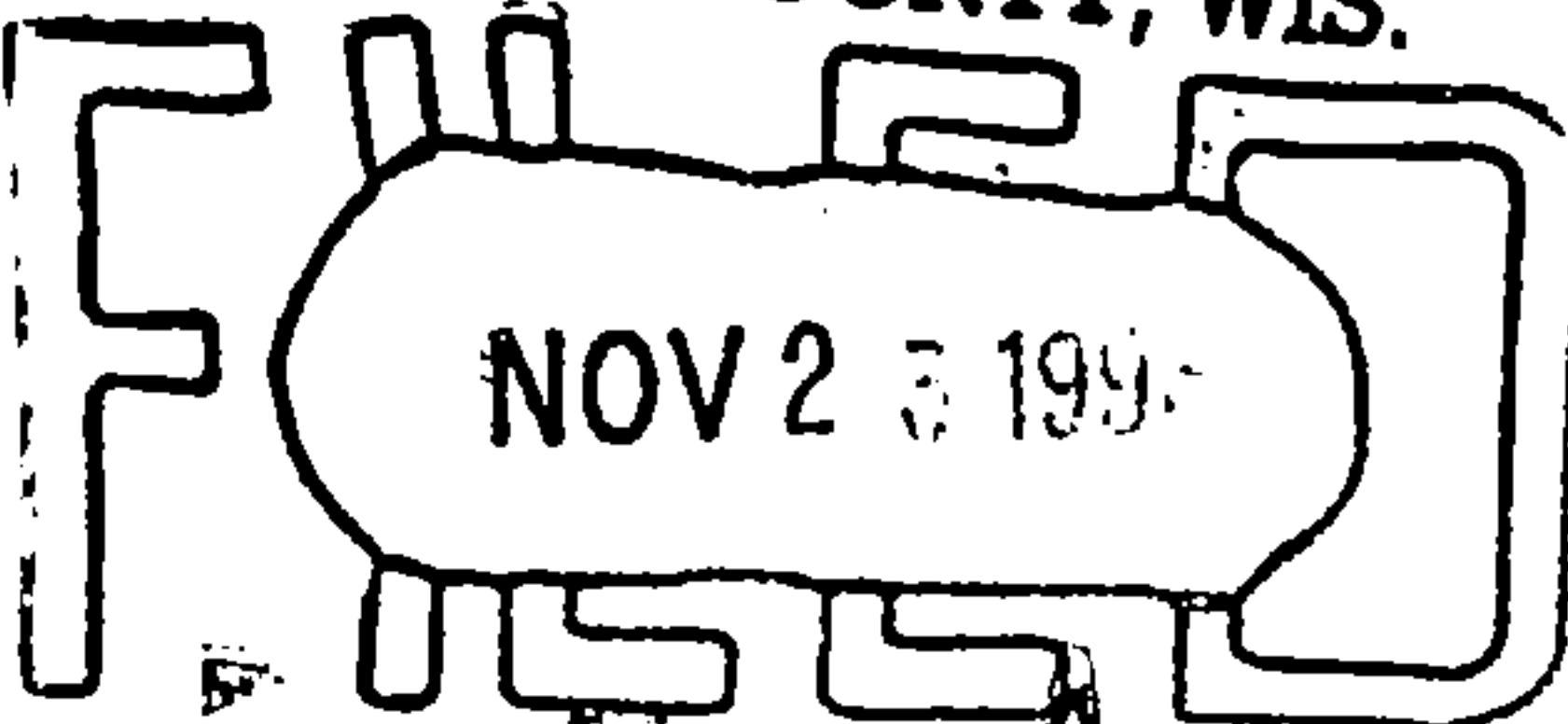
Condition of Ties \_\_\_\_\_

New Ties, if any:

\_\_\_\_\_  
Date

\_\_\_\_\_  
Signature

REGISTER'S OFFICE  
FOREST COUNTY, WIS.



*Paul A. Schenck*  
At 9 O'clock A.M.  
Register of Deeds