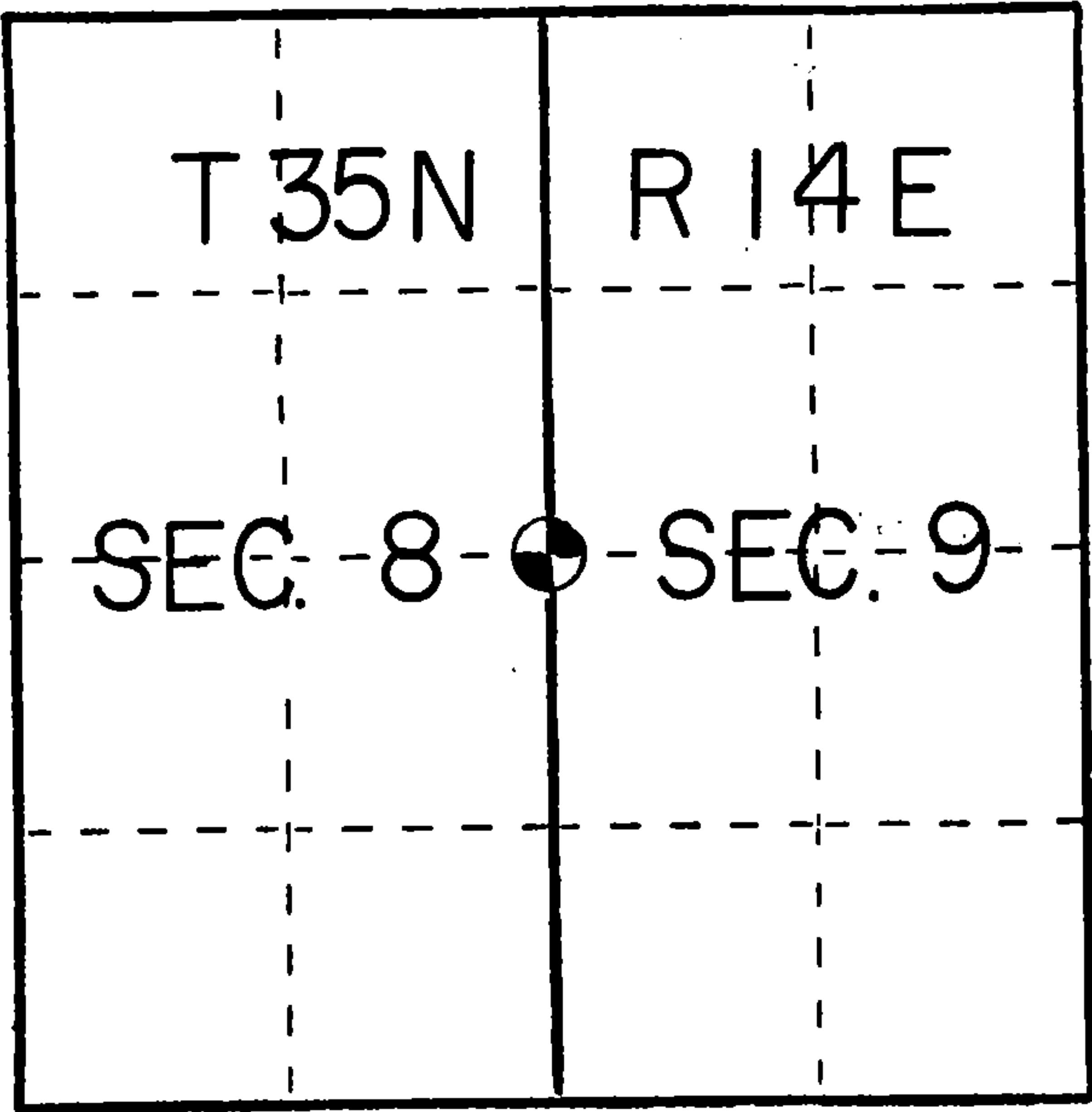


U. S. PUBLIC LAND SURVEY MONUMENT RECORD

INSTRUCTIONS: This record shall show the location of the corner and shall include all of the following nine elements (a through i).

- (a) Identify the corner by reference to the U.S. public land survey system.  
O = Corner monument restored.

Quarter corner to Sections 8-9, T35N, R14E, Forest County, Wisconsin



- (b) Describe any record evidence, monument evidence, occupational evidence, testimonial evidence or any other material evidence you considered, and whether the monument was found or placed.

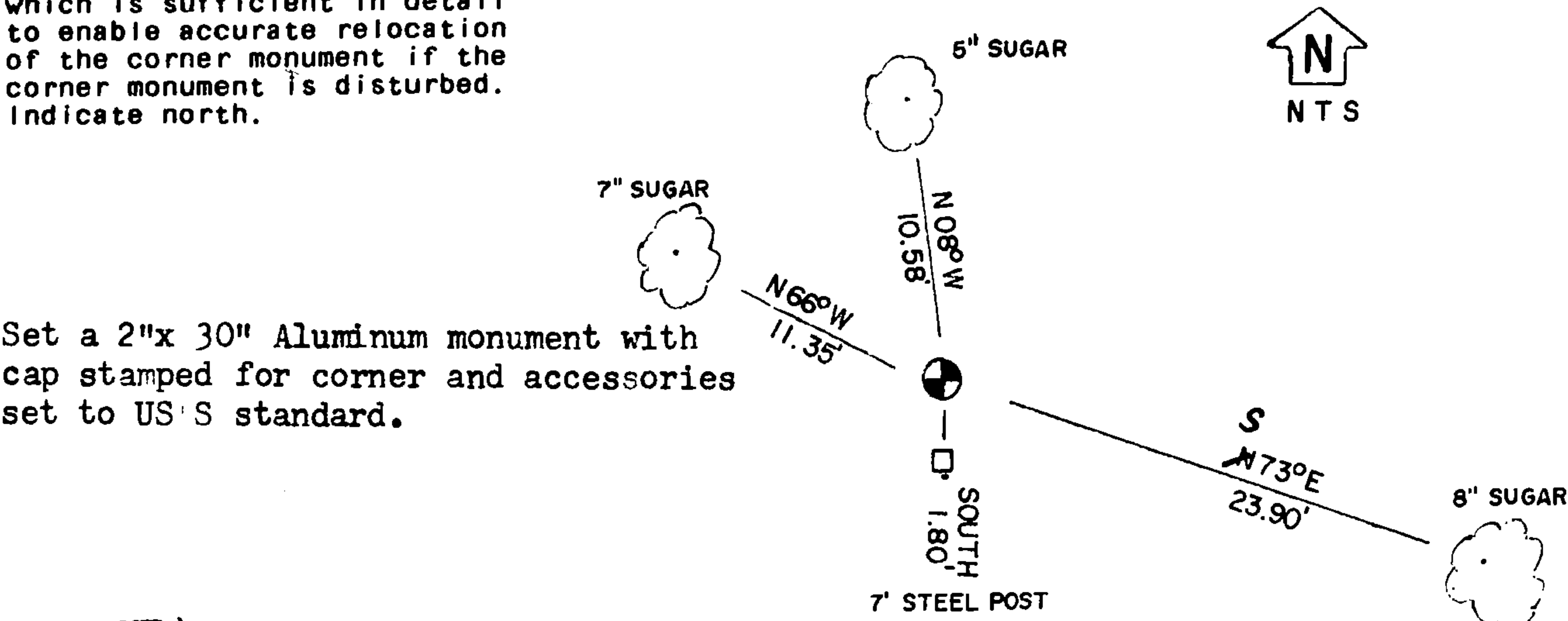
In 1859 J McBride set a wood post with:

Hemlock 12" N41E 10 links  
Hemlock 12" N48W 29 links

Found 4"x4" scribed post in rock pile with 1 1/4" iron pipe. Three blazed Elm trees x surrounded corner and an old blazed line ran from corner south to southwest corner of Section 9. I accepted the post and pipe. No bearing tree evidence was located.

- (c) In the plan view drawing below, provide reference ties to at least 4 witness monuments, or, if the location is within a municipality, to at least 2 witness monuments. (Witness monuments shall be made of concrete, natural stone, iron or other equally durable material.)  
Describe witness monuments.

- (d) Show a plan view drawing depicting the relevant monuments and reference ties which is sufficient in detail to enable accurate relocation of the corner monument if the corner monument is disturbed. Indicate north.



Set a 2"x 30" Aluminum monument with cap stamped for corner and accessories set to US S standard.

REGISTER'S OFFICE }  
Forest County, Wis. }

Received for record this 7th day  
of August A.D., 1985 at  
3:00 o'clock P.M. and recorded  
in Vol. CORNER RESTORATIONS  
page G-9

Paul Aschendrenner  
Register of Deeds

- (e) Describe any material discrepancy between the location of the corner as restored or reestablished and the location of that corner as previously restored or reestablished by distance and direction. Show the discrepancy on the plan view drawing under (d), above. Show the distances between the corner as previously restored or reestablished and (1) the corner as restored or reestablished, and (2) to at least 2 of the witness monuments shown on the drawing in (d), above.

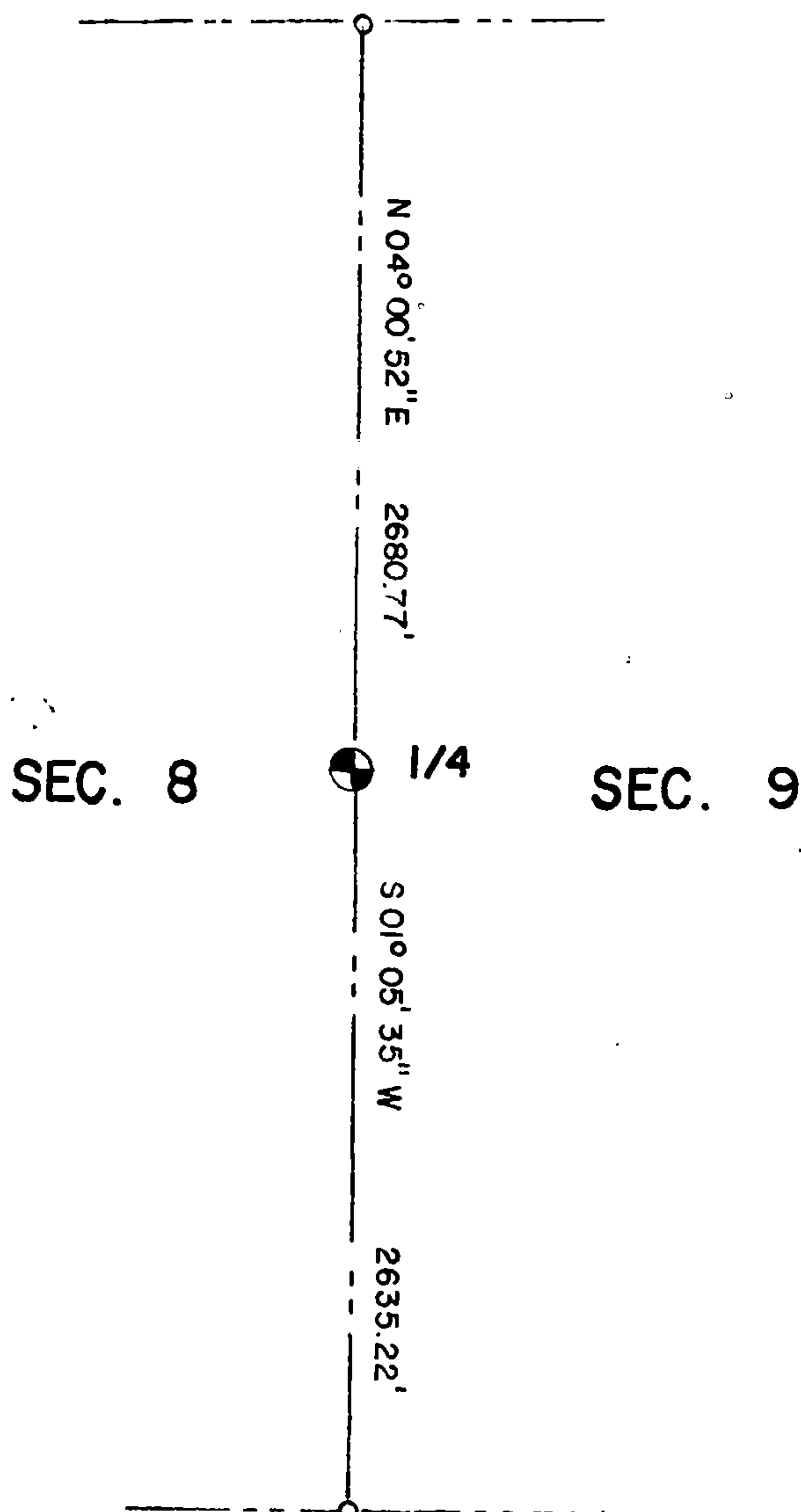
No discrepancy

- (f) Was the corner restored through acceptance of (1) an obliterated evidence location, or, (2) a found perpetuated location?

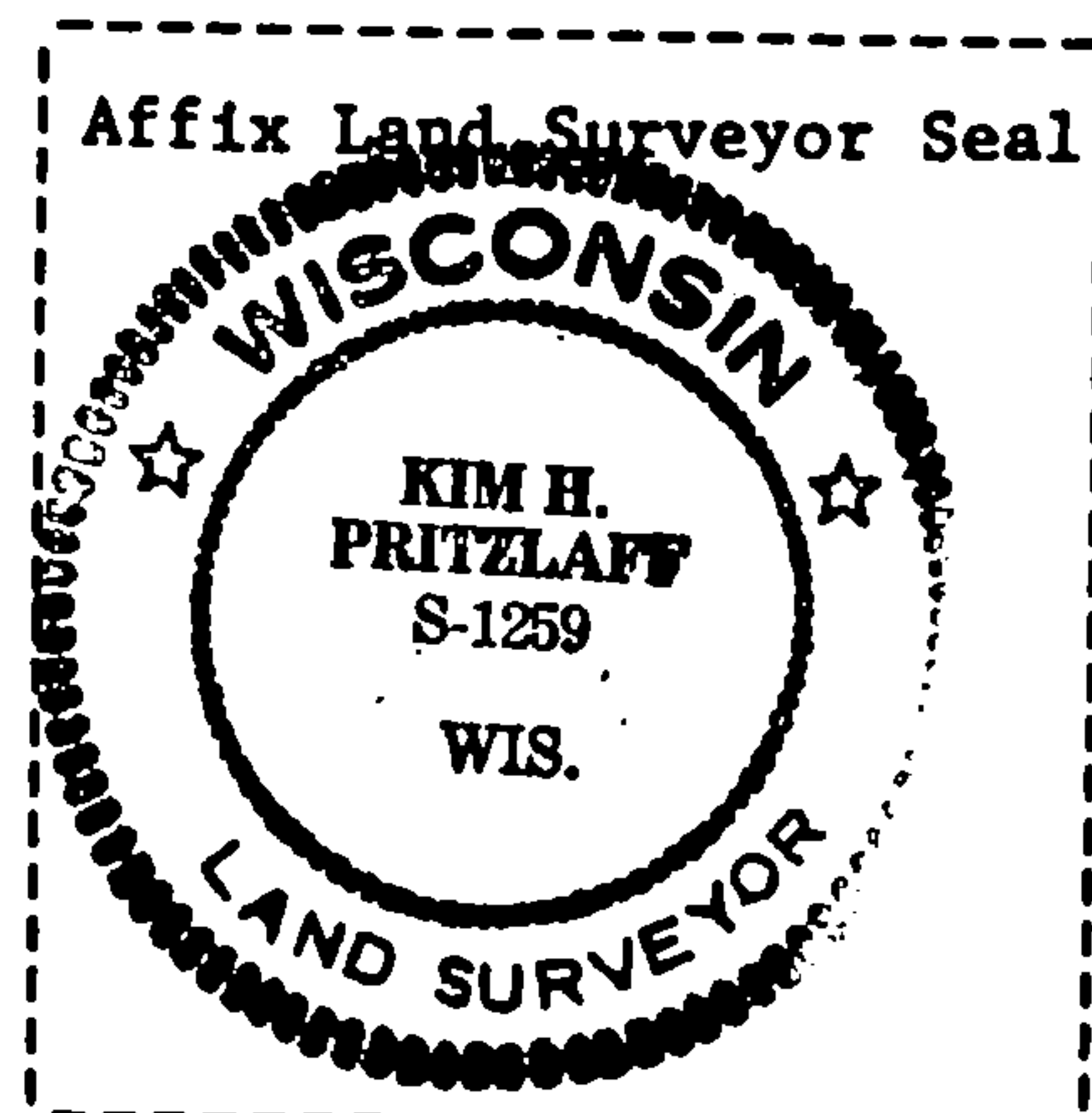
Found perpetuated location

- (g&h) Was the corner reestablished through lost corner proportionate methods? If so, show the method, including the directions and distances to other public land survey corners used as evidence or used for proportioning in determining the corner location?

No



Kim H Pritzlaaff



- (i) I, (type or print name) certify that the corner location shown on this record was determined by me or under my direction and control and that this U.S. Public Land Survey Monument Record is correct and complete to the best of my knowledge and belief.

Signature

Date

*Kim Pritzlaaff*

3-27-85