

Document Number

173805

REGISTER'S OFFICE
Forest County, Wis.

Received for record this 11th day
of December A.D., 2001 at
9:10 o'clock A.M. and recorded
in Vol. CR Corner Restoration
page C-17

Kay Swanson, Deputy
Register of Deeds

U.S. PUBLIC LAND SURVEY MONUMENT RECORD

(As Required by WI Adm. Code)

History of original corner establishment and subsequent restorations and descriptions of any record, monument, occupational, testimonial or other evidence considered:

1859 — James McBride, set original corner post and made the following B.T.'s:

Aspen, 8", N 26° W, 27 lks., 17.82 feet.

Aspen, 8", N 62° E, 16 lks., 10.56 feet.

2001 — I found no evidence of the original corner. I found a railroad spike in line with West lane of N-S Road & 3' S. CL of E.-W Road. Railroad spike has been used by local surveyors as the quarter corner for surveys in the area. I accepted the railroad spike as the best available evidence for the corner location.

Corner was: (Check All That Apply)

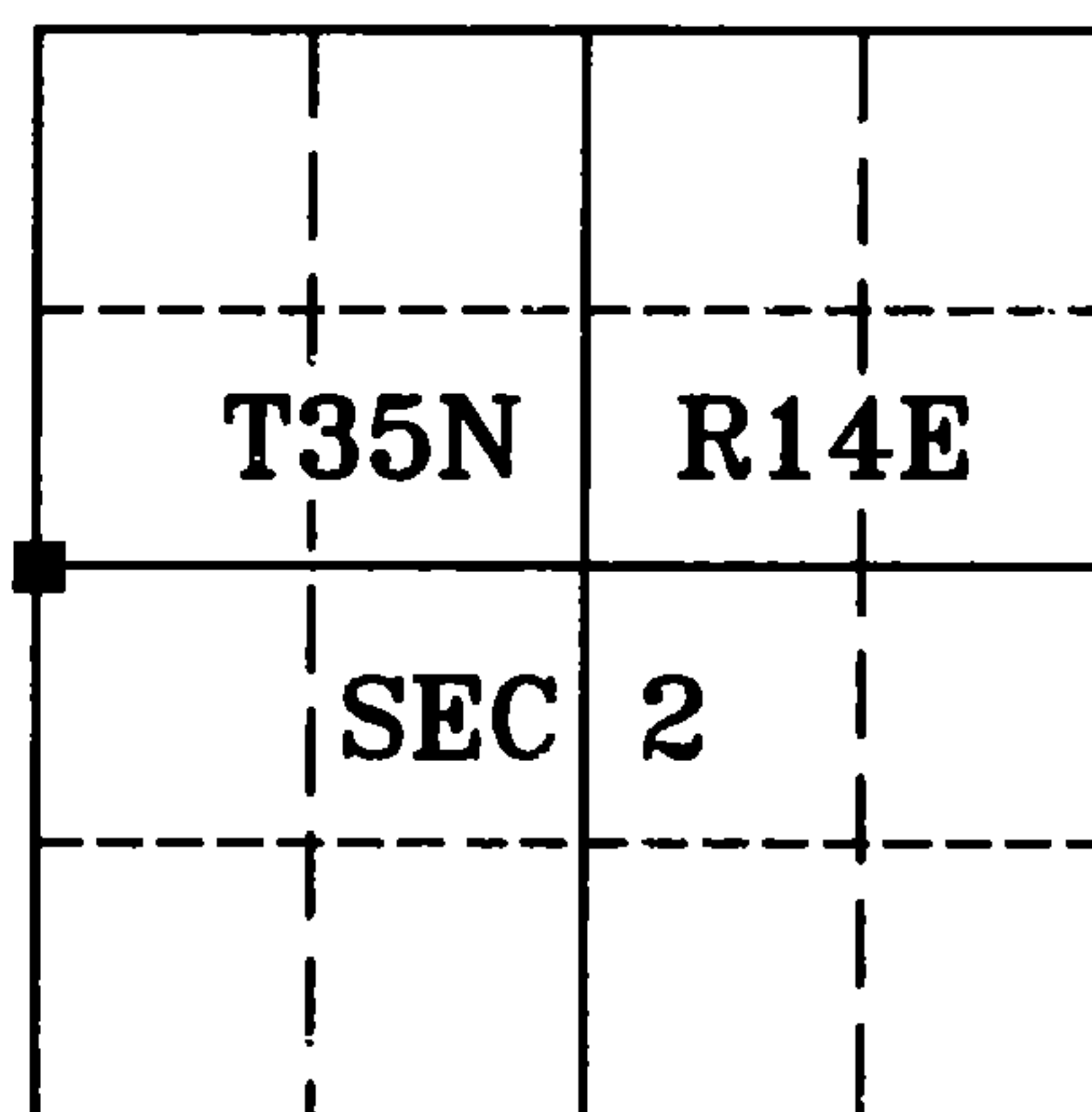
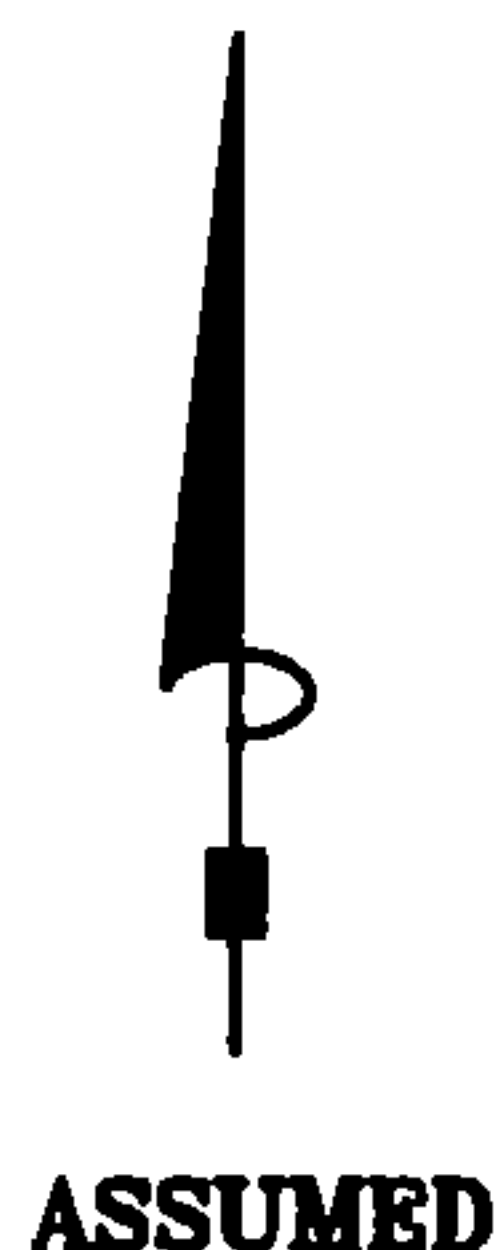
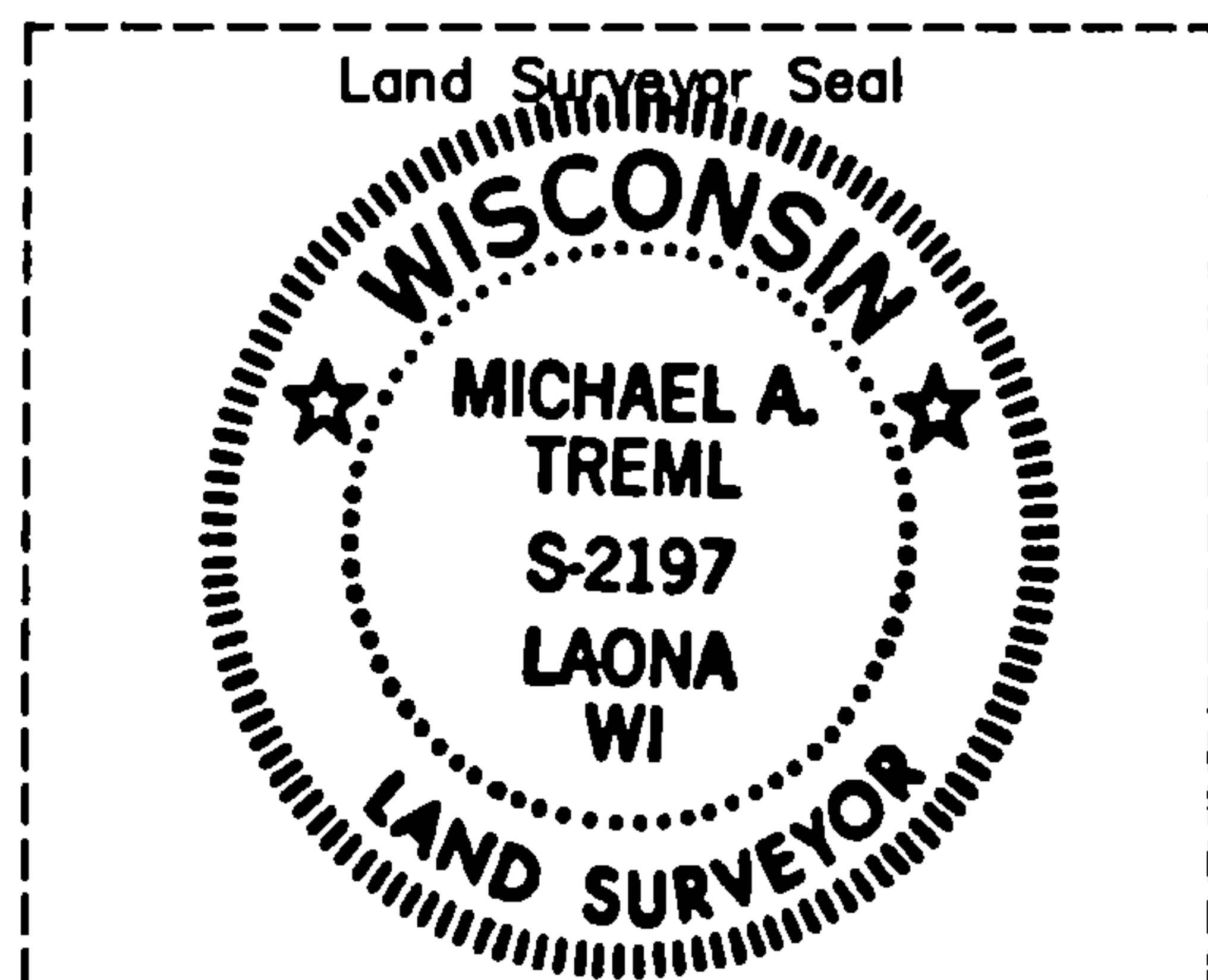
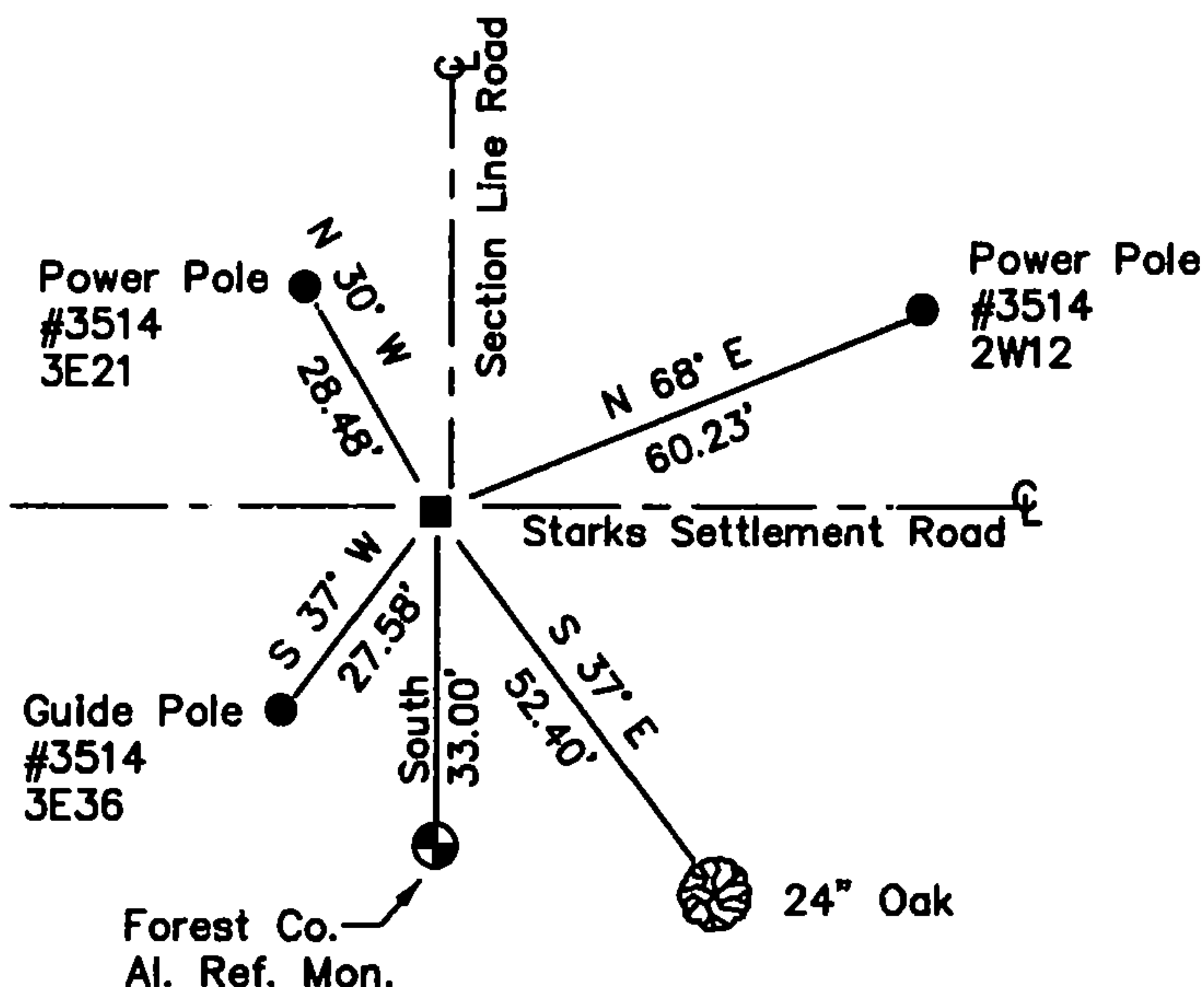
- ☐ Restored through acceptance of an obliterated evidence location.
☒ Restored through acceptance of a found perpetuated location.
☐ Considered a lost corner and reestablished through lost corner proportionate methods (include a plan view drawing showing distances and directions to other Public Land Survey Corners used for proportioning and determining the corner location).
☐ Restored or reestablished in a location that differs from a previous restoration or reestablishment (include a plan view drawing and indicate what was set and/or found).

Describe the monument and accessories used to perpetuate the location of this corner (include a plan view drawing and indicate what was set and/or found).

LEGEND:

- Found Railroad Spike
in Asphalt Road
- ⊕ Set Forest County
Aluminum Monument
Stamped for Reference Mon.

Note: All distances are
taken to nail in
side of tree and poles.



I, Michael A. Trembl, RLS
(type or print name) certify that the corner location shown on
this record was determined by me or under my direction and
control and that this U.S. Public Land Survey Monument Record
is correct and complete to the best of my knowledge and belief.

Michael A. Trembl 12-04-01
Signature Date

The West One-quarter corner of
Section 2 T. 35 N., R. 14 E.
Forest County, WI

Index No. C-17

43514032000