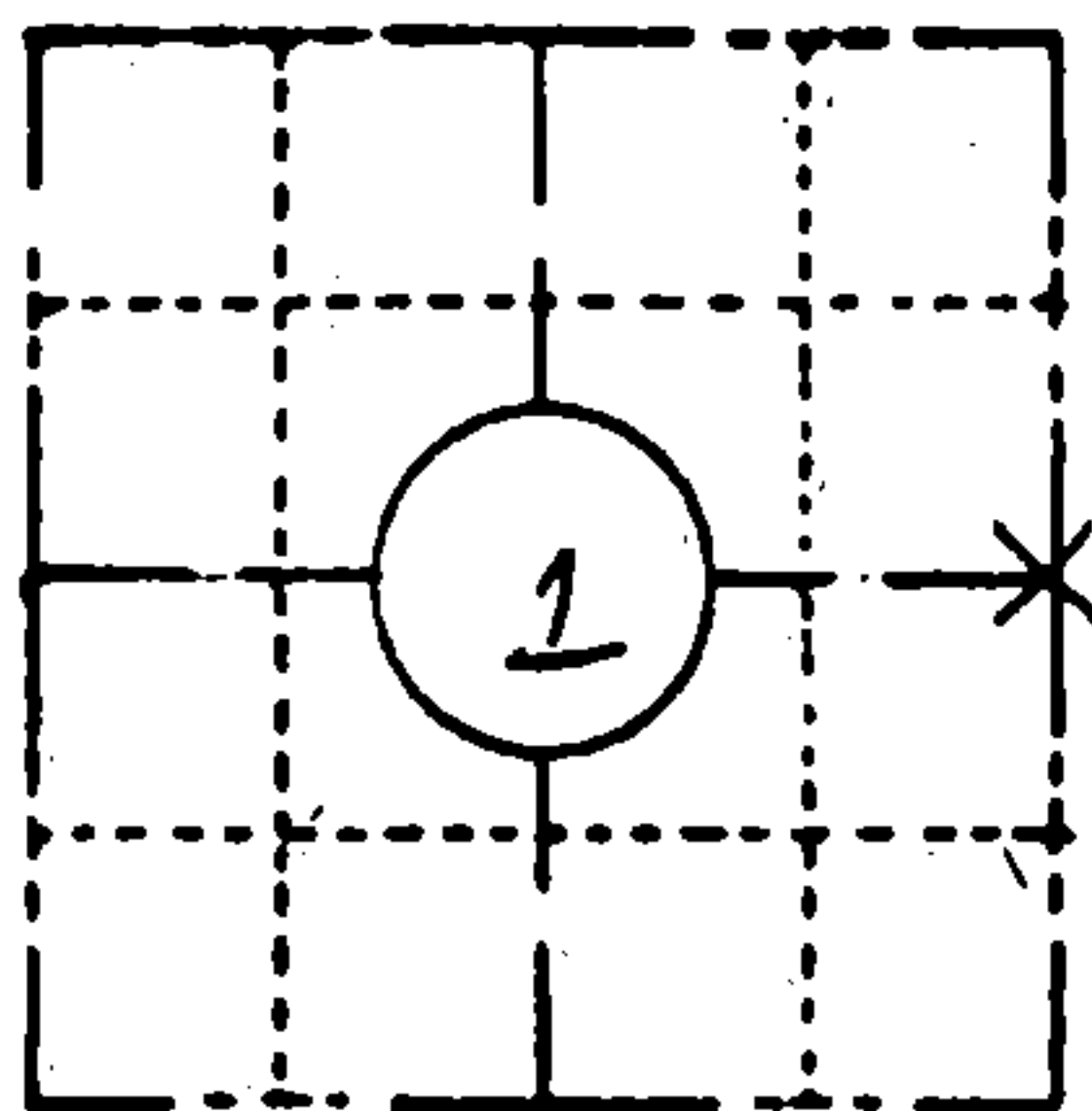


**ORIGINAL ON FILE IN CO CLERK'S OFFICE
COPY HERE FOR REFERENCE**

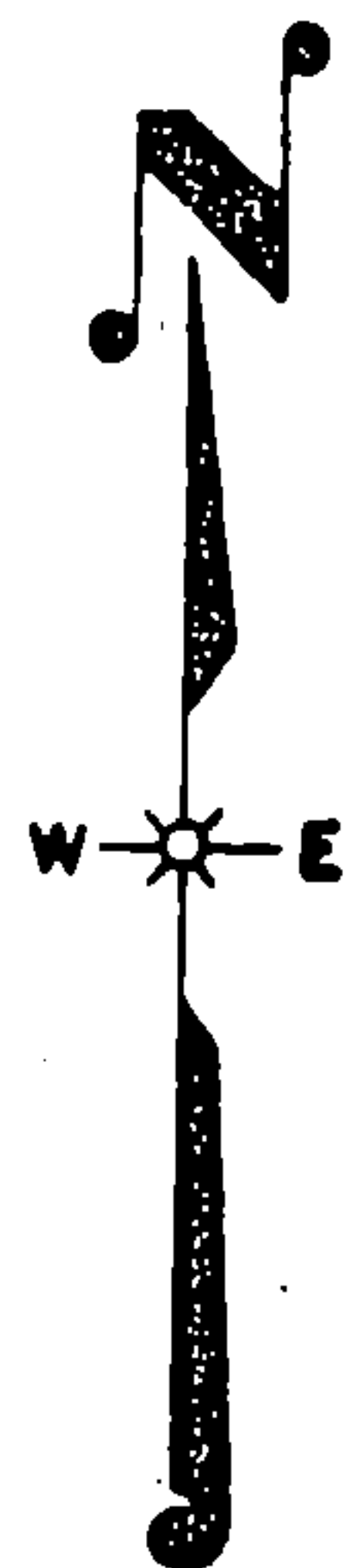
FIELD SURVEY NOTES
PRESERVATION OF LANDMARKS
(Pursuant to Section 59.635(7) Wisconsin Statutes
E-D-707-69

State of Wisconsin / Department of Transportation

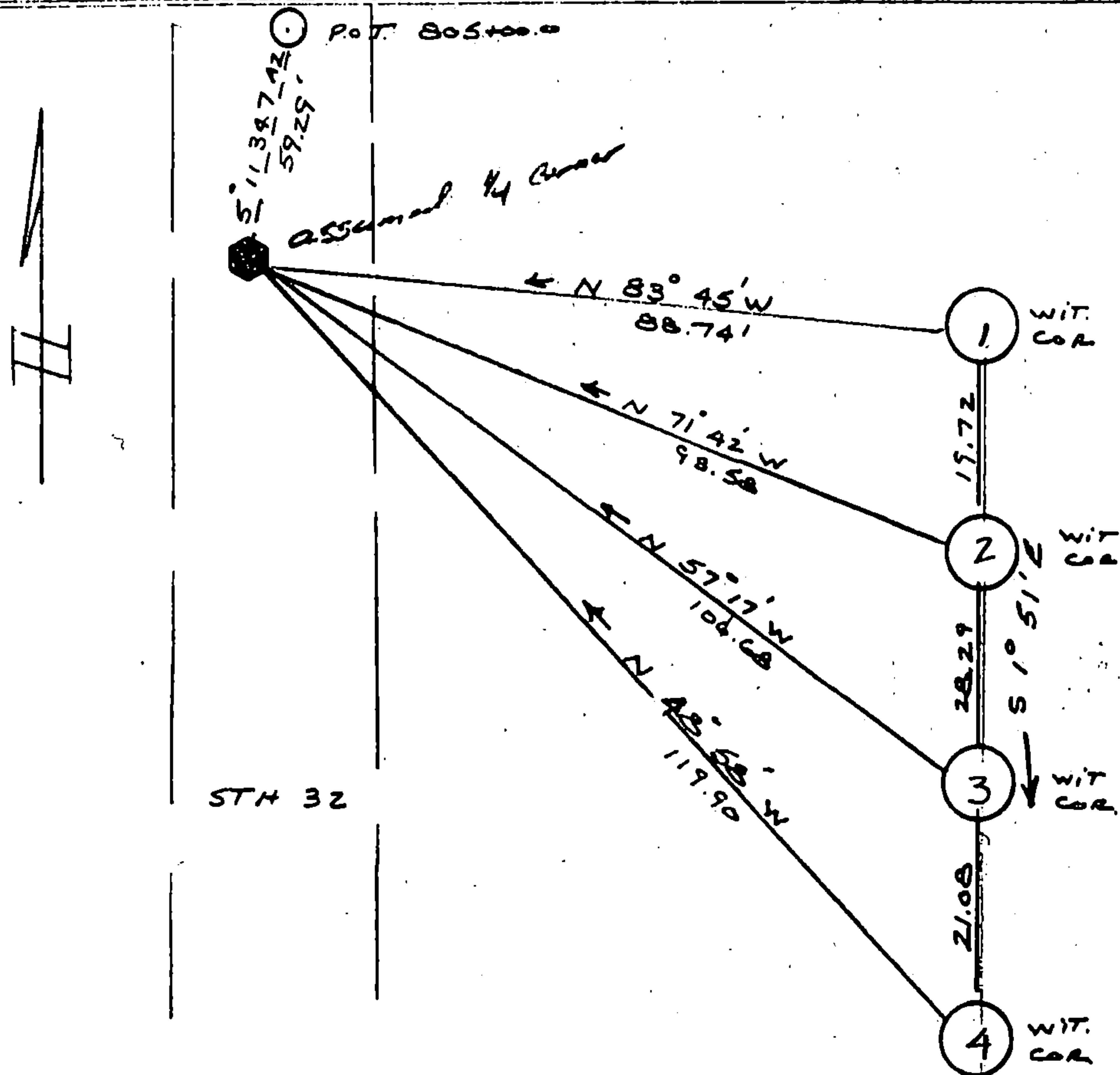
COUNTY FOREST		
TOWN LAONA		
HIGHWAY STH 32		
SECTION SEC 1	TOWNSHIP T 35N	RANGE R 14 E
TYPE OF LANDMARK PK NAIL IN PAVT FROM USFS REF.		



LOCATION SKETCH
(Location of landmark indicated by "x")



This space for copy of field notes or ties to the above described landmarks



ALL WITNESS CORNERS ARE
D.O.T. BLANSTEN DRIVEABLE
MONUMENTS SET FLUSH WITH
GROUND & STAMPED WITH
BEARING AND DISTANCE TO
CORNER.
Bigs are referenced to STH 32
&

FILED UNDER PROJECT 9131-03-70			COUNTY CLERK'S OFFICE COUNTY OF Forest WISCONSIN } 55	
DISTRICT OFFICE NUMBER 03-07	CITY RHINELANDER	COUNTY ONEIDA	DATE RECEIVED FOR RECORD 7-10-85	DATE COPY SENT TO COUNTY SURVEYOR N/A
LOCATED OR ESTABLISHED BY NAME ROBERT B JOHNSON			SIGNATURE OF COUNTY CLERK Dora C. James	
TITLE SURVEY CROWN CHIEF DATE 5-21-85 under the direct supervision of MICHAEL Hess 500809				

PRESERVATION OF LANDMARKS

PAGE _____

43514012000

0-25