

CERTIFIED LAND CORNER RESTORATION

Index No. **X-18**

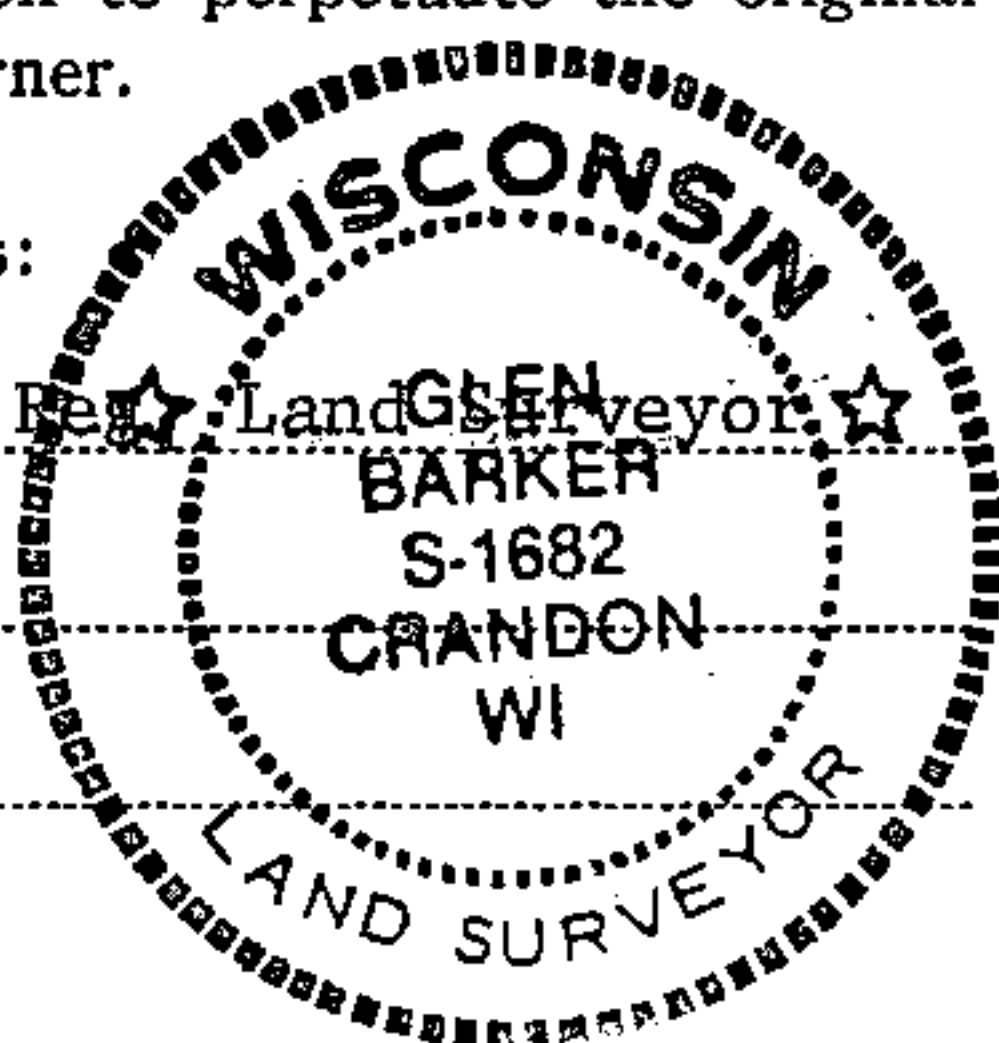
State of Wisconsin }
County of Forest } ss.

I Glen Barker, do hereby certify that on the 27th day of April, 19 83, I ~~found~~ re-established the WC 1/16 corner of Section 35 Township 35, North, Range 13 East, Fourth Principal Meridian, as described hereon; and that from this evidence I established a new monument and accessories as described hereon to perpetuate the original location of this corner.

Resident witnesses:

J. Claflin, Reg. Land Surveyor

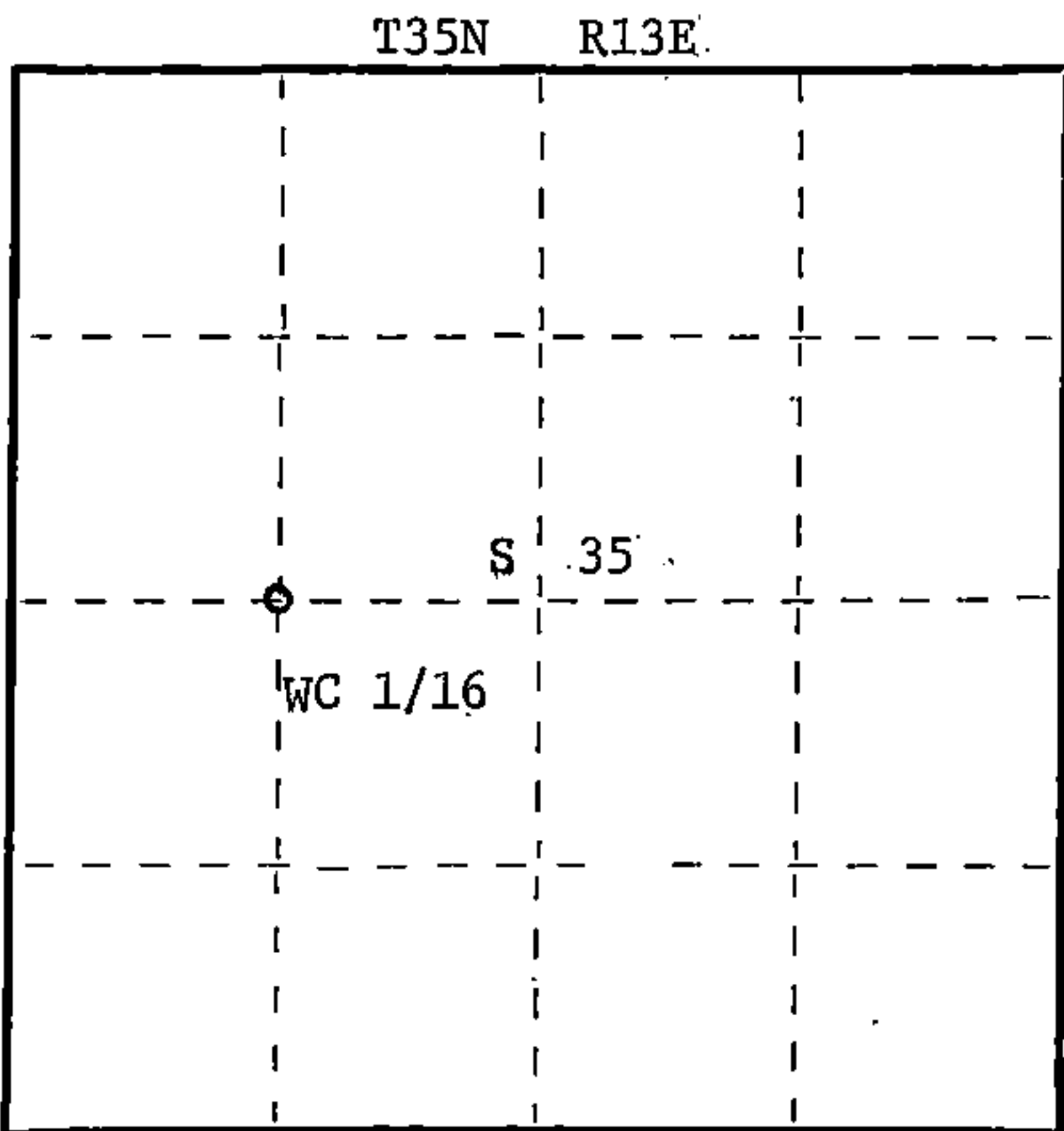
H. Wagoner



Stock No. 26272

HC Miller Company

FORM 985



○ = Corner monument restored.

History of original corner establishment:

No evidence of any previous corner.

Description of corner evidence found:

Total distance from 1/4 corner between sections 34 and 35 to C 1/4 section 35 is 2627.90 feet.
Set WC 1/16 1313.95 feet intermediate.

Description of monument and accessories I established to perpetuate the original location of this corner.

Set a 1" iron pipe with 2" diameter alloy cap, stamped:
Monument projects 12" above ground.
Marked NBT's: Sugar 8" N59W 4.95 feet
Sugar 6" N53E 14.21 feet
scribed 1/16 B.T.

S1682
T35N R13E
WC 1/16 S+35
CPI-1983

43513352030

Dated at Rhineland, Wis., this 30th day of June, 19 83.

Signature Glen Barker Title Registered Land Surveyor Registration No. S-1682
(County Surveyor, Registered Land Surveyor, or other duly authorized official)

Office of Register of Deeds, County of Forest, I hereby certify that the within instrument was filed in this office for record on the 26th day of July, 19 83 at 11:55 o'clock A. M.

Eugene Staszny
(Register of Deeds)
By _____ Deputy

DOCUMENT NO. **123859**