

CERTIFIED LAND CORNER RESTORATION

Index No. **X-19**

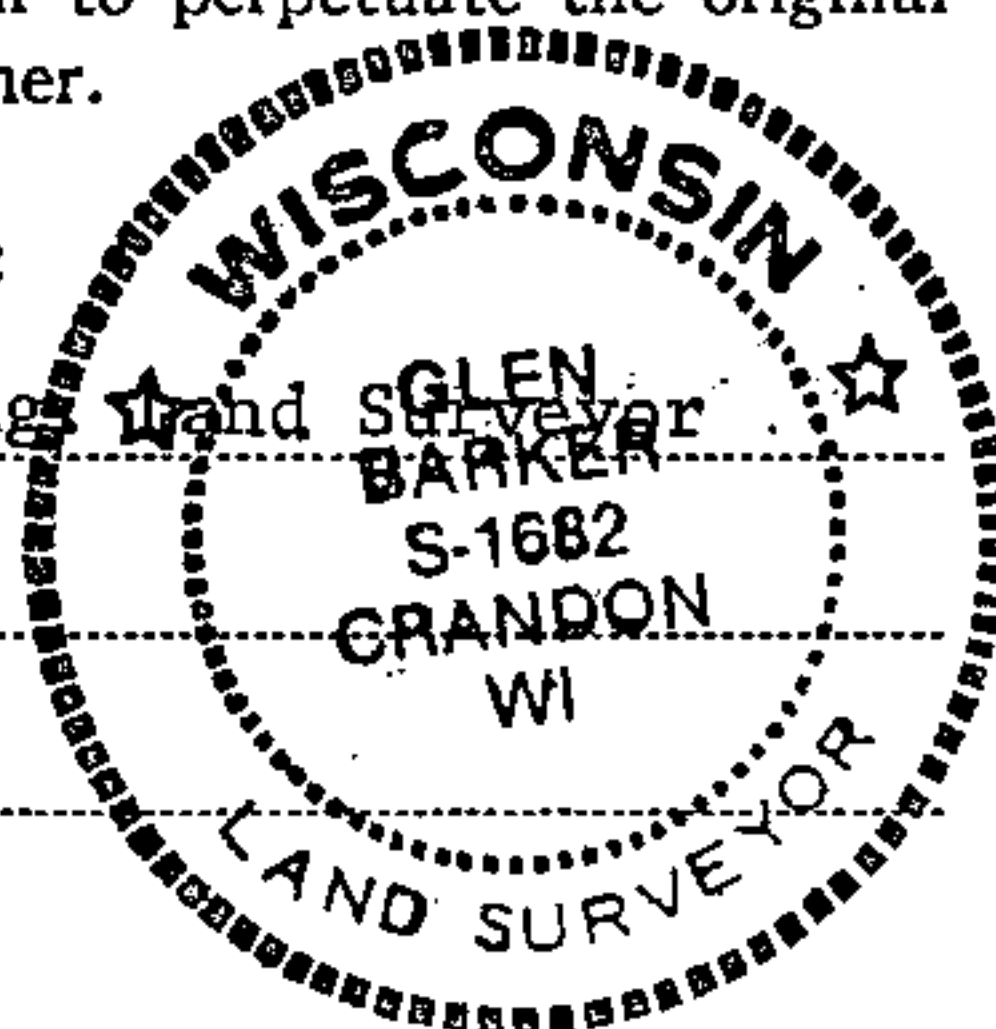
State of Wisconsin }
County of Forest } ss.

I Glen Barker, do hereby certify that on the 27th day of April, 1983, I ~~found~~ established corner of the C 1/4 corner of Section 35 Township 35, North, Range 13 East, Fourth Principal Meridian, as described hereon; and that from this evidence I established a new monument and accessories as described hereon to perpetuate the original location of this corner.

Resident witnesses:

J. Claflin, Reg. Land Surveyor

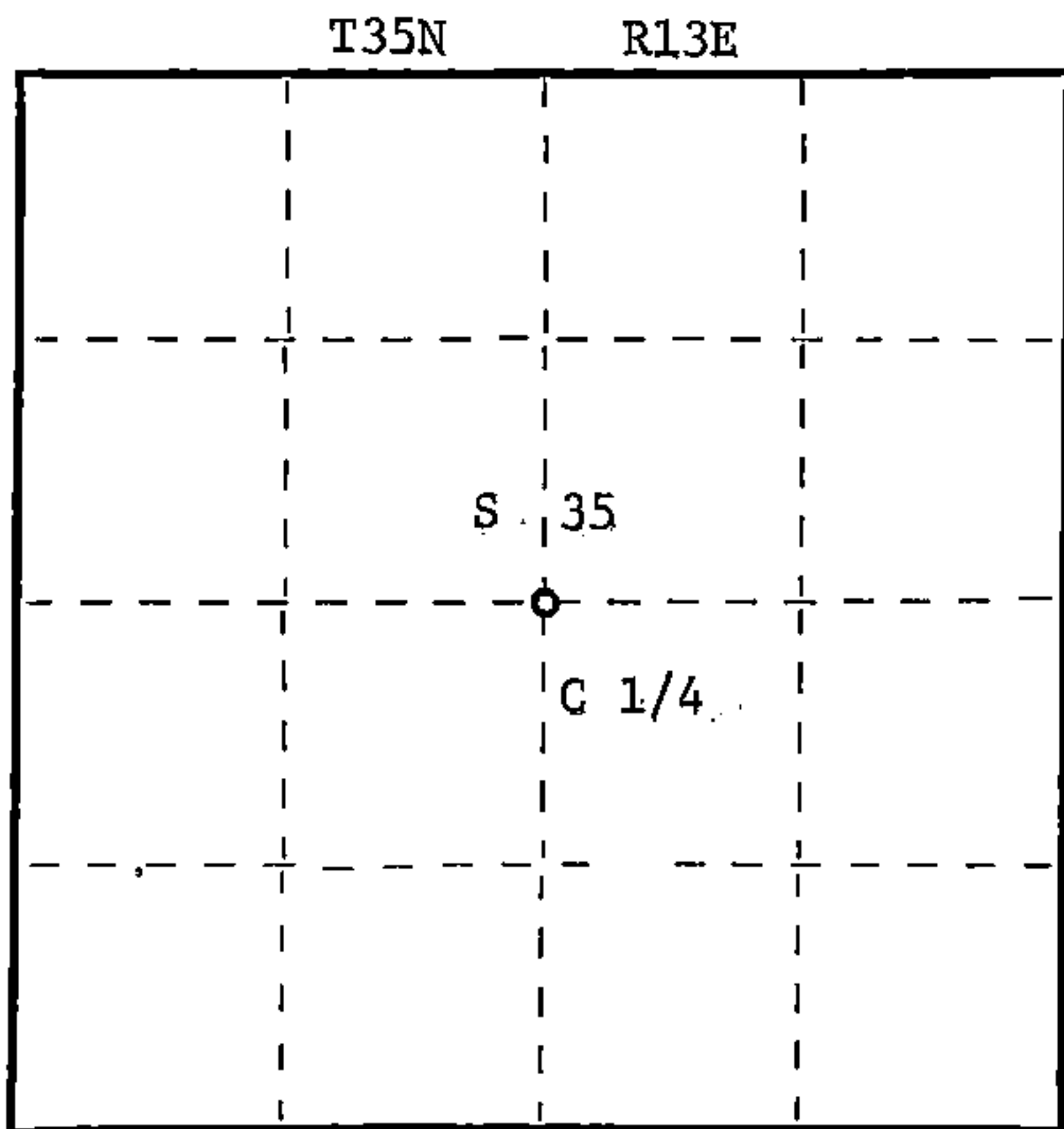
H. Wagoner



Stock No. 26272

HC Miller Company

FORM 985



○ = Corner monument restored.

History of original corner establishment:

No evidence of any previous corner.

Description of corner evidence found:

Corner established by subdivision of section 35.
Corner sets S 0-14-58 W 2638.48 feet of N 1/4 corner,
N 89-39W 2626.19 feet of E 1/4,
N 0-14-58 E 2638.06 feet of S 1/4,
S 89-39E 2627.89 feet of W 1/4.

Description of monument and accessories I established to perpetuate the original location of this corner.

Set a 1" iron pipe with 2" diameter alloy cap, stamped:
Monument projects 18" above ground.

Marked NBT's:

Sugar 6" S15W 22.96 feet
Sugar 7" S38E 24.75 feet
Sugar 6" N81E 20.40 feet
scribed 1/16 B.T.

S1682
T35N R13E
C 1/4 S 35
CPI - 1983

Dated at Rhinelander, Wis., this 30th day of June, 1983

Signature Glen Barker Title Registered Land Surveyor Registration No. S-1682
(County Surveyor, Registered Land Surveyor, or other duly authorized official)

Office of Register of Deeds, County of Forest, I hereby certify that the within instrument was filed in this office for record on the 26th day of July, 1983 at 11:55 o'clock A. M.

Eugene Stutzman
(Register of Deeds)
By _____ Deputy

DOCUMENT NO. **123860**

43513352020